

## KARISSMA - PLAN M4245A3F-0

Total Area: 4255 sq. ft.  
Garage Area: 963 sq. ft.  
Garage Area: 963 sq. ft.  
Garage Size: 3  
Stories: 2  
Bedrooms: 5  
Full Baths: 4  
Half Baths: 1  
Width: 68'-0"  
Depth: 66'-0"  
Height: 30'-0"  
Foundation: Crawl Space



**PLAN NOT AVAILABLE IN REDMOND WASHINGTON UNTIL AFTER 06/01/2025**

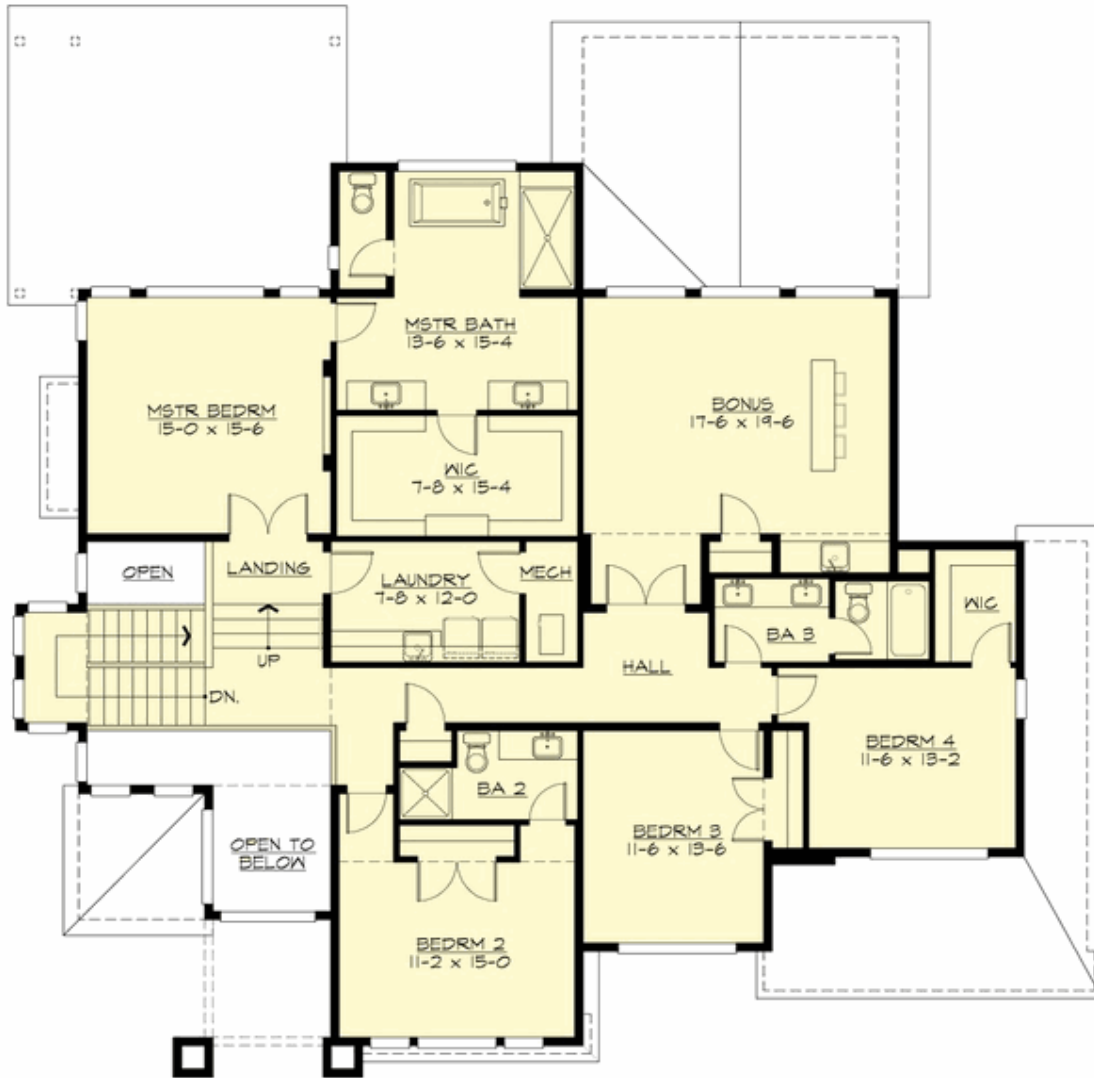
## KARISSMA - PLAN M4245A3F-0

### MAIN FLOOR



**KARISSMA - PLAN M4245A3F-0**

**UPPER FLOOR**



## KARISSMA - PLAN M4245A3F-0

### PLAN DETAILS

#### Area Summary

Total Area: 4255 sq. ft.  
Main Floor: 2090 sq. ft.  
Upper Floor: 2165 sq. ft.  
Garage Floor: 963 sq. ft.

#### General Information

Stories: 2  
Width: 68'-0"  
Depth: 66'-0"  
Height: 30'-0"

#### Architectural Style

Contemporary  
Modern  
Prairie

#### Number of Rooms

Bedrooms: 5  
Full Baths: 4  
Half Baths: 1

#### Garage

Garage Size: 3  
Garage Door Location: Front

#### Roof Pitches

Primary: 3:12

#### Wall Heights

Main: 11'-0"  
Upper: 11'-0"

#### Foundation Type

Crawl Space

#### Roof Framing

Trusses

#### Floor Load

Live (lbs): 40 PSF  
Dead (lbs): 10 PSF

#### Roof Load

Live (lbs): 25 PSF  
Dead (lbs): 15 PSF  
Wind: 85 MPH

#### Design Features

- Bonus Space @ Main Floor & Upper Floor
- Den/Office
- Great Room
- Laundry Room @ Upper Floor
- Master Bedroom @ Upper Floor Rear
- New Plan
- Rear Porch
- View Lot - Rear
- Wide Lot