

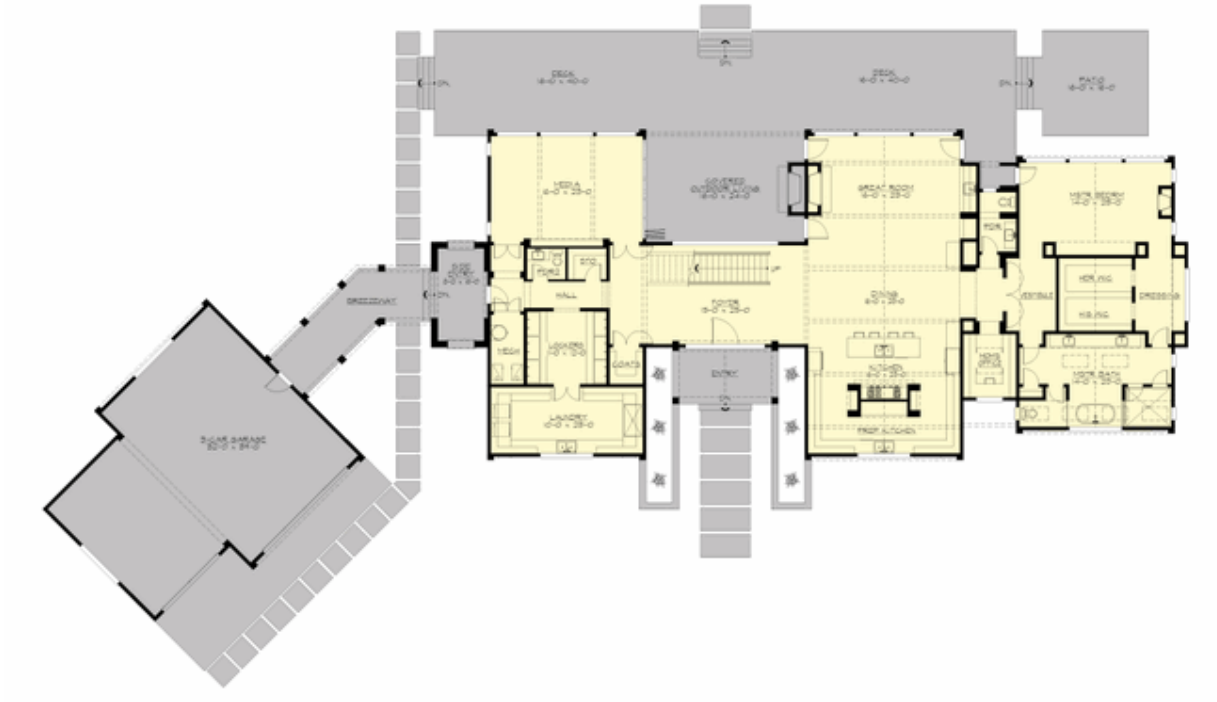
## SCANDIA - PLAN M5185A3SD-0

Total Area: 5185 sq. ft.  
Garage Area: 1175 sq. ft.  
Garage Area: 1175 sq. ft.  
Garage Size: 3  
Stories: 2  
Bedrooms: 4  
Full Baths: 4  
Half Baths: 2  
Width: 173'-6"  
Depth: 74'-6"  
Height: 31'-6"  
Foundation: Crawl Space



## SCANDIA - PLAN M5185A3SD-0

### MAIN FLOOR



## SCANDIA - PLAN M5185A3SD-0

### UPPER FLOOR





## SCANDIA - PLAN M5185A3SD-0

### PLAN DETAILS

#### Area Summary

Total Area: 5185 sq. ft.  
Main Floor: 3875 sq. ft.  
Upper Floor: 1310 sq. ft.  
Garage Floor: 1175 sq. ft.

#### General Information

Stories: 2  
Width: 173'-6"  
Depth: 74'-6"  
Height: 31'-6"

#### Architectural Style

Alpine  
Contemporary  
Modern

#### Number of Rooms

Bedrooms: 4  
Full Baths: 4  
Half Baths: 2

#### Garage

Garage Size: 3  
Garage Type: AngledDetached

#### Roof Pitches

Primary: 8:12  
Secondary: 4:12

#### Wall Heights

Main: 11'-0"  
Upper: 9'-0"

#### Foundation Type

Crawl Space

#### Roof Framing

Trusses

#### Floor Load

Live (lbs): 40 PSF  
Dead (lbs): 10 PSF

#### Roof Load

Live (lbs): 25 PSF  
Dead (lbs): 15 PSF  
Wind: 85 MPH

#### Design Features

- Bonus Space @ Main Floor
- Den/Office
- Great Room
- Laundry Room @ Main Floor
- Master Bedroom @ Main Floor Rear
- New Plan
- Rear Porch
- View Lot - Rear
- Wide Lot