

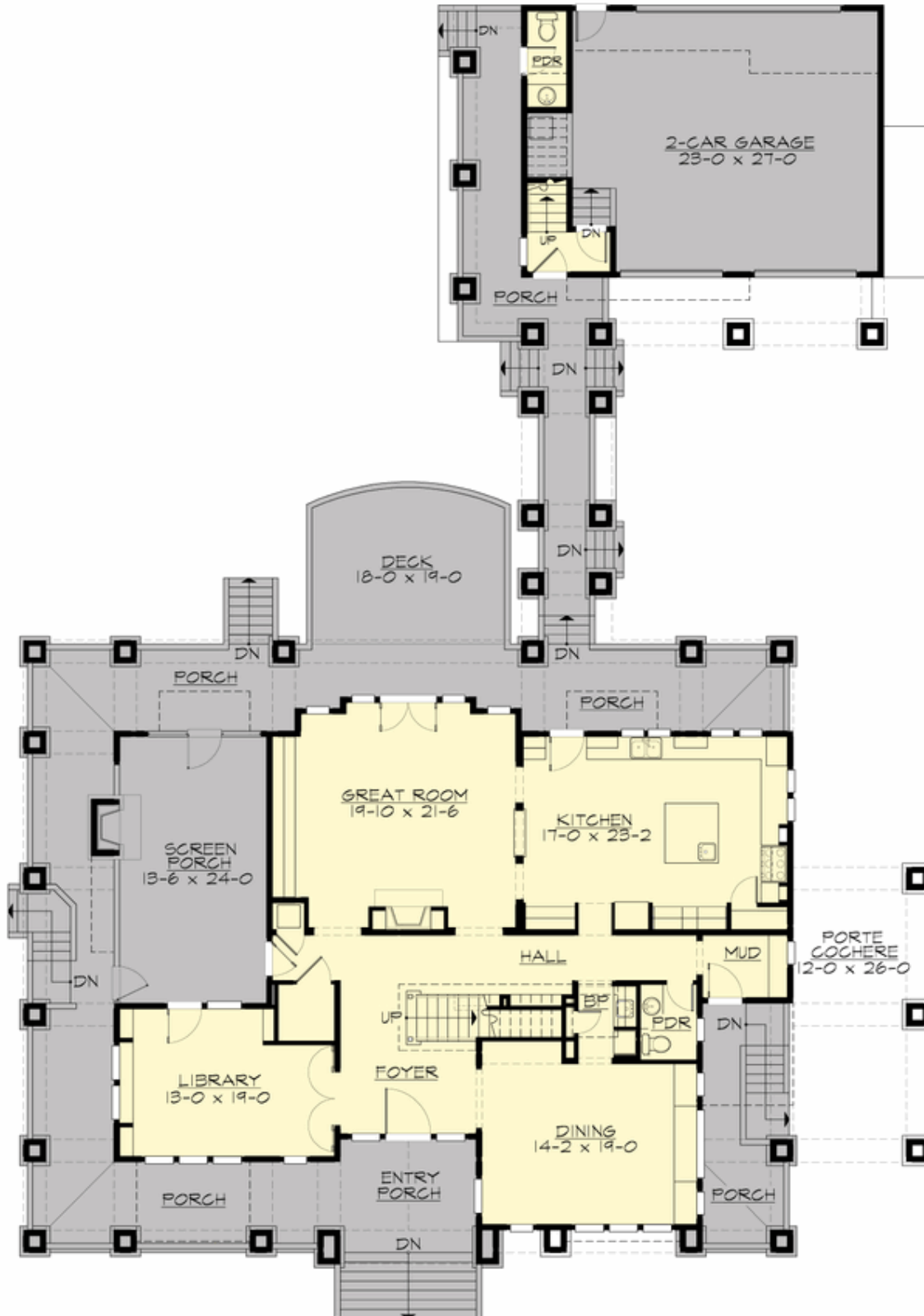
## NEW BLUE BUNGALOW - PLAN M3963A-0

Total Area: 4785 sq. ft.  
Garage Area: 656 sq. ft.  
Garage Area: 656 sq. ft.  
Garage Size: 3  
Stories: 3  
Bedrooms: 4  
Full Baths: 4  
Half Baths: 1  
Width: 80'-0"  
Depth: 111'-0"  
Height: 40'-0"  
Foundation: Crawl Space



## NEW BLUE BUNGALOW - PLAN M3963A-0

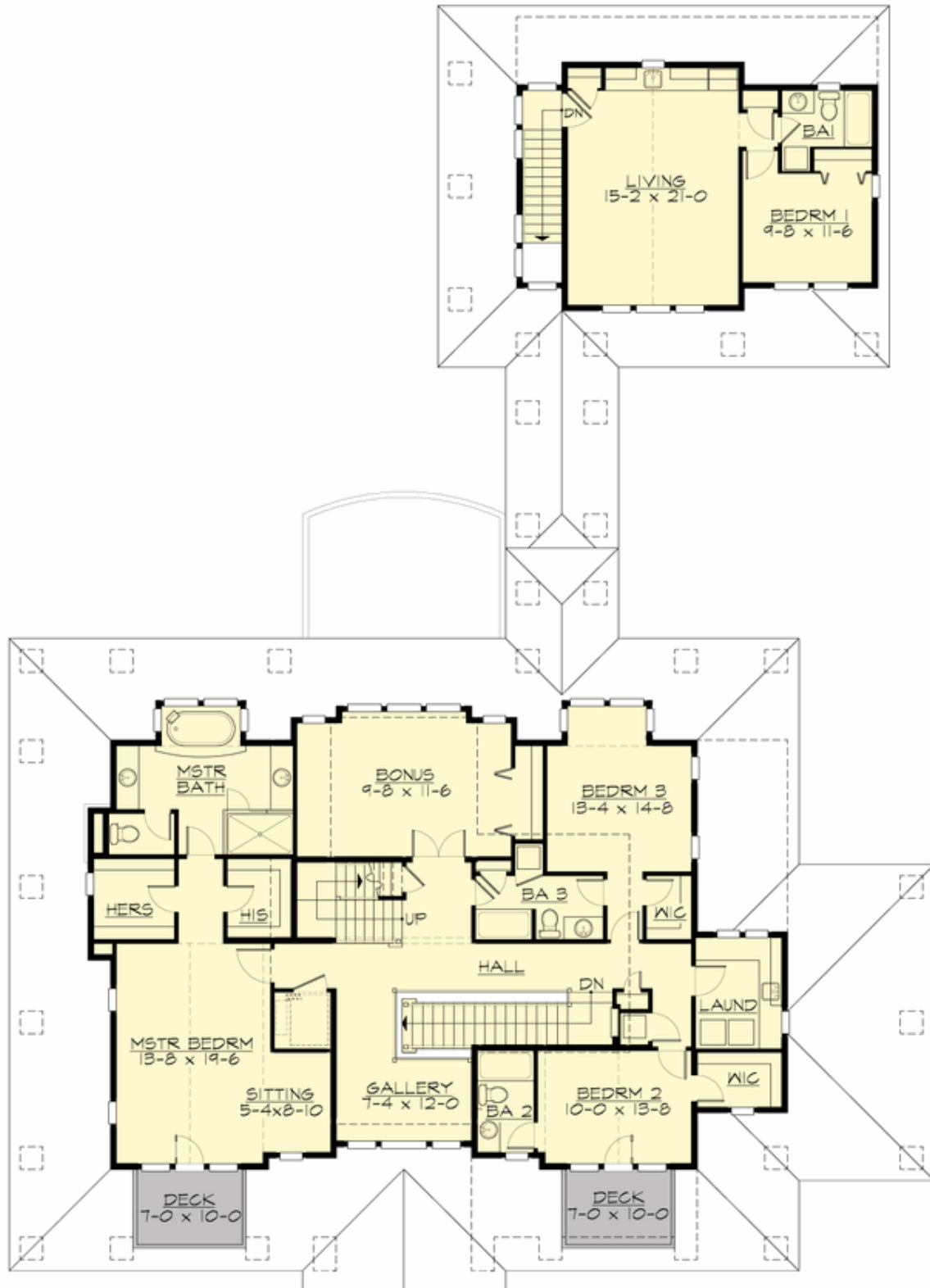
### MAIN FLOOR





## NEW BLUE BUNGALOW - PLAN M3963A-0

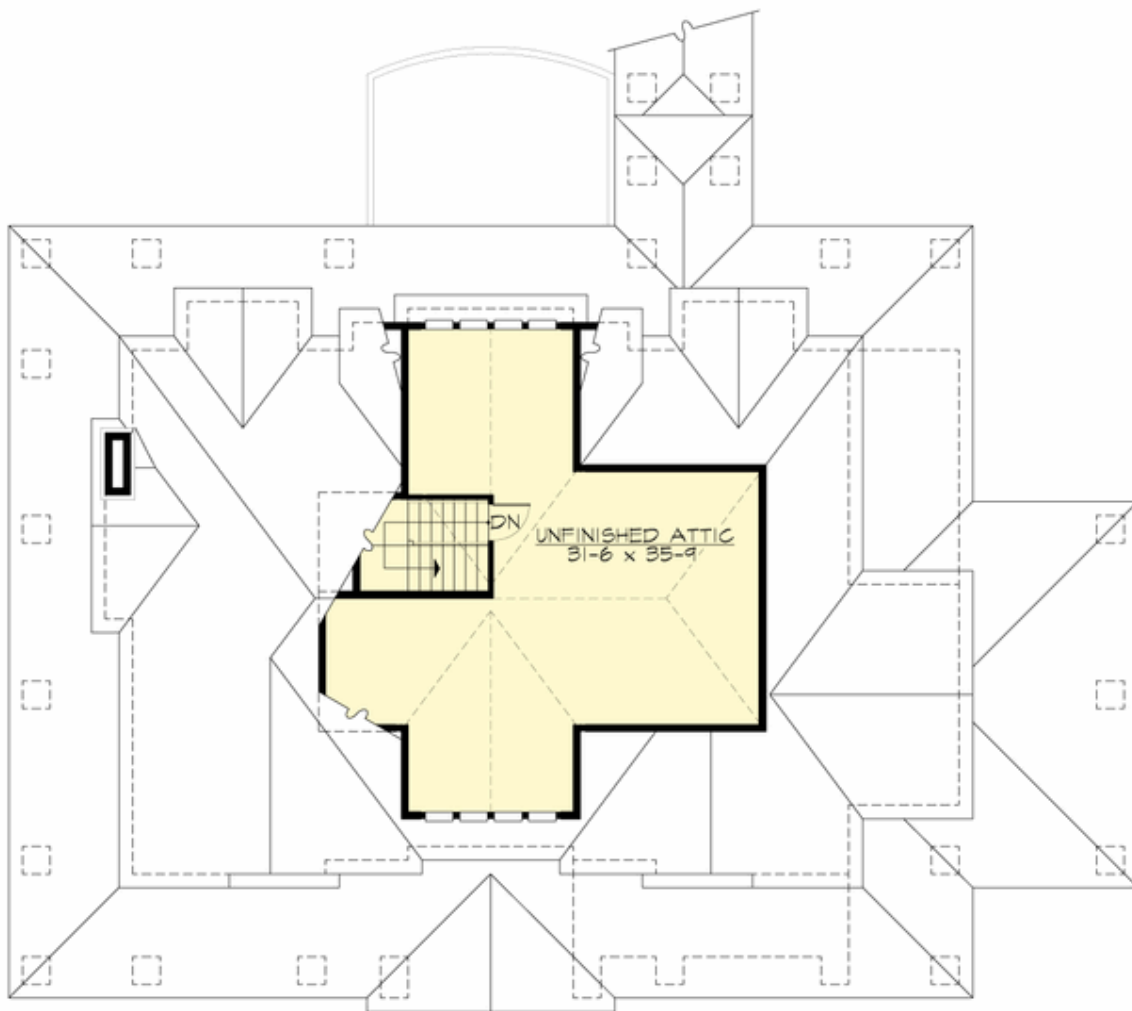
### UPPER FLOOR





**NEW BLUE BUNGALOW - PLAN M3963A-0**

**THIRD FLOOR**







## NEW BLUE BUNGALOW - PLAN M3963A-0

### PLAN DETAILS

#### Area Summary

Total Area: 4785 sq. ft.  
Main Floor: 2104 sq. ft.  
Upper Floor: 2681 sq. ft.  
Garage Floor: 656 sq. ft.

#### General Information

Stories: 3  
Width: 80'-0"  
Depth: 111'-0"  
Height: 40'-0"

#### Architectural Style

Bungalow  
Craftsman  
Farmhouse  
Lodge

#### Number of Rooms

Bedrooms: 4  
Full Baths: 4  
Half Baths: 1

#### Garage

Garage Size: 3  
Garage Door Location: Rear  
Garage Type: Detached

#### Roof Pitches

Primary: 12:12  
Secondary: 4:12

#### Wall Heights

Main: 10'-0"  
Upper: 9'-0"  
3rd Floor: 6'-0"  
Lower: 0'-0"

#### Foundation Type

Crawl Space

#### Roof Framing

Trusses

#### Floor Load

Live (lbs): 40 PSF  
Dead (lbs): 10 PSF

#### Roof Load

Live (lbs): 25 PSF  
Dead (lbs): 15 PSF  
Wind: 85 MPH

#### Design Features

- Bonus Space @ Upper Floor
- Den/Office
- Great Room
- Laundry Room @ Upper Floor
- Luxury Plan
- Master Bedroom @ Upper Floor Front
- Wide Lot
- Wrap-Around Porch