

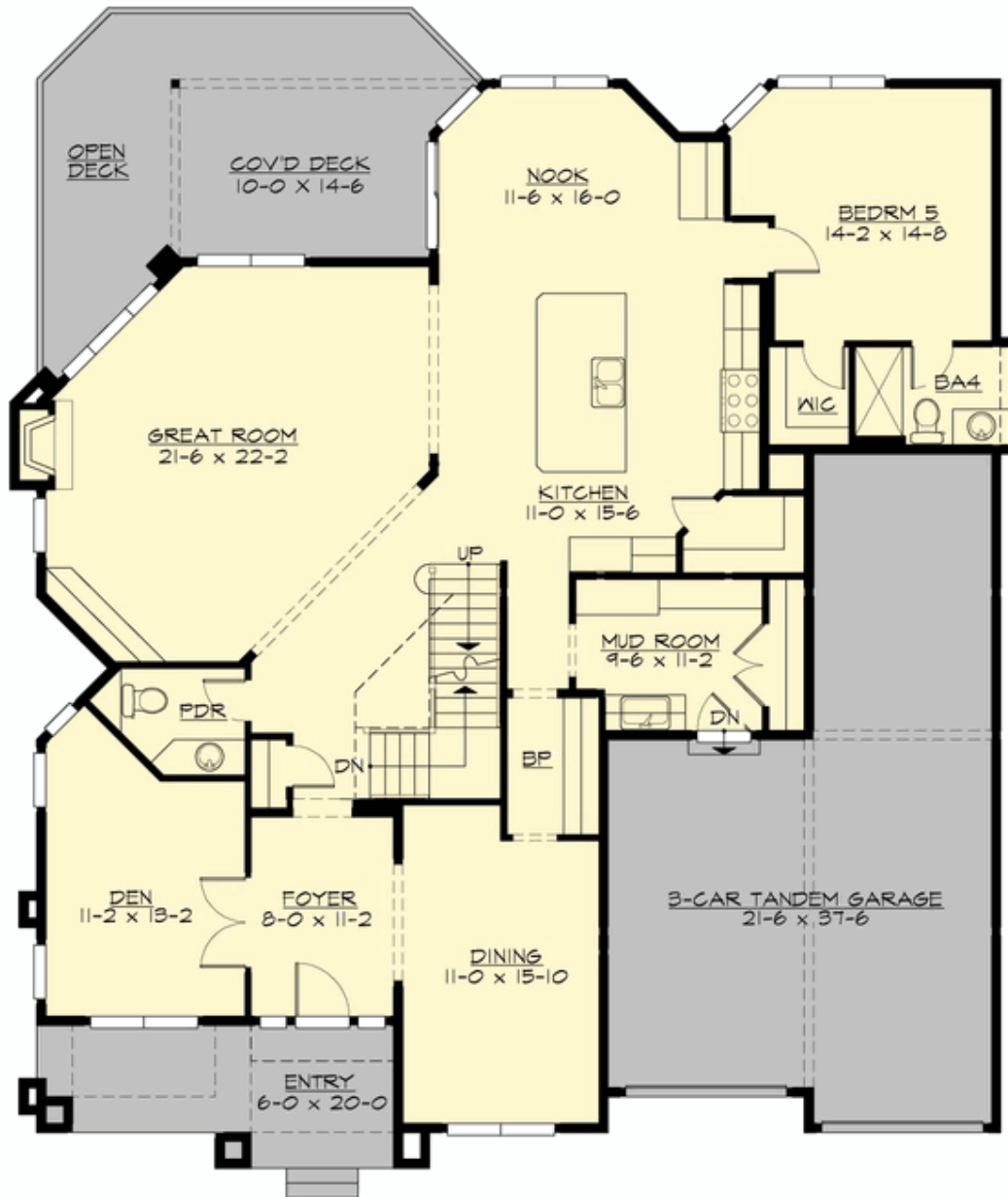
## RIDGECREST - PLAN M5553A3FT-0DB

Total Area: 5553 sq. ft.  
Garage Area: 642 sq. ft.  
Garage Area: 642 sq. ft.  
Garage Size: 3  
Stories: 3  
Bedrooms: 6  
Full Baths: 5  
Half Baths: 1  
Width: 55'-6"  
Depth: 61'-0"  
Height: 28'-6"  
Foundation: Daylight Basement



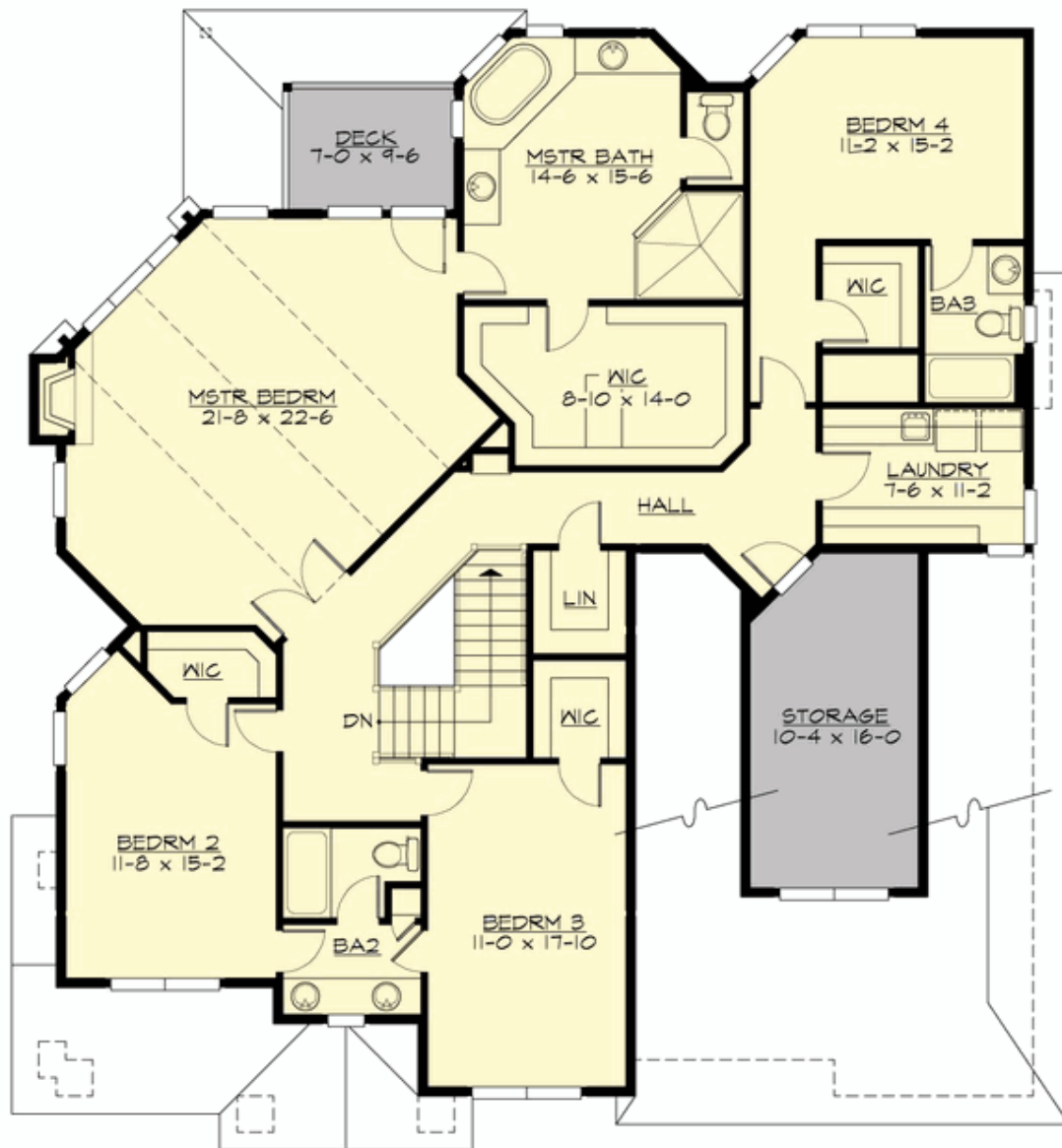
## RIDGECREST - PLAN M5553A3FT-0DB

### MAIN FLOOR



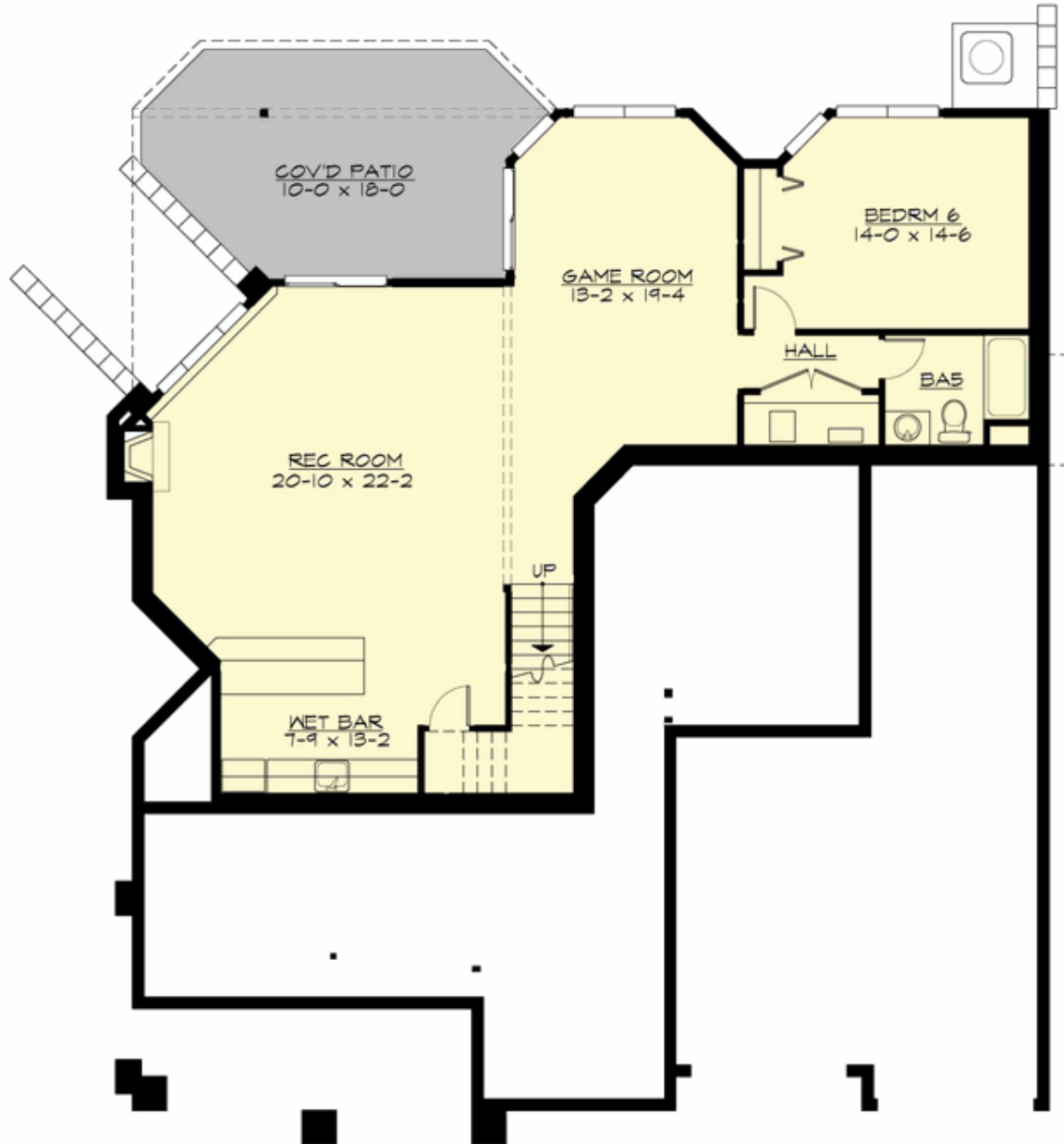
## RIDGECREST - PLAN M5553A3FT-0DB

### UPPER FLOOR



## RIDGECREST - PLAN M5553A3FT-0DB

### LOWER FLOOR





## RIDGECREST - PLAN M5553A3FT-0DB

### PLAN DETAILS

#### Area Summary

Total Area:	5553 sq. ft.
Main Floor:	2141 sq. ft.
Upper Floor:	2074 sq. ft.
Lower Floor:	1338 sq. ft.
Garage Floor:	642 sq. ft.

#### General Information

Stories:	3
Width:	55'-6"
Depth:	61'-0"
Height:	28'-6"

#### Architectural Style

#### Number of Rooms

Bedrooms:	6
Full Baths:	5
Half Baths:	1

#### Garage

Garage Size:	3
Garage Door Location:	Front
Garage Type:	Tandem

#### Roof Pitches

Primary:	6:12
Secondary:	4:12

#### Wall Heights

Main:	10'-0"
Upper:	9'-0"
3rd Floor:	0'-0"
Lower:	10'-0"

#### Foundation Type

Daylight Basement

#### Roof Framing

Trusses

#### Floor Load

Live (lbs):	40 PSF
Dead (lbs):	10 PSF

#### Roof Load

Live (lbs):	25 PSF
Dead (lbs):	15 PSF
Wind:	85 MPH

#### Design Features

- Bonus Space @ Lower Floor
- Den/Office
- Front and Rear Porch
- Great Room
- Laundry Room @ Upper Floor
- Master Bedroom @ Upper Floor Rear