

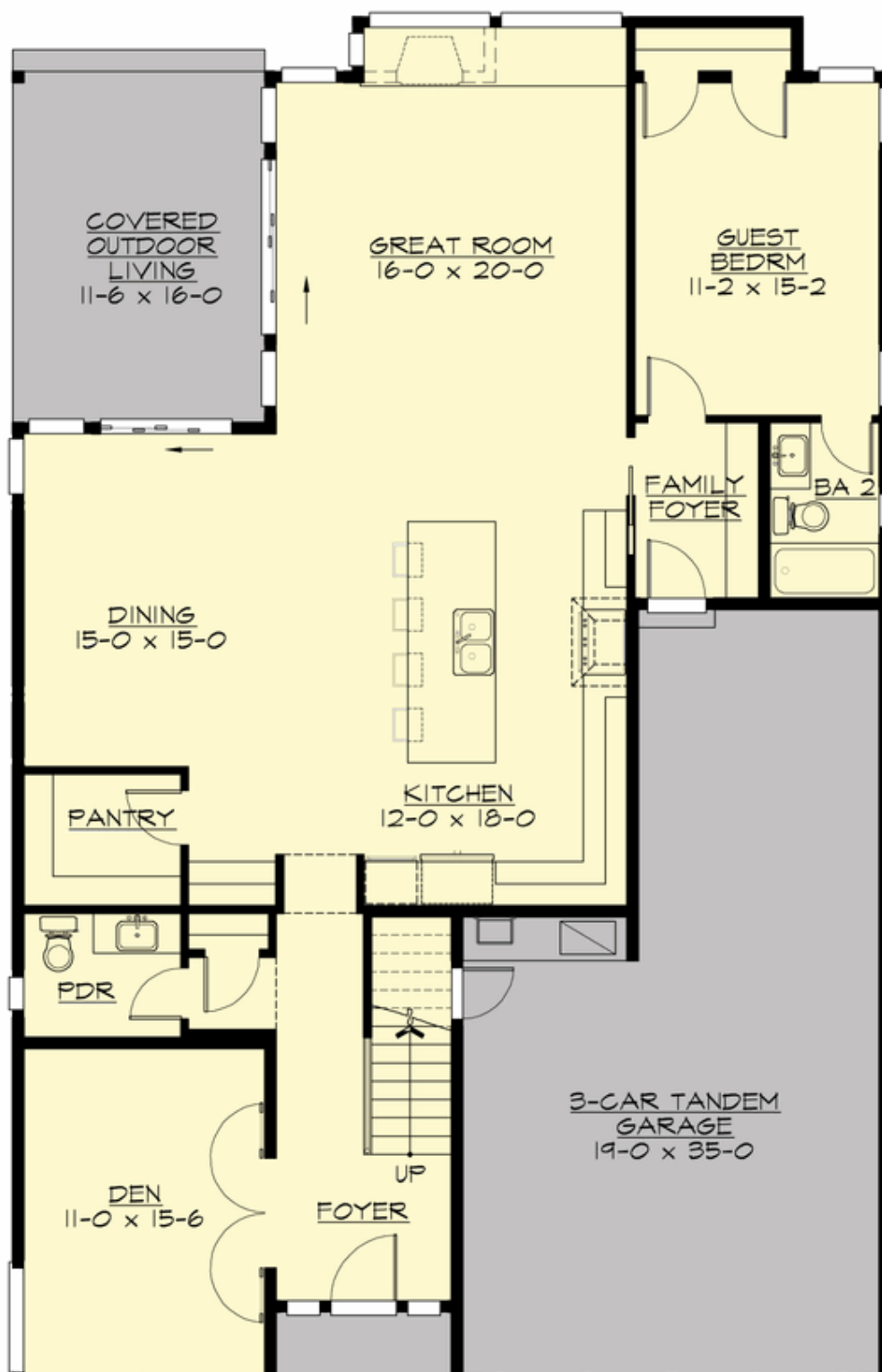
## WISTI - PLAN M3640A3FT-0

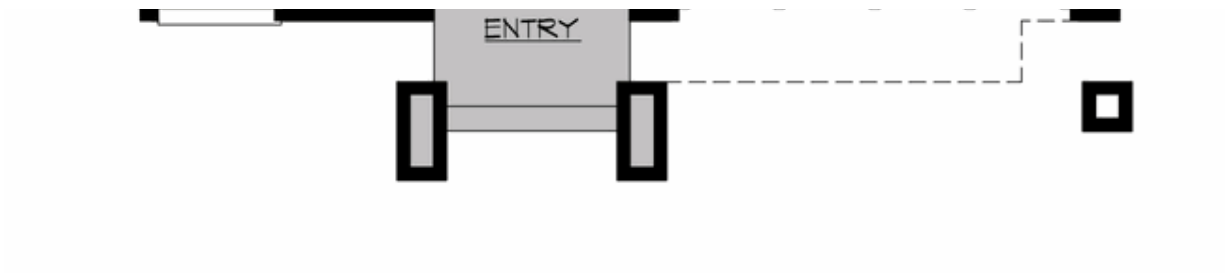
Total Area: 3640 sq. ft.  
Garage Area: 610 sq. ft.  
Garage Area: 610 sq. ft.  
Garage Size: 3  
Stories: 2  
Bedrooms: 5  
Full Baths: 3  
Half Baths: 1  
Width: 40'-0"  
Depth: 69'-0"  
Height: 26'-0"  
Foundation: Crawl Space



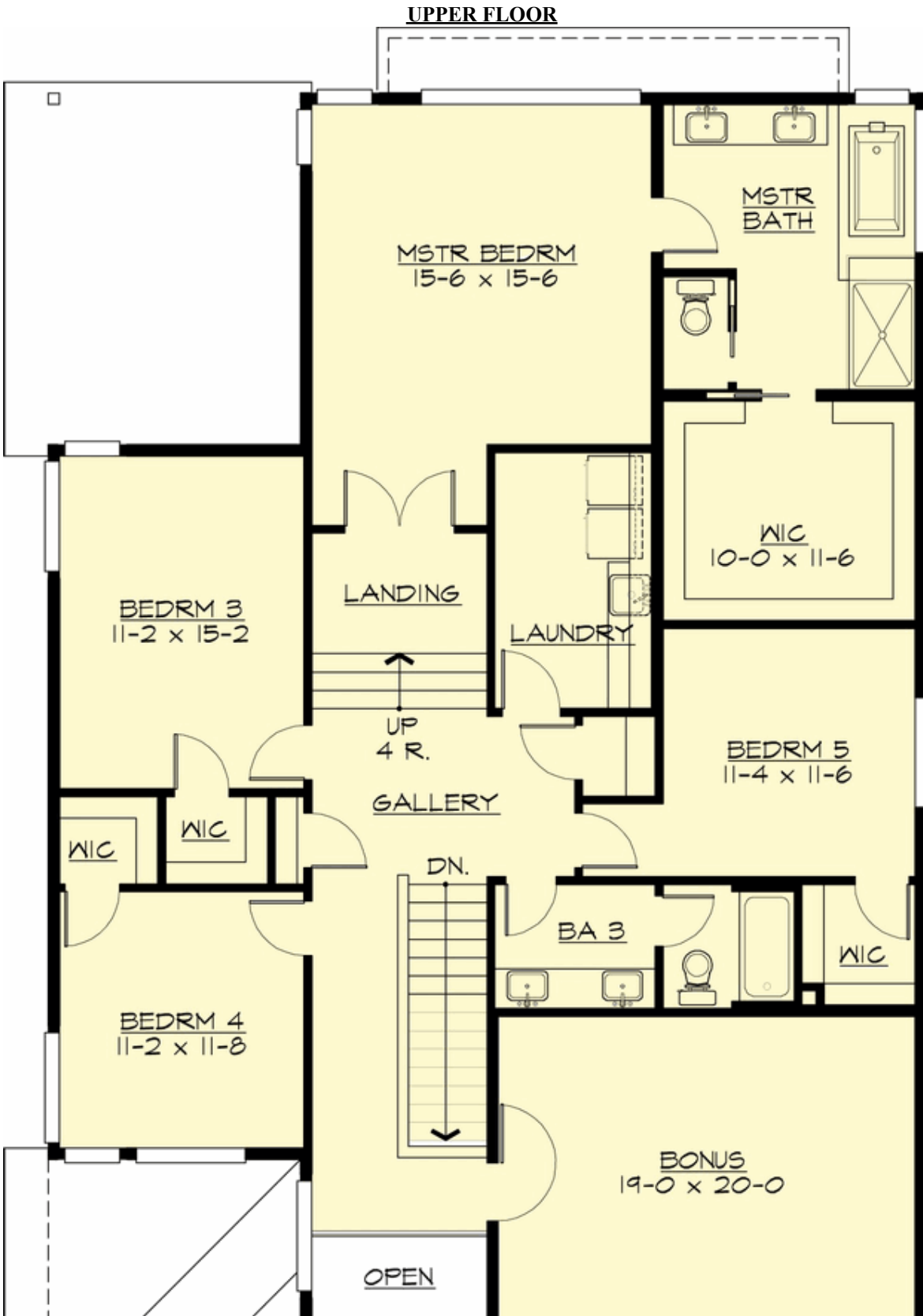
**WISTI - PLAN M3640A3FT-0**

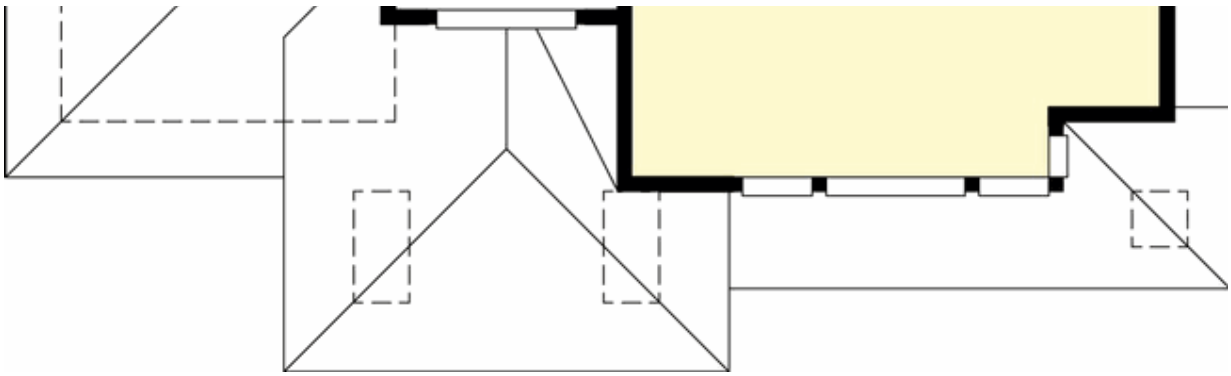
**MAIN FLOOR**





**WISTI - PLAN M3640A3FT-0**







## WISTI - PLAN M3640A3FT-0

### PLAN DETAILS

#### Area Summary

Total Area: 3640 sq. ft.  
Main Floor: 1632 sq. ft.  
Upper Floor: 2008 sq. ft.  
Garage Floor: 610 sq. ft.

#### General Information

Stories: 2  
Width: 40'-0"  
Depth: 69'-0"  
Height: 26'-0"

#### Architectural Style

Contemporary  
Modern  
Prairie

#### Number of Rooms

Bedrooms: 5  
Full Baths: 3  
Half Baths: 1

#### Garage

Garage Size: 3  
Garage Door Location: Front  
Garage Type: Tandem

#### Roof Pitches

Primary: 4:12  
Secondary: 3:12

#### Wall Heights

Main: 9'-0"  
Upper: 8'-0"

#### Foundation Type

Crawl Space

#### Roof Framing

Trusses

#### Floor Load

Live (lbs): 40 PSF  
Dead (lbs): 10 PSF

#### Roof Load

Live (lbs): 25 PSF  
Dead (lbs): 15 PSF  
Wind: 85 MPH

#### Design Features

- Bonus Space @ Upper Floor
- Den/Office
- Great Room
- Laundry Room @ Upper Floor
- Master Bedroom @ Upper Floor Rear
- Narrow Lot
- Rear Porch
- View Lot - Rear