

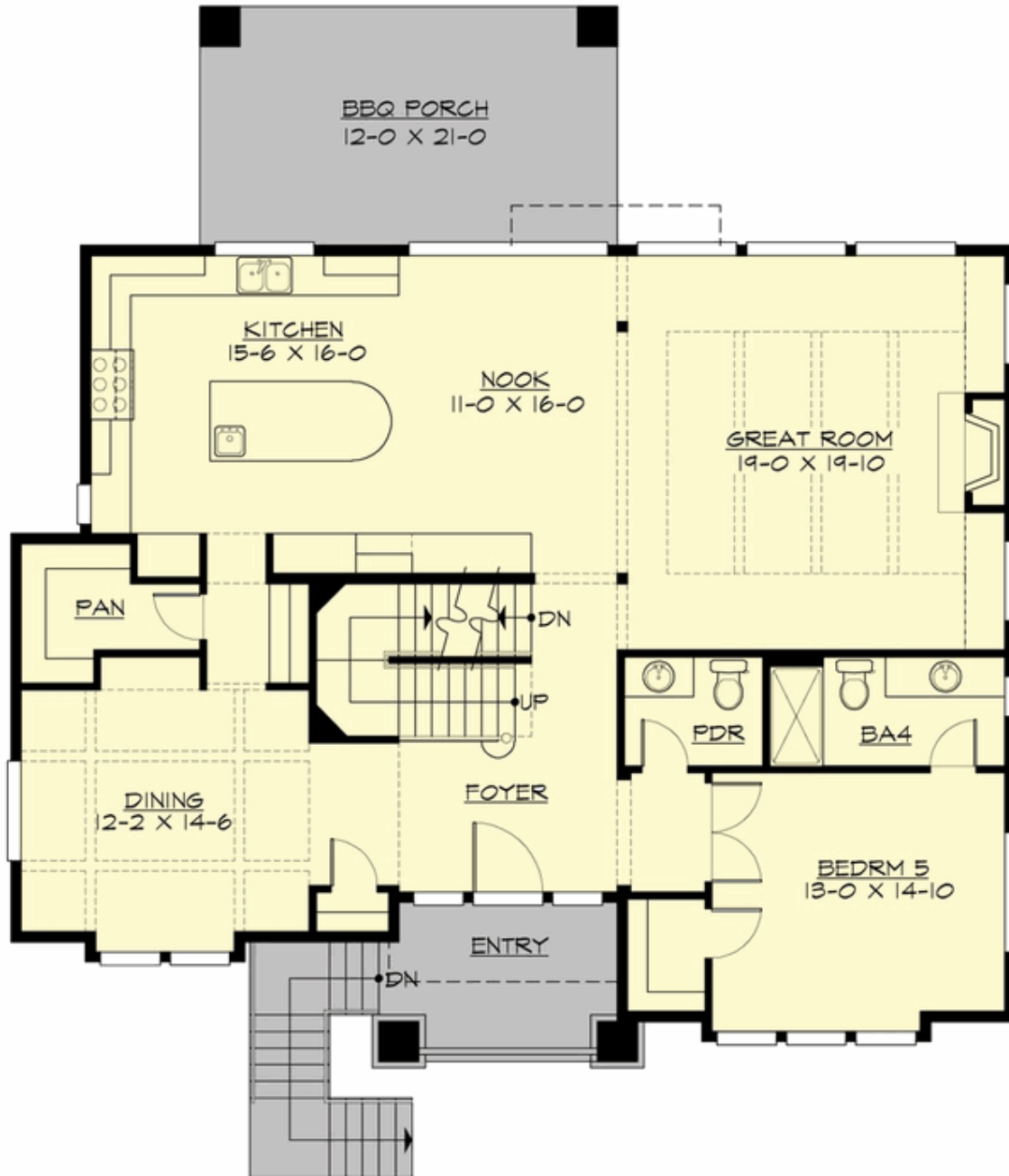
## MACINNESS - PLAN M3949A3FU-0DB

Total Area: 3949 sq. ft.  
Garage Area: 700 sq. ft.  
Garage Area: 700 sq. ft.  
Garage Size: 3  
Stories: 3  
Bedrooms: 5  
Full Baths: 4  
Half Baths: 1  
Width: 50'-6"  
Depth: 51'-0"  
Height: 26'-9"  
Foundation: Daylight Basement



## MACINNESS - PLAN M3949A3FU-0DB

### MAIN FLOOR



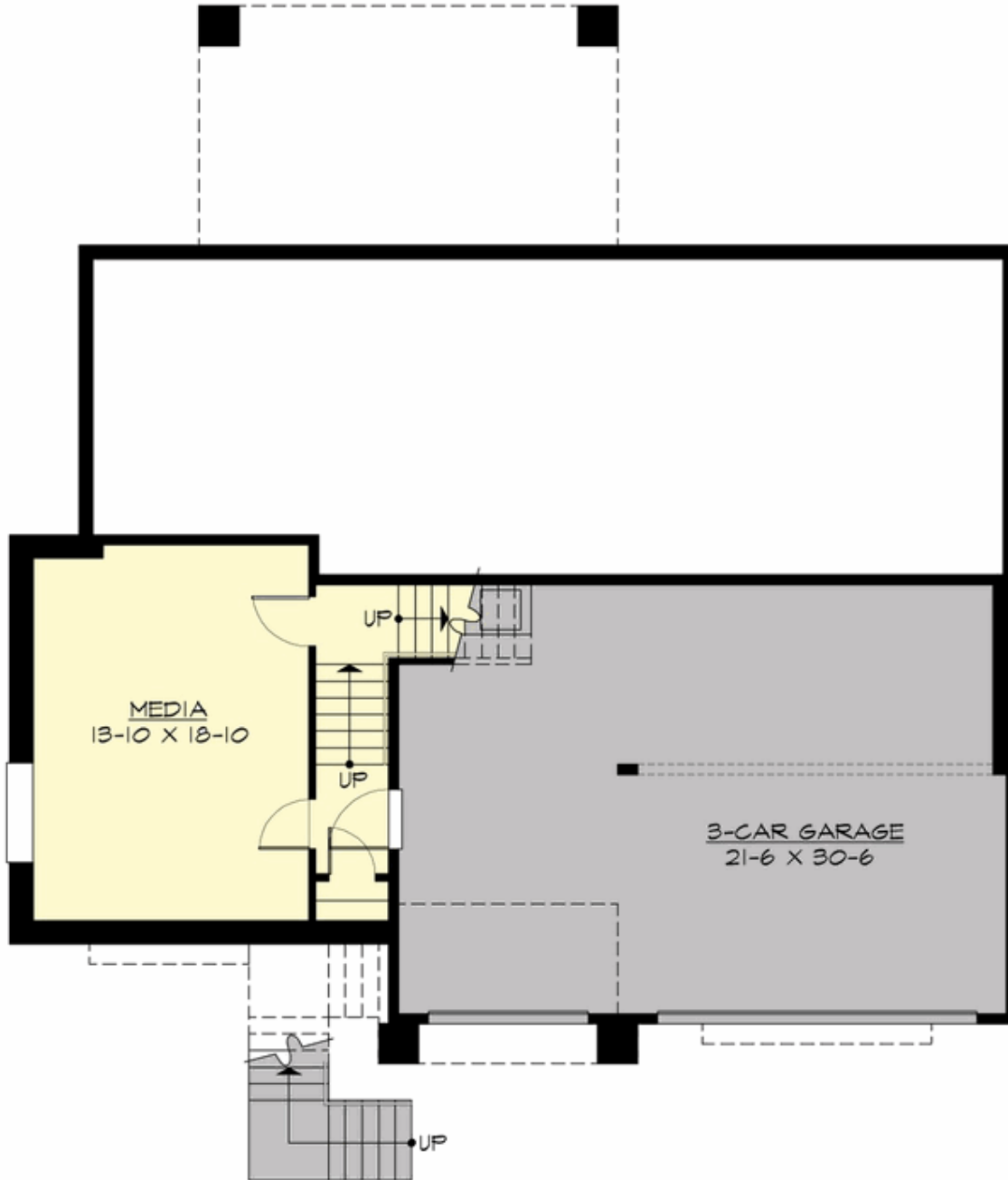
**MACINNESS - PLAN M3949A3FU-0DB**

**UPPER FLOOR**



## MACINNESS - PLAN M3949A3FU-0DB

### LOWER FLOOR





## MACINNESS - PLAN M3949A3FU-0DB

### PLAN DETAILS

#### Area Summary

Total Area:	3949 sq. ft.
Main Floor:	1794 sq. ft.
Upper Floor:	1774 sq. ft.
Lower Floor:	381 sq. ft.
Garage Floor:	700 sq. ft.

#### General Information

Stories:	3
Width:	50'-6"
Depth:	51'-0"
Height:	26'-9"

#### Architectural Style

Craftsman  
Shingle  
Traditional

#### Number of Rooms

Bedrooms:	5
Full Baths:	4
Half Baths:	1

#### Garage

Garage Size:	3
Garage Door Location:	Front
Garage Type:	Under

#### Roof Pitches

Primary:	4:12
Secondary:	3:12

#### Wall Heights

Main:	10'-0"
Upper:	9'-0"
Lower:	9'-0"

#### Foundation Type

Daylight Basement

#### Roof Framing

Combination

#### Floor Load

Live (lbs):	40 PSF
Dead (lbs):	10 PSF

#### Roof Load

Live (lbs):	25 PSF
Dead (lbs):	15 PSF
Wind:	85 MPH

#### Design Features

- Bonus Space @ Upper Floor & Lower Floor
- Front and Rear Porch
- Great Room
- Laundry Room @ Upper Floor
- Master Bedroom @ Upper Floor Rear
- View Lot - Rear