

HAYDEN - PLAN R1762A2S-0

Total Area: 1762 sq. ft.
Garage Area: 467 sq. ft.
Garage Area: 467 sq. ft.
Garage Size: 2
Stories: 1
Bedrooms: 3
Full Baths: 2
Width: 52'-0"
Depth: 62'-0"
Height: 26'-0"
Foundation: Crawl Space

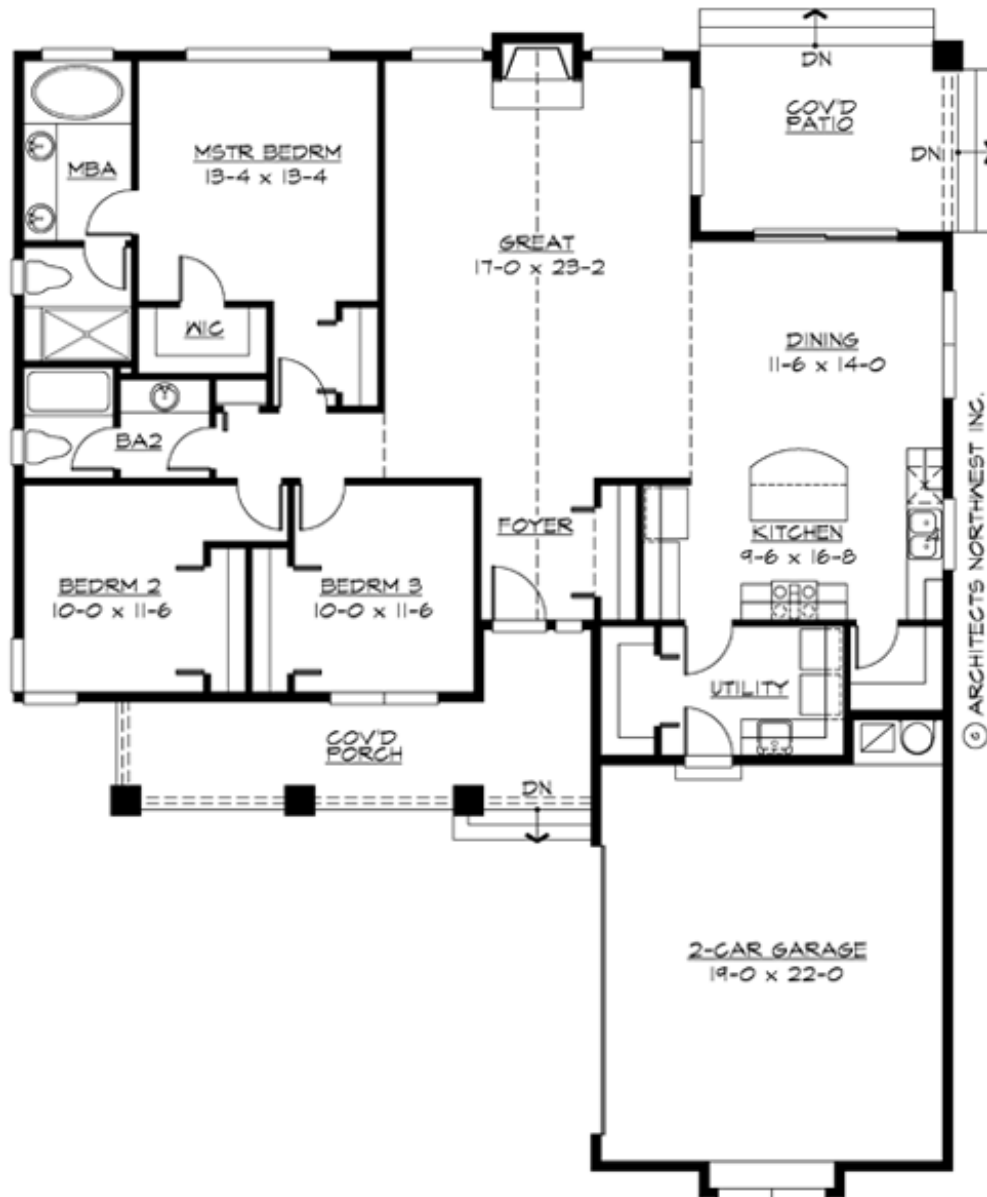


Rustic Rambler Displays Robust Craftsman Style.

With its rugged, lodge-inspired forms and classic detailing, the Hayden's powerful façade offers hints of its dramatic interior. Entering from the welcoming front porch, the visitor is greeted by a vaulted, light-filled foyer that flows into a grand, vaulted great room, immersed in sunlight from a symmetrical expanse of stepped clerestory windows. The great room anchors a spacious family living area that consists of a large covered BBQ porch, dining room, island kitchen with walk-in pantry, and an oversize laundry. The bedroom wing is arranged for maximum privacy, with the luxury master suite to the rear, buffered from two secondary bedrooms by closets and the hall bath.

HAYDEN - PLAN R1762A2S-0

MAIN FLOOR



HAYDEN - PLAN R1762A2S-0

PLAN DETAILS

Area Summary

Total Area: 1762 sq. ft.
Main Floor: 1762 sq. ft.
Garage Floor: 467 sq. ft.

General Information

Stories: 1
Width: 52'-0"
Depth: 62'-0"
Height: 26'-0"

Architectural Style

Bungalow
Cottage
Craftsman

Number of Rooms

Bedrooms: 3
Full Baths: 2

Garage

Garage Size: 2
Garage Door Location: Side

Roof Pitches

Primary: 8:12

Wall Heights

Main: 9'-0"
Upper: 0'-0"
3rd Floor: 0'-0"
Lower: 0'-0"

Foundation Type

Crawl Space

Roof Framing

Trusses

Floor Load

Live (lbs): 40 PSF
Dead (lbs): 10 PSF

Roof Load

Live (lbs): 25 PSF
Dead (lbs): 15 PSF
Wind: 85 MPH

Design Features

- Front and Rear Porch
- Great Room
- Green Plan
- Laundry Room @ Main Floor
- Master Bedroom @ Main Floor Rear
- Small Plan