

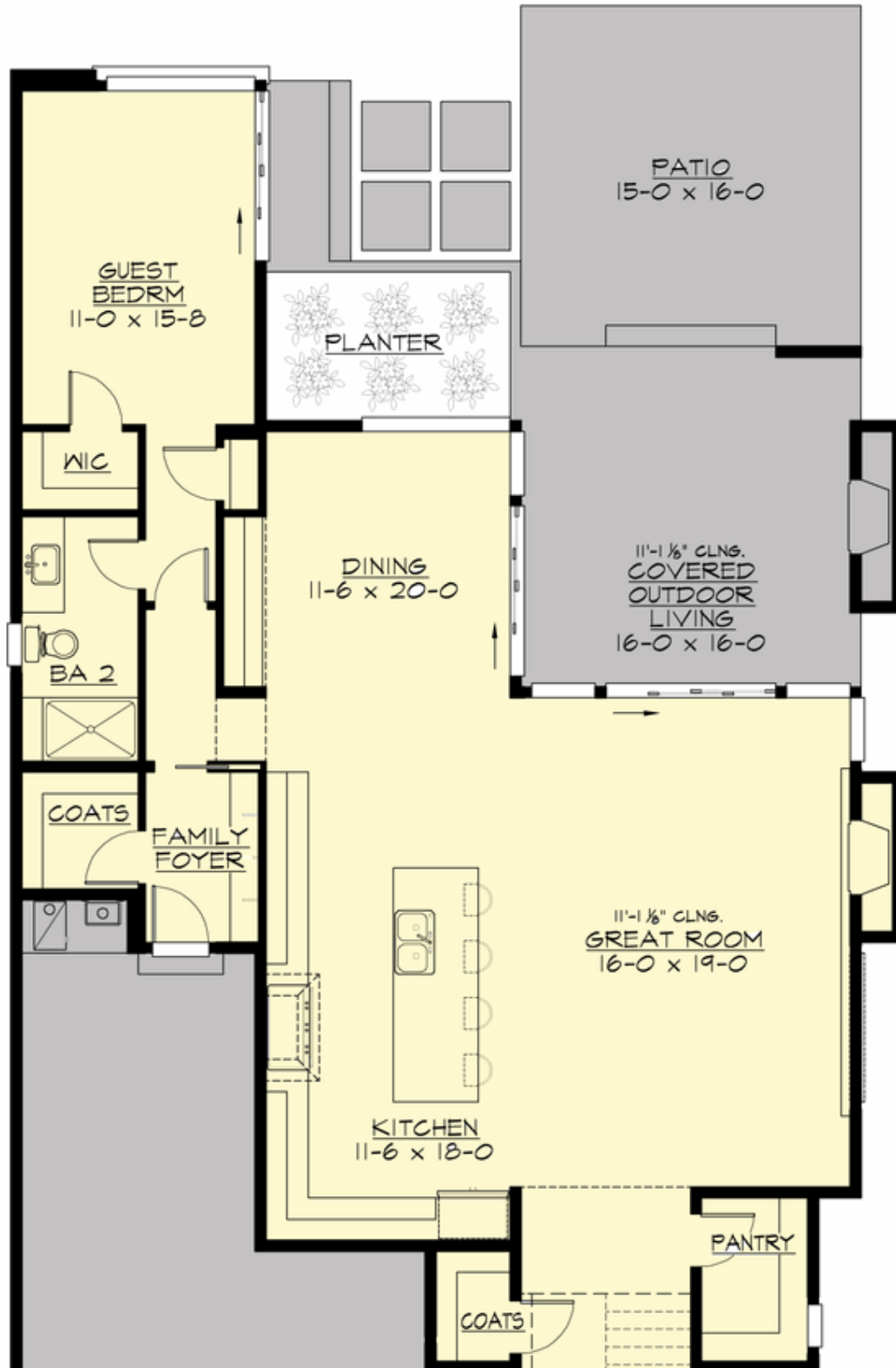
## CORSICA - PLAN M4040A3FT-0

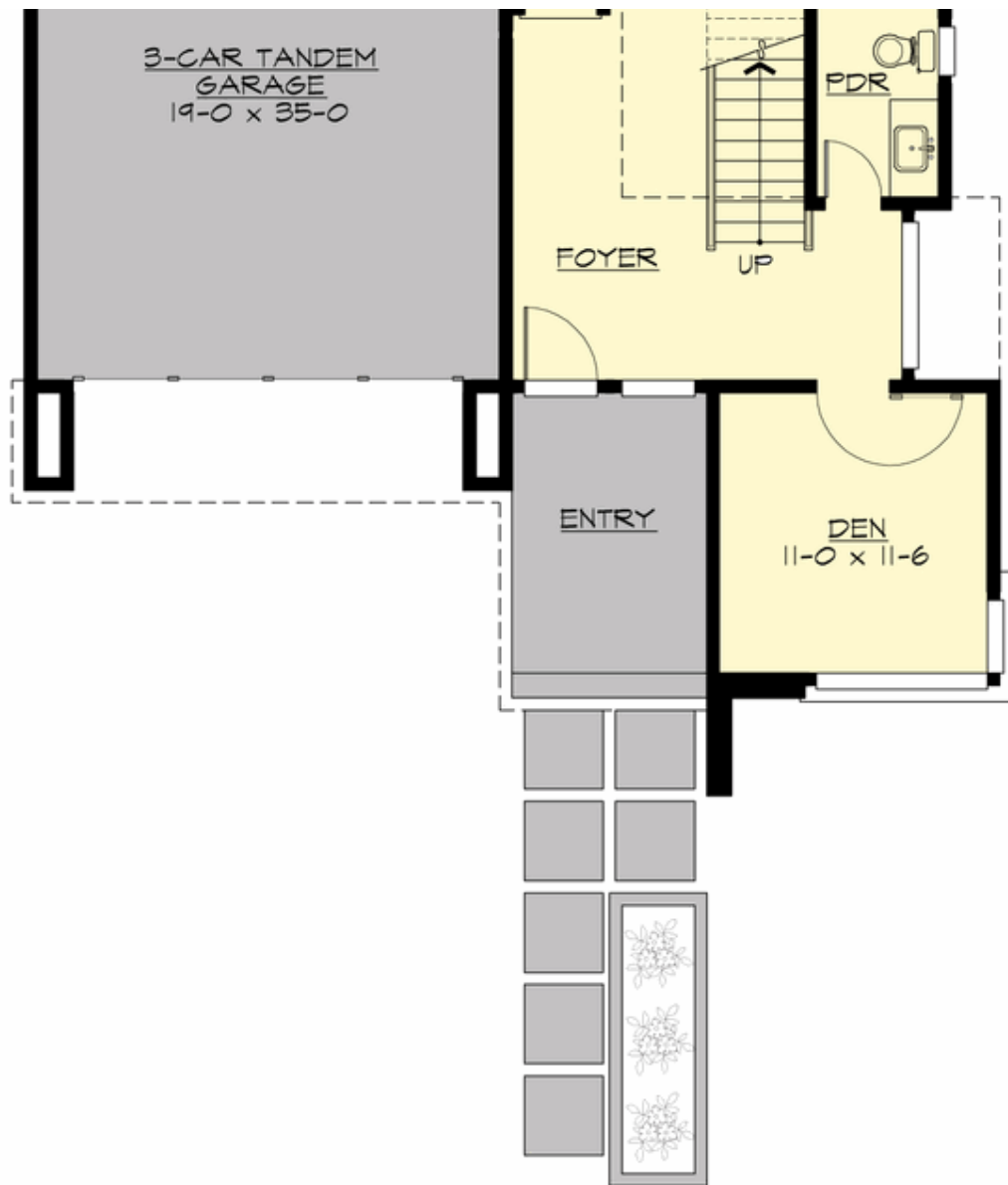
Total Area: 4040 sq. ft.  
Garage Area: 630 sq. ft.  
Garage Area: 630 sq. ft.  
Garage Size: 3  
Stories: 2  
Bedrooms: 5  
Full Baths: 4  
Half Baths: 1  
Width: 40'-0"  
Depth: 93'-6"  
Height: 24'-0"  
Foundation: Crawl Space



**CORSICA - PLAN M4040A3FT-0**

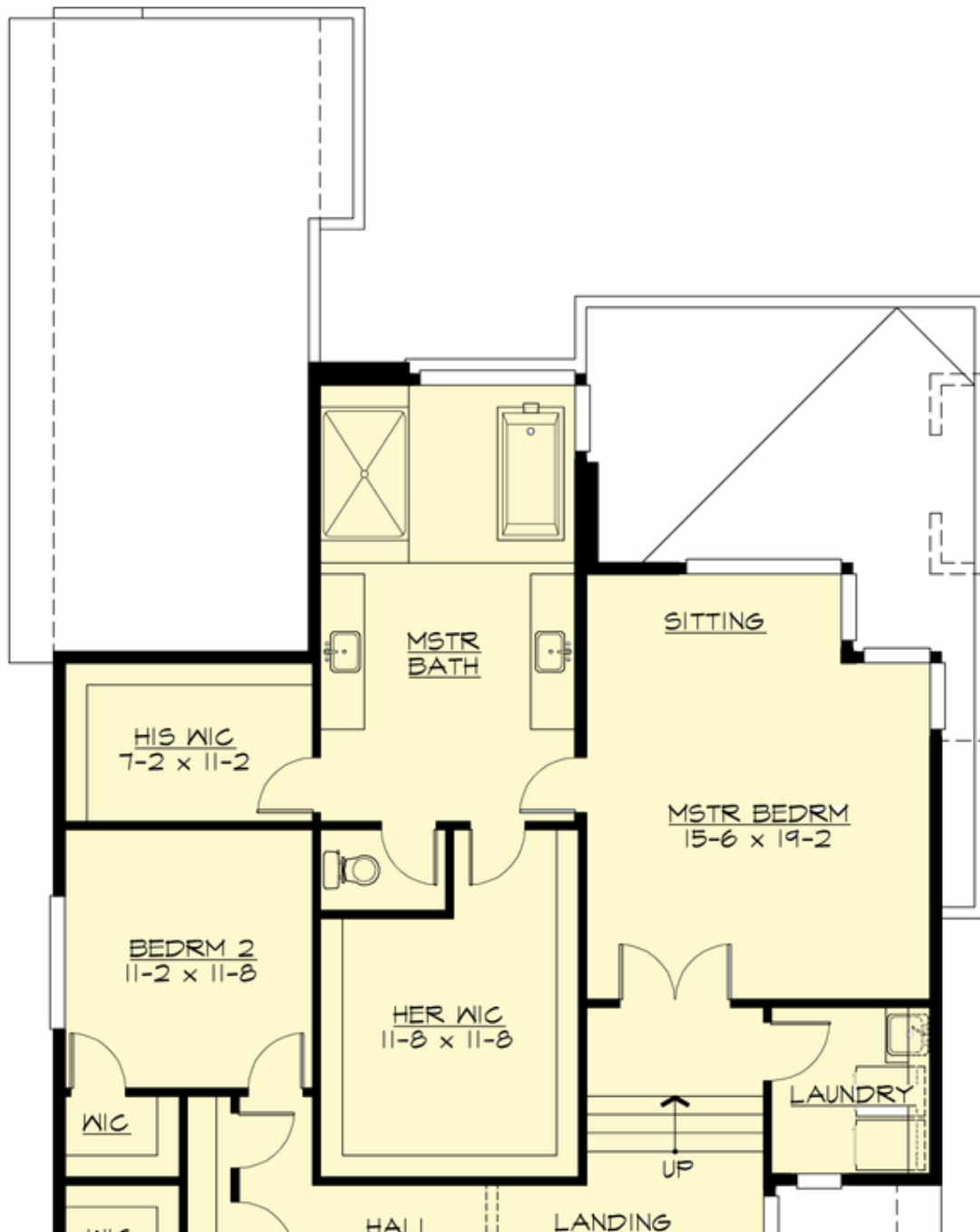
**MAIN FLOOR**

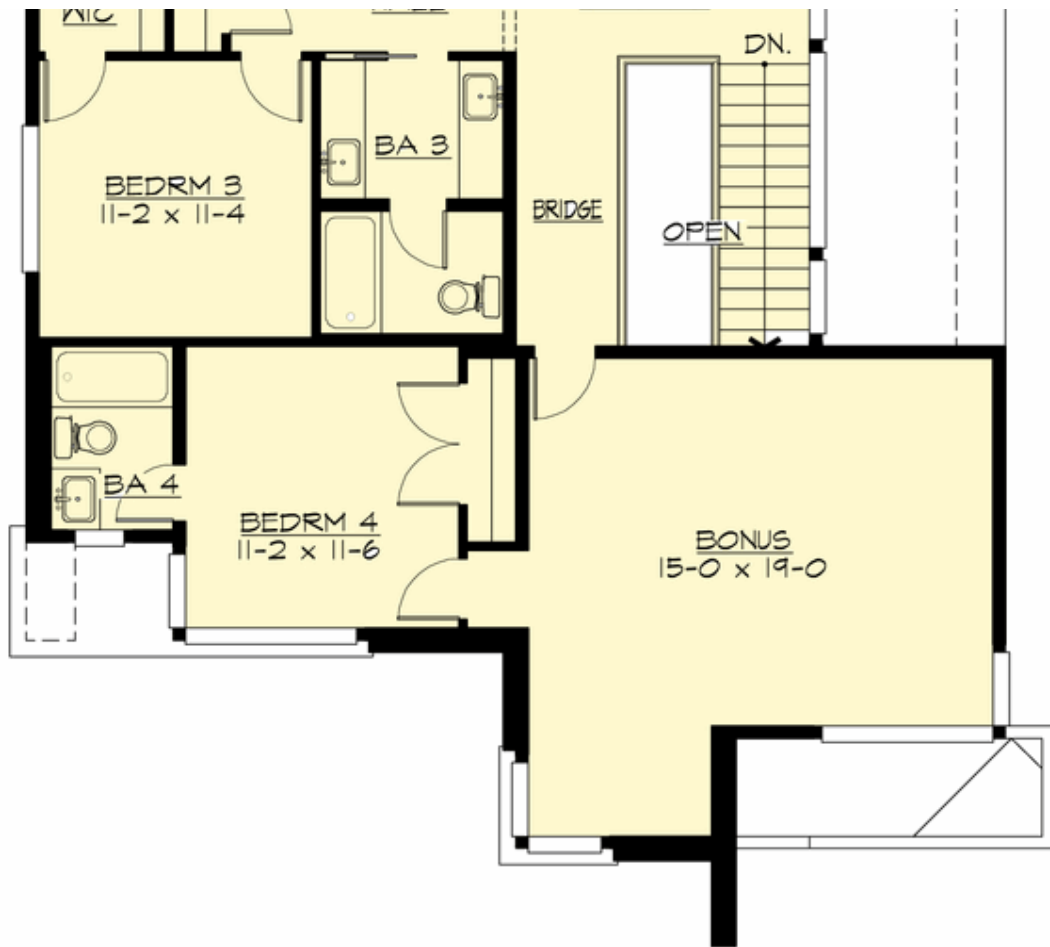




**CORSICA - PLAN M4040A3FT-0**

**UPPER FLOOR**





## **CORSICA - PLAN M4040A3FT-0**

### **PLAN DETAILS**

#### **Area Summary**

Total Area: 4040 sq. ft.  
Main Floor: 1880 sq. ft.  
Upper Floor: 2160 sq. ft.  
Garage Floor: 630 sq. ft.

#### **General Information**

Stories: 2  
Width: 40'-0"  
Depth: 93'-6"  
Height: 24'-0"

#### **Architectural Style**

Contemporary  
Modern  
Northwest

#### **Number of Rooms**

Bedrooms: 5  
Full Baths: 4  
Half Baths: 1

#### **Garage**

Garage Size: 3  
Garage Door Location: Front  
Garage Type: Tandem

#### **Roof Pitches**

Primary: 1:12

#### **Wall Heights**

Main: 11'-0"  
Upper: 9'-0"

#### **Foundation Type**

Crawl Space

#### **Roof Framing**

Trusses

#### **Floor Load**

Live (lbs): 40 PSF  
Dead (lbs): 10 PSF

#### **Roof Load**

Live (lbs): 25 PSF  
Dead (lbs): 15 PSF  
Wind: 85 MPH

#### **Design Features**

- Bonus Space @ Upper Floor
- Den/Office
- Great Room
- Laundry Room @ Upper Floor
- Master Bedroom @ Upper Floor Rear
- Narrow Lot
- Rear Porch
- View Lot - Rear