

## PINEGREEN - PLAN M3635A3S-0

Total Area: 3635 sq. ft.  
Garage Area: 928 sq. ft.  
Garage Area: 928 sq. ft.  
Garage Size: 3  
Stories: 2  
Bedrooms: 3  
Full Baths: 3  
Width: 68'-0"  
Depth: 94'-0"  
Height: 24'-0"  
Foundation: Crawl Space



## PINEGREEN - PLAN M3635A3S-0

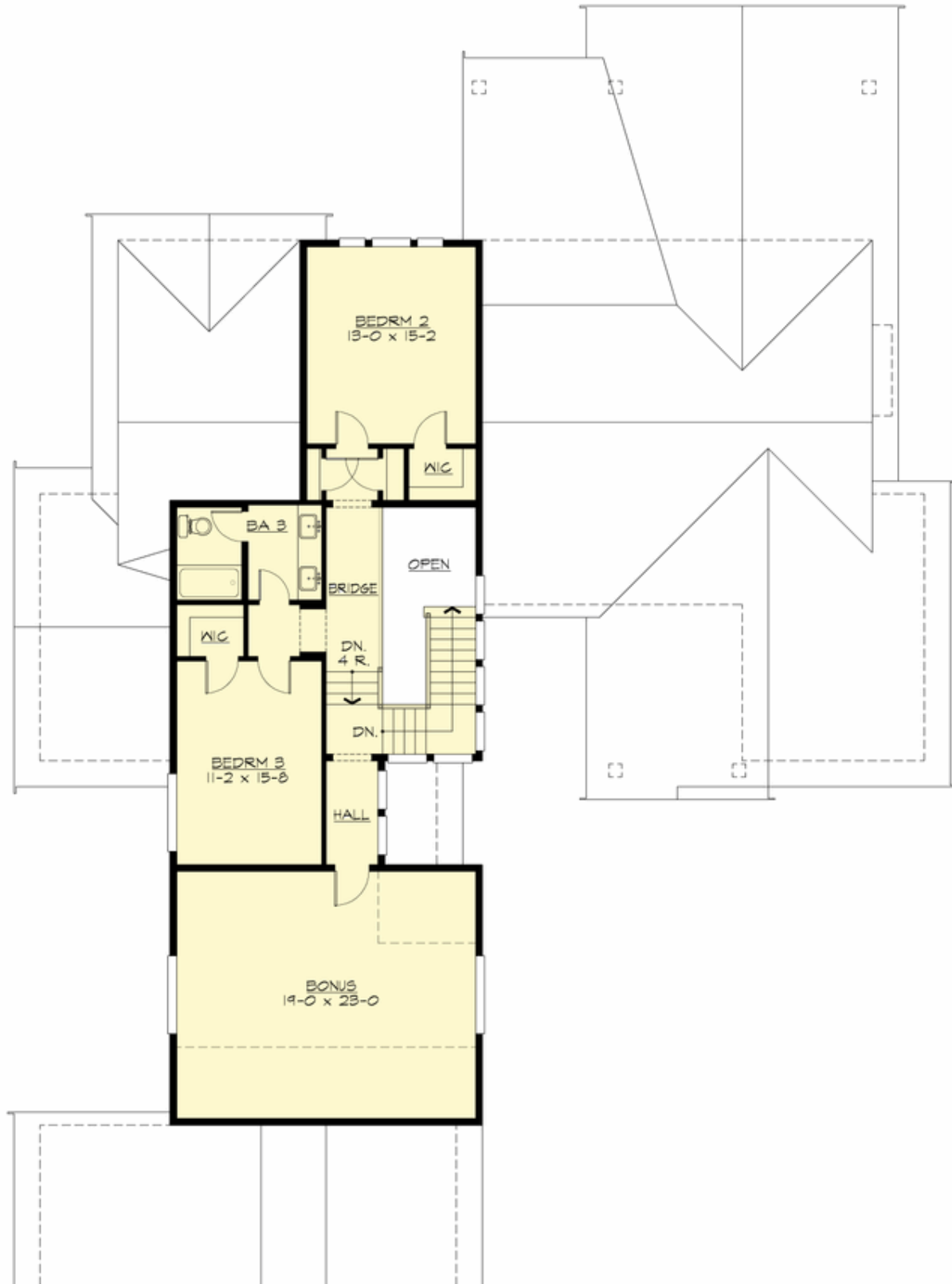
### MAIN FLOOR





## PINEGREEN - PLAN M3635A3S-0

### UPPER FLOOR





## PINEGREEN - PLAN M3635A3S-0

### PLAN DETAILS

#### Area Summary

Total Area: 3635 sq. ft.  
Main Floor: 2407 sq. ft.  
Upper Floor: 1228 sq. ft.  
Garage Floor: 928 sq. ft.

#### General Information

Stories: 2  
Width: 68'-0"  
Depth: 94'-0"  
Height: 24'-0"

#### Architectural Style

Craftsman  
Lodge  
Shingle

#### Number of Rooms

Bedrooms: 3  
Full Baths: 3

#### Garage

Garage Size: 3  
Garage Door Location: Side

#### Roof Pitches

Primary: 10:12  
Secondary: 3:12

#### Wall Heights

Main: 10'-0"  
Upper: 8'-0"

#### Foundation Type

Crawl Space

#### Roof Framing

Combination

#### Floor Load

Live (lbs): 40 PSF  
Dead (lbs): 10 PSF

#### Roof Load

Live (lbs): 52 PSF  
Dead (lbs): 15 PSF  
Wind: 85 MPH

#### Design Features

- Bonus Space @ Upper Floor
- Den/Office
- Great Room
- Laundry Room @ Main Floor
- Master Bedroom @ Main Floor Rear
- Rear Porch
- Suncadia Collection
- Vacation Plan
- View Lot - Rear