

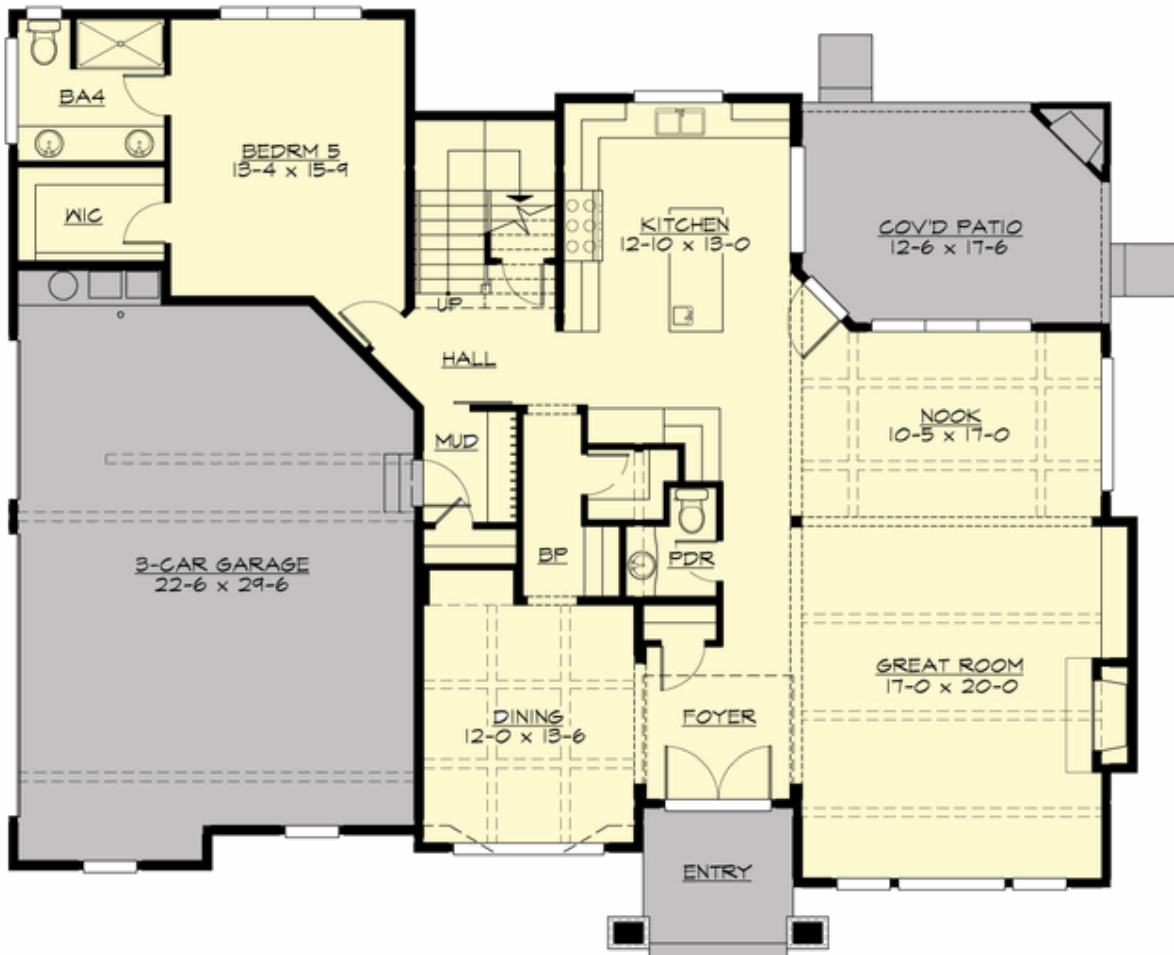
## MACOWEN PARK - PLAN M4882A3S-1

Total Area: 4996 sq. ft.  
Garage Area: 713 sq. ft.  
Garage Area: 713 sq. ft.  
Garage Size: 3  
Stories: 3  
Bedrooms: 5  
Full Baths: 4  
Half Baths: 2  
Width: 64'-0"  
Depth: 53'-0"  
Height: 33'-2"  
Foundation: Crawl Space



## MACOWEN PARK - PLAN M4882A3S-1

### MAIN FLOOR



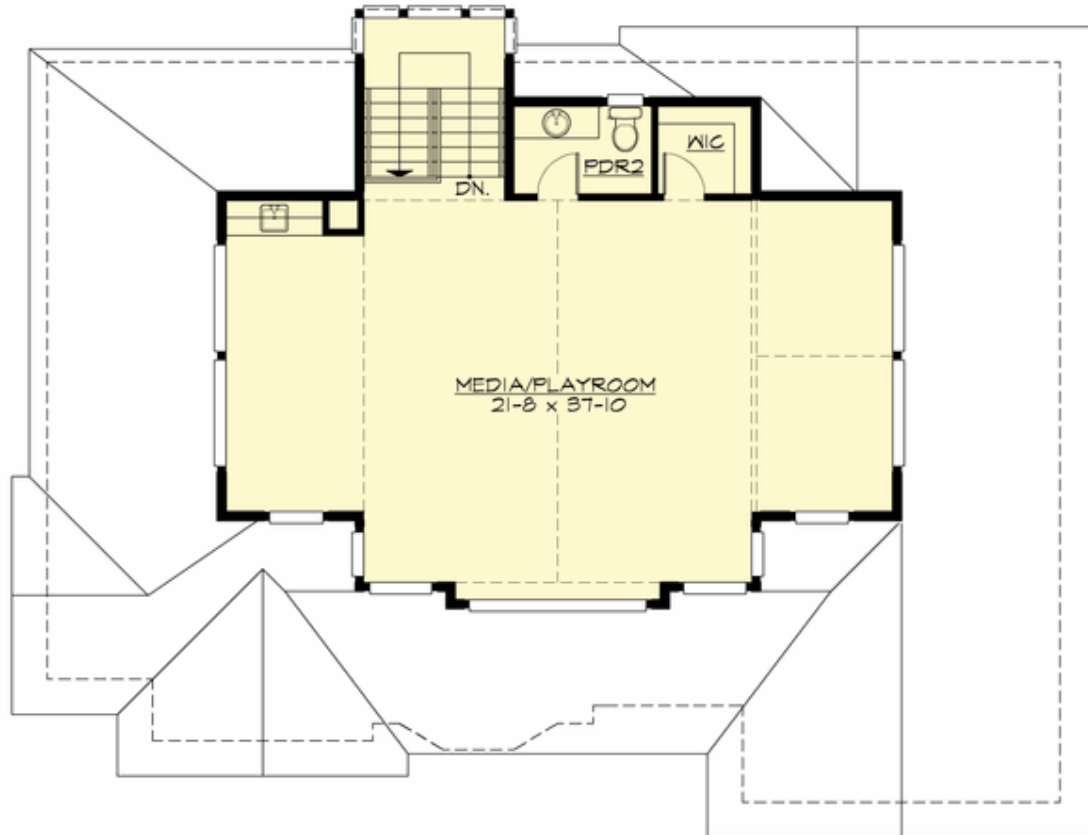
## MACOWEN PARK - PLAN M4882A3S-1

### UPPER FLOOR



**MACOWEN PARK - PLAN M4882A3S-1**

**THIRD FLOOR**





## MACOWEN PARK - PLAN M4882A3S-1

### PLAN DETAILS

#### Area Summary

Total Area:	4996 sq. ft.
Main Floor:	1885 sq. ft.
Upper Floor:	2199 sq. ft.
3rd Floor:	912 sq. ft.
Garage Floor:	713 sq. ft.

#### General Information

Stories:	3
Width:	64'-0"
Depth:	53'-0"
Height:	33'-2"

#### Architectural Style

Craftsman  
Shingle  
Traditional

#### Number of Rooms

Bedrooms:	5
Full Baths:	4
Half Baths:	2

#### Garage

Garage Size:	3
Garage Door Location:	Side

#### Roof Pitches

Primary:	4:12
----------	------

#### Wall Heights

Main:	10'-0"
Upper:	9'-0"
3rd Floor:	8'-0"

#### Foundation Type

Crawl Space

#### Roof Framing

Trusses

#### Floor Load

Live (lbs):	40 PSF
Dead (lbs):	10 PSF

#### Roof Load

Live (lbs):	25 PSF
Dead (lbs):	15 PSF
Wind:	85 MPH

#### Design Features

- Bonus Space @ Third Floor
- Front and Rear Porch
- Great Room
- Laundry Room @ Upper Floor
- Master Bedroom @ Upper Floor Front
- View Lot - Front
- Wide Lot