

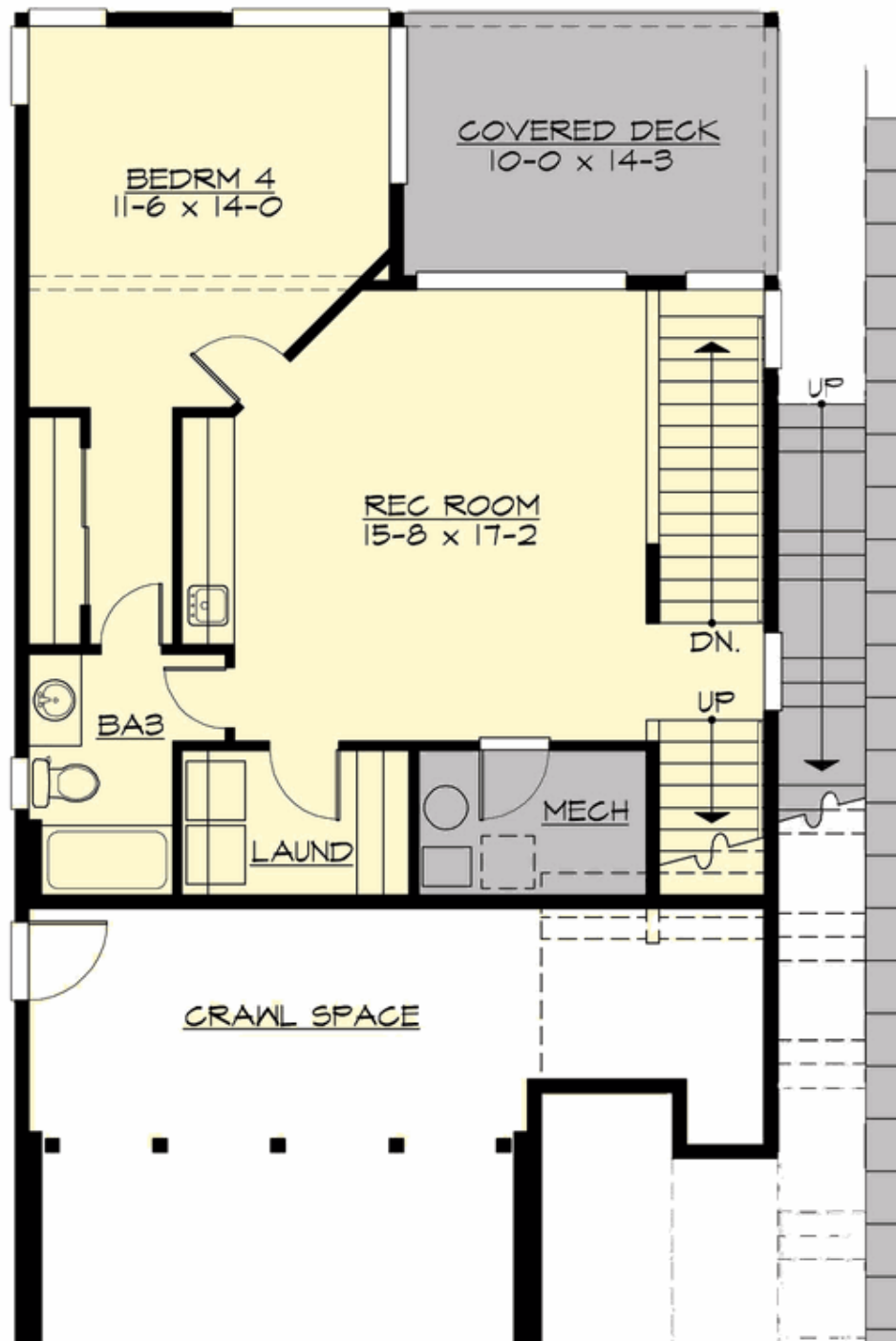
## BONAIR - PLAN S3468A2F-0DB

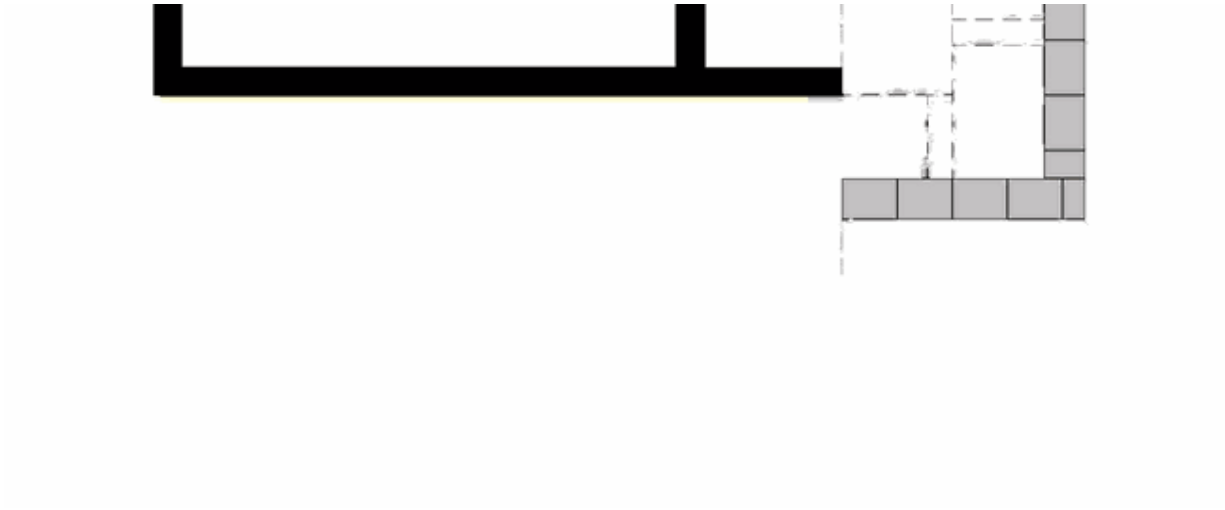
Total Area: 3484 sq. ft.  
Garage Area: 396 sq. ft.  
Garage Area: 396 sq. ft.  
Garage Size: 2  
Stories: 4  
Bedrooms: 5  
Full Baths: 4  
Half Baths: 1  
Width: 29'-0"  
Depth: 54'-0"  
Height: 32'-0"  
Foundation: Daylight Basement



**BONAIR - PLAN S3468A2F-0DB**

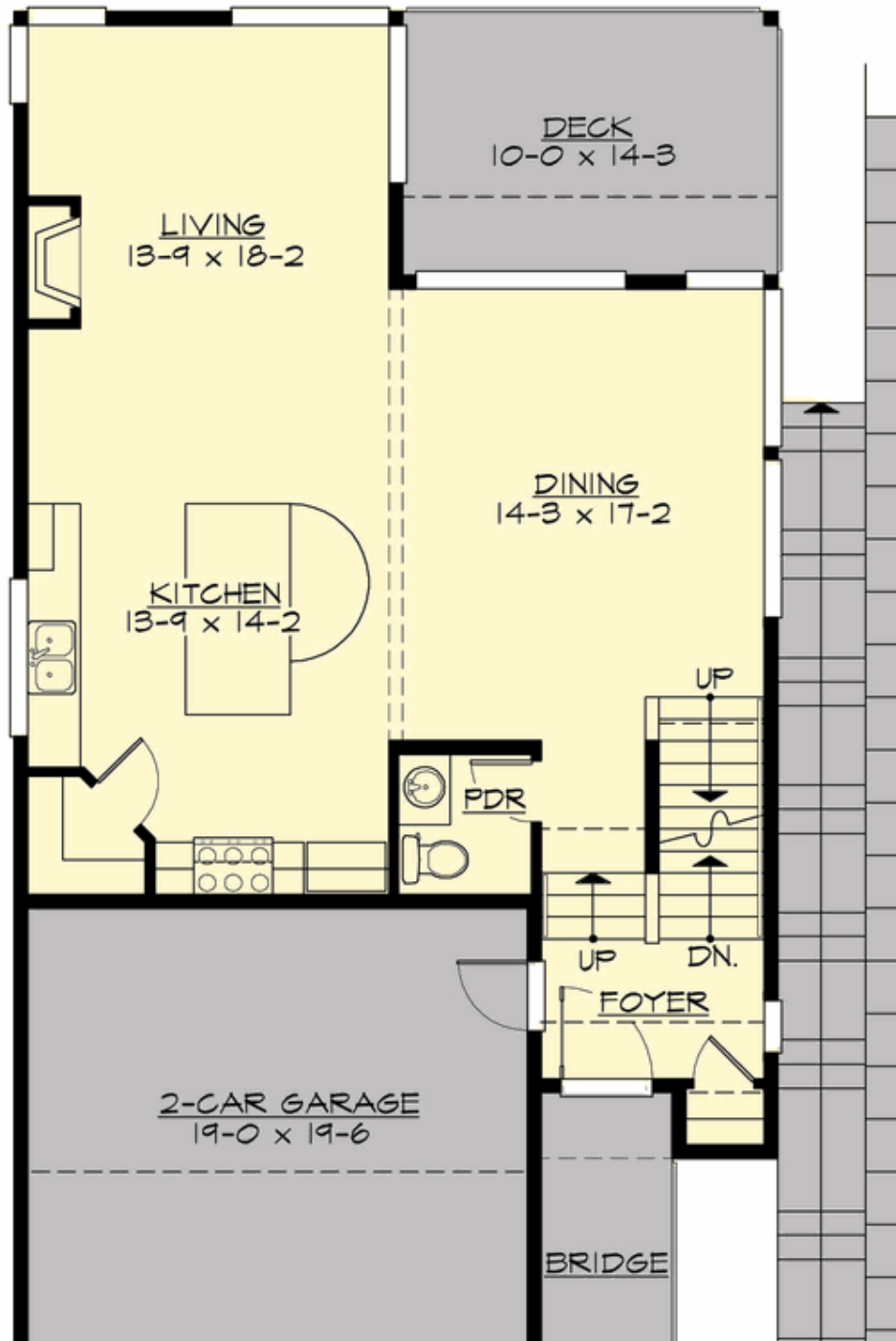
**MAIN FLOOR**

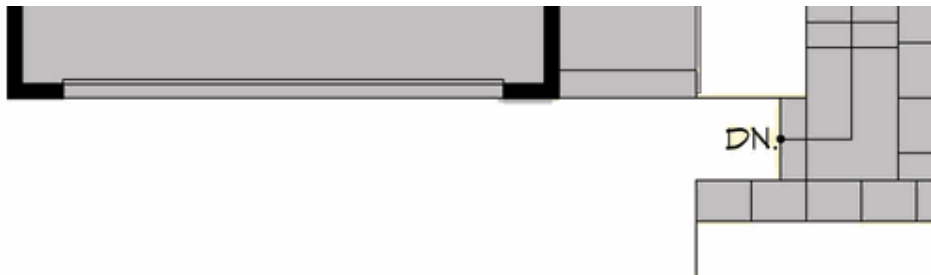




## BONAIR - PLAN S3468A2F-0DB

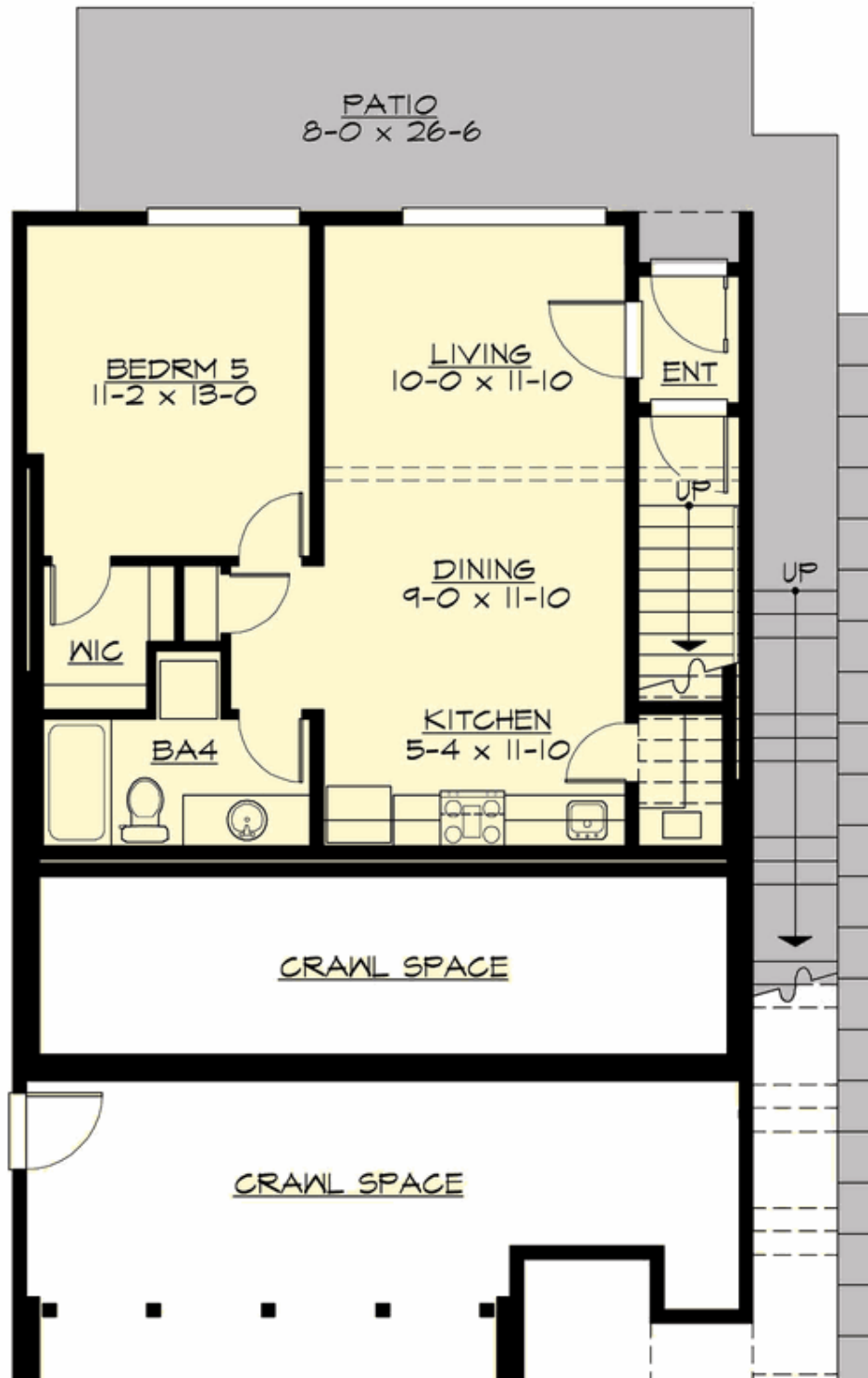
### UPPER FLOOR

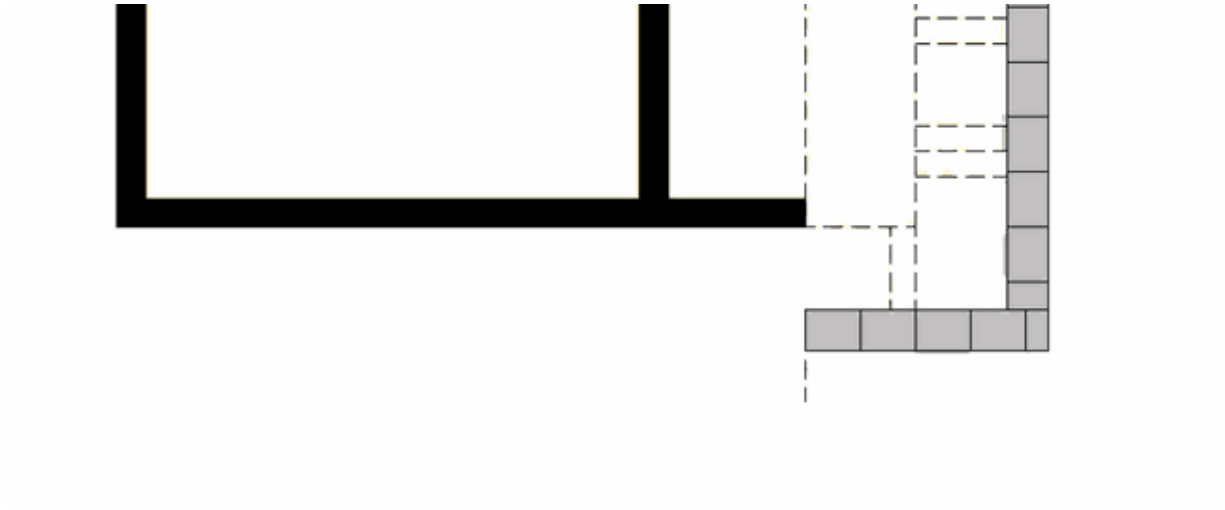




**BONAIR - PLAN S3468A2F-0DB**

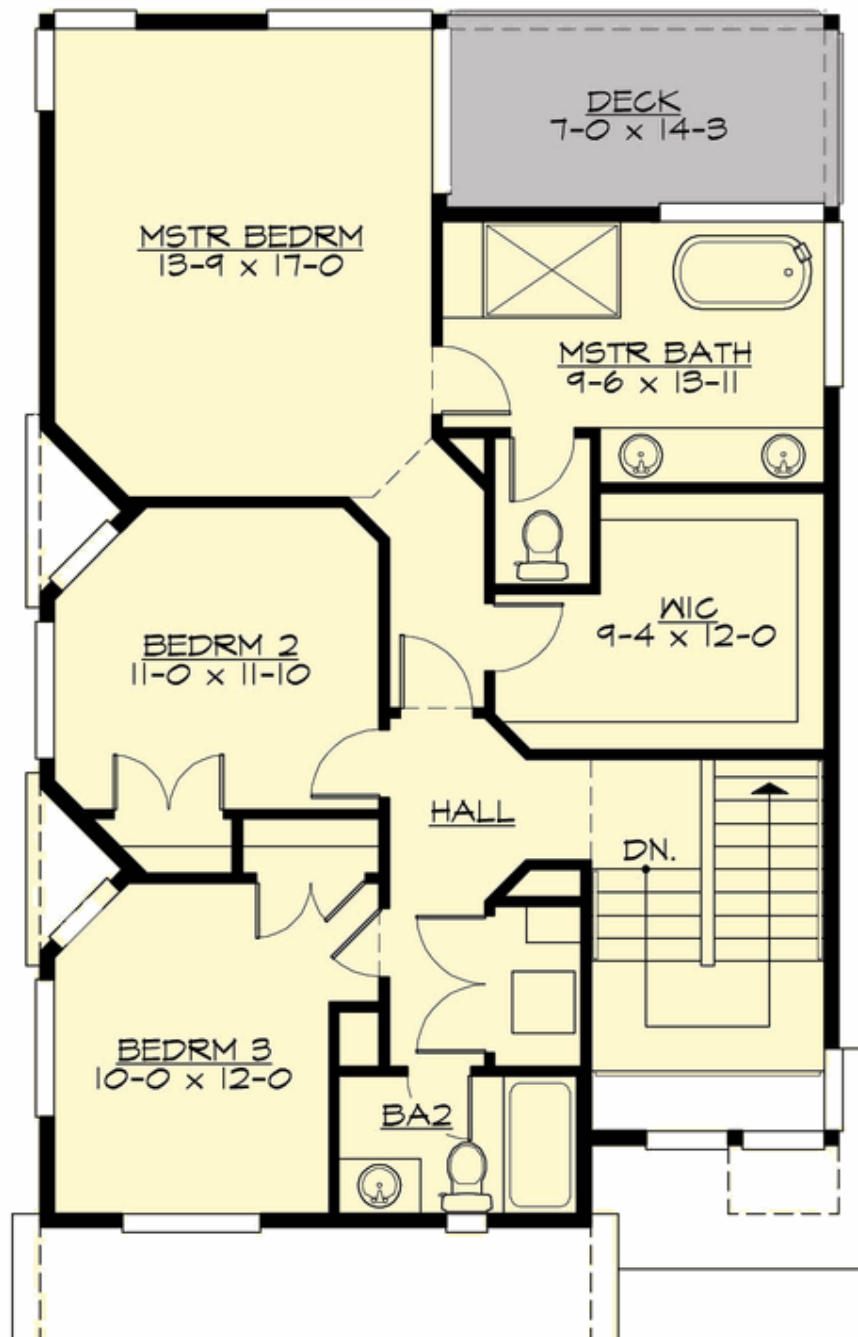
**LOWER FLOOR**





**BONAIR - PLAN S3468A2F-0DB**

**THIRD FLOOR**









## BONAIR - PLAN S3468A2F-0DB

### PLAN DETAILS

#### Area Summary

Total Area:	3484 sq. ft.
Main Floor:	780 sq. ft.
Upper Floor:	920 sq. ft.
3rd Floor:	1023 sq. ft.
Lower Floor:	667 sq. ft.
Garage Floor:	396 sq. ft.

#### General Information

Stories:	4
Width:	29'-0"
Depth:	54'-0"
Height:	32'-0"

#### Architectural Style

Contemporary  
Modern  
Northwest

#### Number of Rooms

Bedrooms:	5
Full Baths:	4
Half Baths:	1

#### Garage

Garage Size:	2
Garage Door Location:	Front

#### Roof Pitches

Primary:	4:12
----------	------

#### Wall Heights

Main:	8'-0"
Upper:	9'-0"
3rd Floor:	8'-0"
Lower:	8'-0"

#### Foundation Type

Daylight Basement

#### Roof Framing

Trusses

#### Floor Load

Live (lbs):	40 PSF
Dead (lbs):	10 PSF

#### Roof Load

Live (lbs):	25 PSF
Dead (lbs):	15 PSF
Wind:	85 MPH

#### Design Features

- Bonus Space @ Lower Floor
- Great Room
- Laundry Room @ Upper Floor
- Master Bedroom @ Upper Floor Rear
- Narrow Lot
- Rear Porch