

## MARYMOOR - PLAN R2320A2S-0

Total Area: 2320 sq. ft.  
Garage Area: 530 sq. ft.  
Garage Area: 530 sq. ft.  
Garage Size: 2  
Stories: 1  
Bedrooms: 3  
Full Baths: 2  
Width: 62'-0"  
Depth: 66'-0"  
Height: 24'-0"  
Foundation: Crawl Space

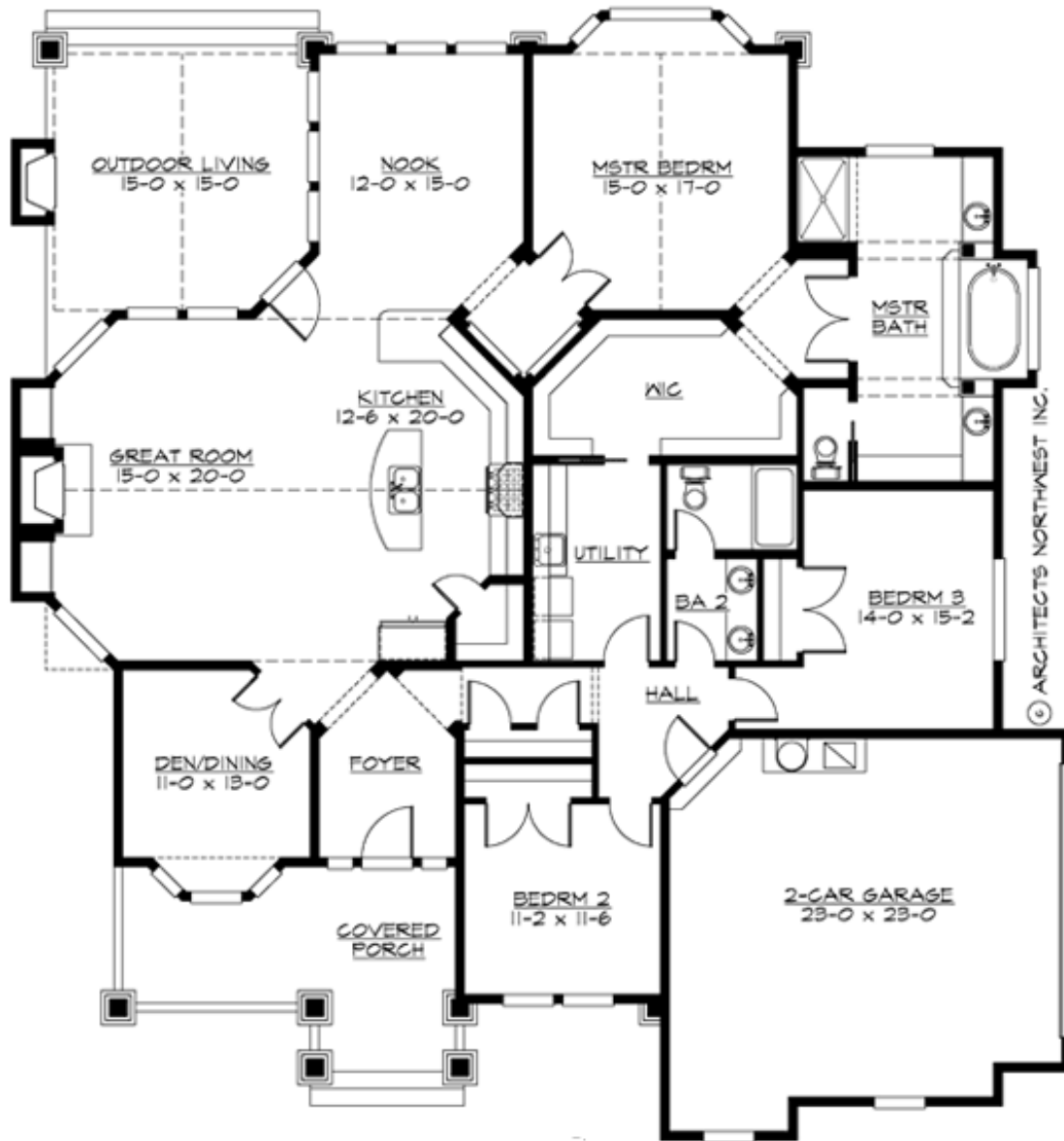


### ***Country Cottage Charm Meets Rustic Mountain Lodge***

The Marymoor is a popular compact Rambler that combines a dynamic exterior facade composed from elements of cottage, country, craftsman and lodge styles with an open floor plan that fits today's informal lifestyles. Large front and rear covered porches allow for relaxed outdoor living, while the internal separation of the deluxe master suite and secondary bedrooms maximizes occupant privacy. The spacious vaulted great room, gourmet island kitchen, and multi-windowed nook combine to create a delightful family area. A flexible front room can be used as a den or formal dining. A handy feature is the double laundry access, from both the secondary bedroom hallway and the master walk-in closet.

## MARYMOOR - PLAN R2320A2S-0

### MAIN FLOOR



## MARYMOOR - PLAN R2320A2S-0

### PLAN DETAILS

#### Area Summary

Total Area: 2320 sq. ft.  
Main Floor: 2320 sq. ft.  
Garage Floor: 530 sq. ft.

#### General Information

Stories: 1  
Width: 62'-0"  
Depth: 66'-0"  
Height: 24'-0"

#### Architectural Style

Cottage  
Lodge  
Traditional

#### Number of Rooms

Bedrooms: 3  
Full Baths: 2

#### Garage

Garage Size: 2  
Garage Door Location: Side

#### Roof Pitches

Primary: 10:12  
Secondary: 3:12

#### Wall Heights

Main: 10'-0"  
Upper: 0'-0"  
3rd Floor: 0'-0"  
Lower: 0'-0"

#### Foundation Type

Crawl Space

#### Roof Framing

Trusses

#### Floor Load

Live (lbs): 40 PSF  
Dead (lbs): 10 PSF

#### Roof Load

Live (lbs): 25 PSF  
Dead (lbs): 15 PSF  
Wind: 85 MPH

#### Design Features

- Best Selling Plan
- Den/Office
- Front and Rear Porch
- Great Room
- Green Plan
- Laundry Room @ Main Floor
- Master Bedroom @ Main Floor Rear
- Small Plan
- Wide Lot