

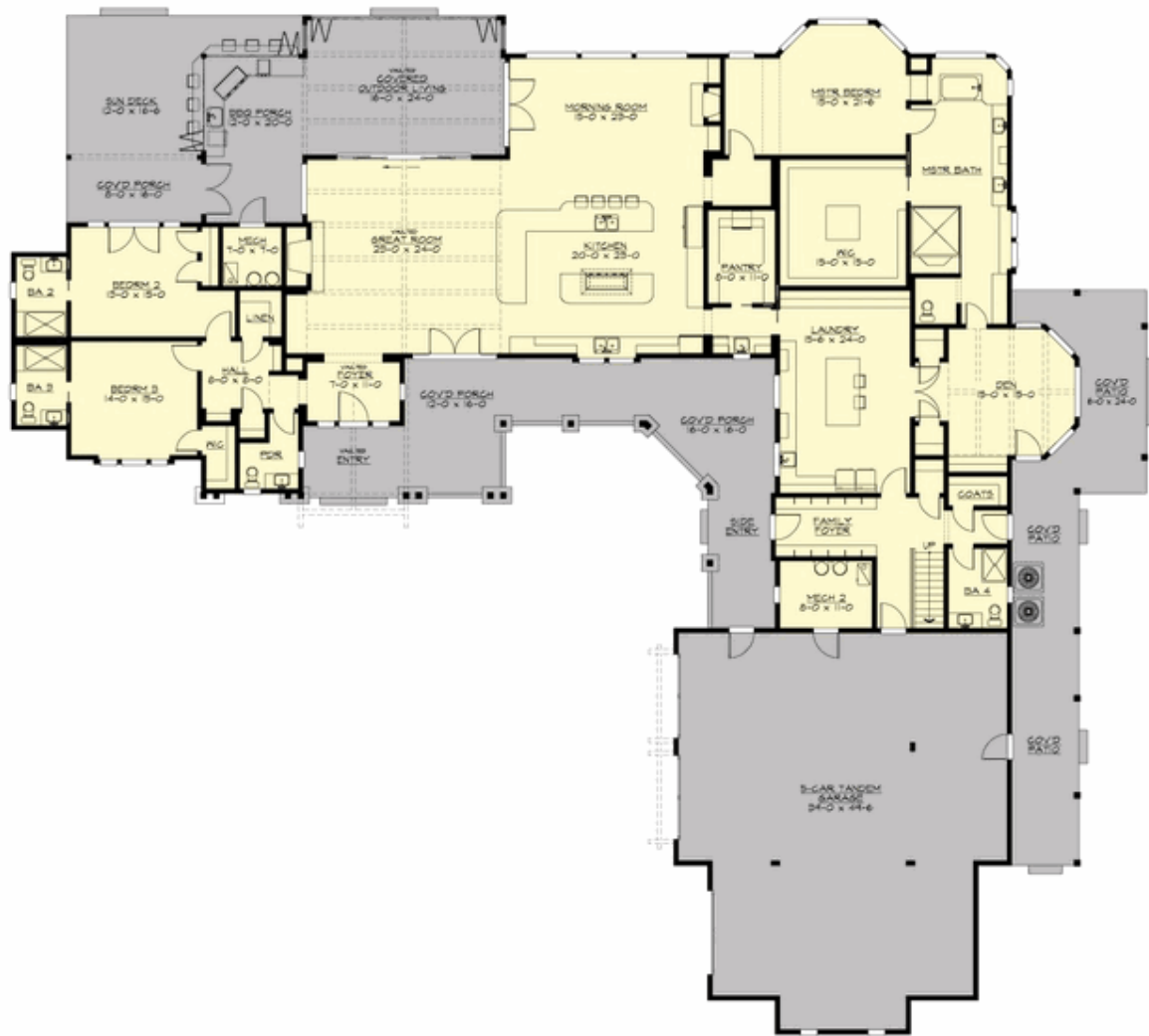
## TREASURE VALLEY - PLAN R5625A5ST-0

Total Area: 5625 sq. ft.  
Garage Area: 1855 sq. ft.  
Garage Size: 5+  
Stories: 2  
Bedrooms: 4  
Full Baths: 4  
Half Baths: 1  
Width: 134'-6"  
Depth: 120'-6"  
Height: 27'-6"  
Foundation: Crawl Space



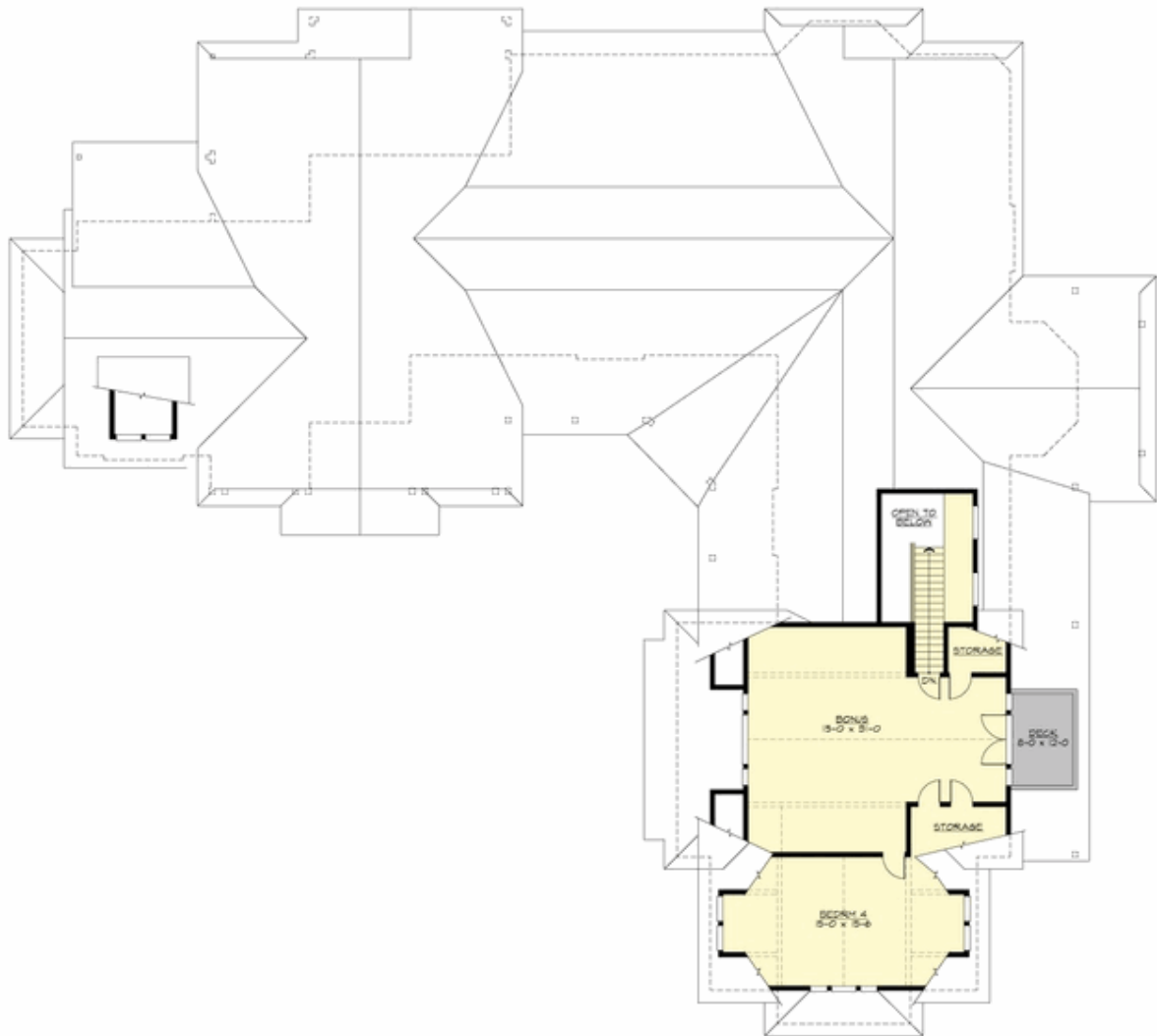
**TREASURE VALLEY - PLAN R5625A5ST-0**

## MAIN FLOOR



## TREASURE VALLEY - PLAN R5625A5ST-0

### UPPER FLOOR





## TREASURE VALLEY - PLAN R5625A5ST-0

### PLAN DETAILS

#### Area Summary

Total Area: 5625 sq. ft.  
Main Floor: 4650 sq. ft.  
Upper Floor: 975 sq. ft.  
Garage Floor: 1855 sq. ft.

#### General Information

Stories: 2  
Width: 134'-6"  
Depth: 120'-6"  
Height: 27'-6"

#### Architectural Style

Country  
Farmhouse  
Modern

#### Number of Rooms

Bedrooms: 4  
Full Baths: 4  
Half Baths: 1

#### Garage

Garage Size: 5+  
Garage Door Location: Side  
Garage Type: Tandem

#### Roof Pitches

Primary: 10:12  
Secondary: 5:12

#### Wall Heights

Main: 10'-0"  
Upper: 8'-0"

#### Foundation Type

Crawl Space

#### Roof Framing

Combination

#### Floor Load

Live (lbs): 40 PSF  
Dead (lbs): 10 PSF

#### Roof Load

Live (lbs): 25 PSF  
Dead (lbs): 15 PSF  
Wind: 85 MPH

#### Design Features

- Bonus Space @ Upper Floor
- Den/Office
- Front and Rear Porch
- Great Room
- Laundry Room @ Main Floor
- Master Bedroom @ Main Floor Rear
- View Lot - Rear
- Wide Lot