

## MONTEVISTA - PLAN M5191B3FTU-1DB

Total Area: 5099 sq. ft.  
Garage Area: 795 sq. ft.  
Garage Area: 795 sq. ft.  
Garage Size: 3  
Stories: 3  
Bedrooms: 5  
Full Baths: 5  
Half Baths: 1  
Width: 46'-0"  
Depth: 72'-6"  
Height: 26'-11"  
Foundation: Daylight Basement



## MONTEVISTA - PLAN M5191B3FTU-1DB

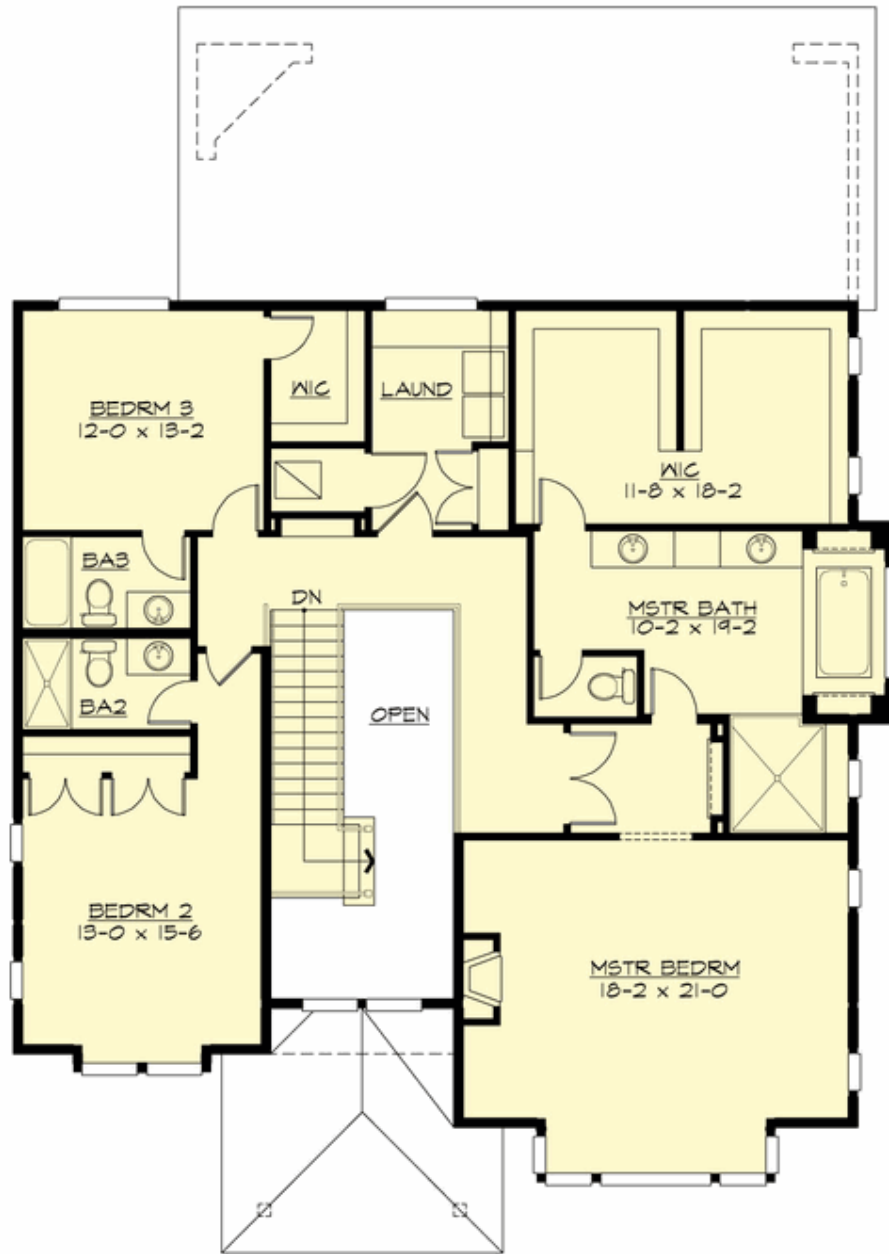
### MAIN FLOOR





**MONTEVISTA - PLAN M5191B3FTU-1DB**

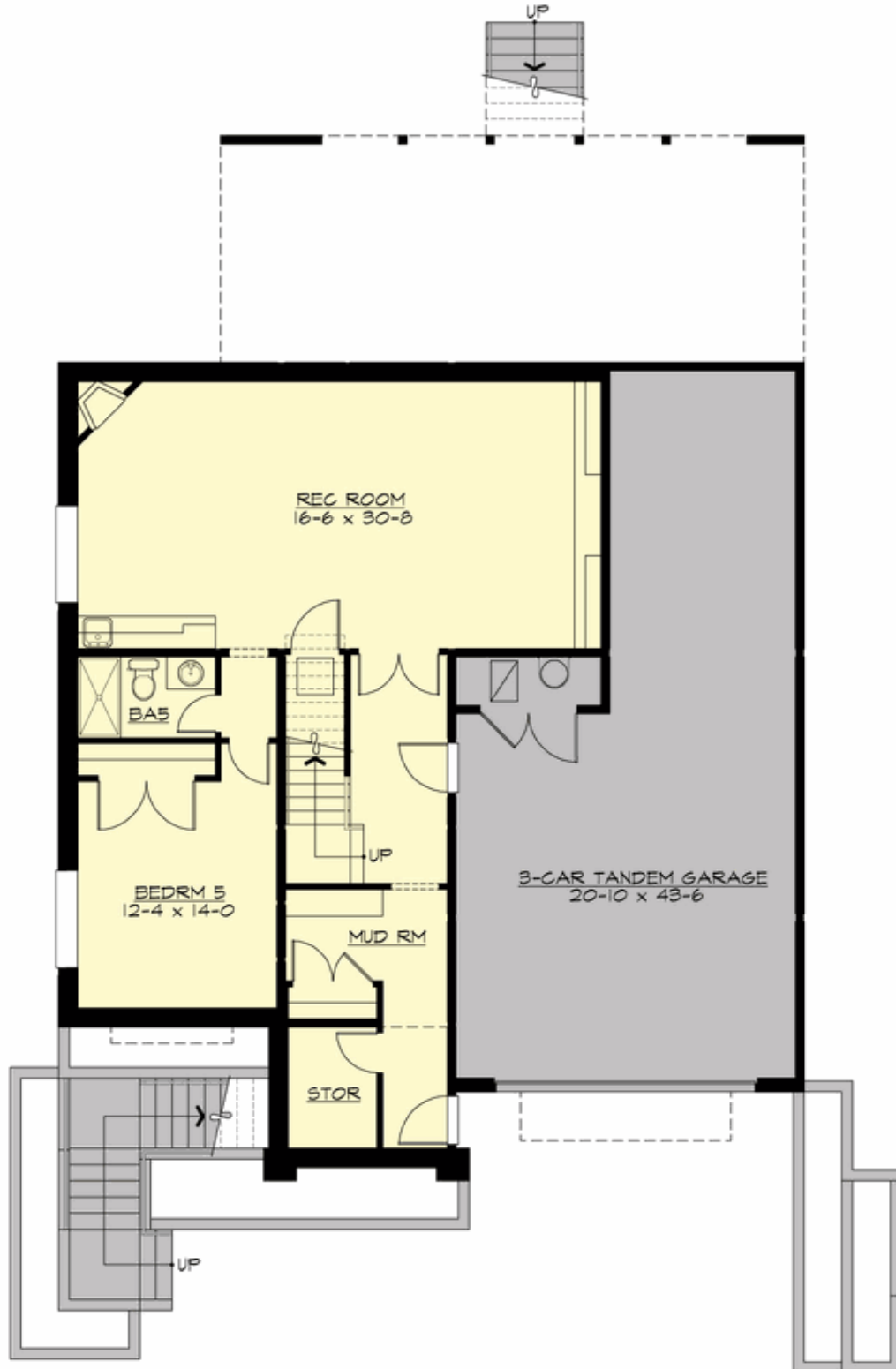
**UPPER FLOOR**





**MONTEVISTA - PLAN M5191B3FTU-1DB**

**LOWER FLOOR**





## MONTEVISTA - PLAN M5191B3FTU-1DB

### PLAN DETAILS

#### Area Summary

Total Area: 5099 sq. ft.  
Main Floor: 2021 sq. ft.  
Upper Floor: 1801 sq. ft.  
Lower Floor: 1277 sq. ft.  
Garage Floor: 795 sq. ft.

#### General Information

Stories: 3  
Width: 46'-0"  
Depth: 72'-6"  
Height: 26'-11"

#### Architectural Style

Contemporary  
Northwest  
Prairie

#### Number of Rooms

Bedrooms: 5  
Full Baths: 5  
Half Baths: 1

#### Garage

Garage Size: 3  
Garage Door Location: Front  
Garage Type: TandemUnder

#### Roof Pitches

Primary: 4:12

#### Wall Heights

Main: 10'-0"  
Upper: 9'-0"  
Lower: 9'-0"

#### Foundation Type

Daylight Basement

#### Roof Framing

Trusses

#### Floor Load

Live (lbs): 40 PSF  
Dead (lbs): 10 PSF

#### Roof Load

Live (lbs): 25 PSF  
Dead (lbs): 15 PSF  
Wind: 85 MPH

#### Design Features

- Bonus Space @ Lower Floor
- Den/Office
- Front and Rear Porch
- Great Room
- Laundry Room @ Upper Floor
- Master Bedroom @ Upper Floor Front
- Narrow Lot