

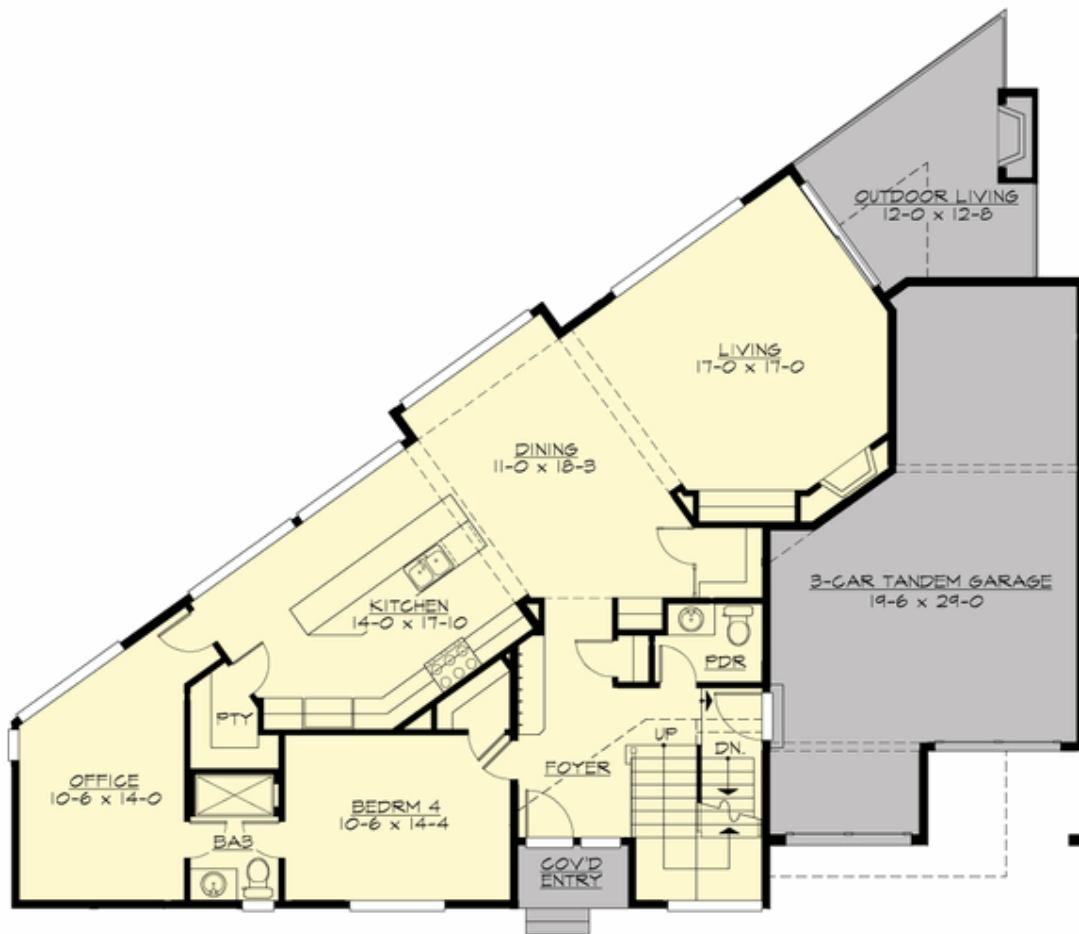
## ARIELLA - PLAN M4527A3FT-0DB

Total Area: 4527 sq. ft.  
Garage Area: 579 sq. ft.  
Garage Area: 579 sq. ft.  
Garage Size: 3  
Stories: 3  
Bedrooms: 6  
Full Baths: 4  
Half Baths: 1  
Width: 68'-2"  
Depth: 52'-0"  
Height: 27'-9"  
Foundation: Daylight Basement



## ARIELLA - PLAN M4527A3FT-0DB

### MAIN FLOOR



## ARIELLA - PLAN M4527A3FT-0DB

### UPPER FLOOR



**ARIELLA - PLAN M4527A3FT-0DB**

**LOWER FLOOR**





## ARIELLA - PLAN M4527A3FT-0DB

### PLAN DETAILS

#### Area Summary

Total Area:	4527 sq. ft.
Main Floor:	1540 sq. ft.
Upper Floor:	1506 sq. ft.
Lower Floor:	1480 sq. ft.
Garage Floor:	579 sq. ft.

#### General Information

Stories:	3
Width:	68'-2"
Depth:	52'-0"
Height:	27'-9"

#### Architectural Style

Contemporary  
Modern  
Prairie

#### Number of Rooms

Bedrooms:	6
Full Baths:	4
Half Baths:	1

#### Garage

Garage Size:	3
Garage Door Location:	Front
Garage Type:	Tandem

#### Roof Pitches

Primary:	2:12
Secondary:	0:12

#### Wall Heights

Main:	10'-0"
Upper:	9'-0"
Lower:	9'-0"

#### Foundation Type

Daylight Basement

#### Roof Framing

Stick

#### Floor Load

Live (lbs):	40 PSF
Dead (lbs):	10 PSF

#### Roof Load

Live (lbs):	25 PSF
Dead (lbs):	15 PSF
Wind:	85 MPH

#### Design Features

- Bonus Space @ Upper Floor
- Den/Office
- Front and Rear Porch
- Great Room
- Laundry Room @ Upper & Lower Floor
- Master Bedroom @ Upper Floor Rear
- New Plan
- View Lot - Rear