

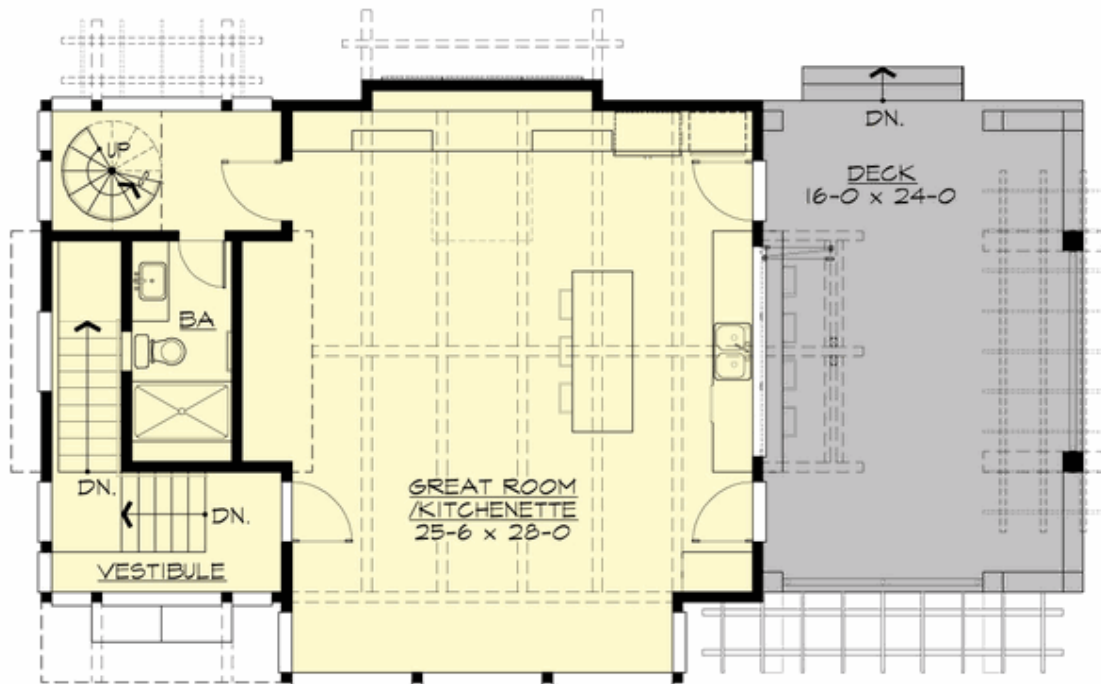
## HYANNIS LOOKOUT - PLAN A1435A3FU-0DB

Total Area: 1433 sq. ft.  
Garage Area: 1100 sq. ft.  
Garage Area: 1100 sq. ft.  
Garage Size: 3  
Stories: 3  
Full Baths: 1  
Width: 53'-6"  
Depth: 29'-0"  
Height: 27'-0"  
Foundation: Daylight Basement



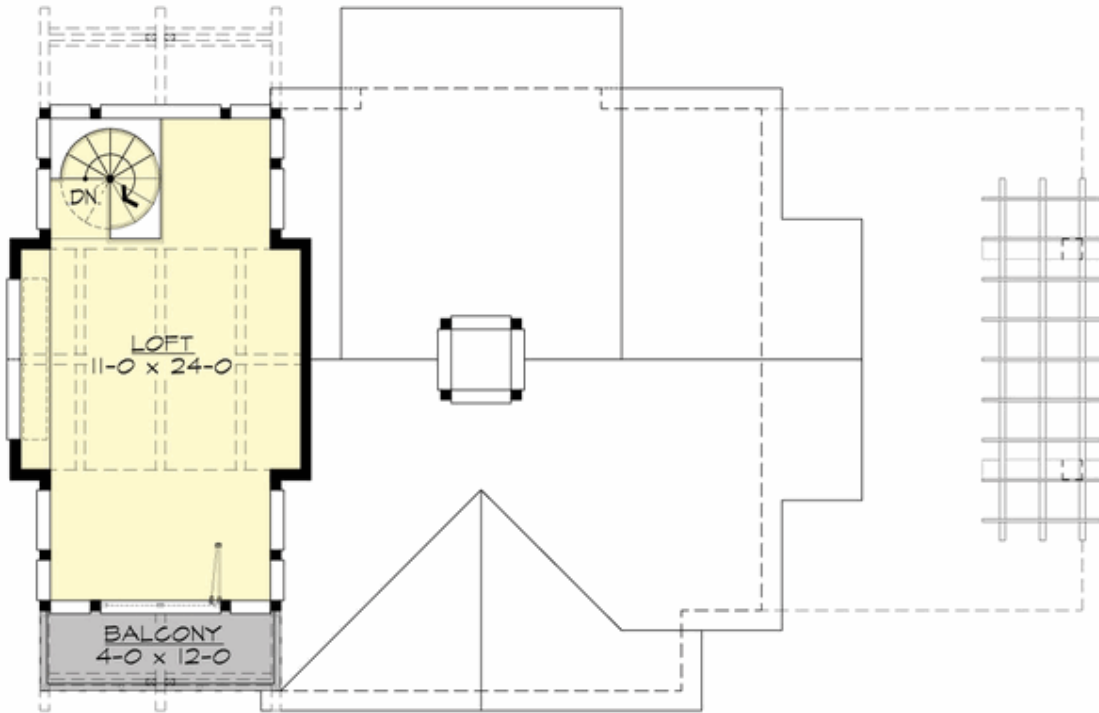
## HYANNIS LOOKOUT - PLAN A1435A3FU-0DB

### MAIN FLOOR



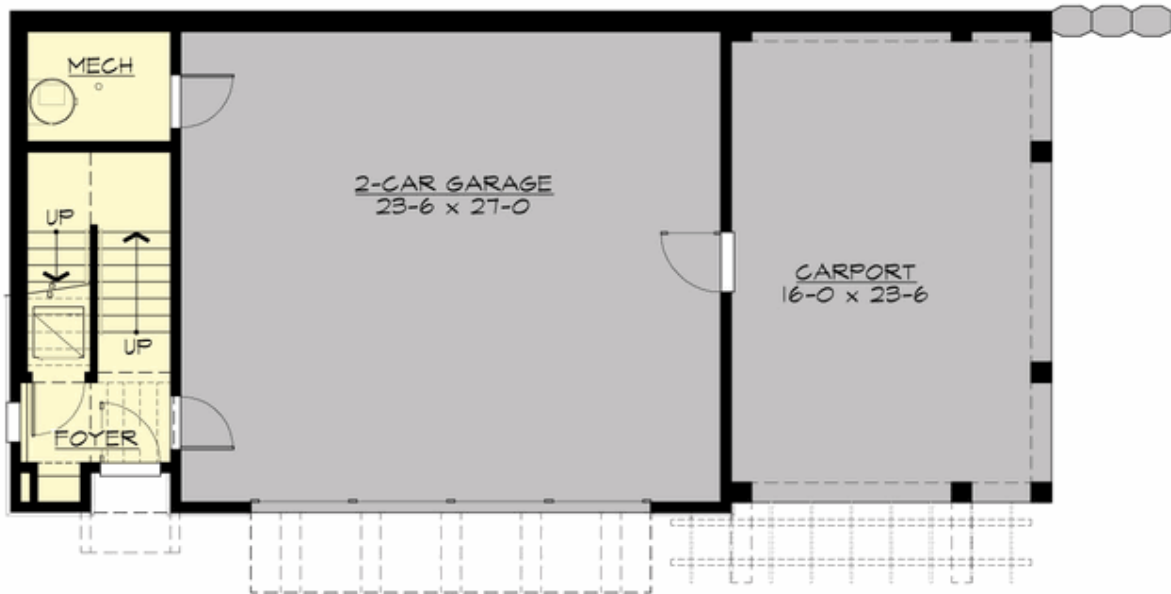
## HYANNIS LOOKOUT - PLAN A1435A3FU-0DB

### UPPER FLOOR



**HYANNIS LOOKOUT - PLAN A1435A3FU-0DB**

**LOWER FLOOR**



## HYANNIS LOOKOUT - PLAN A1435A3FU-0DB

### PLAN DETAILS

#### Area Summary

Total Area: 1433 sq. ft.  
Main Floor: 944 sq. ft.  
Upper Floor: 299 sq. ft.  
Lower Floor: 190 sq. ft.  
Garage Floor: 1100 sq. ft.

#### General Information

Stories: 3  
Width: 53'-6"  
Depth: 29'-0"  
Height: 27'-0"

#### Architectural Style

Cape Cod  
Hampton  
Shingle

#### Number of Rooms

Full Baths: 1

#### Garage

Garage Size: 3  
Garage Door Location: Front  
Garage Type: Under

#### Roof Pitches

Primary: 6:12  
Secondary: 3:12

#### Wall Heights

Main: 10'-0"  
Upper: 9'-0"  
Lower: 12'-0"

#### Foundation Type

Daylight Basement

#### Roof Framing

Trusses

#### Floor Load

Live (lbs): 40 PSF  
Dead (lbs): 10 PSF

#### Roof Load

Live (lbs): 25 PSF  
Dead (lbs): 15 PSF  
Wind: 85 MPH

#### Design Features

- Bonus Space @ Upper Floor
- Great Room
- Laundry Room @ Lower Floor
- Luxury Plan
- New Plan
- View Lot - Front