

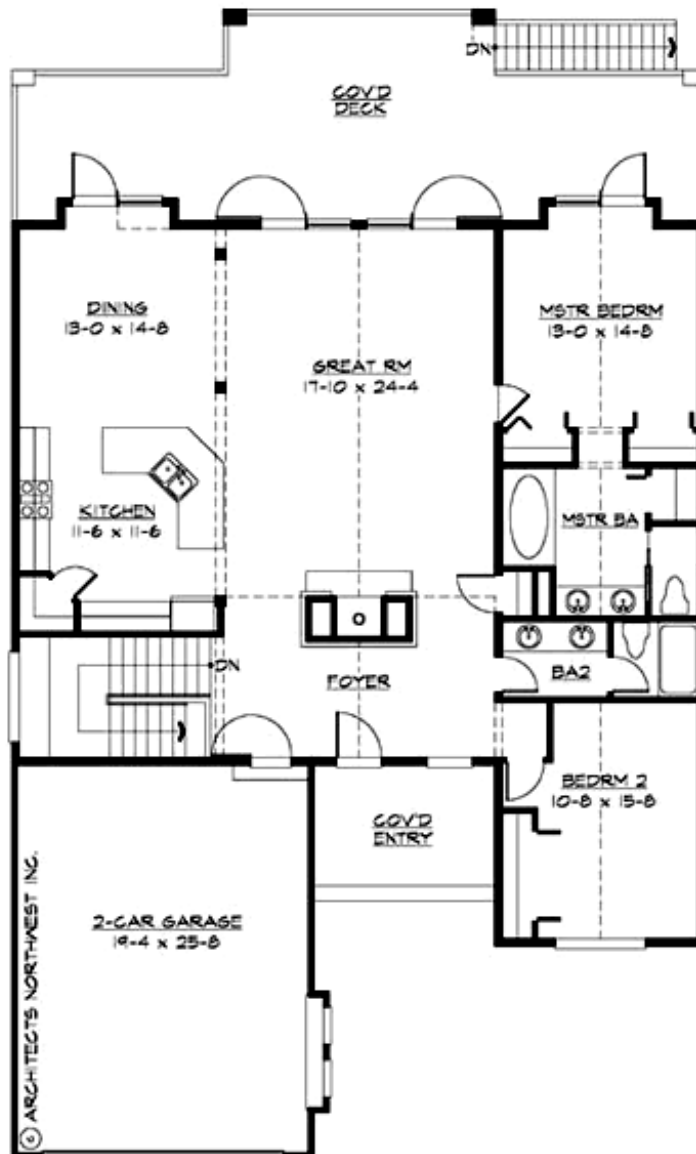
## FRASER - PLAN R3371A2F-0DB

Total Area: 3371 sq. ft.  
Garage Area: 528 sq. ft.  
Garage Area: 528 sq. ft.  
Garage Size: 2  
Stories: 2  
Bedrooms: 5  
Full Baths: 3  
Width: 46'-0"  
Depth: 76'-0"  
Height: 21'-0"  
Foundation: Daylight Basement



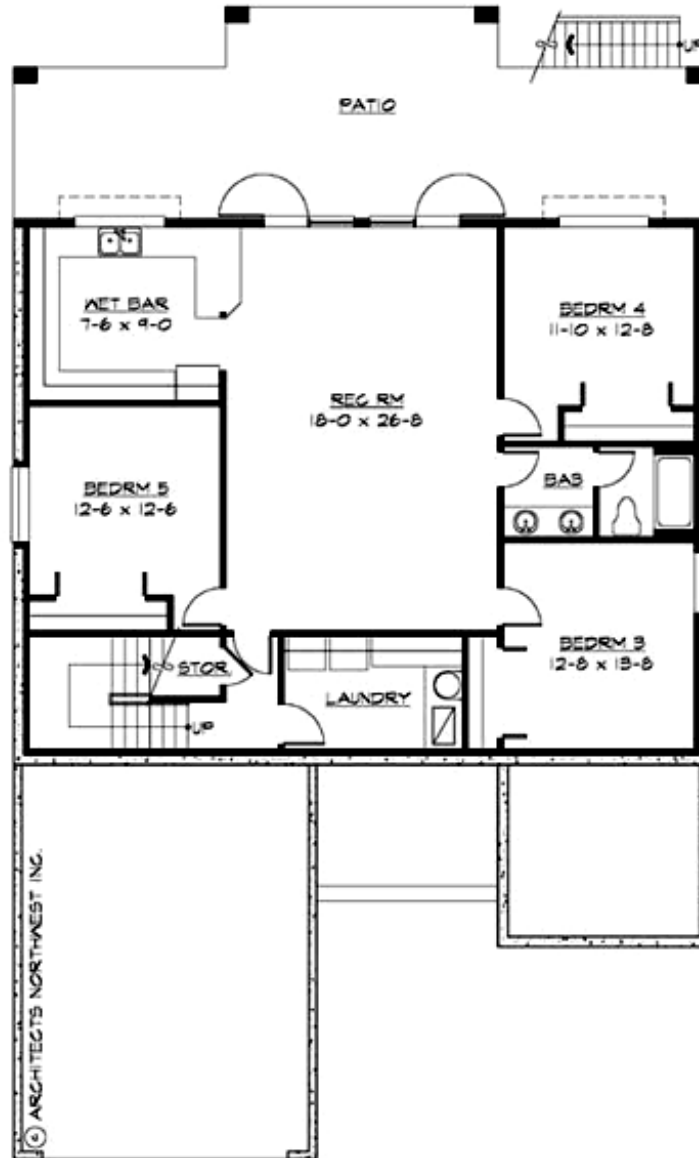
## FRASER - PLAN R3371A2F-0DB

### MAIN FLOOR



## FRASER - PLAN R3371A2F-0DB

### LOWER FLOOR





## FRASER - PLAN R3371A2F-0DB

### PLAN DETAILS

#### Area Summary

Total Area: 3371 sq. ft.  
Main Floor: 1715 sq. ft.  
Lower Floor: 1656 sq. ft.  
Garage Floor: 528 sq. ft.

#### General Information

Stories: 2  
Width: 46'-0"  
Depth: 76'-0"  
Height: 21'-0"

#### Architectural Style

Cottage  
Craftsman  
Shingle

#### Number of Rooms

Bedrooms: 5  
Full Baths: 3

#### Garage

Garage Size: 2  
Garage Door Location: Front

#### Roof Pitches

Primary: 6:12

#### Wall Heights

Main: 9'-0"  
Upper: 0'-0"  
3rd Floor: 0'-0"  
Lower: 9'-0"

#### Foundation Type

Daylight Basement

#### Roof Framing

Trusses

#### Floor Load

Live (lbs): 40 PSF  
Dead (lbs): 10 PSF

#### Roof Load

Live (lbs): 25 PSF  
Dead (lbs): 15 PSF  
Wind: 85 MPH

#### Design Features

- Bonus Space @ Lower Floor
- Great Room
- Laundry Room @ Lower Floor
- Master Bedroom @ Main Floor Rear
- Rear Porch
- Vacation Plan