

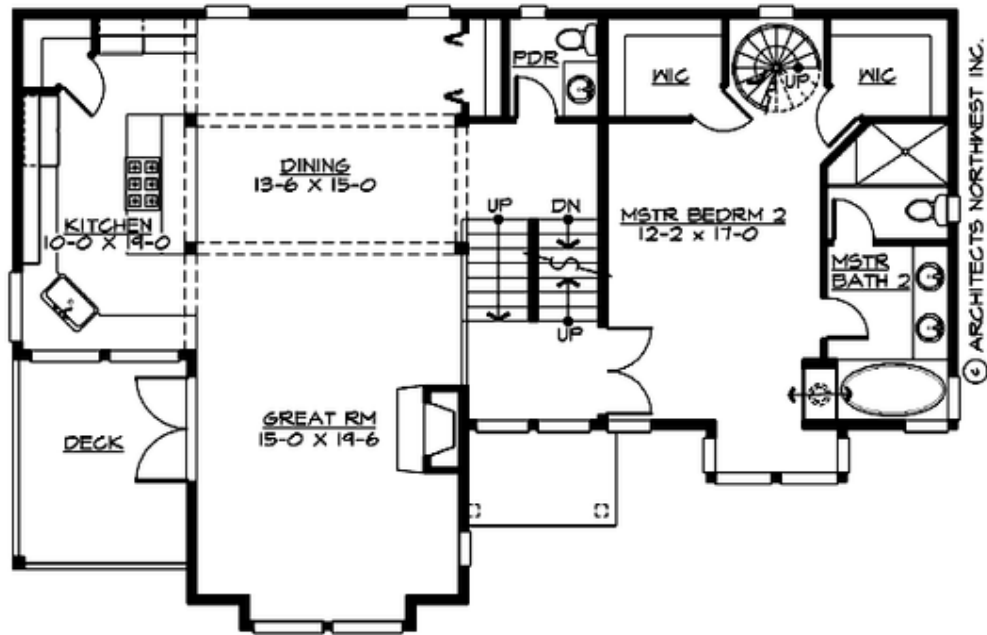
RUDOLPH - PLAN S3345A2F-0DB

Total Area: 3345 sq. ft.
Garage Area: 480 sq. ft.
Garage Area: 480 sq. ft.
Garage Size: 3
Stories: 3
Bedrooms: 3
Full Baths: 3
Half Baths: 1
Width: 54'-0"
Depth: 36'-0"
Height: 34'-6"
Foundation: Daylight Basement



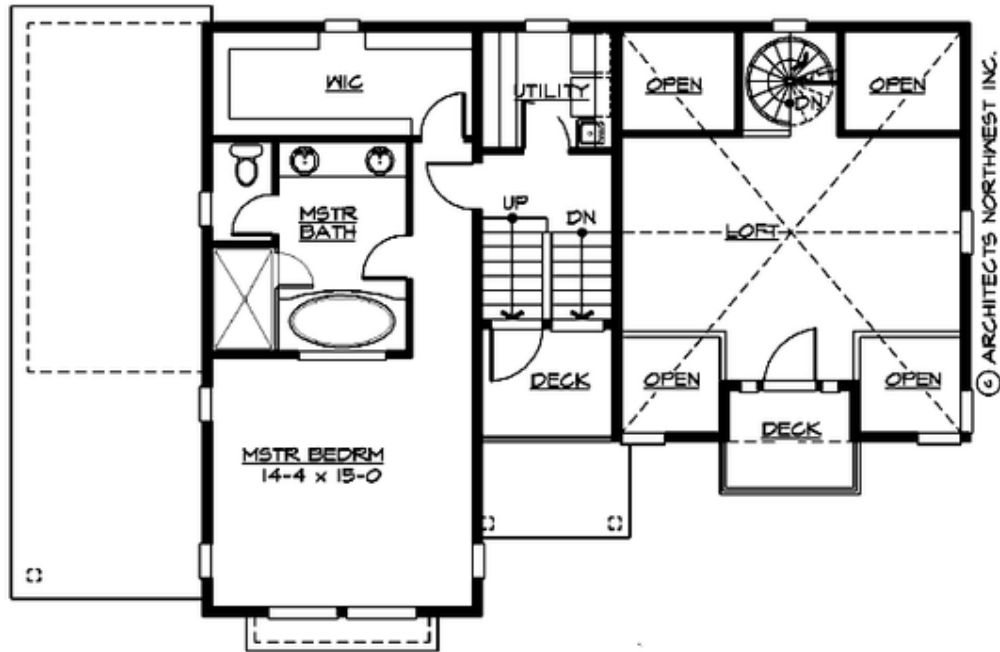
RUDOLPH - PLAN S3345A2F-0DB

MAIN FLOOR



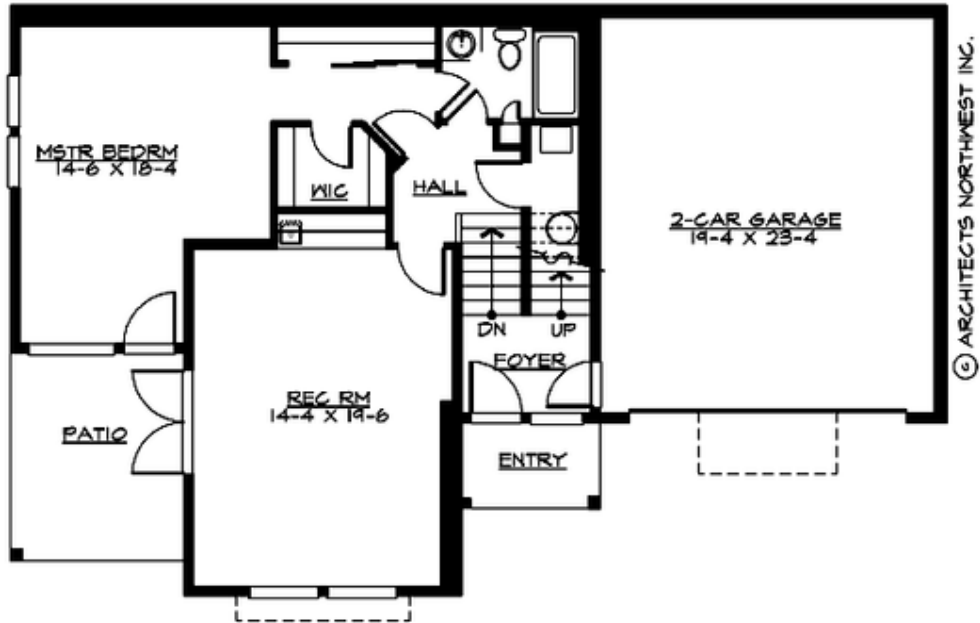
RUDOLPH - PLAN S3345A2F-0DB

UPPER FLOOR



RUDOLPH - PLAN S3345A2F-0DB

LOWER FLOOR



RUDOLPH - PLAN S3345A2F-0DB

PLAN DETAILS

Area Summary

Total Area:	3345 sq. ft.
Main Floor:	1455 sq. ft.
Upper Floor:	954 sq. ft.
Lower Floor:	936 sq. ft.
Garage Floor:	480 sq. ft.

General Information

Stories:	3
Width:	54'-0"
Depth:	36'-0"
Height:	34'-6"

Architectural Style

Craftsman
Northwest
Shingle

Number of Rooms

Bedrooms:	3
Full Baths:	3
Half Baths:	1

Garage

Garage Size:	3
Garage Door Location:	Front

Roof Pitches

Primary:	3:12
Secondary:	8:12

Wall Heights

Main:	9'-0"
Upper:	8'-0"
3rd Floor:	0'-0"
Lower:	9'-0"

Foundation Type

Daylight Basement

Roof Framing

Stick

Floor Load

Live (lbs):	40 PSF
Dead (lbs):	10 PSF

Roof Load

Live (lbs):	25 PSF
Dead (lbs):	15 PSF
Wind:	85 MPH

Design Features

- Bonus Space @ Lower Floor
- Great Room
- Laundry Room @ Upper Floor
- Master Bedroom @ Upper Floor Front
- View Lot - Front