

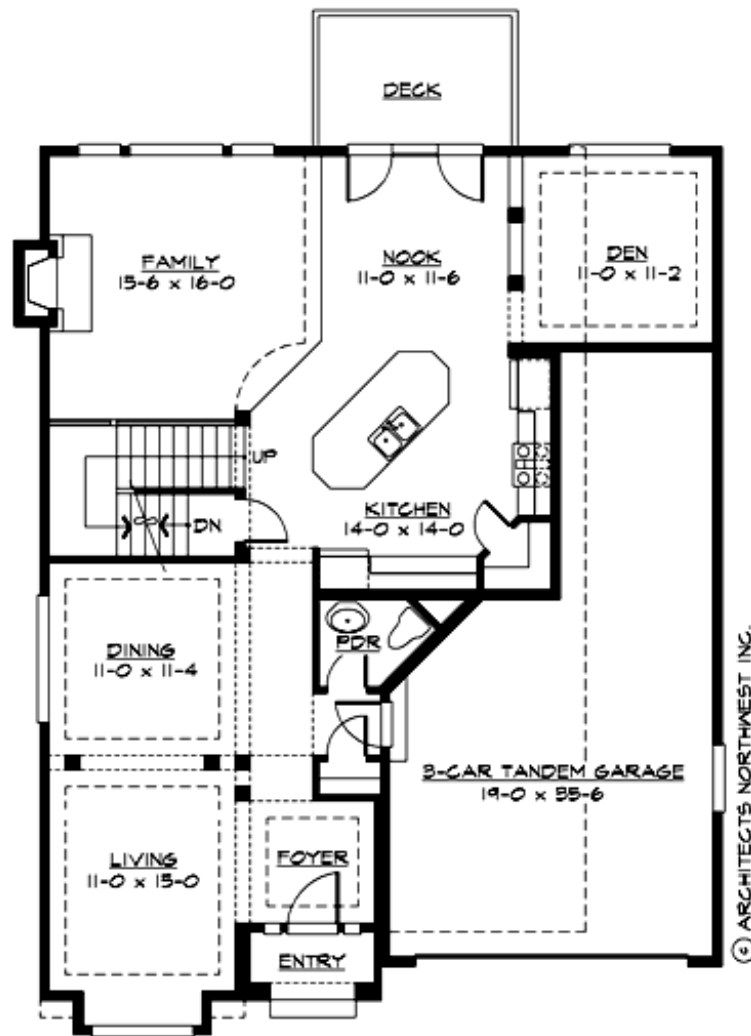
## HADLEY PARK - PLAN M2520B3FT-0DB

Total Area: 3327 sq. ft.  
Garage Area: 552 sq. ft.  
Garage Area: 552 sq. ft.  
Garage Size: 3  
Stories: 3  
Bedrooms: 4  
Full Baths: 3  
Half Baths: 1  
Width: 40'-0"  
Depth: 52'-0"  
Height: 31'-0"  
Foundation: Daylight Basement



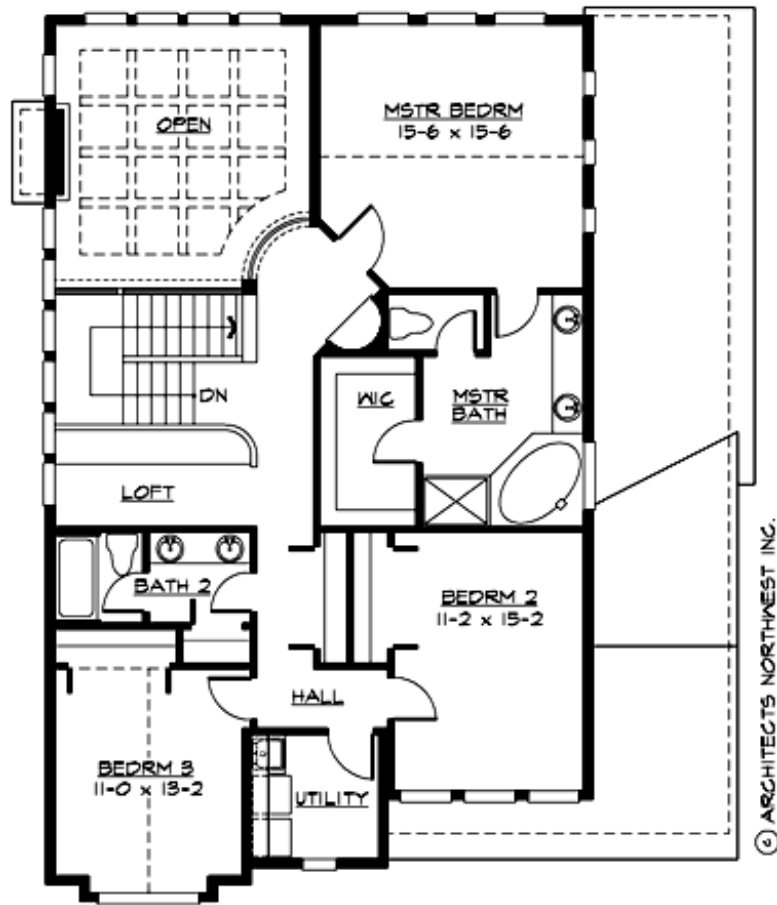
## HADLEY PARK - PLAN M2520B3FT-0DB

### MAIN FLOOR



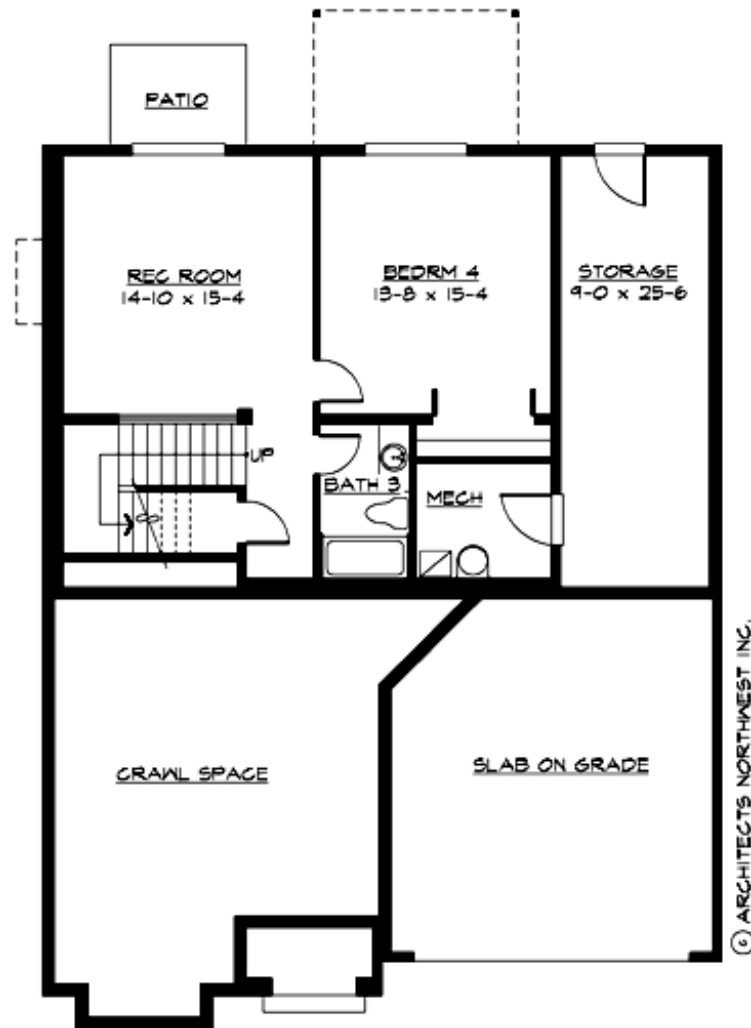
## HADLEY PARK - PLAN M2520B3FT-0DB

### UPPER FLOOR



## HADLEY PARK - PLAN M2520B3FT-0DB

### LOWER FLOOR





## HADLEY PARK - PLAN M2520B3FT-0DB

### PLAN DETAILS

#### Area Summary

Total Area: 3327 sq. ft.  
Main Floor: 1380 sq. ft.  
Upper Floor: 1252 sq. ft.  
Lower Floor: 695 sq. ft.  
Garage Floor: 552 sq. ft.

#### General Information

Stories: 3  
Width: 40'-0"  
Depth: 52'-0"  
Height: 31'-0"

#### Architectural Style

Craftsman  
European  
Tudor

#### Number of Rooms

Bedrooms: 4  
Full Baths: 3  
Half Baths: 1

#### Garage

Garage Size: 3  
Garage Door Location: Front  
Garage Type: Tandem

#### Roof Pitches

Primary: 8:12  
Secondary: 12:12

#### Wall Heights

Main: 9'-0"  
Upper: 8'-0"  
3rd Floor: 0'-0"  
Lower: 9'-0"

#### Foundation Type

Daylight Basement

#### Roof Framing

Trusses

#### Floor Load

Live (lbs): 40 PSF  
Dead (lbs): 10 PSF

#### Roof Load

Live (lbs): 25 PSF  
Dead (lbs): 15 PSF  
Wind: 85 MPH

#### Design Features

- Bonus Space @ Lower Floor
- Den/Office
- Laundry Room @ Upper Floor
- Living & Family Room
- Master Bedroom @ Upper Floor Rear
- Narrow Lot