

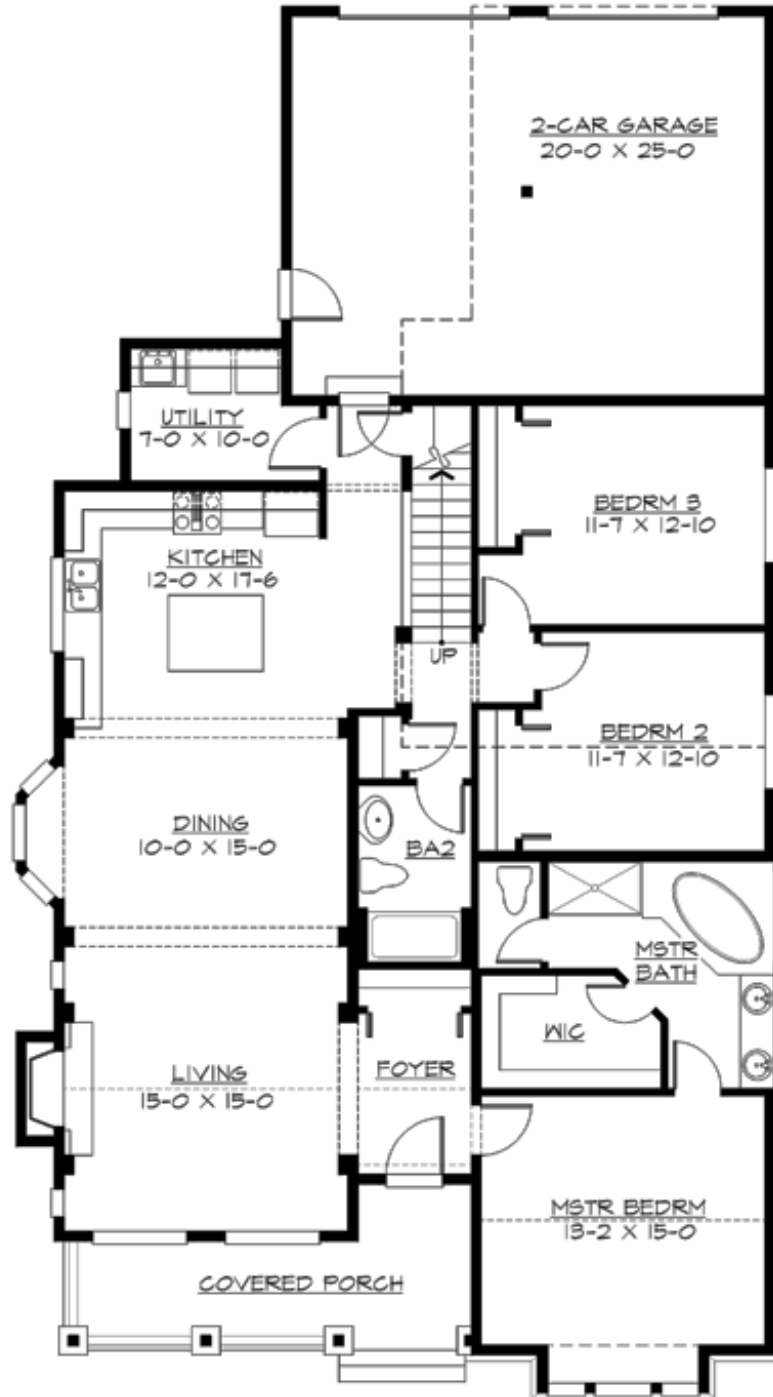
## BUNGALOW BAY - PLAN M2570A2R-4

Total Area: 2464 sq. ft.  
Garage Area: 532 sq. ft.  
Garage Area: 532 sq. ft.  
Garage Size: 2  
Stories: 2  
Bedrooms: 3  
Full Baths: 2  
Width: 40'-0"  
Depth: 73'-0"  
Height: 25'-0"  
Foundation: Crawl Space



## BUNGALOW BAY - PLAN M2570A2R-4

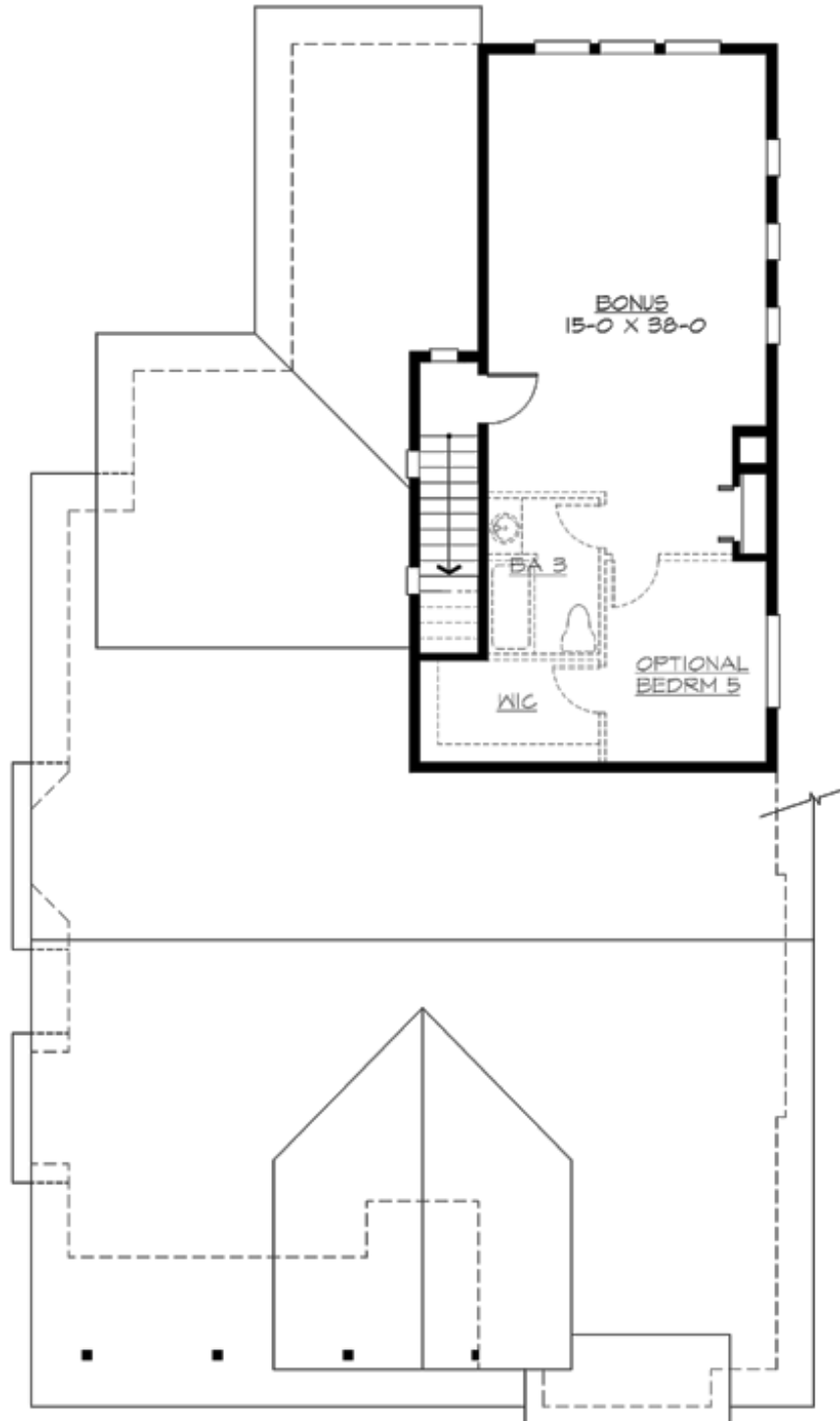
### MAIN FLOOR





## BUNGALOW BAY - PLAN M2570A2R-4

### UPPER FLOOR





## BUNGALOW BAY - PLAN M2570A2R-4

### PLAN DETAILS

#### Area Summary

Total Area: 2464 sq. ft.  
Main Floor: 1817 sq. ft.  
Upper Floor: 647 sq. ft.  
Garage Floor: 532 sq. ft.

#### General Information

Stories: 2  
Width: 40'-0"  
Depth: 73'-0"  
Height: 25'-0"

#### Architectural Style

Bungalow  
Cottage  
Farmhouse

#### Number of Rooms

Bedrooms: 3  
Full Baths: 2

#### Garage

Garage Size: 2  
Garage Door Location: Rear

#### Roof Pitches

Primary: 8:12  
Secondary: 4:12

#### Wall Heights

Main: 9'-0"  
Upper: 8'-0"  
3rd Floor: 0'-0"  
Lower: 0'-0"

#### Foundation Type

Crawl Space

#### Roof Framing

Trusses

#### Floor Load

Live (lbs): 40 PSF  
Dead (lbs): 10 PSF

#### Roof Load

Live (lbs): 25 PSF  
Dead (lbs): 15 PSF  
Wind: 85 MPH

#### Design Features

- Bonus Space @ Upper Floor
- Front Porch
- Green Plan
- Laundry Room @ Main Floor
- Living & Family Room
- Master Bedroom @ Main Floor Front
- Narrow Lot