

## UNIONTOWN - PLAN M2098A1F-0FB

Total Area: 2833 sq. ft.  
Garage Area: 232 sq. ft.  
Garage Area: 232 sq. ft.  
Garage Size: 1  
Stories: 3  
Bedrooms: 3  
Full Baths: 3  
Width: 35'-0"  
Depth: 36'-6"  
Height: 25'-0"  
Foundation: Cellar Basement



## UNIONTOWN - PLAN M2098A1F-0FB

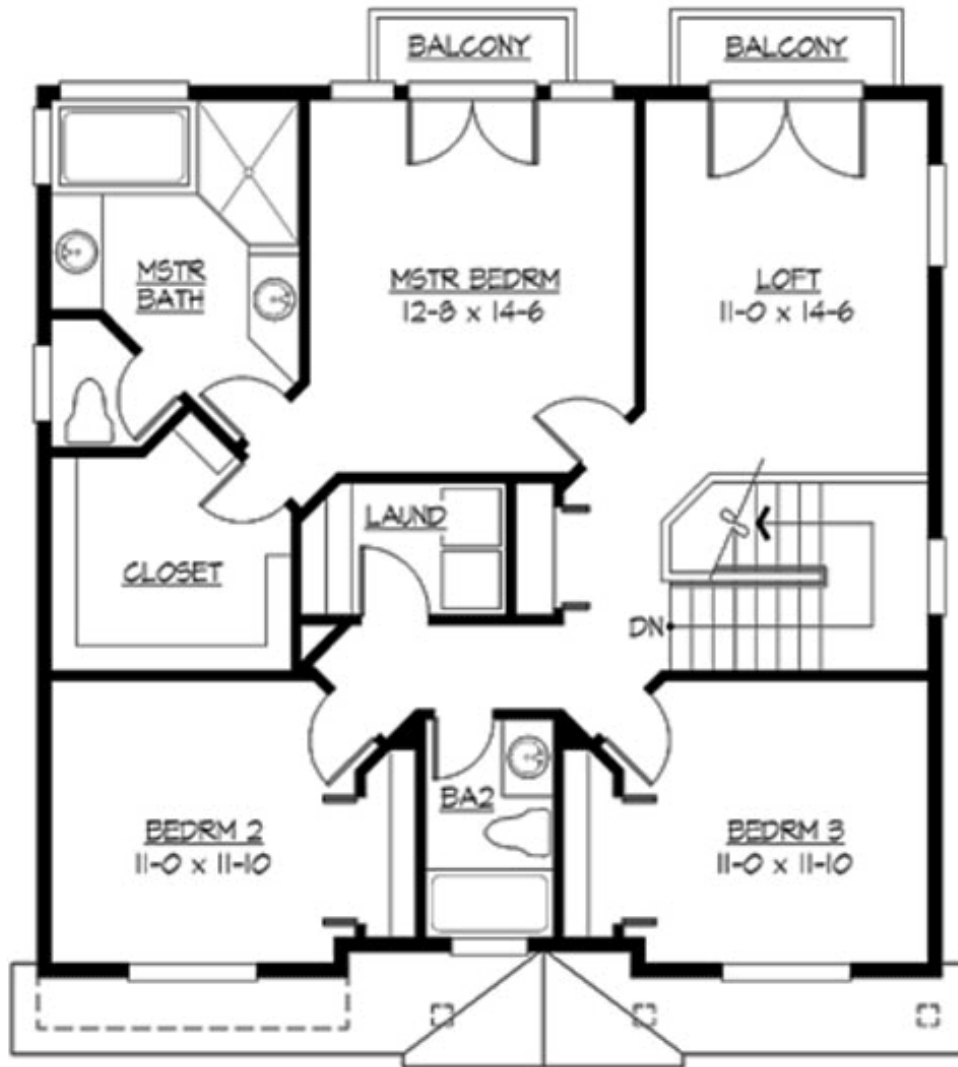
### MAIN FLOOR





## UNIONTOWN - PLAN M2098A1F-0FB

### UPPER FLOOR



© 2012 Architects Northwest, Inc.



**UNIONTOWN - PLAN M2098A1F-0FB**

**LOWER FLOOR**



## UNIONTOWN - PLAN M2098A1F-0FB

### PLAN DETAILS

#### Area Summary

Total Area:	2833 sq. ft.
Main Floor:	977 sq. ft.
Upper Floor:	1121 sq. ft.
Lower Floor:	735 sq. ft.
Garage Floor:	232 sq. ft.

#### General Information

Stories:	3
Width:	35'-0"
Depth:	36'-6"
Height:	25'-0"

#### Architectural Style

Craftsman  
Northwest  
Shingle

#### Number of Rooms

Bedrooms:	3
Full Baths:	3

#### Garage

Garage Size:	1
Garage Door Location:	Front

#### Roof Pitches

Primary:	4:12
Secondary:	6:12

#### Wall Heights

Main:	10'-0"
Upper:	8'-0"
3rd Floor:	0'-0"
Lower:	8'-0"

#### Foundation Type

Cellar Basement

#### Roof Framing

Trusses

#### Floor Load

Live (lbs):	40 PSF
Dead (lbs):	10 PSF

#### Roof Load

Live (lbs):	25 PSF
Dead (lbs):	15 PSF
Wind:	85 MPH

#### Design Features

- Bonus Space @ Upper Floor & Lower Floor
- Den/Office
- Great Room
- Laundry Room @ Upper Floor
- Master Bedroom @ Upper Floor Rear
- Narrow Lot
- Small Plan