

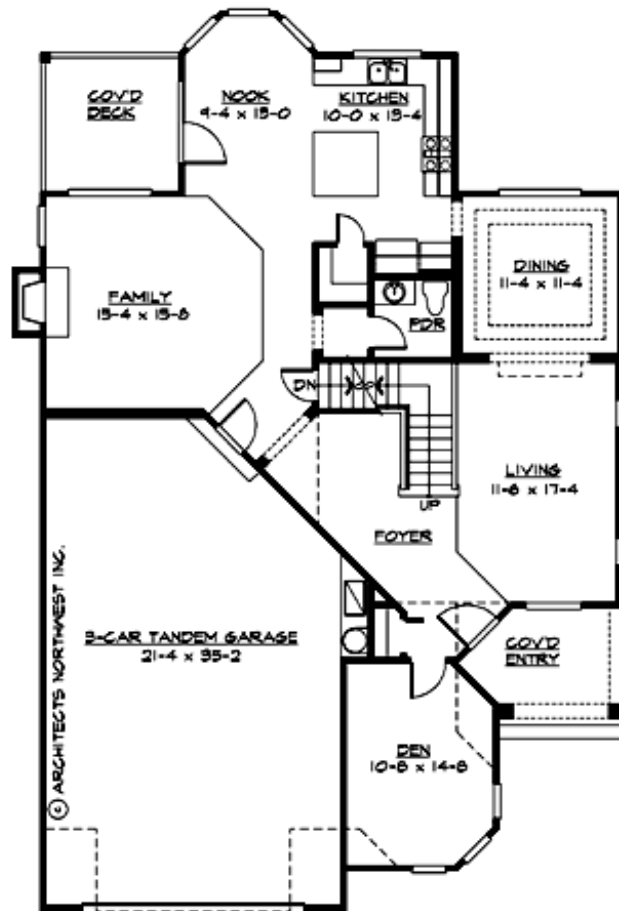
ASPEN MEADOW PARK - PLAN M2780A3FT-13DB

Total Area: 4369 sq. ft.
Garage Area: 744 sq. ft.
Garage Area: 744 sq. ft.
Garage Size: 3
Stories: 3
Bedrooms: 3
Full Baths: 3
Half Baths: 1
Width: 42'-0"
Depth: 65'-0"
Height: 28'-6"
Foundation: Daylight Basement



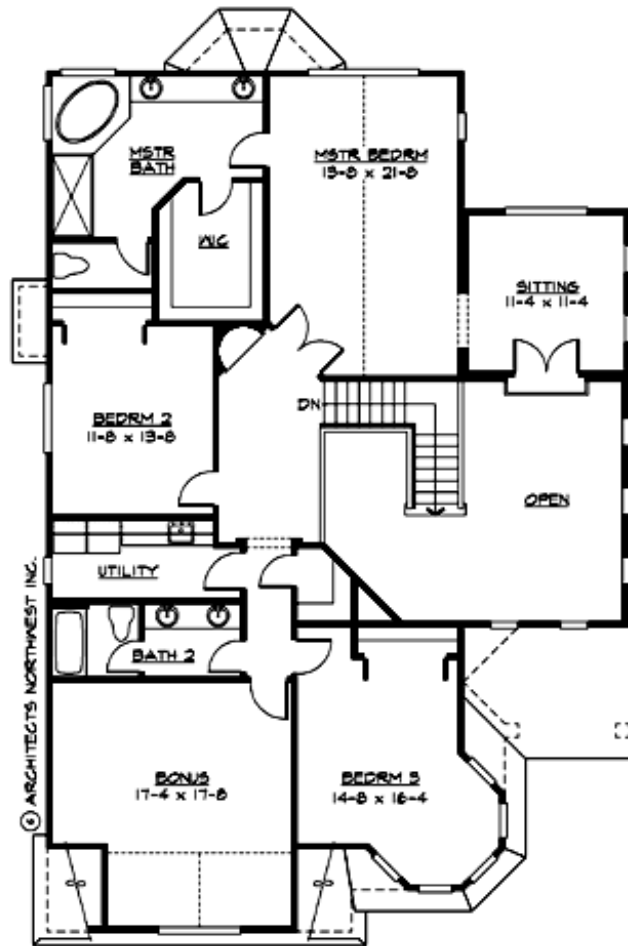
ASPEN MEADOW PARK - PLAN M2780A3FT-13DB

MAIN FLOOR



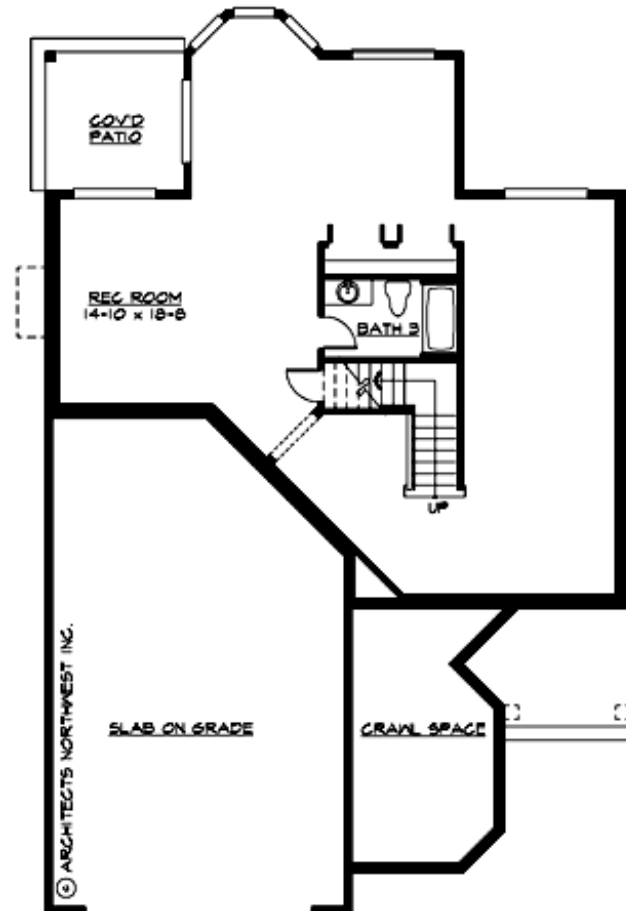
ASPEN MEADOW PARK - PLAN M2780A3FT-13DB

UPPER FLOOR



ASPEN MEADOW PARK - PLAN M2780A3FT-13DB

LOWER FLOOR





ASPEN MEADOW PARK - PLAN M2780A3FT-13DB

PLAN DETAILS

Area Summary

Total Area: 4369 sq. ft.
Main Floor: 1416 sq. ft.
Upper Floor: 1786 sq. ft.
Lower Floor: 1167 sq. ft.
Garage Floor: 744 sq. ft.

General Information

Stories: 3
Width: 42'-0"
Depth: 65'-0"
Height: 28'-6"

Architectural Style

Cape Cod
Hampton
Shingle

Number of Rooms

Bedrooms: 3
Full Baths: 3
Half Baths: 1

Garage

Garage Size: 3
Garage Door Location: Front
Garage Type: Tandem

Roof Pitches

Primary: 8:12
Secondary: 4:12

Wall Heights

Main: 9'-0"
Upper: 8'-0"
3rd Floor: 0'-0"
Lower: 9'-0"

Foundation Type

Daylight Basement

Roof Framing

Trusses

Floor Load

Live (lbs): 40 PSF
Dead (lbs): 10 PSF

Roof Load

Live (lbs): 25 PSF
Dead (lbs): 15 PSF
Wind: 85 MPH

Design Features

- Bonus Space @ Upper Floor & Lower Floor
- Laundry Room @ Upper Floor
- Living & Family Room
- Master Bedroom @ Upper Floor Rear
- Narrow Lot
- Rear Porch