

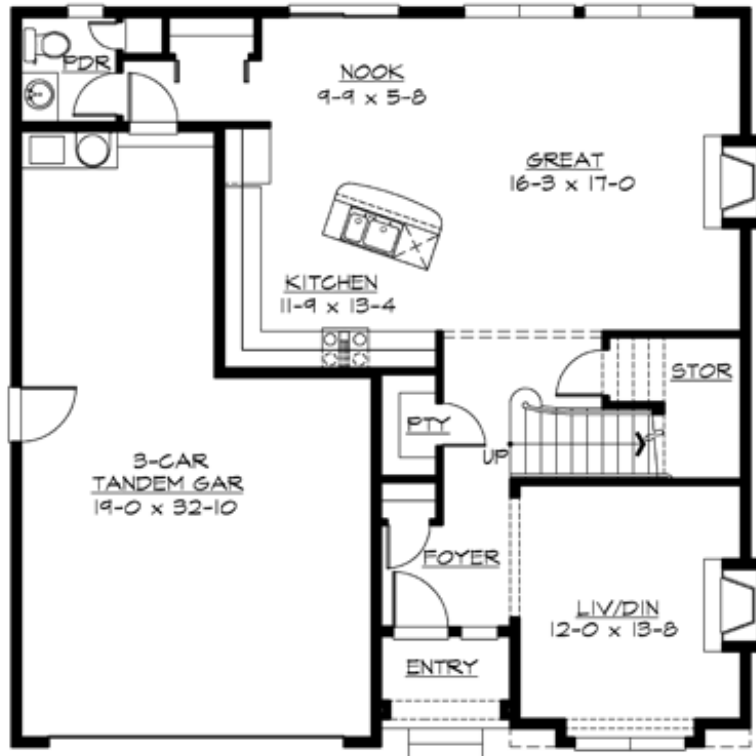
## ASHTON - PLAN M3052B3FT-0

Total Area: 3052 sq. ft.  
Garage Area: 547 sq. ft.  
Garage Area: 547 sq. ft.  
Garage Size: 3  
Stories: 3  
Bedrooms: 5  
Full Baths: 3  
Half Baths: 1  
Width: 41'-0"  
Depth: 40'-0"  
Height: 32'-0"  
Foundation: Crawl Space



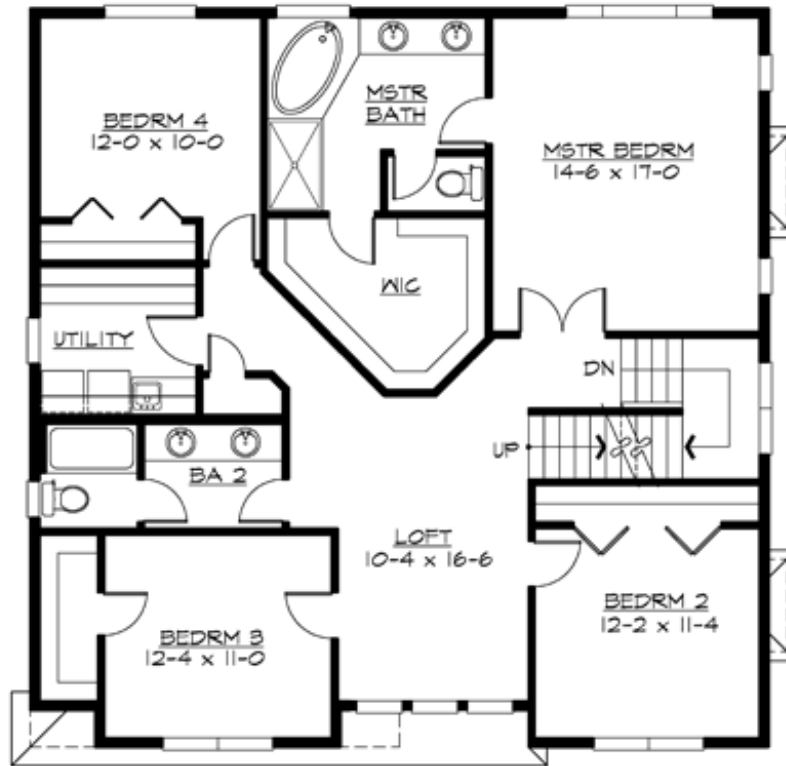
## ASHTON - PLAN M3052B3FT-0

### MAIN FLOOR



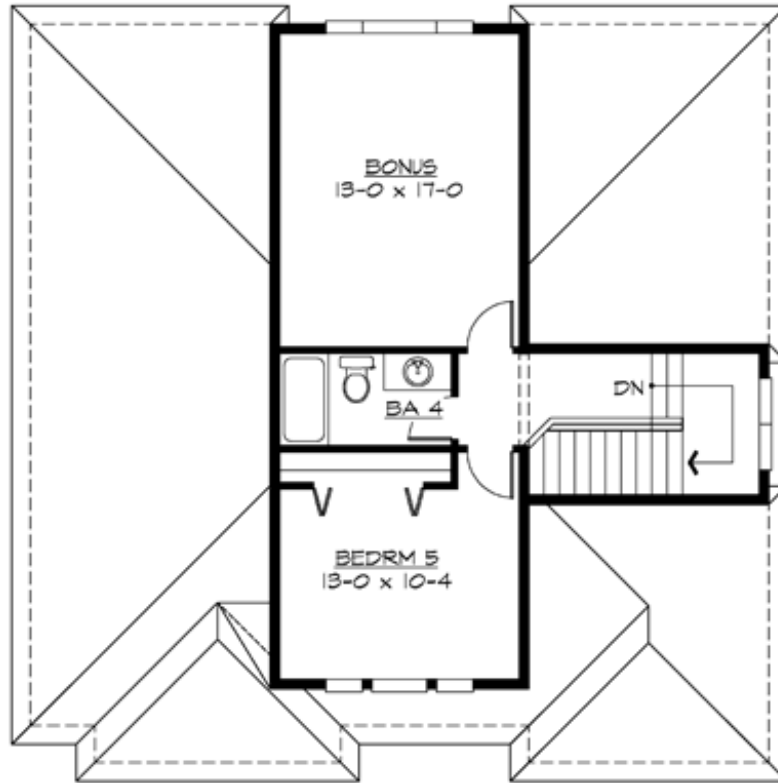
## ASHTON - PLAN M3052B3FT-0

### UPPER FLOOR



**ASHTON - PLAN M3052B3FT-0**

**THIRD FLOOR**





## ASHTON - PLAN M3052B3FT-0

### PLAN DETAILS

#### Area Summary

Total Area:	3052 sq. ft.
Main Floor:	1016 sq. ft.
Upper Floor:	1495 sq. ft.
3rd Floor:	541 sq. ft.
Garage Floor:	547 sq. ft.

#### General Information

Stories:	3
Width:	41'-0"
Depth:	40'-0"
Height:	32'-0"

#### Architectural Style

Northwest  
Shingle  
Traditional

#### Number of Rooms

Bedrooms:	5
Full Baths:	3
Half Baths:	1

#### Garage

Garage Size:	3
Garage Door Location:	Front
Garage Type:	Tandem

#### Roof Pitches

Primary:	8:12
----------	------

#### Wall Heights

Main:	9'-0"
Upper:	8'-0"
3rd Floor:	7'-0"
Lower:	0'-0"

#### Foundation Type

Crawl Space

#### Roof Framing

Trusses

#### Floor Load

Live (lbs):	40 PSF
Dead (lbs):	10 PSF

#### Roof Load

Live (lbs):	25 PSF
Dead (lbs):	15 PSF
Wind:	85 MPH

#### Design Features

- Bonus Space @ Upper Floor
- Great Room
- Green Plan
- Laundry Room @ Upper Floor
- Master Bedroom @ Upper Floor Rear
- Narrow Lot
- View Lot - Rear