

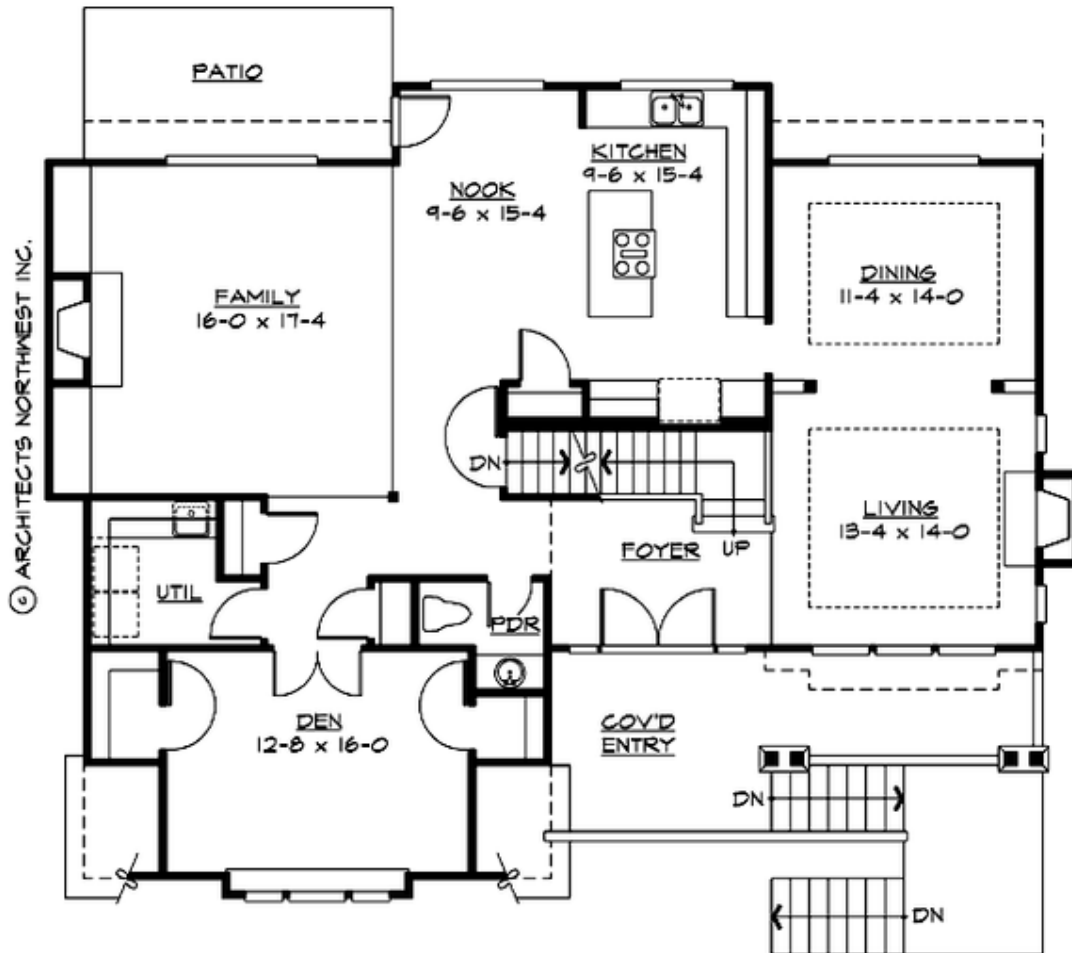
## PINE WOODS - PLAN M3155A4FTU-0

Total Area: 3305 sq. ft.  
Garage Area: 865 sq. ft.  
Garage Area: 865 sq. ft.  
Garage Size: 4  
Stories: 3  
Bedrooms: 4  
Full Baths: 3  
Half Baths: 1  
Width: 53'-0"  
Depth: 43'-0"  
Height: 28'-0"  
Foundation: Crawl Space



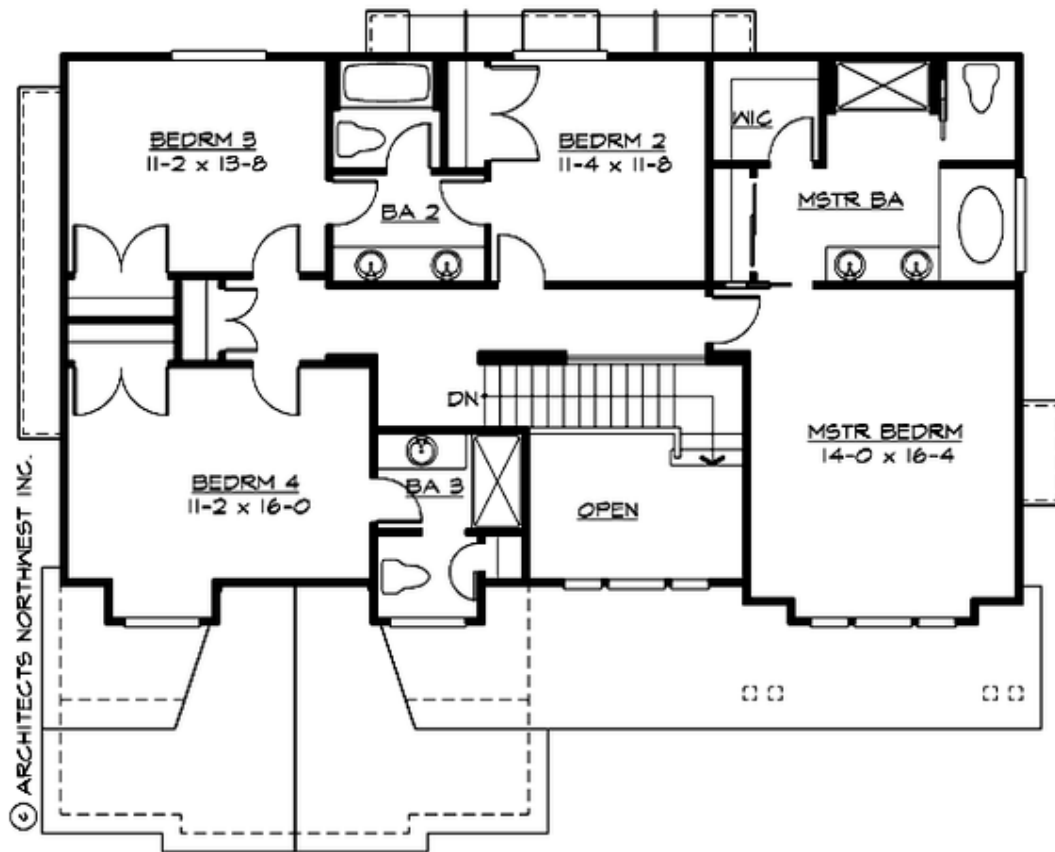
## PINE WOODS - PLAN M3155A4FTU-0

### MAIN FLOOR



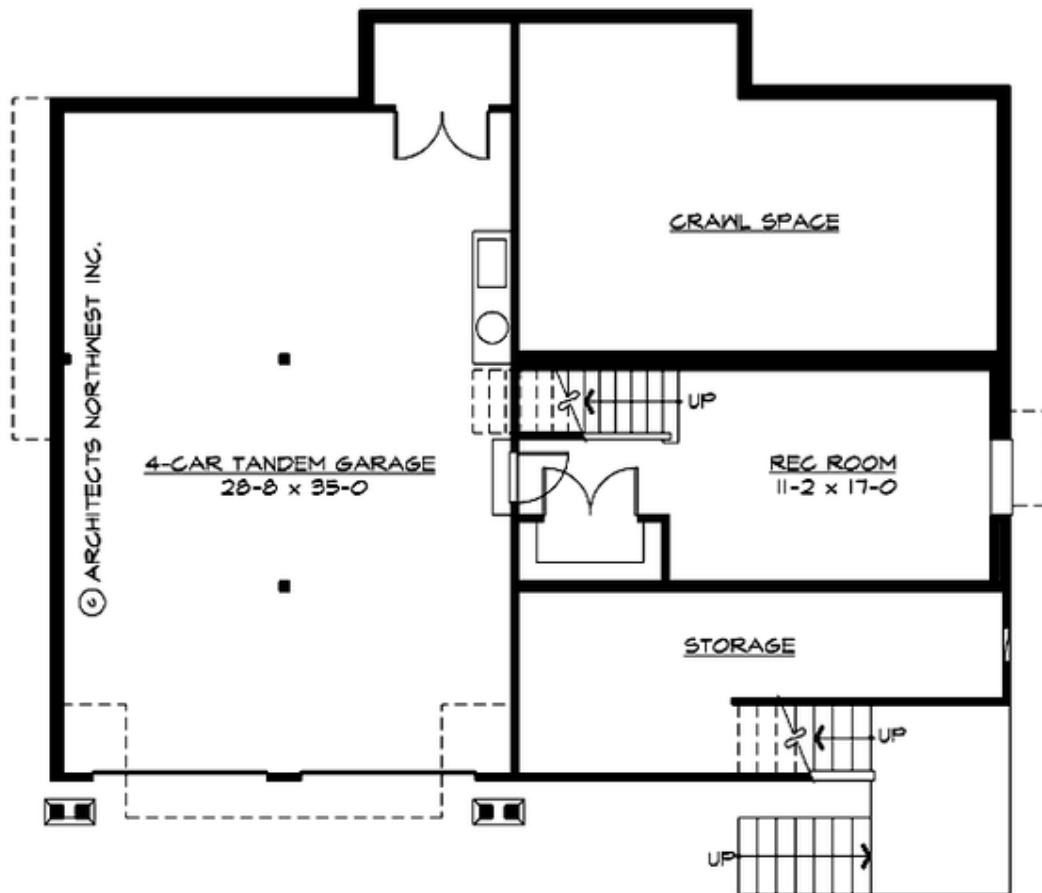
**PINE WOODS - PLAN M3155A4FTU-0**

**UPPER FLOOR**



## PINE WOODS - PLAN M3155A4FTU-0

### LOWER FLOOR





## PINE WOODS - PLAN M3155A4FTU-0

### PLAN DETAILS

#### Area Summary

Total Area:	3305 sq. ft.
Main Floor:	1667 sq. ft.
Upper Floor:	1326 sq. ft.
Lower Floor:	312 sq. ft.
Garage Floor:	865 sq. ft.

#### General Information

Stories:	3
Width:	53'-0"
Depth:	43'-0"
Height:	28'-0"

#### Architectural Style

Craftsman  
Farmhouse  
Northwest

#### Number of Rooms

Bedrooms:	4
Full Baths:	3
Half Baths:	1

#### Garage

Garage Size:	4
Garage Door Location:	Front
Garage Type:	TandemUnder

#### Roof Pitches

Primary:	8:12
Secondary:	12:12

#### Wall Heights

Main:	9'-0"
Upper:	8'-0"
3rd Floor:	0'-0"
Lower:	8'-0"

#### Foundation Type

Crawl Space

#### Roof Framing

Trusses

#### Floor Load

Live (lbs):	40 PSF
Dead (lbs):	10 PSF

#### Roof Load

Live (lbs):	25 PSF
Dead (lbs):	15 PSF
Wind:	85 MPH

#### Design Features

- Bonus Space @ Lower Floor
- Den/Office
- Front Porch
- Laundry Room @ Main Floor
- Living & Family Room
- Master Bedroom @ Upper Floor Front