

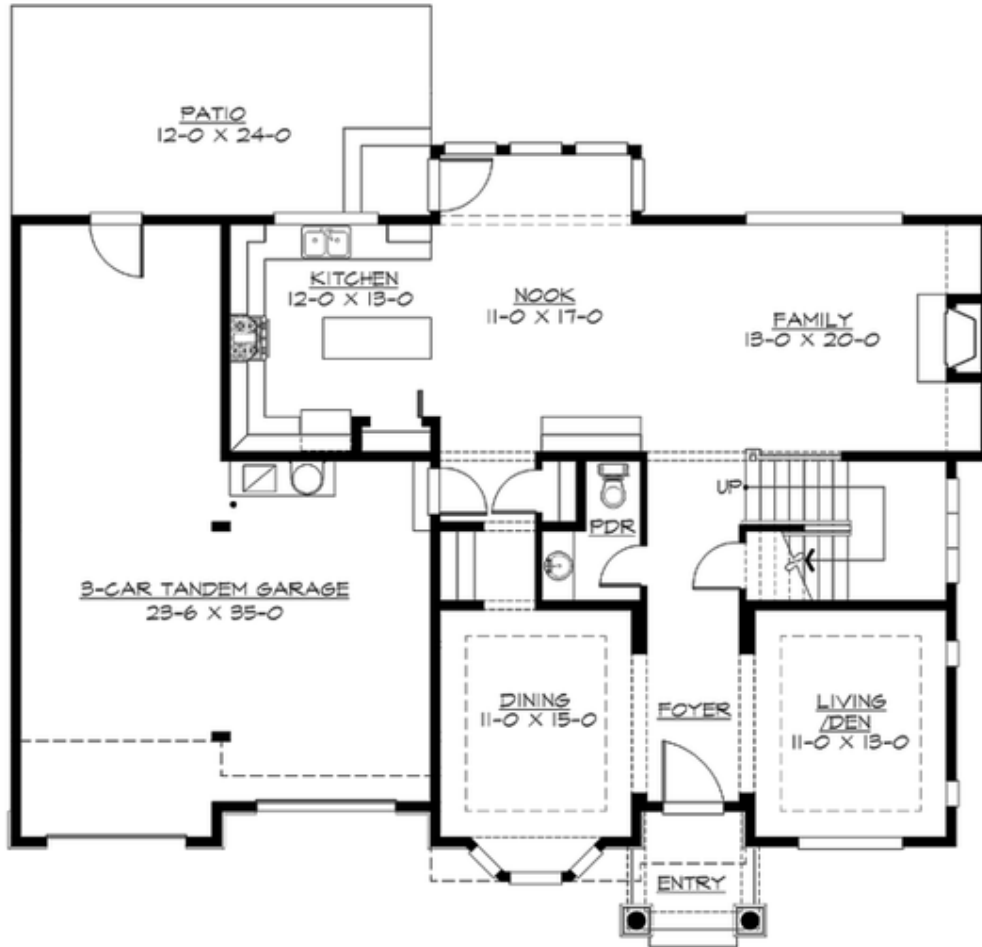
## CROWS CREST - PLAN M3440A3FT-5

Total Area: 3770 sq. ft.  
Garage Area: 670 sq. ft.  
Garage Area: 670 sq. ft.  
Garage Size: 3  
Stories: 3  
Bedrooms: 5  
Full Baths: 3  
Half Baths: 1  
Width: 54'-0"  
Depth: 44'-0"  
Height: 33'-6"  
Foundation: Crawl Space



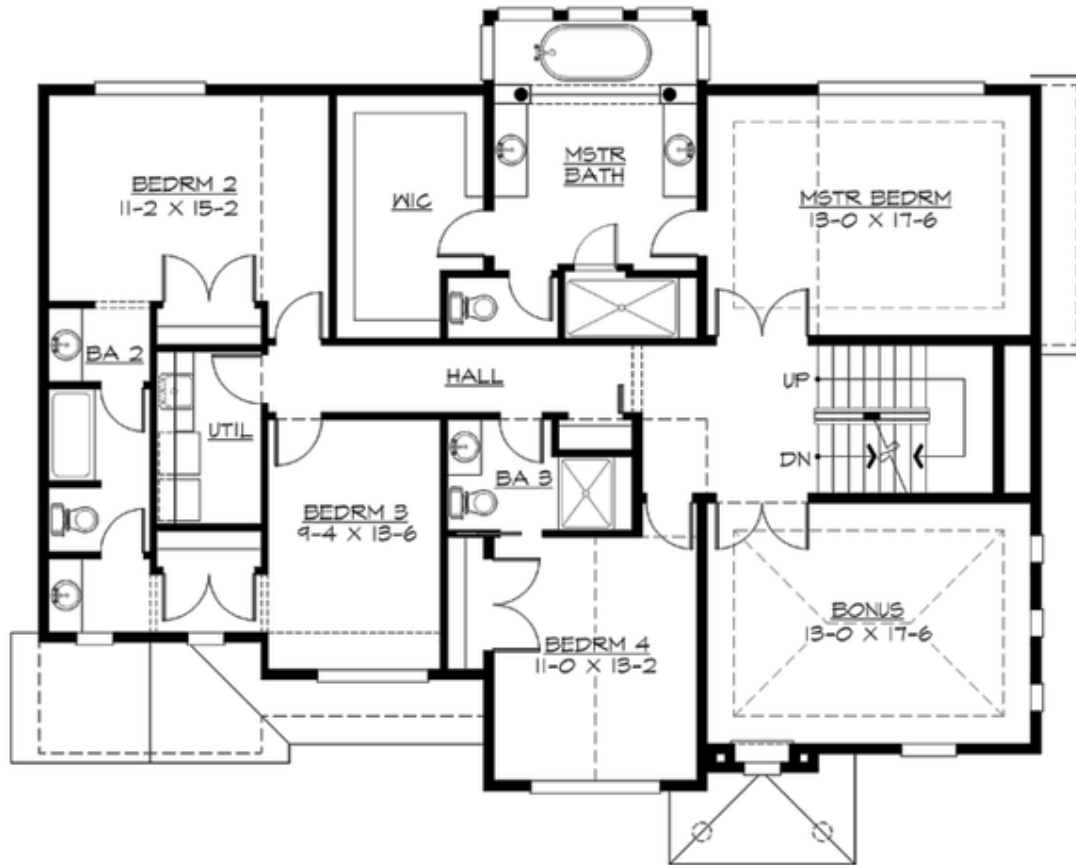
## CROWS CREST - PLAN M3440A3FT-5

### MAIN FLOOR



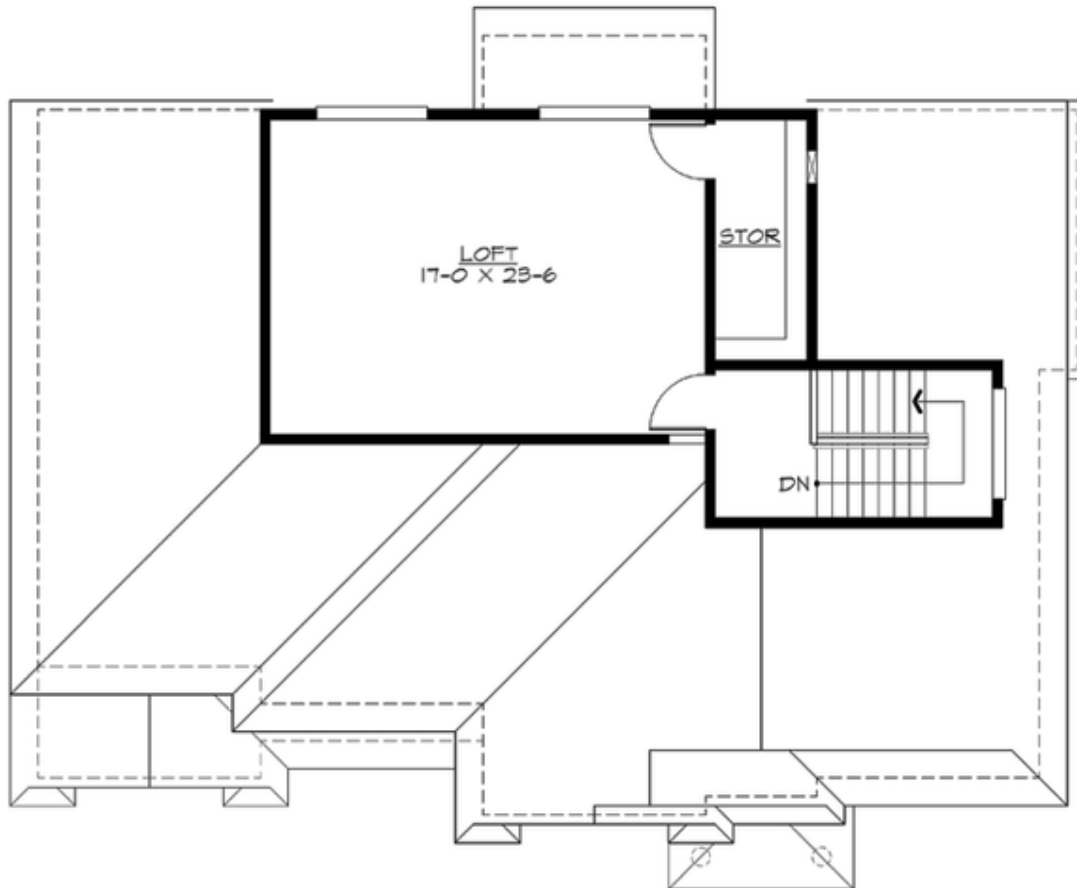
## CROWS CREST - PLAN M3440A3FT-5

### UPPER FLOOR



**CROWS CREST - PLAN M3440A3FT-5**

**THIRD FLOOR**





## CROWS CREST - PLAN M3440A3FT-5

### PLAN DETAILS

#### Area Summary

Total Area:	3770 sq. ft.
Main Floor:	1313 sq. ft.
Upper Floor:	1800 sq. ft.
3rd Floor:	657 sq. ft.
Garage Floor:	670 sq. ft.

#### General Information

Stories:	3
Width:	54'-0"
Depth:	44'-0"
Height:	33'-6"

#### Architectural Style

Hampton  
Shingle  
Traditional

#### Number of Rooms

Bedrooms:	5
Full Baths:	3
Half Baths:	1

#### Garage

Garage Size:	3
Garage Door Location:	Front
Garage Type:	Tandem

#### Roof Pitches

Primary:	8:12
----------	------

#### Wall Heights

Main:	9'-0"
Upper:	9'-0"
3rd Floor:	8'-0"
Lower:	0'-0"

#### Foundation Type

Crawl Space

#### Roof Framing

Trusses

#### Floor Load

Live (lbs):	40 PSF
Dead (lbs):	10 PSF

#### Roof Load

Live (lbs):	25 PSF
Dead (lbs):	15 PSF
Wind:	85 MPH

#### Design Features

- Bonus Space @ Upper Floor
- Laundry Room @ Upper Floor
- Living & Family Room
- Master Bedroom @ Upper Floor Rear
- Narrow Lot
- View Lot - Rear