

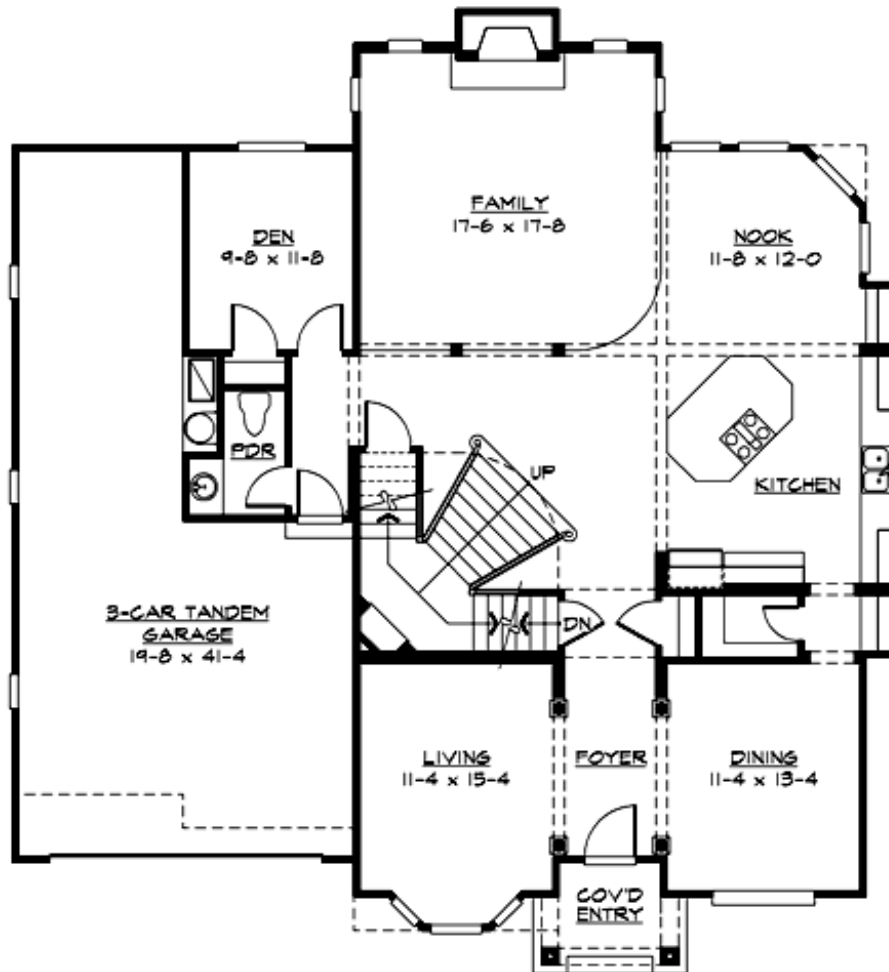
## KIRKLAND RIDGE - PLAN M3445A3FT-0DB

Total Area: 4430 sq. ft.  
Garage Area: 660 sq. ft.  
Garage Area: 660 sq. ft.  
Garage Size: 3  
Stories: 3  
Bedrooms: 5  
Full Baths: 3  
Half Baths: 1  
Width: 52'-0"  
Depth: 54'-0"  
Height: 32'-0"  
Foundation: Daylight Basement



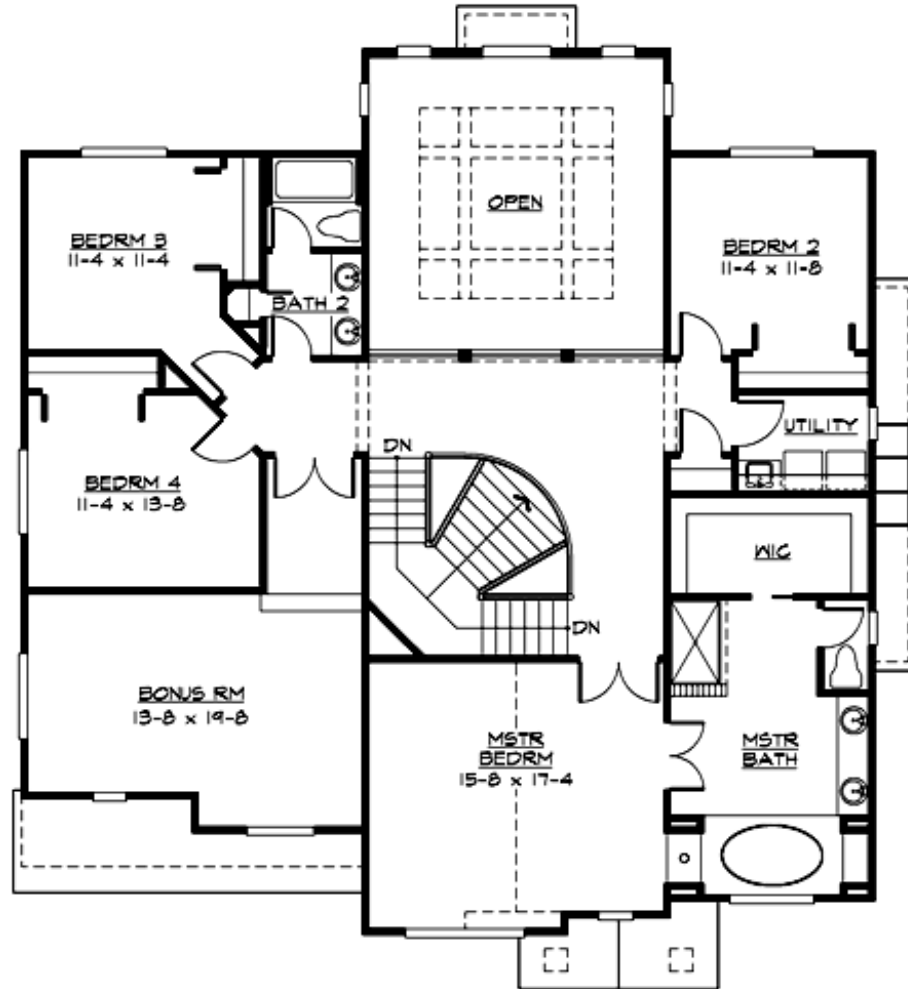
## KIRKLAND RIDGE - PLAN M3445A3FT-0DB

### MAIN FLOOR



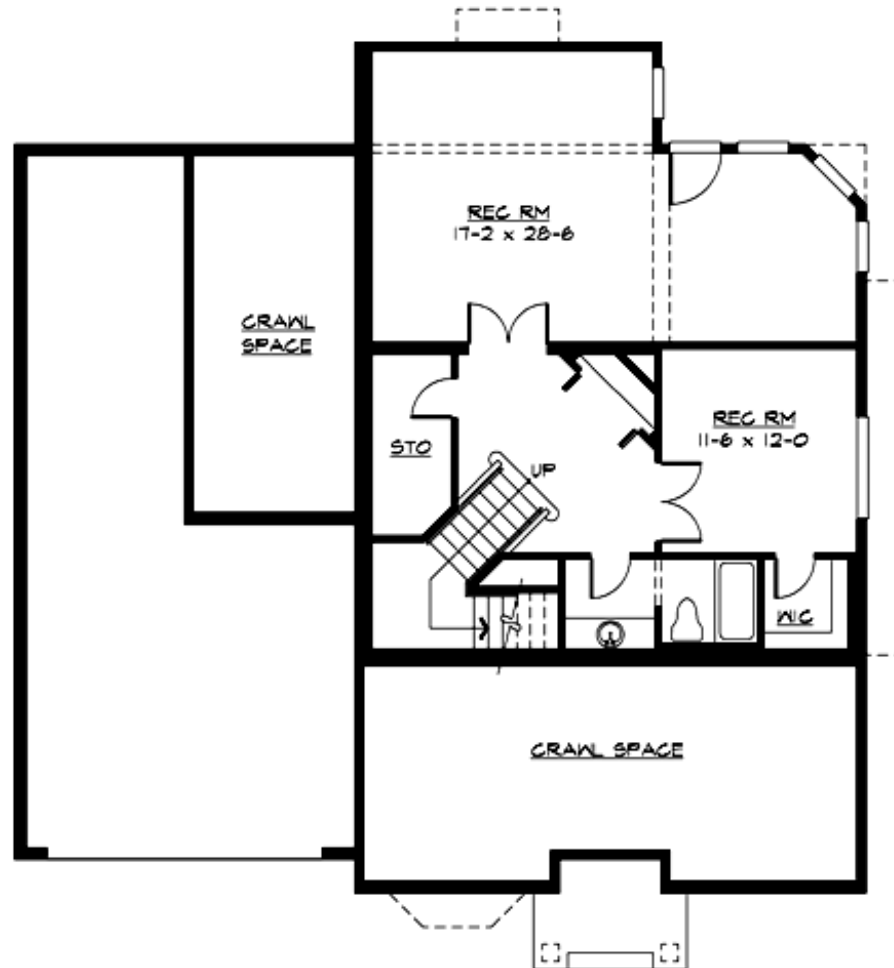
## KIRKLAND RIDGE - PLAN M3445A3FT-0DB

### UPPER FLOOR



**KIRKLAND RIDGE - PLAN M3445A3FT-0DB**

**LOWER FLOOR**





## KIRKLAND RIDGE - PLAN M3445A3FT-0DB

### PLAN DETAILS

#### Area Summary

Total Area: 4430 sq. ft.  
Main Floor: 1670 sq. ft.  
Upper Floor: 1775 sq. ft.  
Lower Floor: 985 sq. ft.  
Garage Floor: 660 sq. ft.

#### General Information

Stories: 3  
Width: 52'-0"  
Depth: 54'-0"  
Height: 32'-0"

#### Architectural Style

Hampton  
Shingle  
Traditional

#### Number of Rooms

Bedrooms: 5  
Full Baths: 3  
Half Baths: 1

#### Garage

Garage Size: 3  
Garage Door Location: Front  
Garage Type: Tandem

#### Roof Pitches

Primary: 8:12

#### Wall Heights

Main: 9'-0"  
Upper: 8'-0"  
3rd Floor: 0'-0"  
Lower: 9'-0"

#### Foundation Type

Daylight Basement

#### Roof Framing

Trusses

#### Floor Load

Live (lbs): 40 PSF  
Dead (lbs): 10 PSF

#### Roof Load

Live (lbs): 25 PSF  
Dead (lbs): 15 PSF  
Wind: 85 MPH

#### Design Features

- Bonus Space @ Upper Floor & Lower Floor
- Den/Office
- Laundry Room @ Upper Floor
- Living & Family Room
- Master Bedroom @ Upper Floor Front
- Narrow Lot