

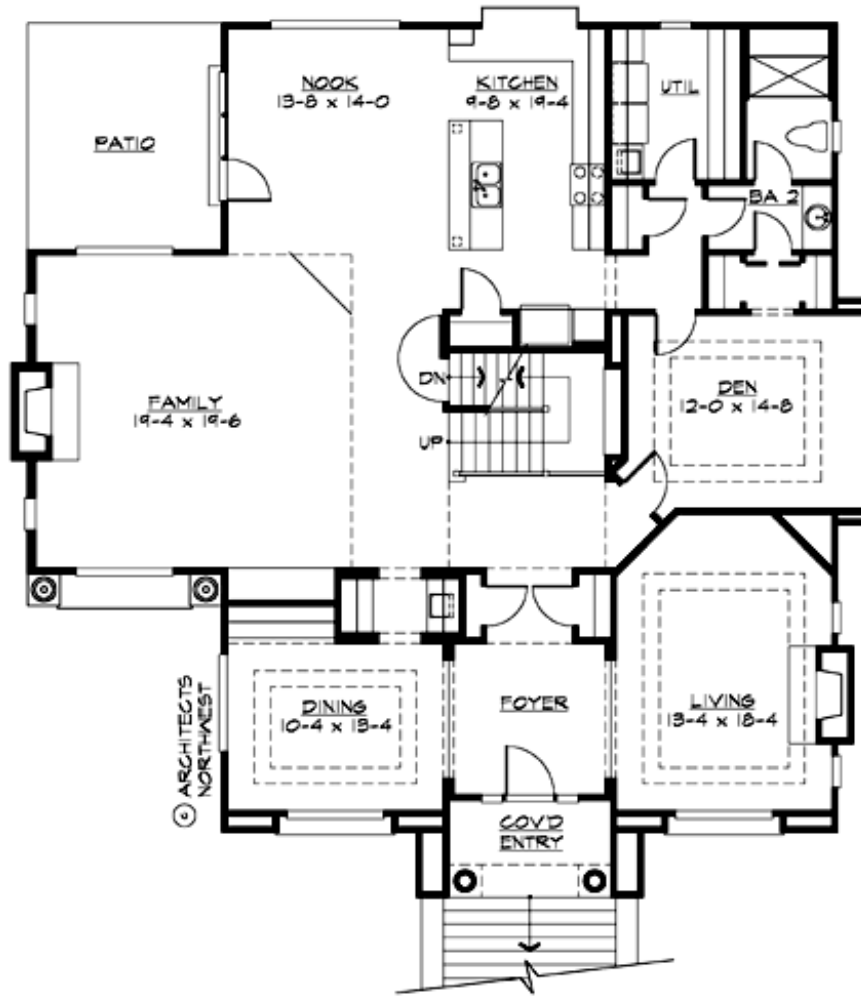
## ROSARIO - PLAN M3550B1FU2STU-2

Total Area: 3800 sq. ft.  
Garage Area: 1160 sq. ft.  
Garage Area: 1160 sq. ft.  
Garage Size: 3  
Stories: 3  
Bedrooms: 4  
Full Baths: 4  
Width: 53'-0"  
Depth: 54'-0"  
Height: 26'-0"  
Foundation: Crawl Space



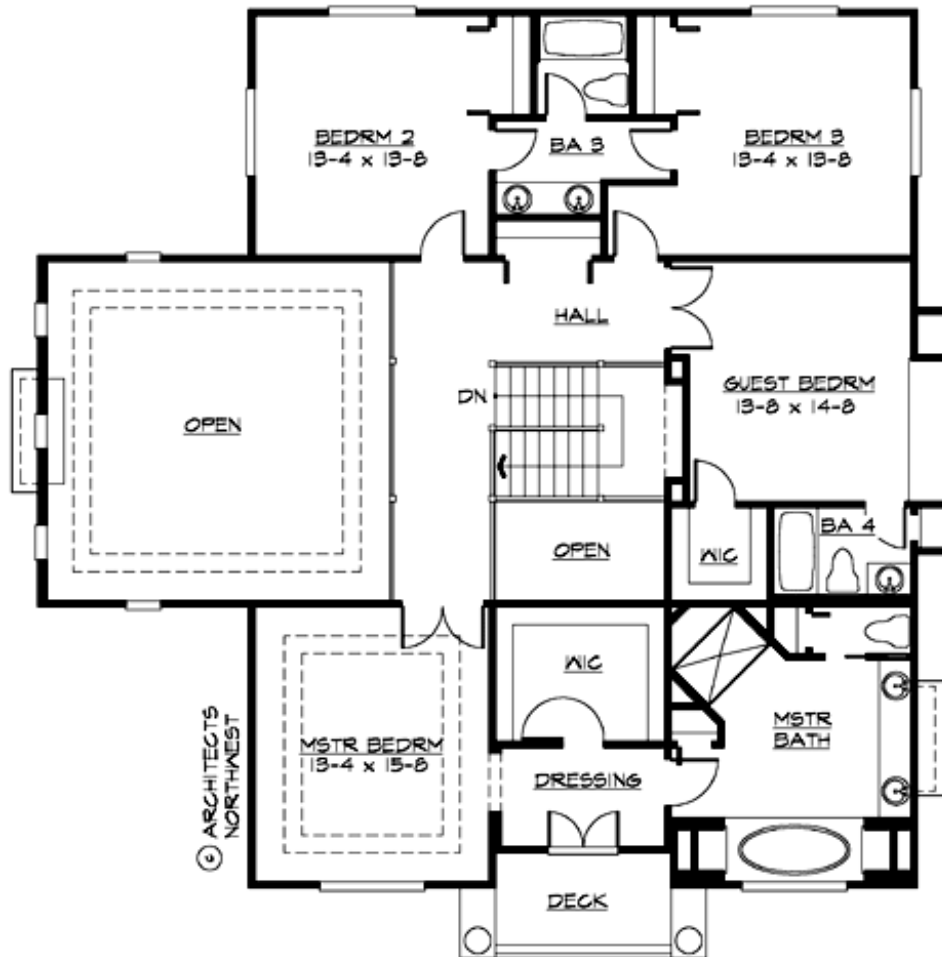
## ROSARIO - PLAN M3550B1FU2STU-2

### MAIN FLOOR



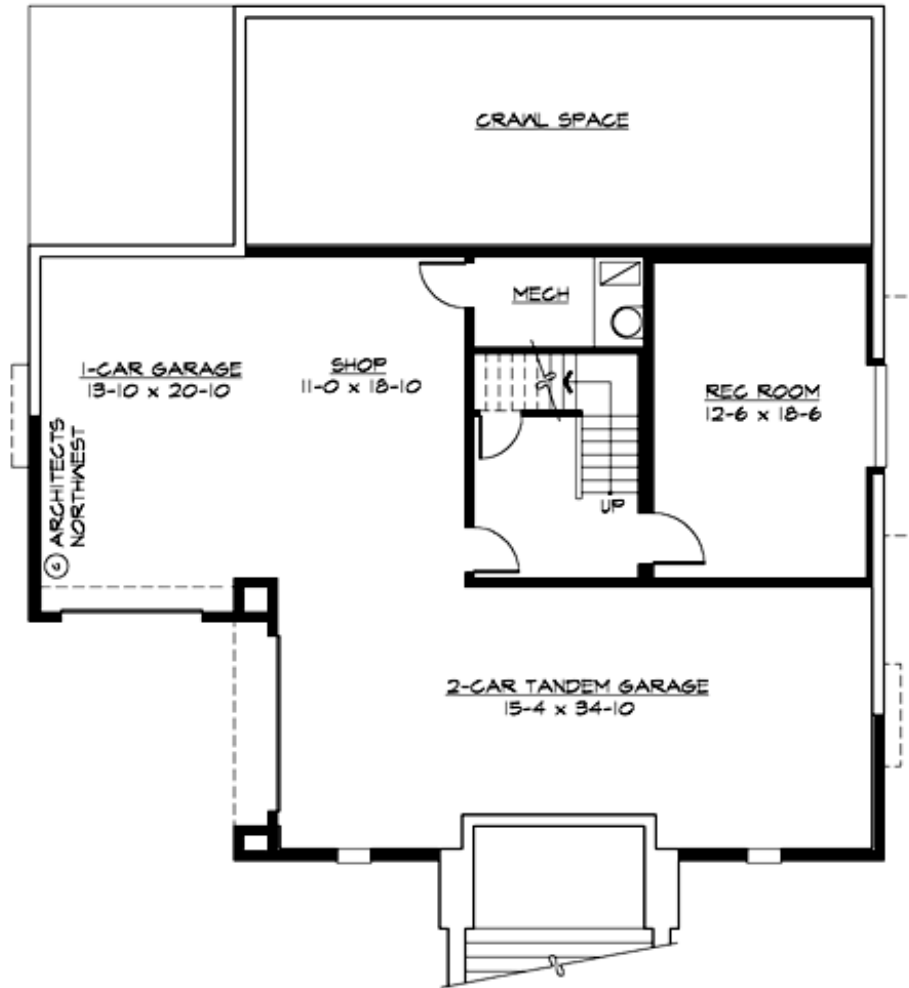
## ROSARIO - PLAN M3550B1FU2STU-2

### UPPER FLOOR



## ROSARIO - PLAN M3550B1FU2STU-2

### LOWER FLOOR



## ROSARIO - PLAN M3550B1FU2STU-2

### PLAN DETAILS

#### Area Summary

Total Area: 3800 sq. ft.  
Main Floor: 2080 sq. ft.  
Upper Floor: 1580 sq. ft.  
Lower Floor: 140 sq. ft.  
Garage Floor: 1160 sq. ft.

#### General Information

Stories: 3  
Width: 53'-0"  
Depth: 54'-0"  
Height: 26'-0"

#### Architectural Style

Chateau  
European  
Traditional

#### Number of Rooms

Bedrooms: 4  
Full Baths: 4

#### Garage

Garage Size: 3  
Garage Door Location: Front  
Garage Type: Under

#### Roof Pitches

Primary: 4:12

#### Wall Heights

Main: 9'-0"  
Upper: 9'-0"  
3rd Floor: 0'-0"  
Lower: 9'-0"

#### Foundation Type

Crawl Space

#### Roof Framing

Trusses

#### Floor Load

Live (lbs): 40 PSF  
Dead (lbs): 10 PSF

#### Roof Load

Live (lbs): 25 PSF  
Dead (lbs): 15 PSF  
Wind: 85 MPH

#### Design Features

- Bonus Space @ Lower Floor
- Den/Office
- Laundry Room @ Main Floor
- Living & Family Room
- Master Bedroom @ Upper Floor Front