

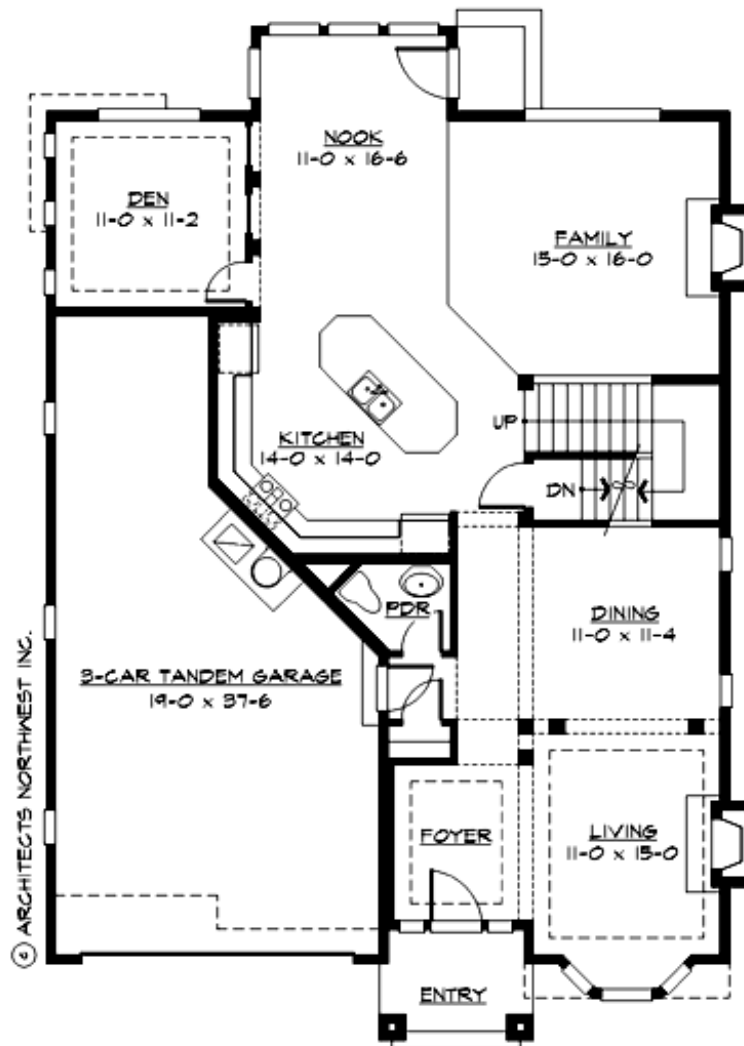
## BRIER HILL HEIGHTS - PLAN M3700D3FT-0DB

Total Area: 4410 sq. ft.  
Garage Area: 600 sq. ft.  
Garage Area: 600 sq. ft.  
Garage Size: 3  
Stories: 4  
Bedrooms: 5  
Full Baths: 3  
Half Baths: 1  
Width: 40'-0"  
Depth: 59'-6"  
Height: 32'-0"  
Foundation: Daylight Basement



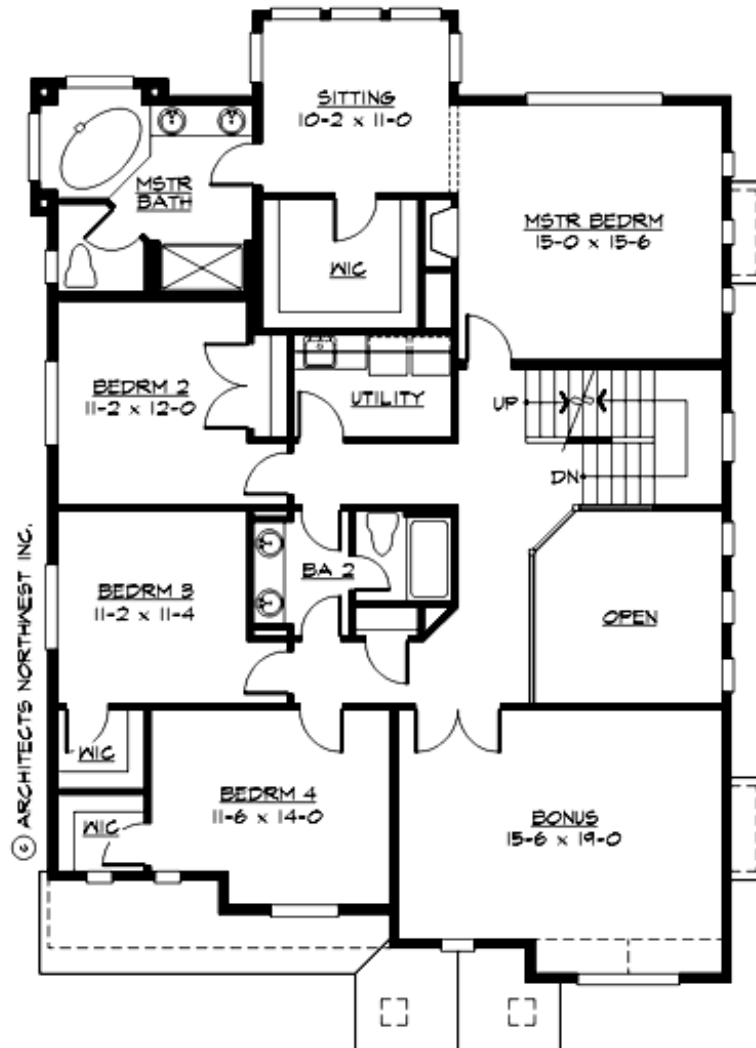
## BRIER HILL HEIGHTS - PLAN M3700D3FT-0DB

### MAIN FLOOR



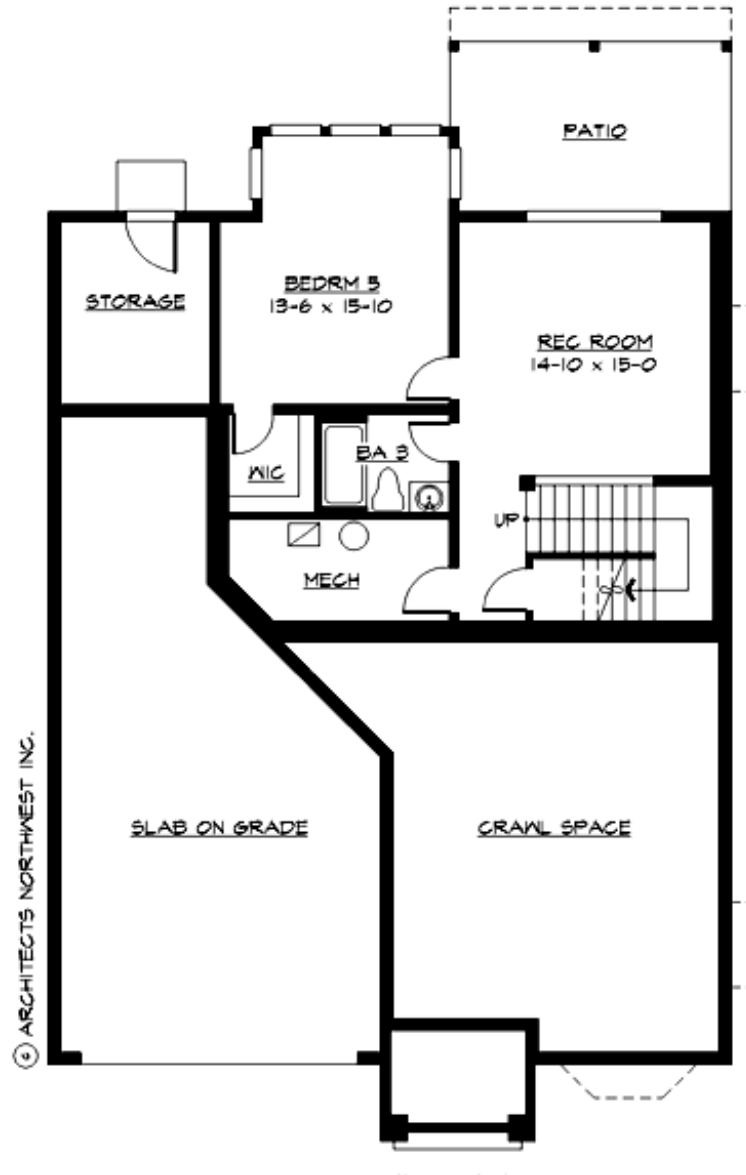
## BRIER HILL HEIGHTS - PLAN M3700D3FT-0DB

### UPPER FLOOR



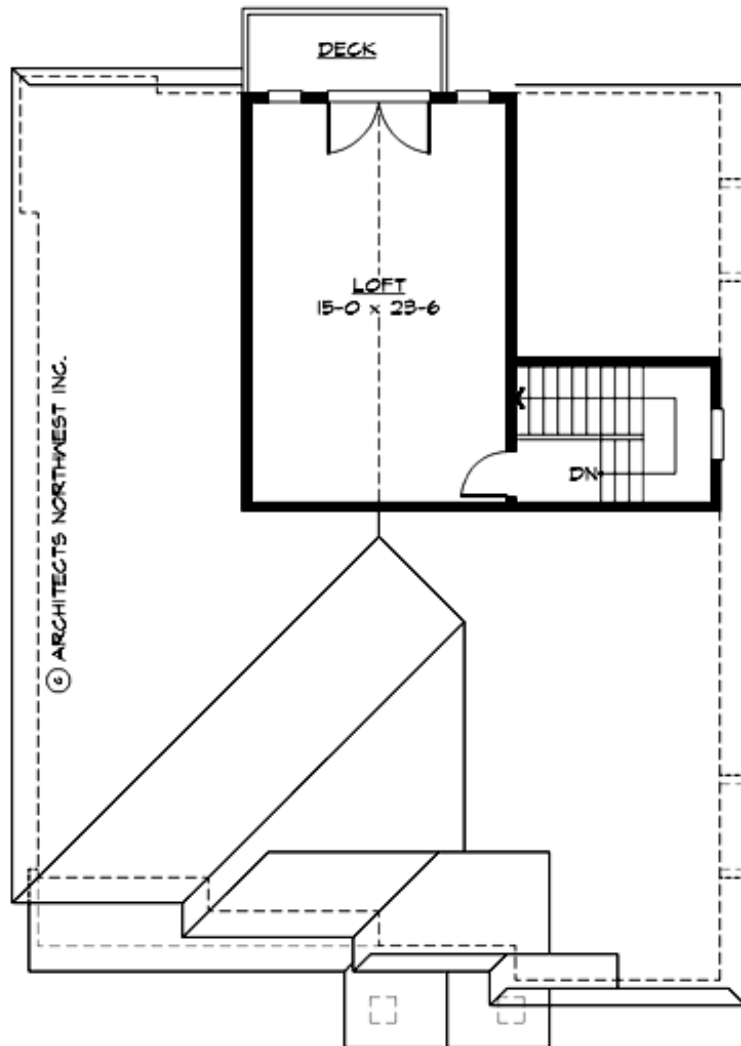
## BRIER HILL HEIGHTS - PLAN M3700D3FT-0DB

### LOWER FLOOR



## BRIER HILL HEIGHTS - PLAN M3700D3FT-0DB

### THIRD FLOOR





## BRIER HILL HEIGHTS - PLAN M3700D3FT-0DB

### PLAN DETAILS

#### Area Summary

Total Area:	4410 sq. ft.
Main Floor:	1430 sq. ft.
Upper Floor:	1790 sq. ft.
3rd Floor:	480 sq. ft.
Lower Floor:	710 sq. ft.
Garage Floor:	600 sq. ft.

#### General Information

Stories:	4
Width:	40'-0"
Depth:	59'-6"
Height:	32'-0"

#### Architectural Style

Hampton  
Shingle  
Traditional

#### Number of Rooms

Bedrooms:	5
Full Baths:	3
Half Baths:	1

#### Garage

Garage Size:	3
Garage Door Location:	Front
Garage Type:	Tandem

#### Roof Pitches

Primary:	8:12
----------	------

#### Wall Heights

Main:	9'-0"
Upper:	8'-0"
3rd Floor:	7'-0"
Lower:	9'-0"

#### Foundation Type

Daylight Basement

#### Roof Framing

Trusses

#### Floor Load

Live (lbs):	40 PSF
Dead (lbs):	10 PSF

#### Roof Load

Live (lbs):	25 PSF
Dead (lbs):	15 PSF
Wind:	85 MPH

#### Design Features

- Bonus Space @ Upper Floor & Lower Floor
- Den/Office
- Laundry Room @ Upper Floor
- Living & Family Room
- Master Bedroom @ Upper Floor Rear
- Narrow Lot
- Rear Porch