

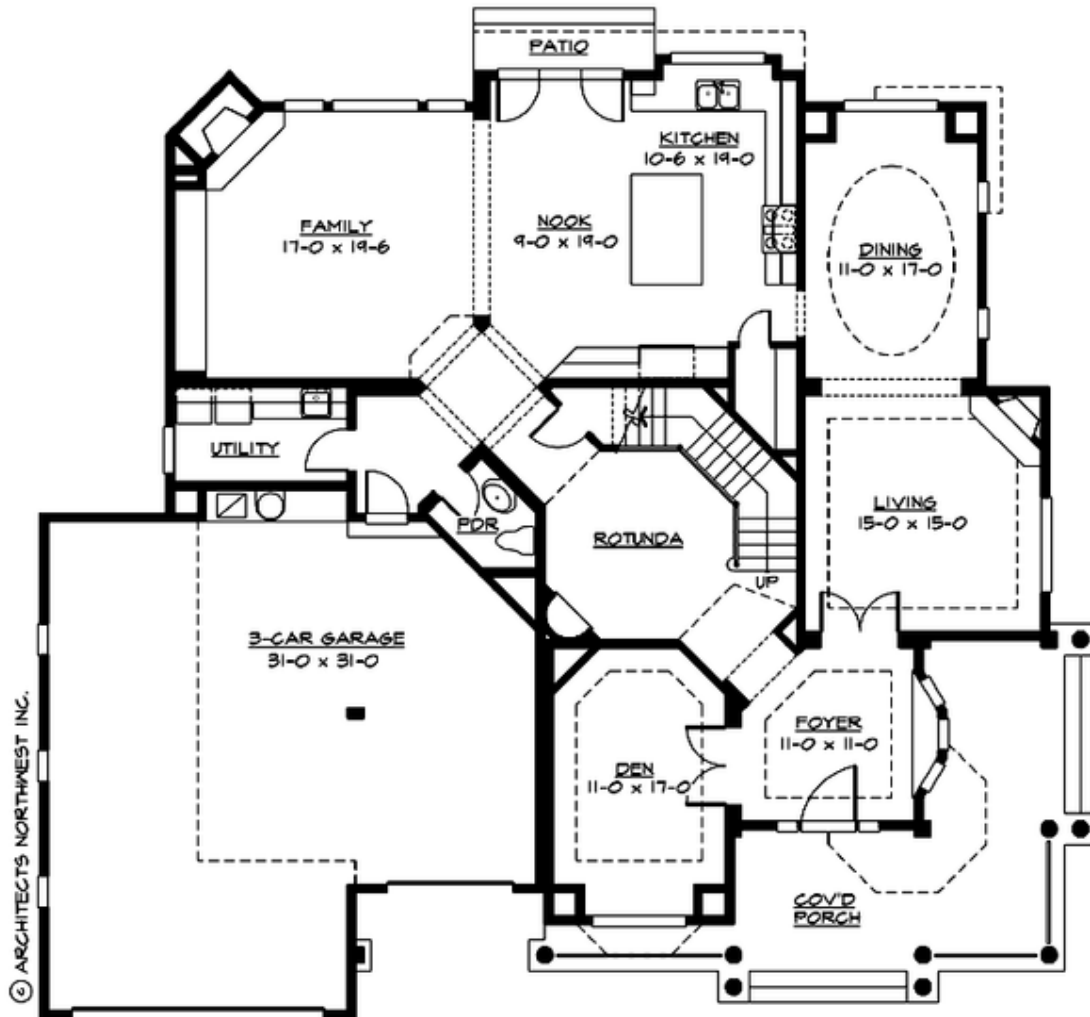
## SEORIA PARK - PLAN M4060A3F-0

Total Area: 4060 sq. ft.  
Garage Area: 925 sq. ft.  
Garage Area: 925 sq. ft.  
Garage Size: 3  
Stories: 2  
Bedrooms: 4  
Full Baths: 3  
Half Baths: 1  
Width: 67'-0"  
Depth: 60'-0"  
Height: 39'-0"  
Foundation: Crawl Space



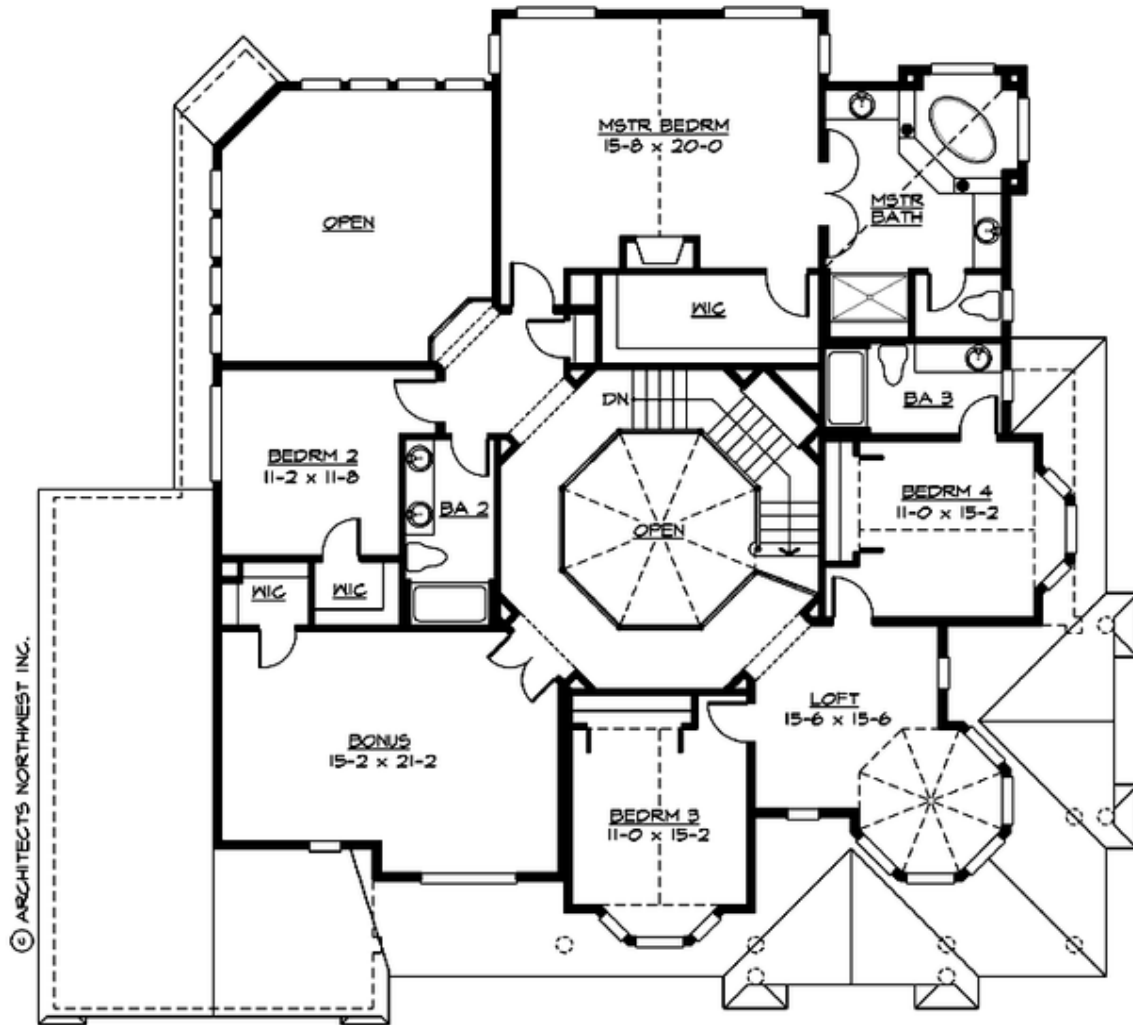
## SEORIA PARK - PLAN M4060A3F-0

### MAIN FLOOR



**SEORIA PARK - PLAN M4060A3F-0**

**UPPER FLOOR**



## SEORIA PARK - PLAN M4060A3F-0

### PLAN DETAILS

#### Area Summary

Total Area: 4060 sq. ft.  
Main Floor: 2000 sq. ft.  
Upper Floor: 2060 sq. ft.  
Garage Floor: 925 sq. ft.

#### General Information

Stories: 2  
Width: 67'-0"  
Depth: 60'-0"  
Height: 39'-0"

#### Architectural Style

Farmhouse  
Shingle  
Victorian

#### Number of Rooms

Bedrooms: 4  
Full Baths: 3  
Half Baths: 1

#### Garage

Garage Size: 3  
Garage Door Location: Front

#### Roof Pitches

Primary: 10:12  
Secondary: 4:12

#### Wall Heights

Main: 9'-0"  
Upper: 9'-0"  
3rd Floor: 0'-0"  
Lower: 0'-0"

#### Foundation Type

Crawl Space

#### Roof Framing

Trusses

#### Floor Load

Live (lbs): 40 PSF  
Dead (lbs): 10 PSF

#### Roof Load

Live (lbs): 25 PSF  
Dead (lbs): 15 PSF  
Wind: 85 MPH

#### Design Features

- Best Selling Plan
- Bonus Space @ Upper Floor
- Den/Office
- Front Porch
- Laundry Room @ Main Floor
- Living & Family Room
- Master Bedroom @ Upper Floor Rear
- View Lot - Rear
- Wide Lot