

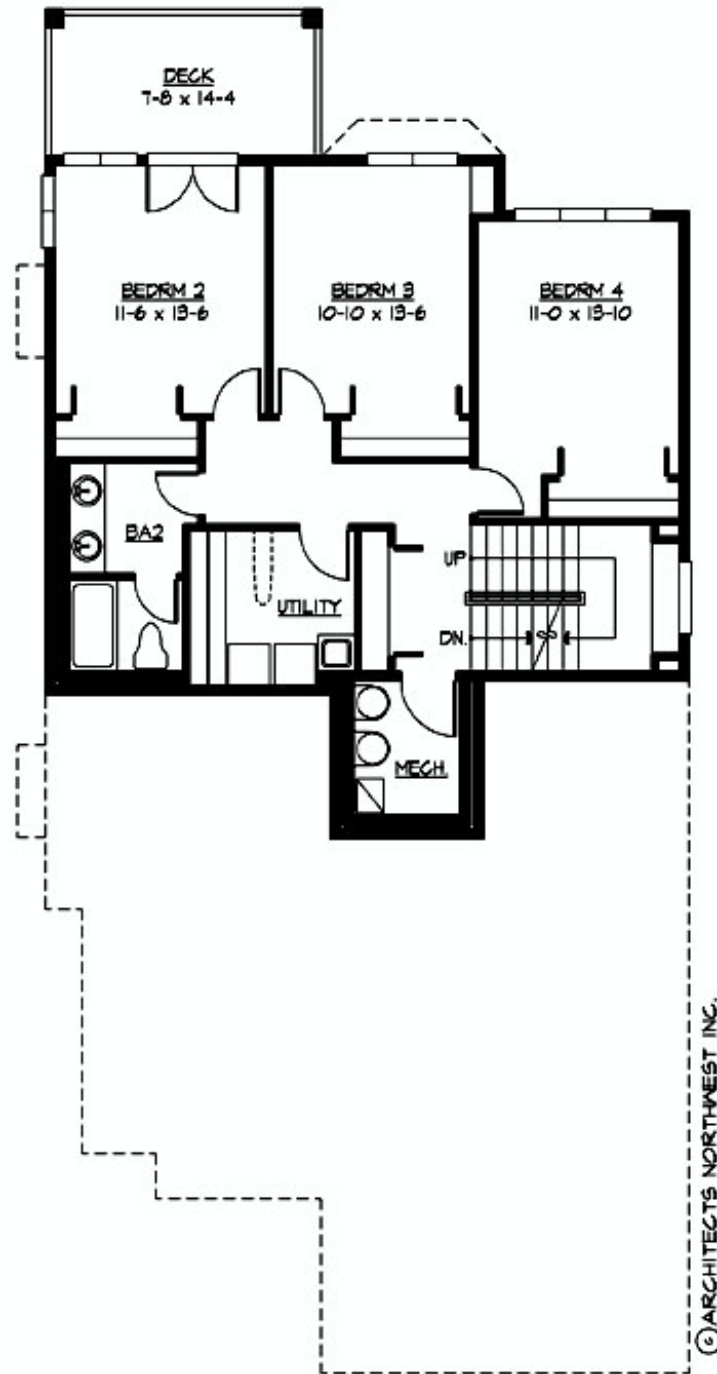
PROMONTORY - PLAN M4411A3FT-0DB

Total Area: 4441 sq. ft.
Garage Area: 598 sq. ft.
Garage Area: 598 sq. ft.
Garage Size: 3
Stories: 4
Bedrooms: 4
Full Baths: 3
Half Baths: 1
Width: 35'-0"
Depth: 69'-0"
Height: 23'-6"
Foundation: Daylight Basement



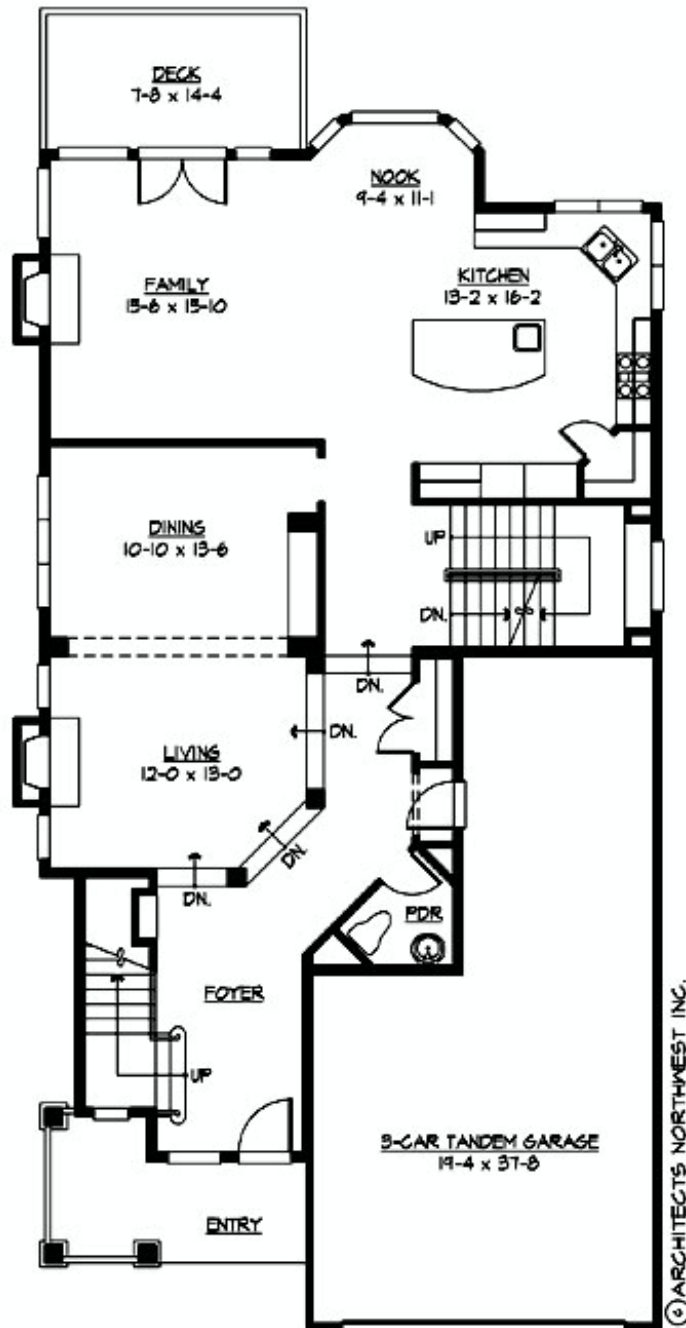
PROMONTORY - PLAN M4411A3FT-0DB

MAIN FLOOR



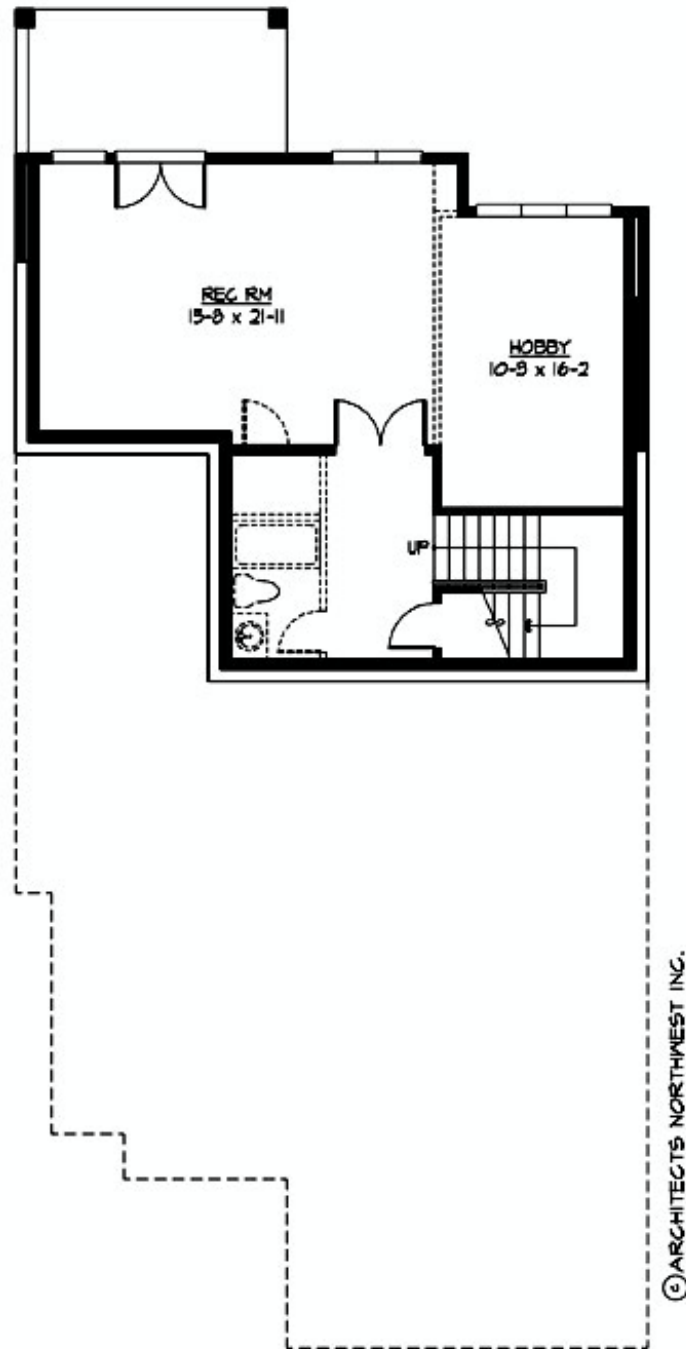
PROMONTORY - PLAN M4411A3FT-0DB

UPPER FLOOR



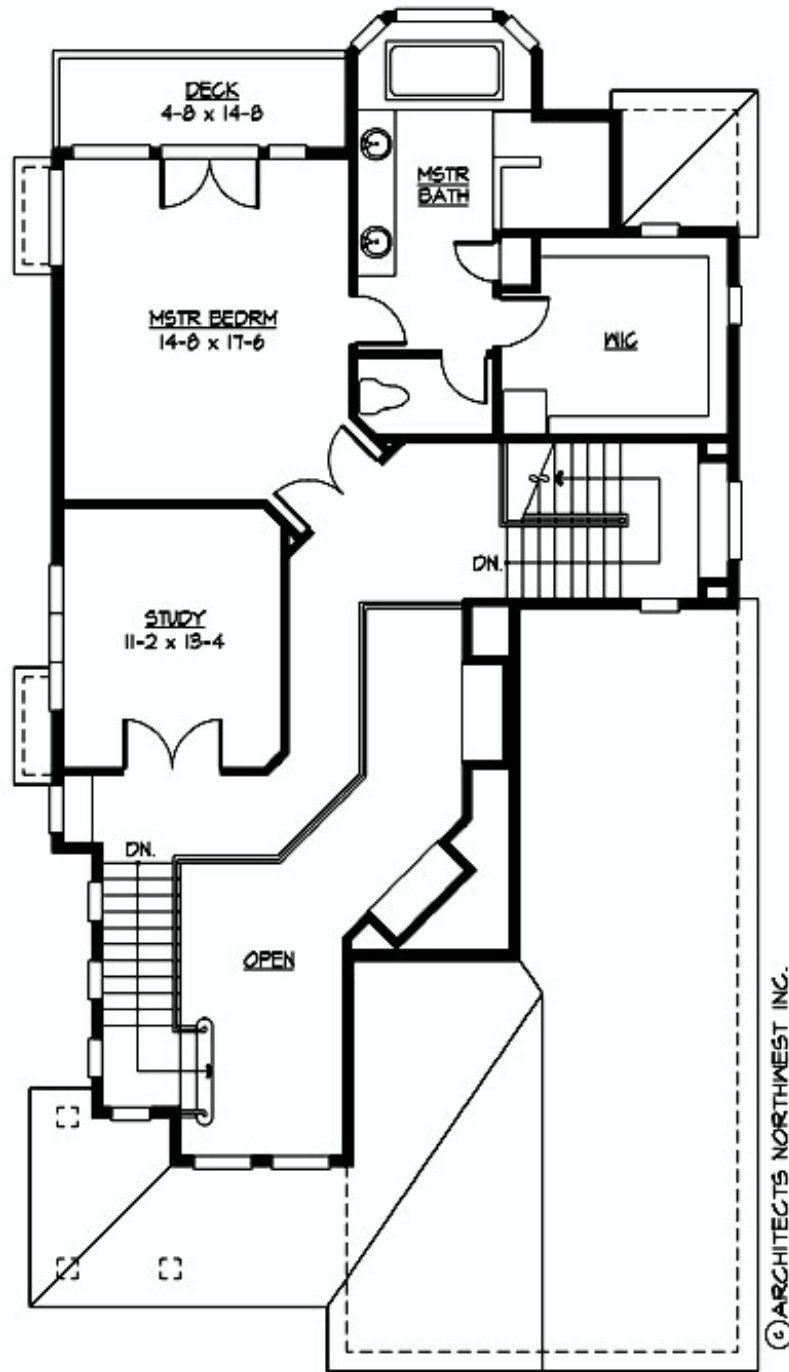
PROMONTORY - PLAN M4411A3FT-0DB

LOWER FLOOR



PROMONTORY - PLAN M4411A3FT-0DB

THIRD FLOOR



© ARCHITECTS NORTHWEST INC.



PROMONTORY - PLAN M4411A3FT-0DB

PLAN DETAILS

Area Summary

Total Area:	4441 sq. ft.
Main Floor:	1532 sq. ft.
Upper Floor:	969 sq. ft.
3rd Floor:	860 sq. ft.
Lower Floor:	1050 sq. ft.
Garage Floor:	598 sq. ft.

General Information

Stories:	4
Width:	35'-0"
Depth:	69'-0"
Height:	23'-6"

Architectural Style

Craftsman
Northwest
Shingle

Number of Rooms

Bedrooms:	4
Full Baths:	3
Half Baths:	1

Garage

Garage Size:	3
Garage Door Location:	Front
Garage Type:	Tandem

Roof Pitches

Primary:	6:12
Secondary:	4:12

Wall Heights

Main:	9'-0"
Upper:	9'-0"
3rd Floor:	8'-0"
Lower:	9'-0"

Foundation Type

Daylight Basement

Roof Framing

Trusses

Floor Load

Live (lbs):	40 PSF
Dead (lbs):	10 PSF

Roof Load

Live (lbs):	25 PSF
Dead (lbs):	15 PSF
Wind:	85 MPH

Design Features

- Bonus Space @ Lower Floor
- Den/Office
- Laundry Room @ Lower Floor
- Living & Family Room
- Master Bedroom @ Upper Floor Front
- Narrow Lot
- Rear Porch