

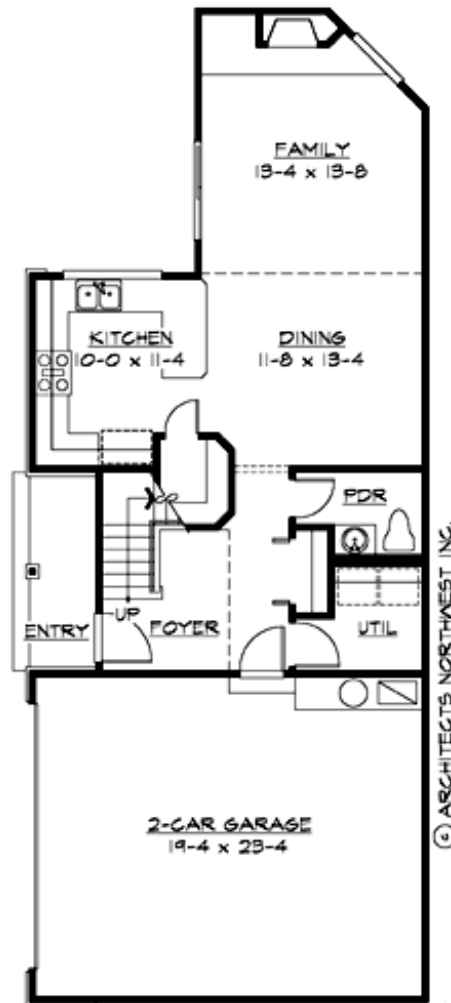
## MOSS BAY - PLAN M1450A2F-0

Total Area: 1450 sq. ft.  
Garage Area: 575 sq. ft.  
Garage Area: 575 sq. ft.  
Garage Size: 2  
Stories: 2  
Bedrooms: 3  
Full Baths: 2  
Half Baths: 1  
Width: 24'-0"  
Depth: 60'-0"  
Height: 22'-6"  
Foundation: Crawl Space



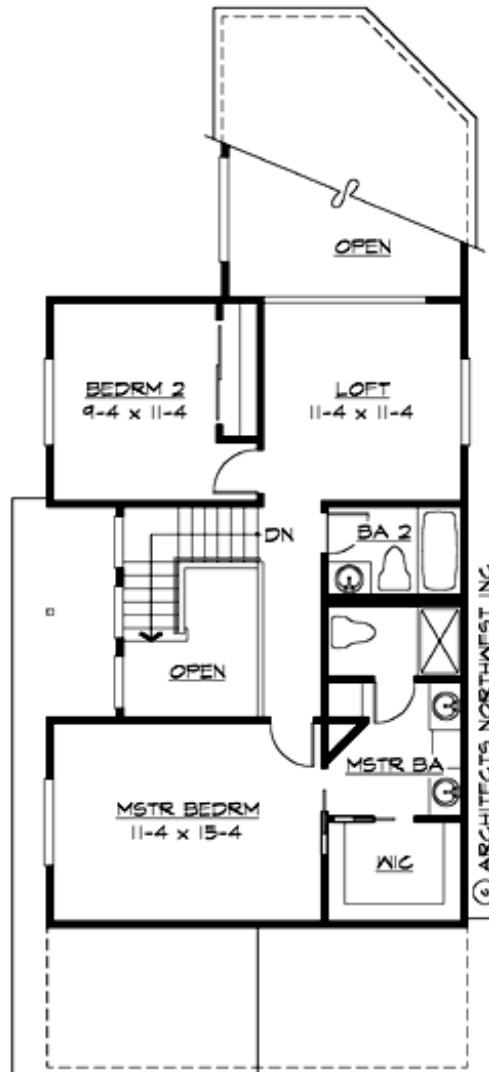
## MOSS BAY - PLAN M1450A2F-0

### MAIN FLOOR



## MOSS BAY - PLAN M1450A2F-0

### UPPER FLOOR





## MOSS BAY - PLAN M1450A2F-0

### PLAN DETAILS

#### Area Summary

Total Area:	1450 sq. ft.
Main Floor:	730 sq. ft.
Upper Floor:	720 sq. ft.
Garage Floor:	575 sq. ft.

#### General Information

Stories:	2
Width:	24'-0"
Depth:	60'-0"
Height:	22'-6"

#### Architectural Style

Craftsman  
Northwest  
Shotgun

#### Number of Rooms

Bedrooms:	3
Full Baths:	2
Half Baths:	1

#### Garage

Garage Size:	2
Garage Door Location:	Front

#### Roof Pitches

Primary:	6:12
----------	------

#### Wall Heights

Main:	8'-0"
Upper:	8'-0"
3rd Floor:	0'-0"
Lower:	0'-0"

#### Foundation Type

Crawl Space

#### Roof Framing

Combination

#### Floor Load

Live (lbs):	40 PSF
Dead (lbs):	10 PSF

#### Roof Load

Live (lbs):	25 PSF
Dead (lbs):	15 PSF
Wind:	85 MPH

#### Design Features

- Front Porch
- Laundry Room @ Main Floor
- Living & Family Room
- Master Bedroom @ Upper Floor Front
- Narrow Lot
- Small Plan