

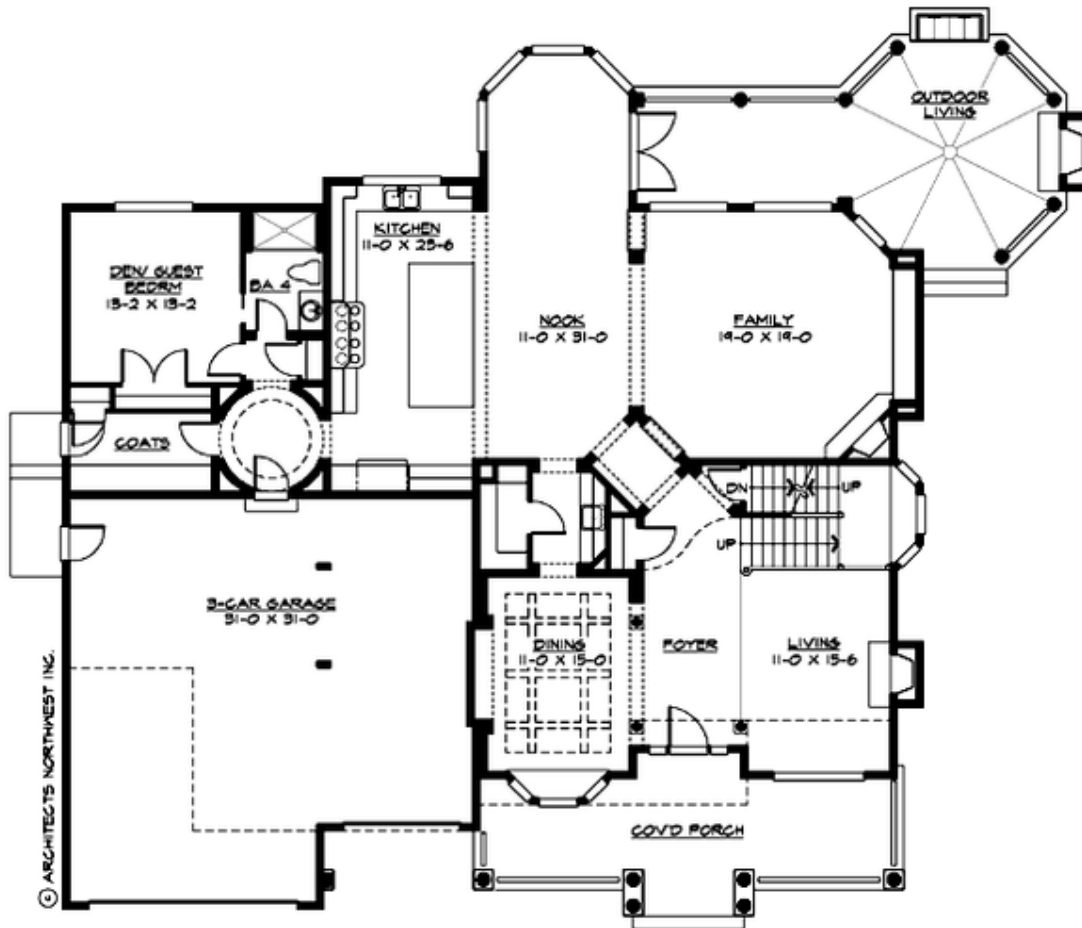
## BLAKELEY WOODS HEIGHTS - PLAN M4590B3F-5DB

Total Area: 6555 sq. ft.  
Garage Area: 945 sq. ft.  
Garage Area: 945 sq. ft.  
Garage Size: 3  
Stories: 3  
Bedrooms: 5  
Full Baths: 5  
Width: 79'-0"  
Depth: 70'-0"  
Height: 30'-0"  
Foundation: Daylight Basement



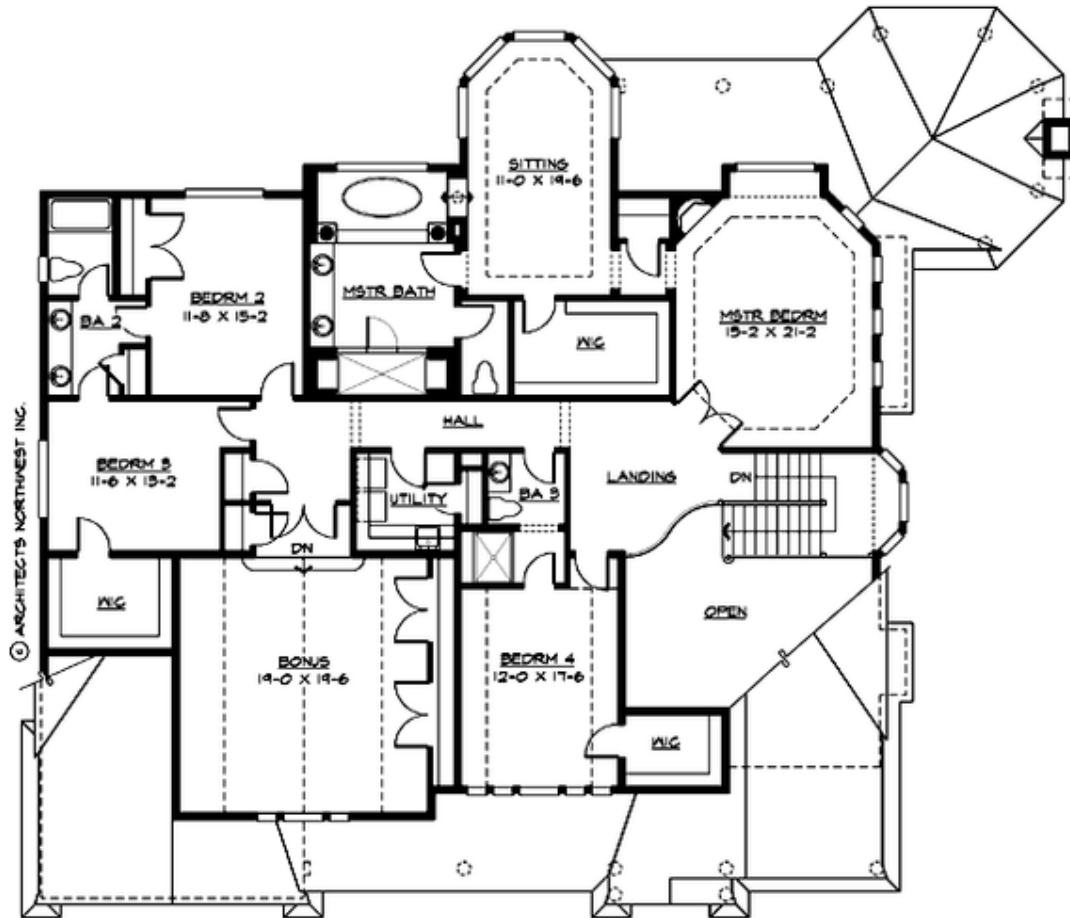
## BLAKELEY WOODS HEIGHTS - PLAN M4590B3F-5DB

### MAIN FLOOR



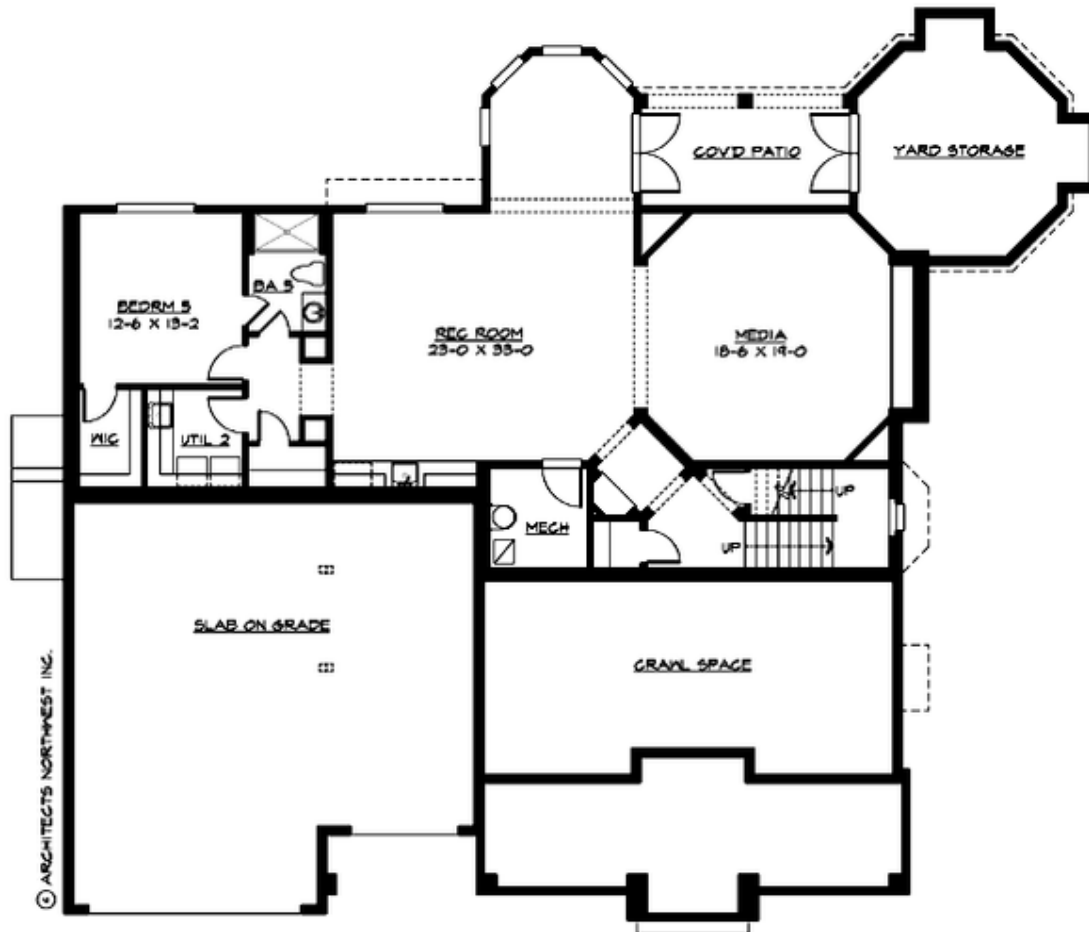
## BLAKELEY WOODS HEIGHTS - PLAN M4590B3F-5DB

### UPPER FLOOR



**BLAKELEY WOODS HEIGHTS - PLAN M4590B3F-5DB**

**LOWER FLOOR**





## BLAKELEY WOODS HEIGHTS - PLAN M4590B3F-5DB

### PLAN DETAILS

#### Area Summary

Total Area:	6555 sq. ft.
Main Floor:	2260 sq. ft.
Upper Floor:	2630 sq. ft.
Lower Floor:	1665 sq. ft.
Garage Floor:	945 sq. ft.

#### General Information

Stories:	3
Width:	79'-0"
Depth:	70'-0"
Height:	30'-0"

#### Architectural Style

Hampton  
Shingle  
Traditional

#### Number of Rooms

Bedrooms:	5
Full Baths:	5

#### Garage

Garage Size:	3
Garage Door Location:	Front

#### Roof Pitches

Primary:	8:12
Secondary:	12:12

#### Wall Heights

Main:	9'-0"
Upper:	9'-0"
3rd Floor:	0'-0"
Lower:	9'-0"

#### Foundation Type

Daylight Basement

#### Roof Framing

Combination

#### Floor Load

Live (lbs):	40 PSF
Dead (lbs):	10 PSF

#### Roof Load

Live (lbs):	25 PSF
Dead (lbs):	15 PSF
Wind:	85 MPH

#### Design Features

- Bonus Space @ Upper Floor & Lower Floor
- Den/Office
- Laundry Room @ Upper & Lower Floor
- Living & Family Room
- Master Bedroom @ Upper Floor Rear
- Rear Porch
- Wide Lot