

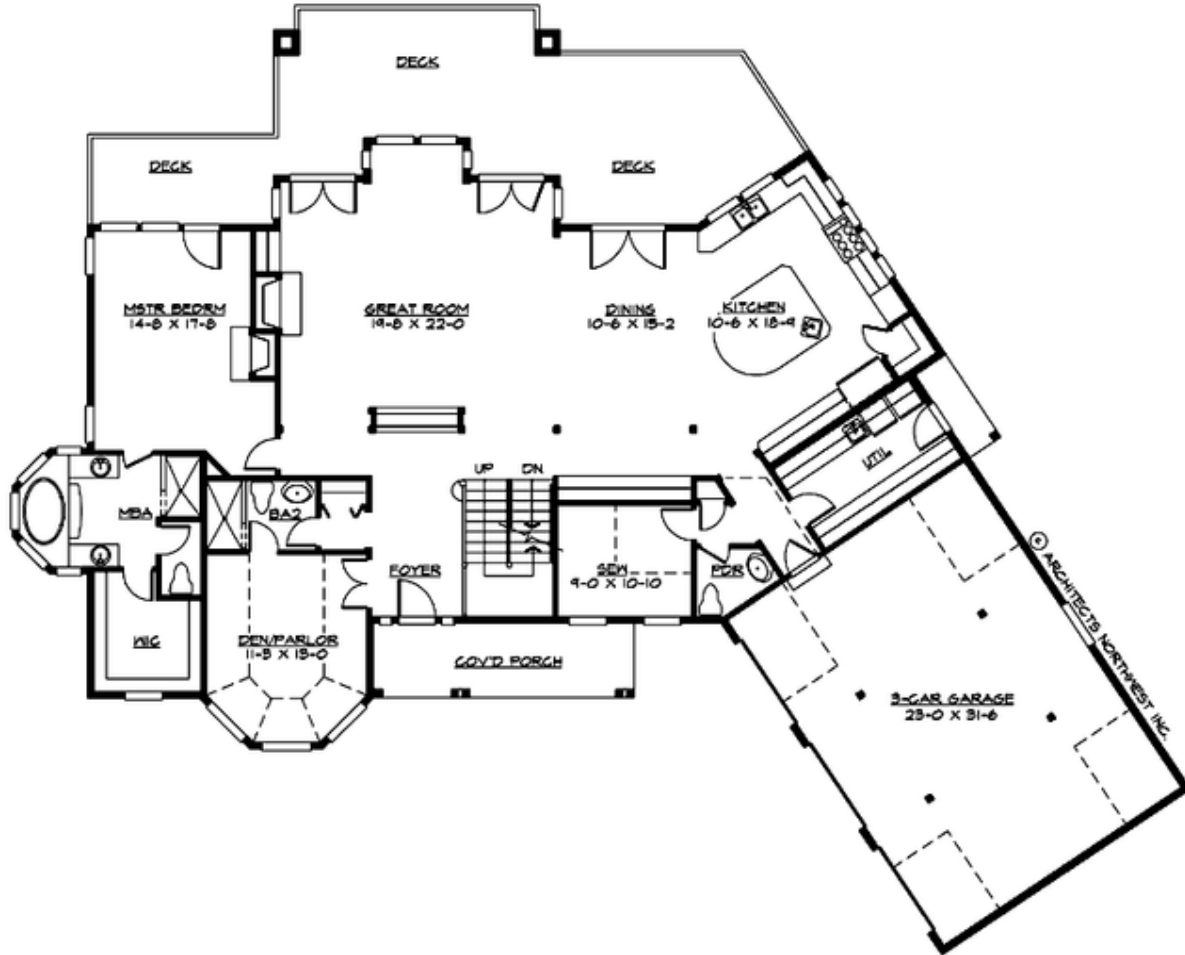
ANDOVER PARK - PLAN M4952A3FA-0DB

Total Area: 4952 sq. ft.
Garage Area: 768 sq. ft.
Garage Size: 3
Stories: 3
Bedrooms: 4
Full Baths: 4
Half Baths: 1
Width: 95'-0"
Depth: 75'-0"
Height: 26'-0"
Foundation: Daylight Basement



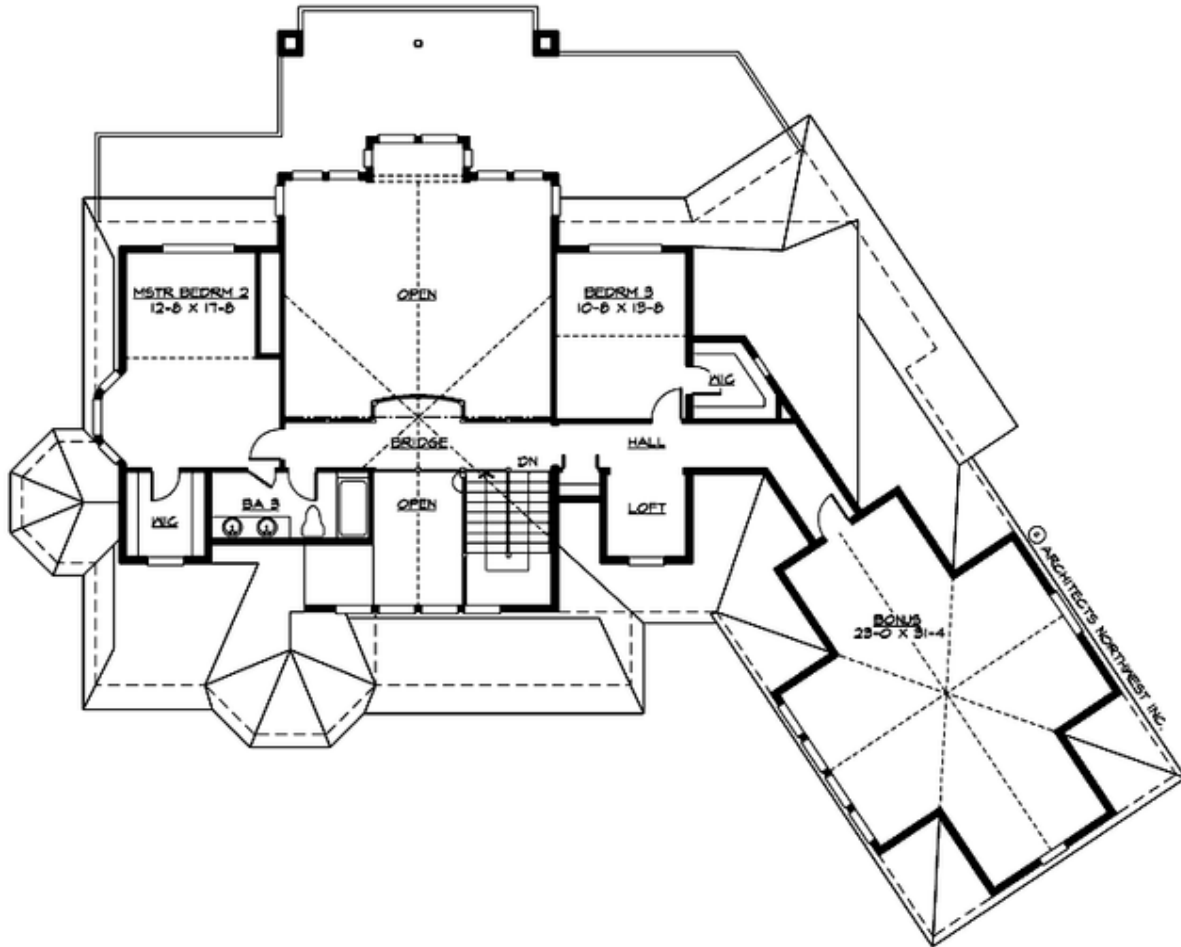
ANDOVER PARK - PLAN M4952A3FA-0DB

MAIN FLOOR



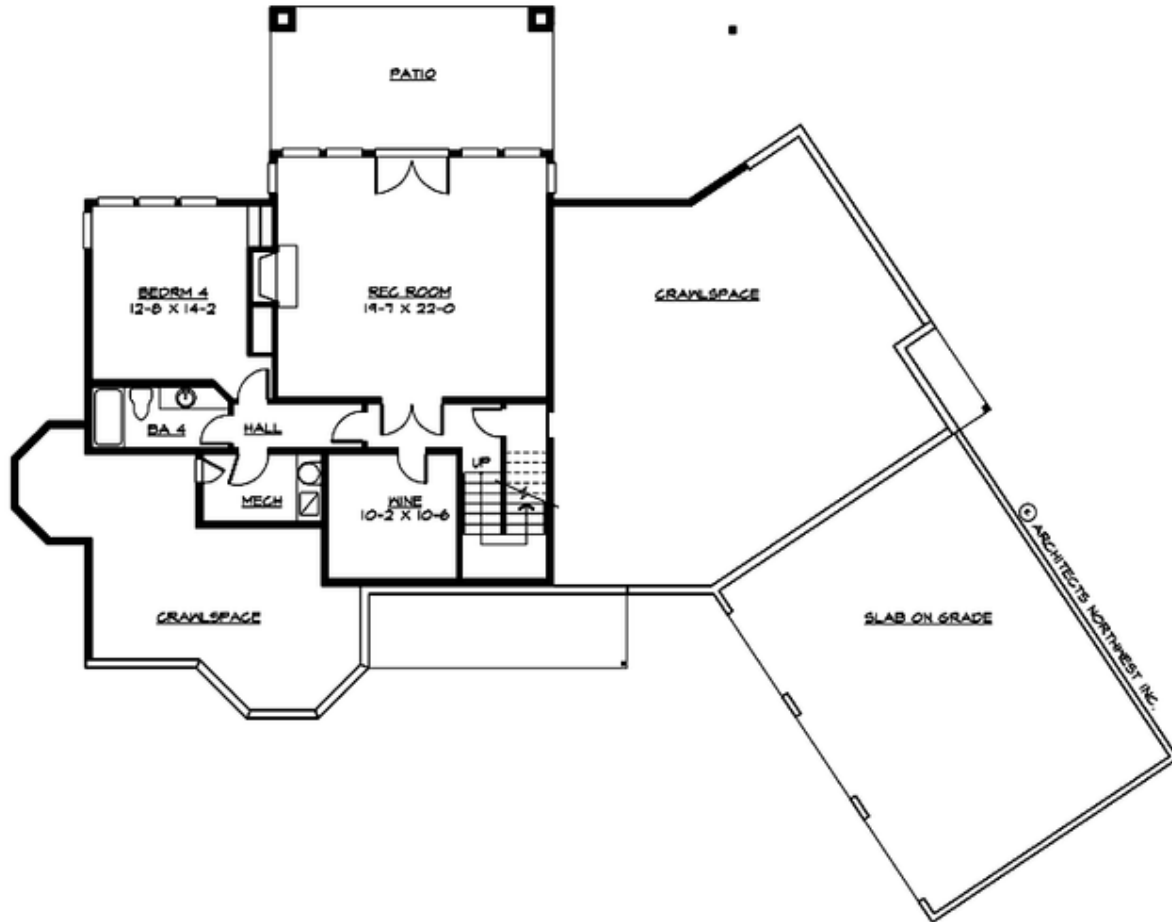
ANDOVER PARK - PLAN M4952A3FA-0DB

UPPER FLOOR



ANDOVER PARK - PLAN M4952A3FA-0DB

LOWER FLOOR



ANDOVER PARK - PLAN M4952A3FA-0DB

PLAN DETAILS

Area Summary

Total Area:	4952 sq. ft.
Main Floor:	2431 sq. ft.
Upper Floor:	1455 sq. ft.
Lower Floor:	1066 sq. ft.
Garage Floor:	768 sq. ft.

General Information

Stories:	3
Width:	95'-0"
Depth:	75'-0"
Height:	26'-0"

Architectural Style

Hampton
Shingle
Traditional

Number of Rooms

Bedrooms:	4
Full Baths:	4
Half Baths:	1

Garage

Garage Size:	3
Garage Door Location:	Front
Garage Type:	Angled

Roof Pitches

Primary:	10:12
Secondary:	12:12

Wall Heights

Main:	10'-0"
Upper:	8'-0"
3rd Floor:	0'-0"
Lower:	9'-0"

Foundation Type

Daylight Basement

Roof Framing

Stick

Floor Load

Live (lbs):	40 PSF
Dead (lbs):	10 PSF

Roof Load

Live (lbs):	25 PSF
Dead (lbs):	15 PSF
Wind:	85 MPH

Design Features

- Best Selling Plan
- Bonus Space @ Upper Floor & Lower Floor
- Den/Office
- Front Porch
- Great Room
- Laundry Room @ Main Floor
- Master Bedroom @ Main Floor Rear
- View Lot - Rear