

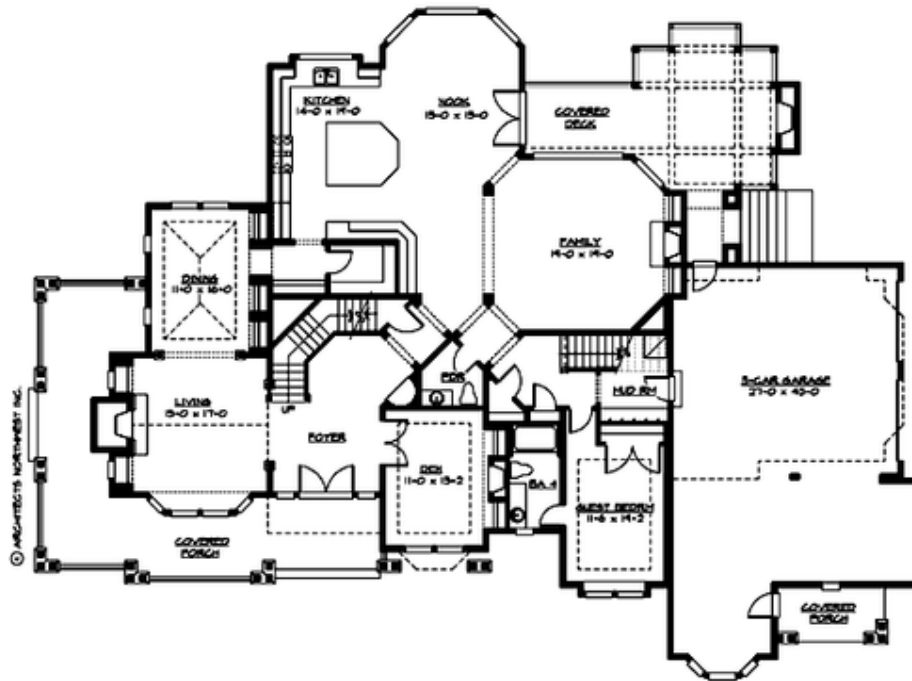
## CEDAR HILLS PARK - PLAN M5250A3S-0DB

Total Area: 6590 sq. ft.  
Garage Area: 1060 sq. ft.  
Garage Area: 1060 sq. ft.  
Garage Size: 3  
Stories: 3  
Bedrooms: 6  
Full Baths: 5  
Half Baths: 1  
Width: 98'-0"  
Depth: 74'-0"  
Height: 34'-6"  
Foundation: Daylight Basement



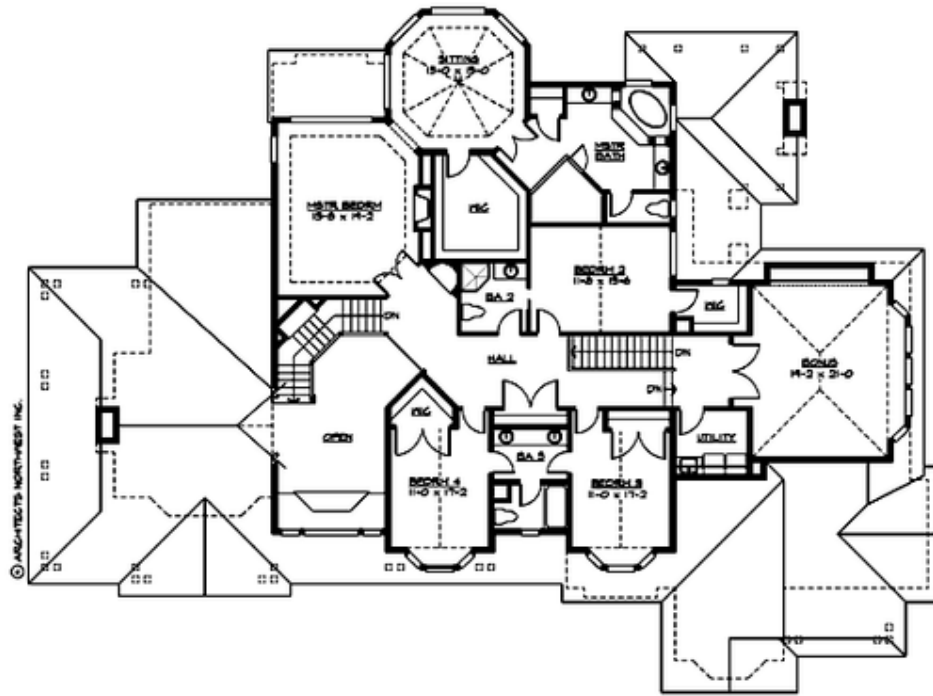
## CEDAR HILLS PARK - PLAN M5250A3S-0DB

### MAIN FLOOR



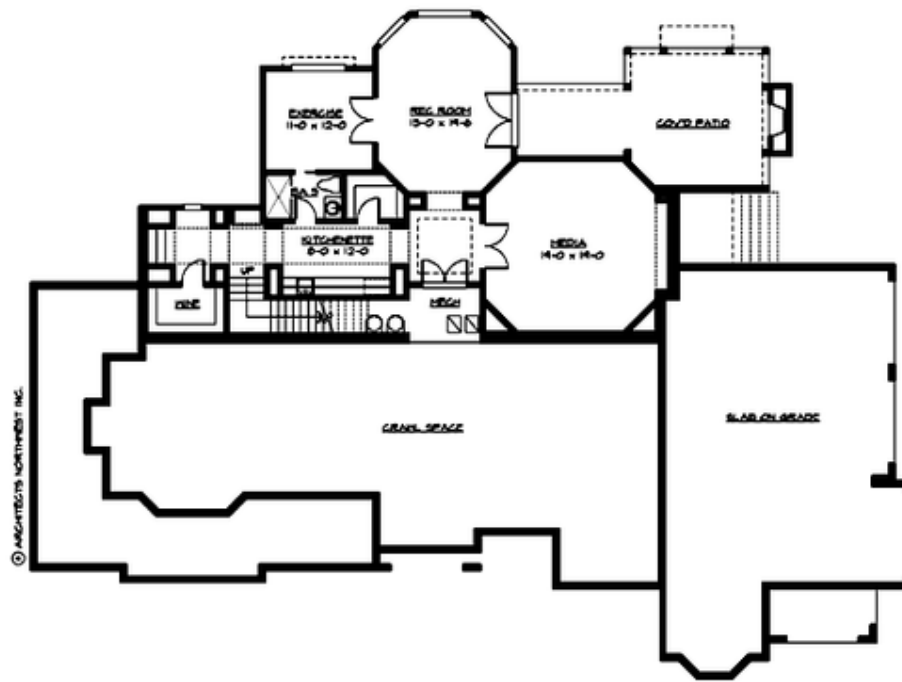
## CEDAR HILLS PARK - PLAN M5250A3S-0DB

### UPPER FLOOR



## CEDAR HILLS PARK - PLAN M5250A3S-0DB

### LOWER FLOOR





## CEDAR HILLS PARK - PLAN M5250A3S-0DB

### PLAN DETAILS

#### Area Summary

Total Area:	6590 sq. ft.
Main Floor:	2750 sq. ft.
Upper Floor:	2500 sq. ft.
Lower Floor:	1340 sq. ft.
Garage Floor:	1060 sq. ft.

#### General Information

Stories:	3
Width:	98'-0"
Depth:	74'-0"
Height:	34'-6"

#### Architectural Style

Craftsman  
Northwest  
Shingle

#### Number of Rooms

Bedrooms:	6
Full Baths:	5
Half Baths:	1

#### Garage

Garage Size:	3
Garage Door Location:	Side

#### Roof Pitches

Primary:	8:12
----------	------

#### Wall Heights

Main:	9'-0"
Upper:	9'-0"
3rd Floor:	0'-0"
Lower:	10'-0"

#### Foundation Type

Daylight Basement

#### Roof Framing

Trusses

#### Floor Load

Live (lbs):	40 PSF
Dead (lbs):	10 PSF

#### Roof Load

Live (lbs):	25 PSF
Dead (lbs):	15 PSF
Wind:	85 MPH

#### Design Features

- Bonus Space @ Upper Floor & Lower Floor
- Den/Office
- Laundry Room @ Main & Upper Floor
- Living & Family Room
- Master Bedroom @ Upper Floor Rear
- Wrap-Around Porch