

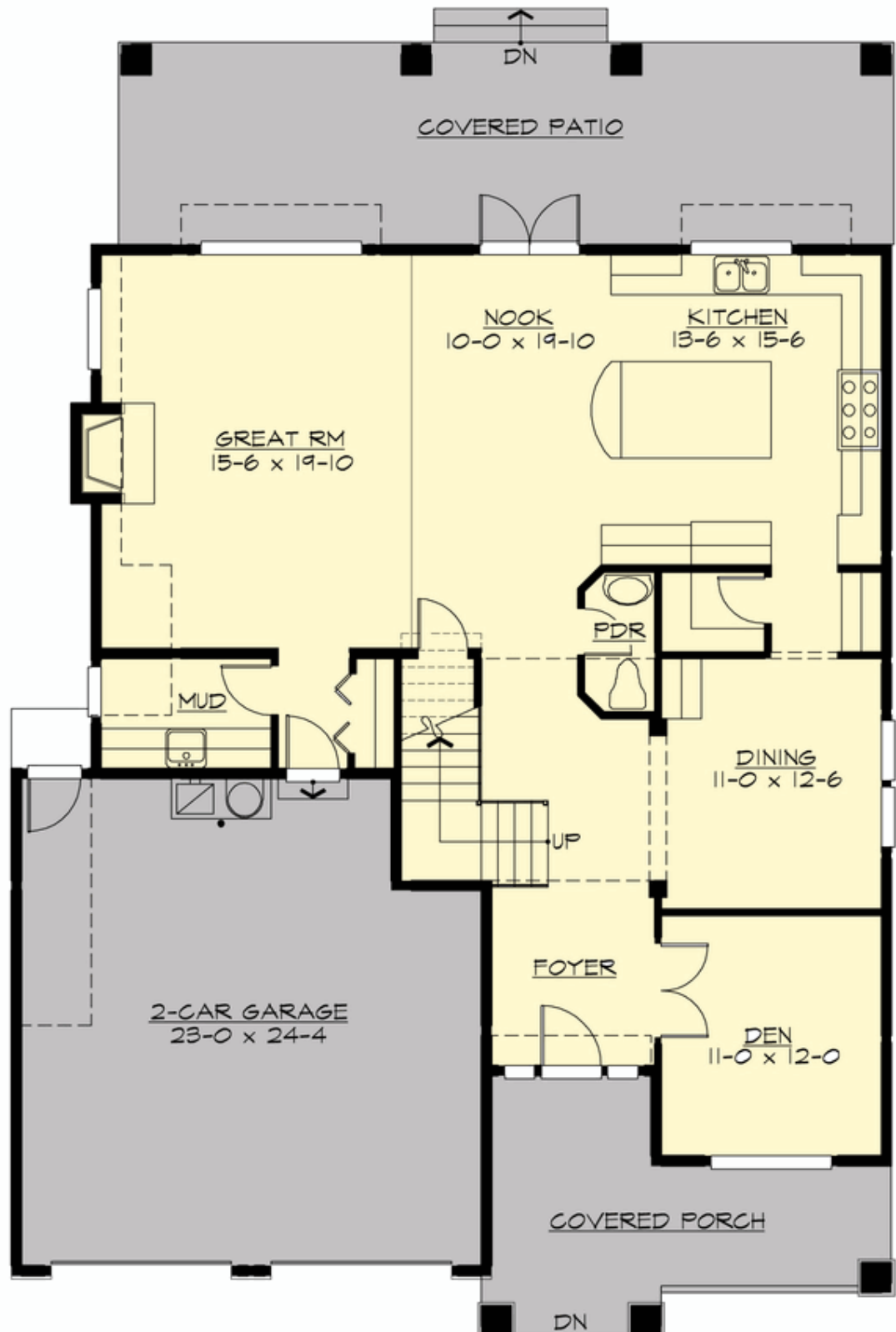
## WOODLAND MEADOWS - PLAN M2823A2F-19

Total Area: 3218 sq. ft.  
Garage Area: 583 sq. ft.  
Garage Area: 583 sq. ft.  
Garage Size: 2  
Stories: 2  
Bedrooms: 3  
Full Baths: 3  
Half Baths: 1  
Width: 44'-0"  
Depth: 64'-6"  
Height: 24'-6"  
Foundation: Crawl Space



WOODLAND MEADOWS - PLAN M2823A2F-19

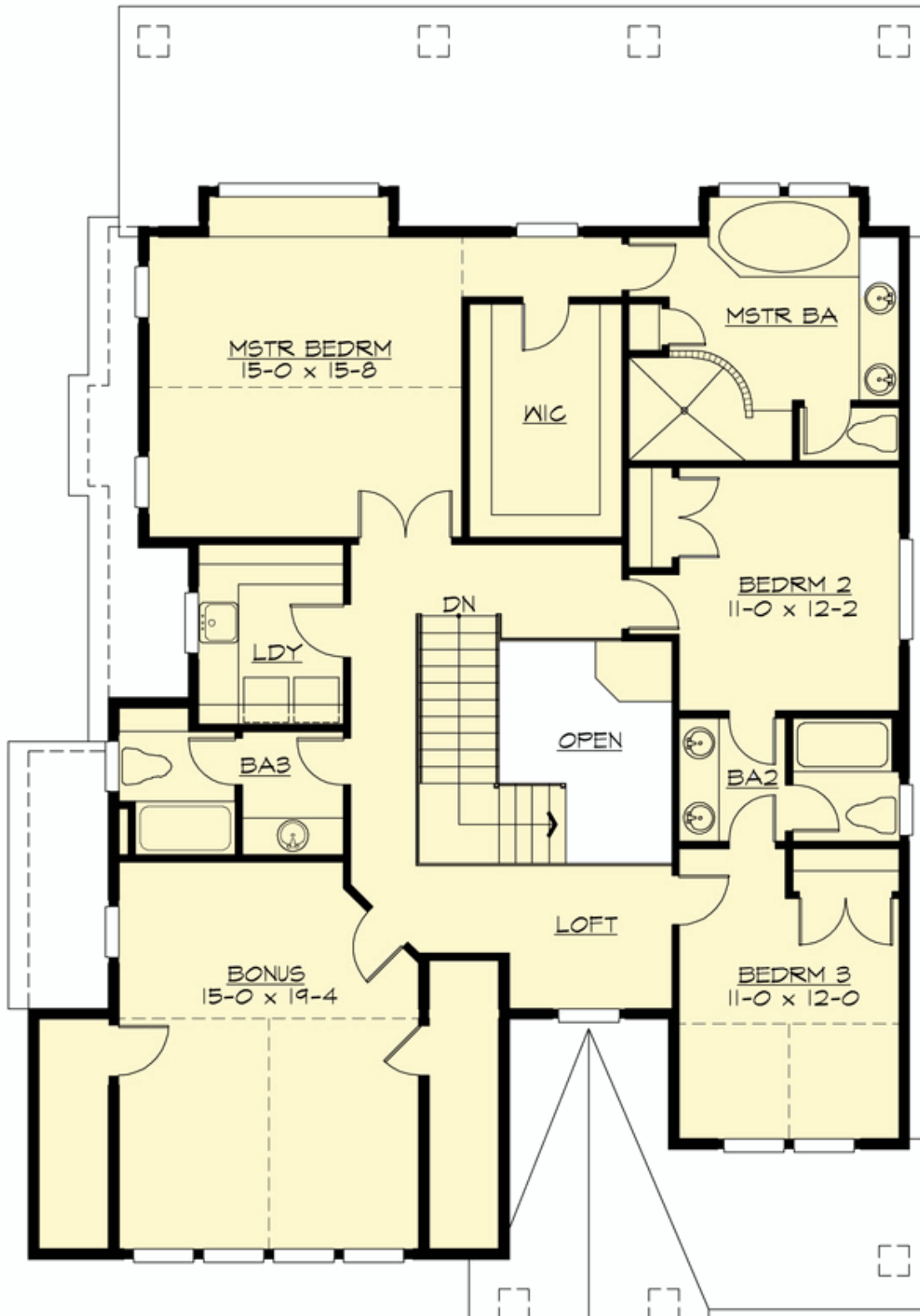
MAIN FLOOR





## WOODLAND MEADOWS - PLAN M2823A2F-19

### UPPER FLOOR





## WOODLAND MEADOWS - PLAN M2823A2F-19

### PLAN DETAILS

#### Area Summary

Total Area: 3218 sq. ft.  
Main Floor: 1432 sq. ft.  
Upper Floor: 1786 sq. ft.  
Garage Floor: 583 sq. ft.

#### General Information

Stories: 2  
Width: 44'-0"  
Depth: 64'-6"  
Height: 24'-6"

#### Architectural Style

Hampton  
Shingle  
Traditional

#### Number of Rooms

Bedrooms: 3  
Full Baths: 3  
Half Baths: 1

#### Garage

Garage Size: 2  
Garage Door Location: Front

#### Roof Pitches

Primary: 9:12  
Secondary: 4:12

#### Wall Heights

Main: 9'-0"  
Upper: 8'-0"  
3rd Floor: 0'-0"  
Lower: 0'-0"

#### Foundation Type

Crawl Space

#### Roof Framing

Trusses

#### Floor Load

Live (lbs): 40 PSF  
Dead (lbs): 10 PSF

#### Roof Load

Live (lbs): 25 PSF  
Dead (lbs): 15 PSF  
Wind: 85 MPH

#### Design Features

- Bonus Space @ Upper Floor
- Den/Office
- Front and Rear Porch
- Great Room
- Laundry Room @ Upper Floor
- Master Bedroom @ Upper Floor Rear
- Narrow Lot
- Small Plan