

## HANOVER - PLAN M2727A2F-0PB

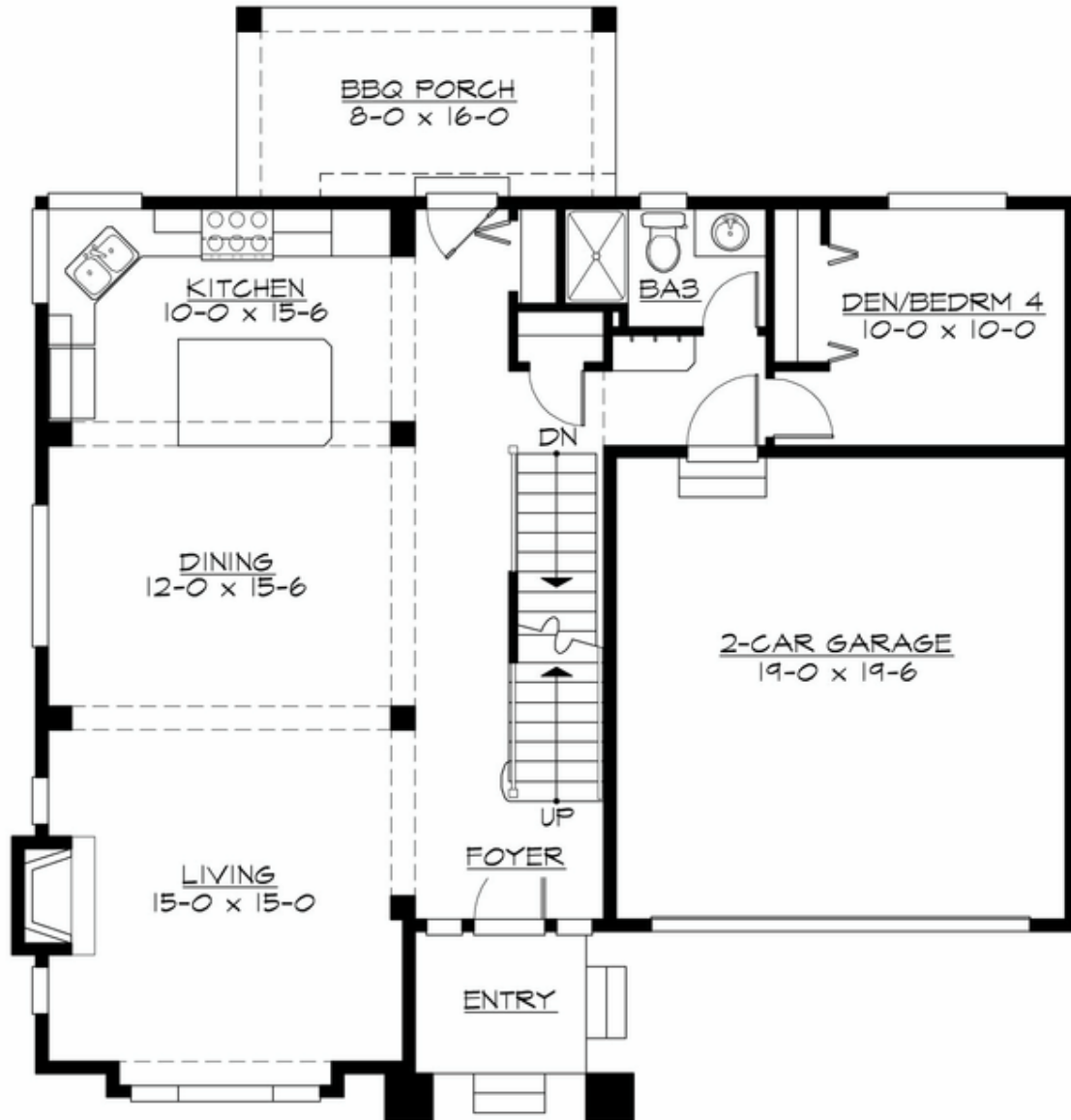
Total Area: 2727 sq. ft.  
Garage Area: 390 sq. ft.  
Garage Area: 390 sq. ft.  
Garage Size: 2  
Stories: 3  
Bedrooms: 5  
Full Baths: 4  
Width: 44'-0"  
Depth: 47'-0"  
Height: 27'-6"  
Foundation: Daylight Basement



**Plan beautifully built by JayMarc Homes**

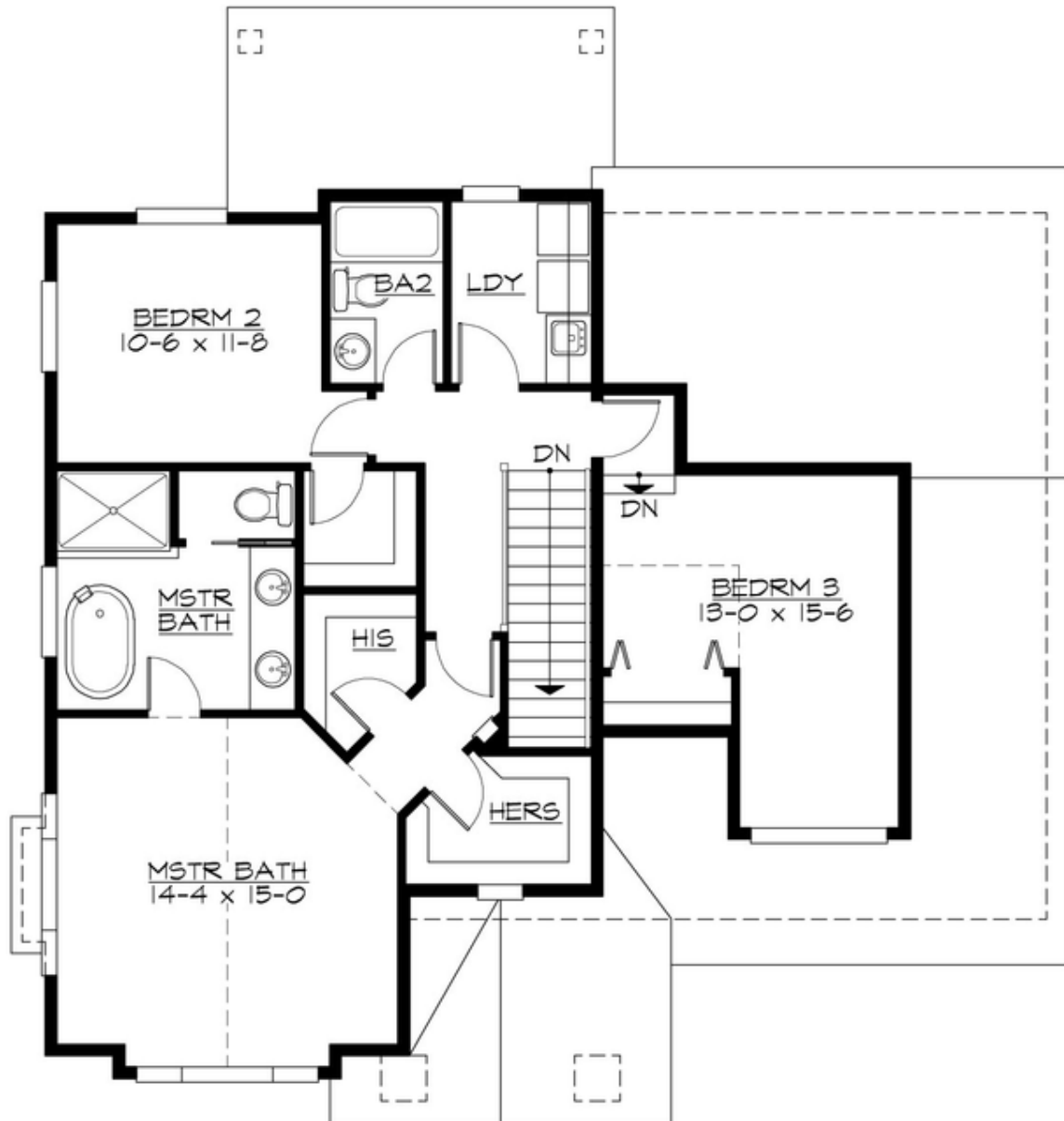
## HANOVER - PLAN M2727A2F-0PB

### MAIN FLOOR



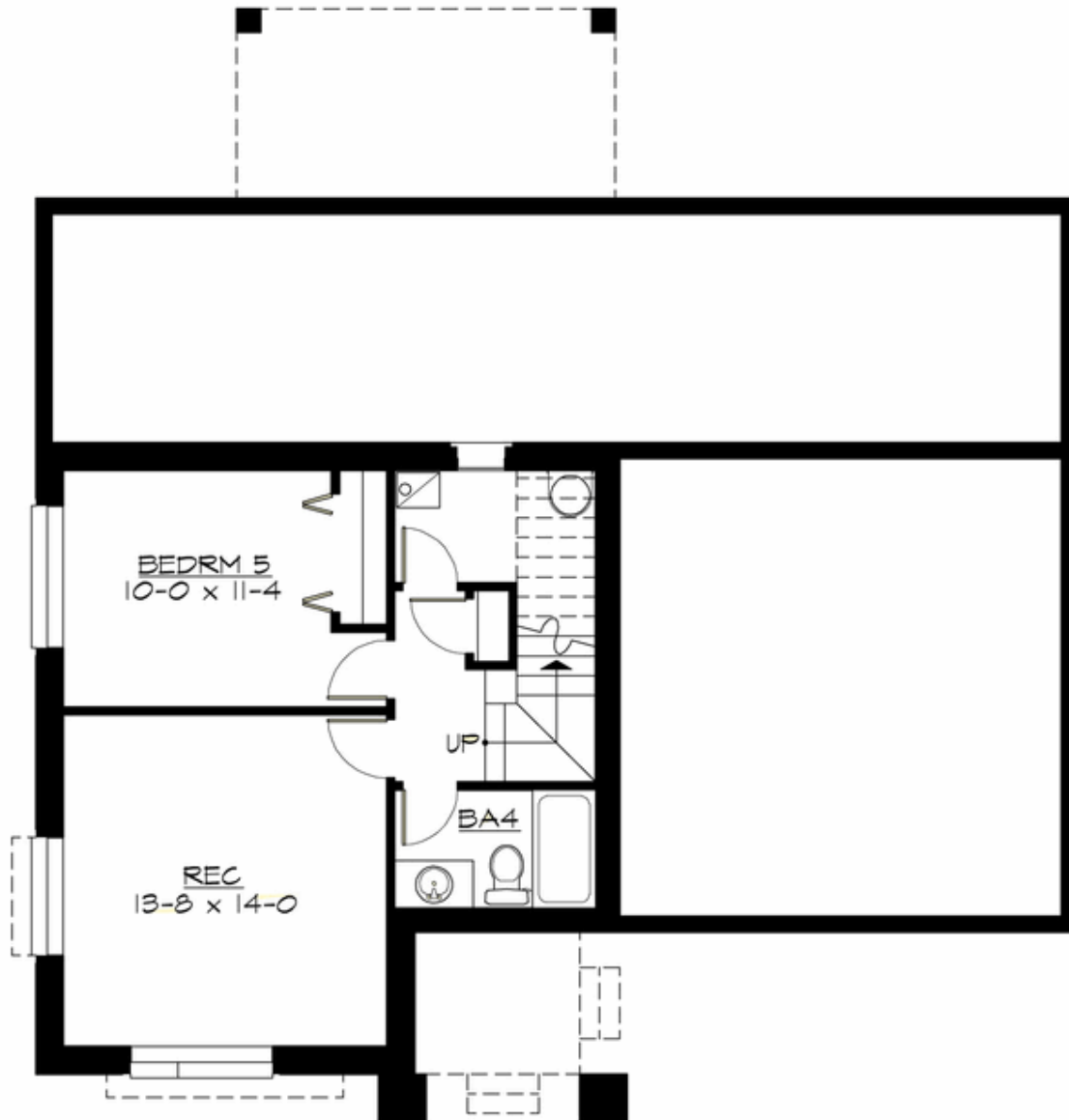
## HANOVER - PLAN M2727A2F-0PB

### UPPER FLOOR



**HANOVER - PLAN M2727A2F-0PB**

**LOWER FLOOR**



## HANOVER - PLAN M2727A2F-0PB

### PLAN DETAILS

#### Area Summary

Total Area:	2727 sq. ft.
Main Floor:	1035 sq. ft.
Upper Floor:	1085 sq. ft.
Lower Floor:	607 sq. ft.
Garage Floor:	390 sq. ft.

#### General Information

Stories:	3
Width:	44'-0"
Depth:	47'-0"
Height:	27'-6"

#### Architectural Style

Craftsman  
Northwest  
Shingle

#### Number of Rooms

Bedrooms:	5
Full Baths:	4

#### Garage

Garage Size:	2
Garage Door Location:	Front

#### Roof Pitches

Primary:	6:12
Secondary:	4:12

#### Wall Heights

Main:	10'-0"
Upper:	9'-0"
3rd Floor:	0'-0"
Lower:	9'-0"

#### Foundation Type

Daylight Basement

#### Roof Framing

Trusses

#### Floor Load

Live (lbs):	40 PSF
Dead (lbs):	10 PSF

#### Roof Load

Live (lbs):	25 PSF
Dead (lbs):	15 PSF
Wind:	85 MPH

#### Design Features

- Bonus Space @ Lower Floor
- Front and Rear Porch
- Great Room
- Laundry Room @ Upper Floor
- Master Bedroom @ Upper Floor Front