

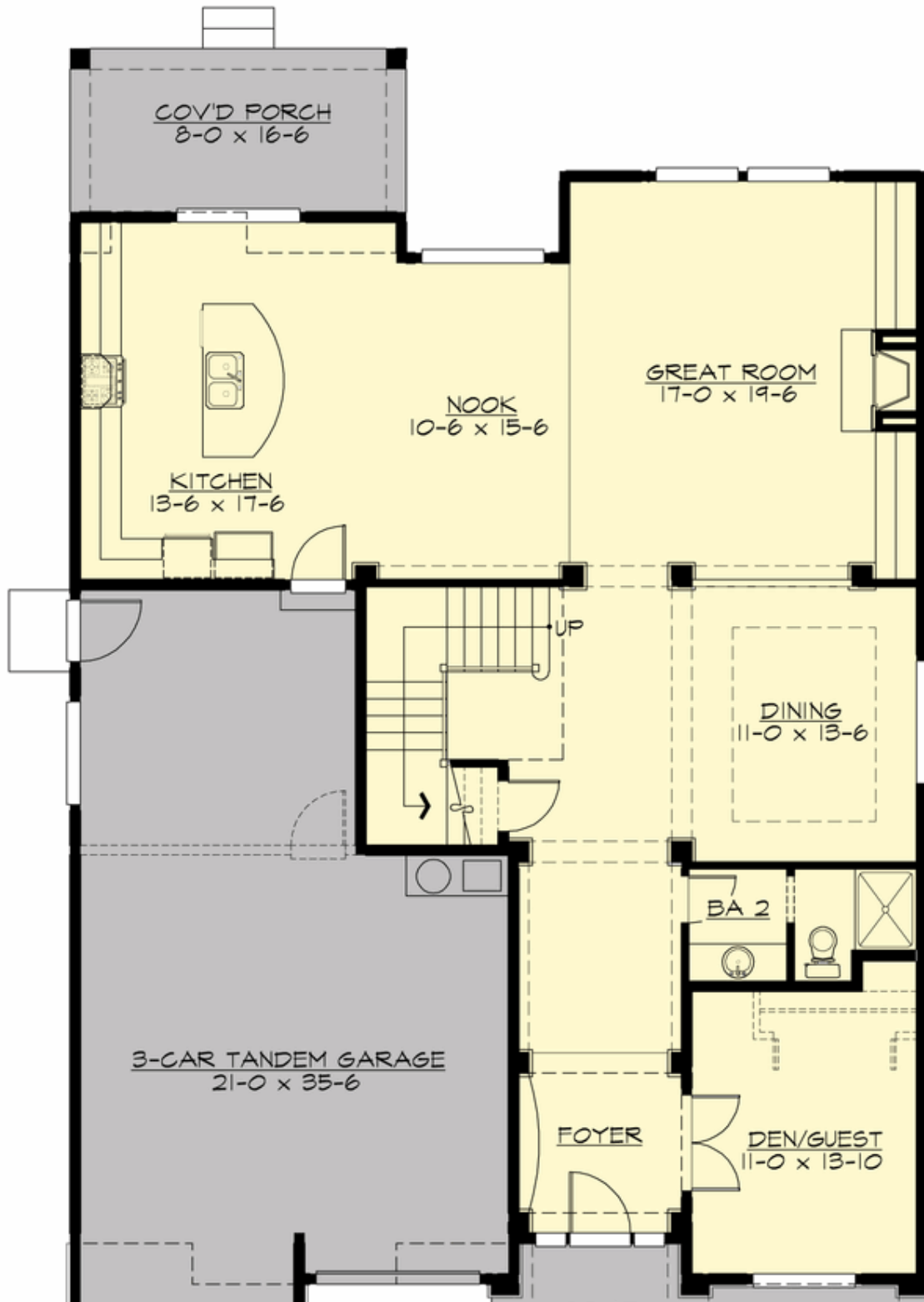
## BRONSON - PLAN M3582C3FT-1R

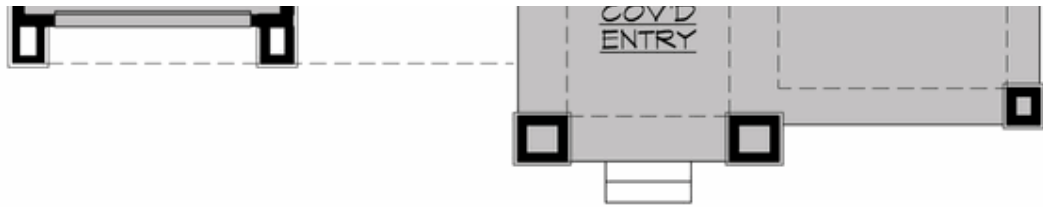
Total Area: 3570 sq. ft.  
Garage Area: 658 sq. ft.  
Garage Area: 658 sq. ft.  
Garage Size: 3  
Stories: 2  
Bedrooms: 4  
Full Baths: 4  
Width: 42'-0"  
Depth: 66'-6"  
Height: 27'-6"  
Foundation: Crawl Space



## BRONSON - PLAN M3582C3FT-1R

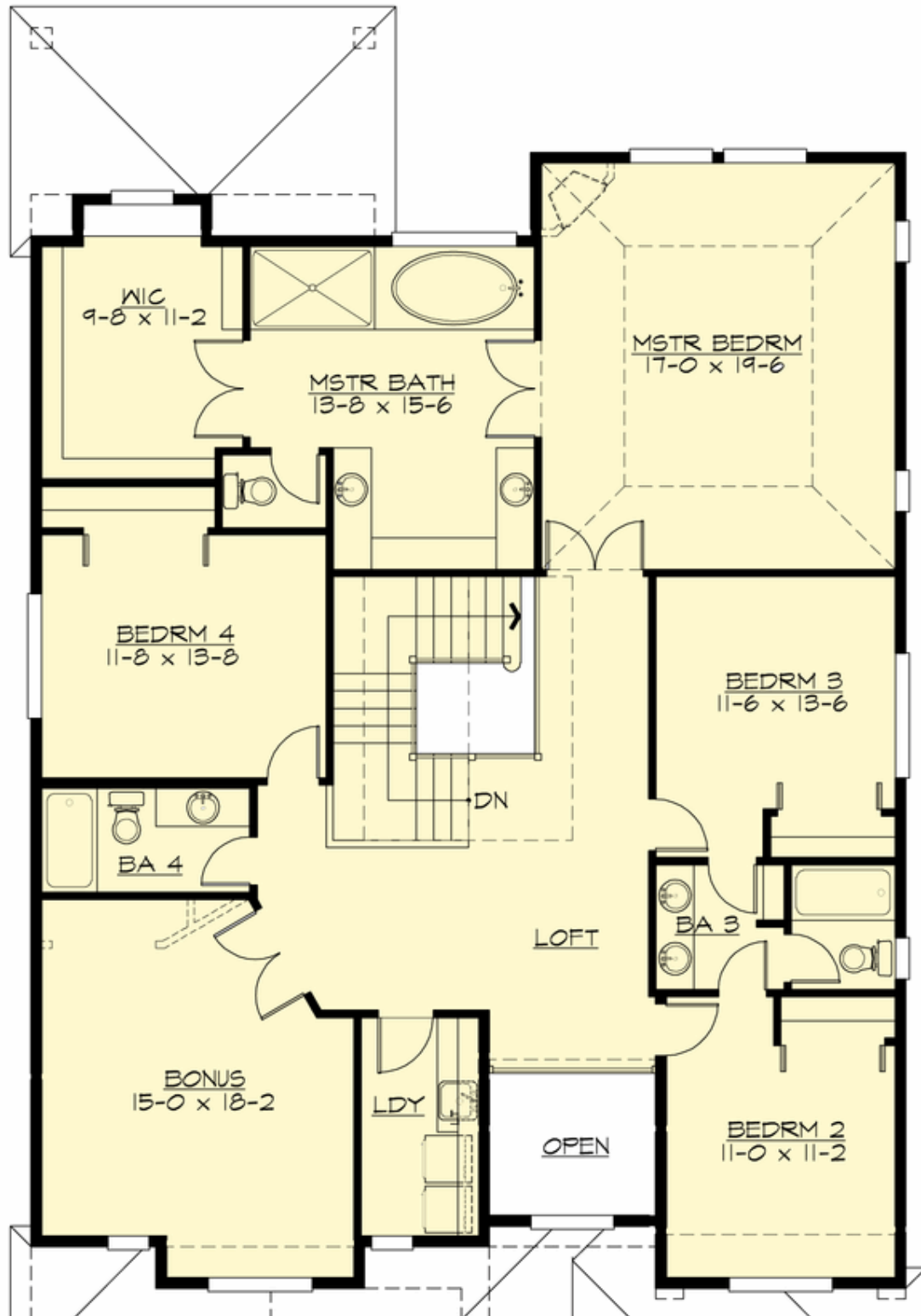
### MAIN FLOOR

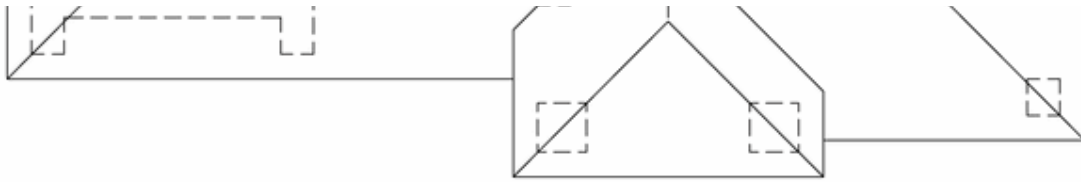




**BRONSON - PLAN M3582C3FT-1R**

**UPPER FLOOR**





## BRONSON - PLAN M3582C3FT-1R

### PLAN DETAILS

#### Area Summary

Total Area: 3570 sq. ft.  
Main Floor: 1576 sq. ft.  
Upper Floor: 1994 sq. ft.  
Garage Floor: 658 sq. ft.

#### General Information

Stories: 2  
Width: 42'-0"  
Depth: 66'-6"  
Height: 27'-6"

#### Architectural Style

Craftsman  
Shingle  
Traditional

#### Number of Rooms

Bedrooms: 4  
Full Baths: 4

#### Garage

Garage Size: 3  
Garage Door Location: Front  
Garage Type: Tandem

#### Roof Pitches

Primary: 4:12  
Secondary: 3:12

#### Wall Heights

Main: 9'-0"  
Upper: 9'-0"  
3rd Floor: 0'-0"  
Lower: 0'-0"

#### Foundation Type

Crawl Space

#### Roof Framing

Trusses

#### Floor Load

Live (lbs): 40 PSF  
Dead (lbs): 10 PSF

#### Roof Load

Live (lbs): 25 PSF  
Dead (lbs): 15 PSF  
Wind: 85 MPH

#### Design Features

- Bonus Space @ Upper Floor
- Den/Office
- Front and Rear Porch
- Great Room
- Laundry Room @ Upper Floor
- Master Bedroom @ Upper Floor Rear
- Narrow Lot
- View Lot - Rear