

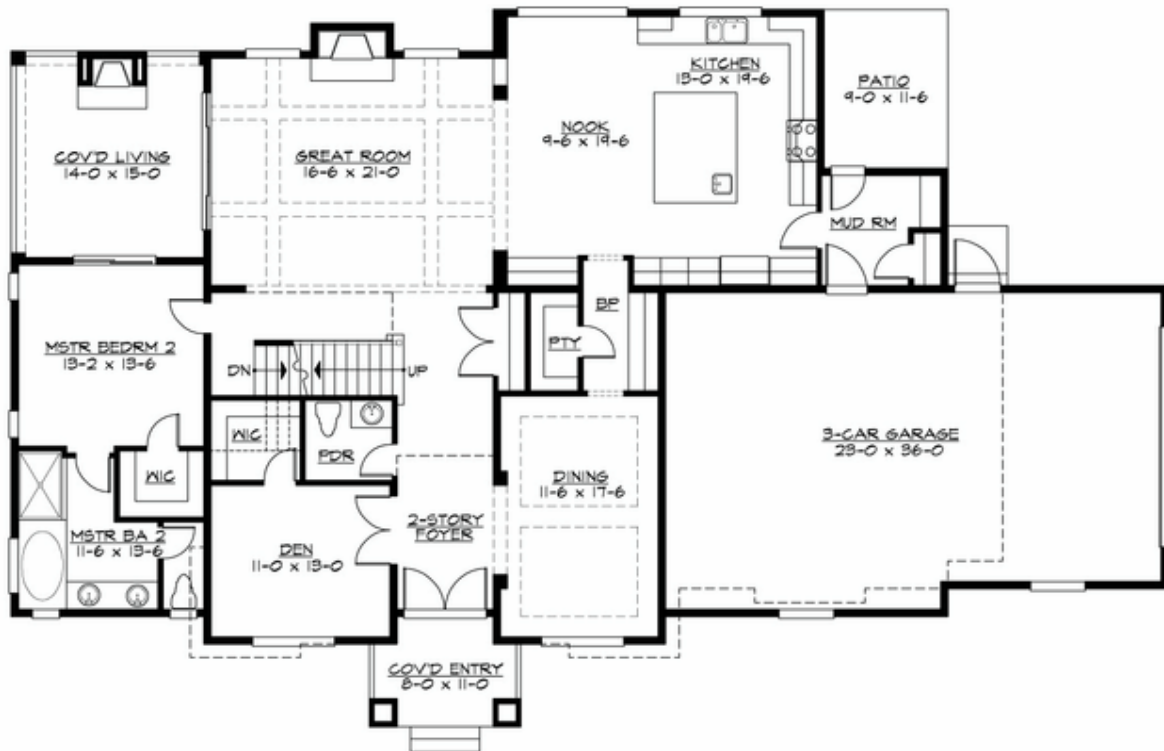
## STONINGTON - PLAN M4061A4ST-0DB

Total Area: 5450 sq. ft.  
Garage Area: 883 sq. ft.  
Garage Area: 883 sq. ft.  
Garage Size: 4  
Stories: 3  
Bedrooms: 5  
Full Baths: 5  
Half Baths: 1  
Width: 84'-0"  
Depth: 52'-0"  
Height: 30'-6"  
Foundation: Daylight Basement



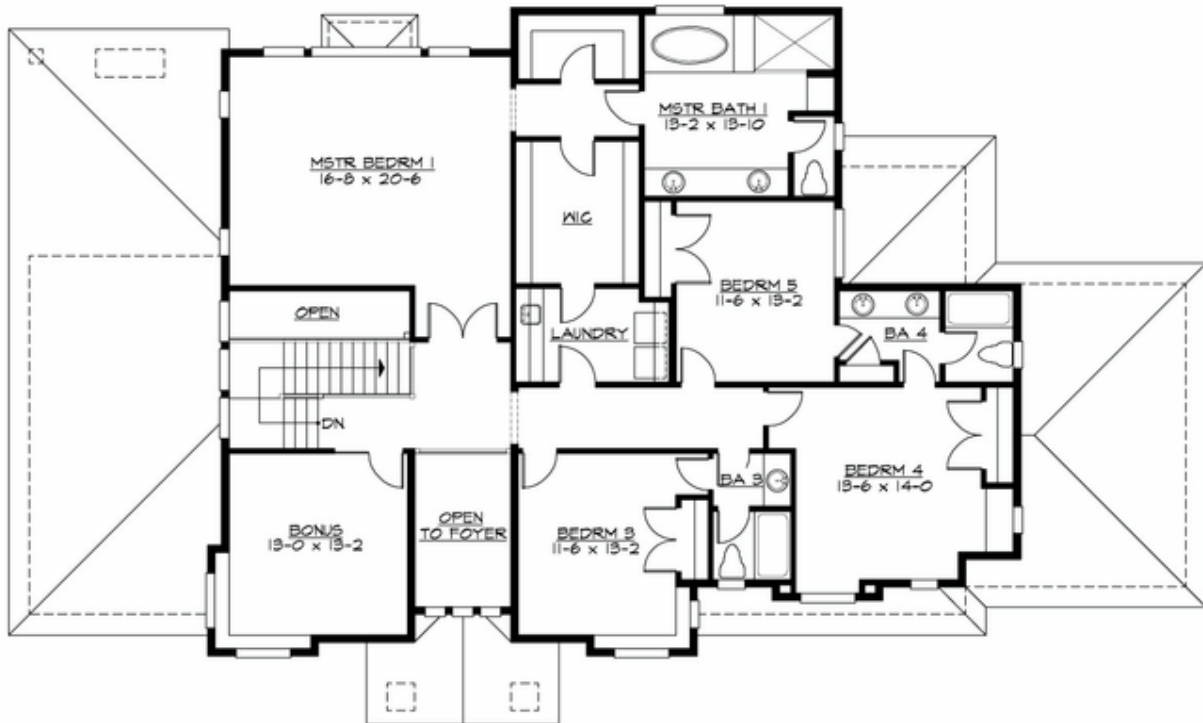
## STONINGTON - PLAN M4061A4ST-0DB

### MAIN FLOOR



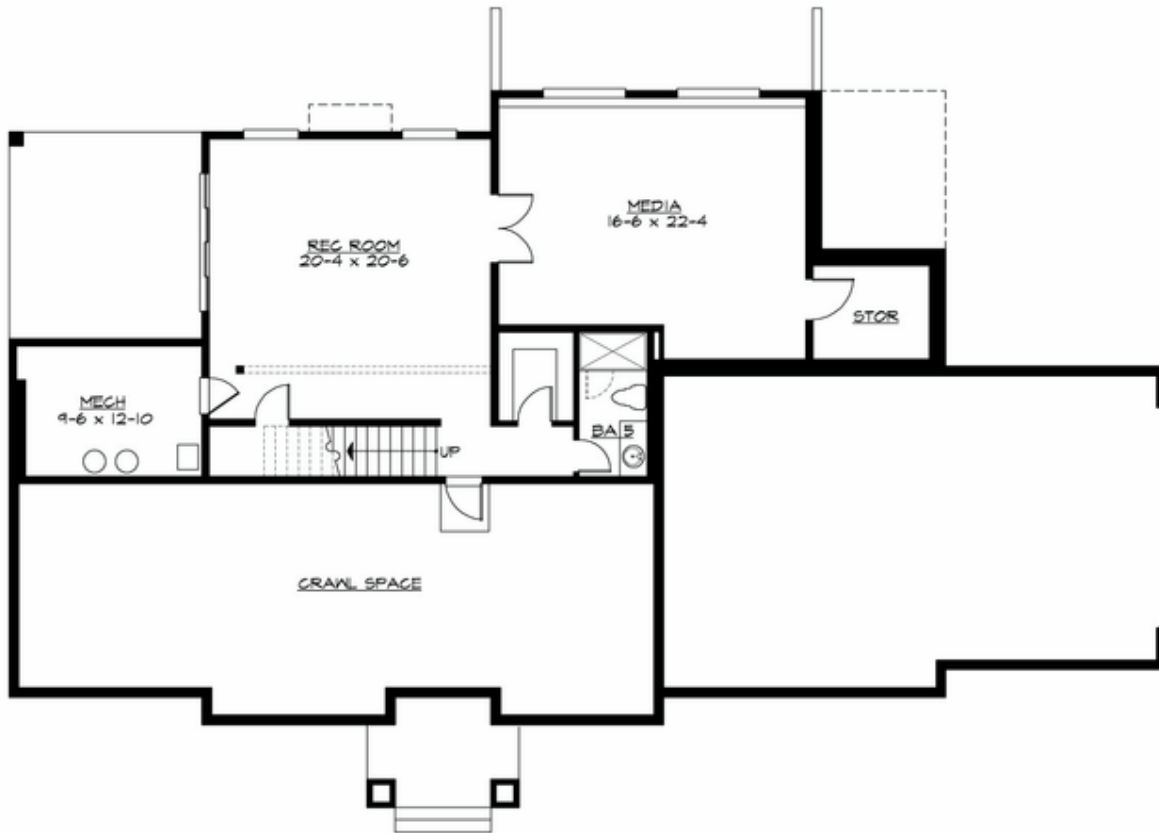
**STONINGTON - PLAN M4061A4ST-0DB**

**UPPER FLOOR**



**STONINGTON - PLAN M4061A4ST-0DB**

**LOWER FLOOR**





## STONINGTON - PLAN M4061A4ST-0DB

### PLAN DETAILS

#### Area Summary

Total Area: 5450 sq. ft.  
Main Floor: 2072 sq. ft.  
Upper Floor: 2020 sq. ft.  
Lower Floor: 1358 sq. ft.  
Garage Floor: 883 sq. ft.

#### General Information

Stories: 3  
Width: 84'-0"  
Depth: 52'-0"  
Height: 30'-6"

#### Architectural Style

Craftsman  
Northwest  
Shingle

#### Number of Rooms

Bedrooms: 5  
Full Baths: 5  
Half Baths: 1

#### Garage

Garage Size: 4  
Garage Door Location: Side  
Garage Type: Tandem

#### Roof Pitches

Primary: 6:12  
Secondary: 4:12

#### Wall Heights

Main: 10'-0"  
Upper: 9'-0"  
3rd Floor: 0'-0"  
Lower: 9'-0"

#### Foundation Type

Daylight Basement

#### Roof Framing

Trusses

#### Floor Load

Live (lbs): 40 PSF  
Dead (lbs): 10 PSF

#### Roof Load

Live (lbs): 25 PSF  
Dead (lbs): 15 PSF  
Wind: 85 MPH

#### Design Features

- Bonus Space @ Upper Floor & Lower Floor
- Den/Office
- Front and Rear Porch
- Great Room
- Laundry Room @ Upper Floor
- Master Bedroom @ Upper Floor Rear
- View Lot - Rear
- Wide Lot