

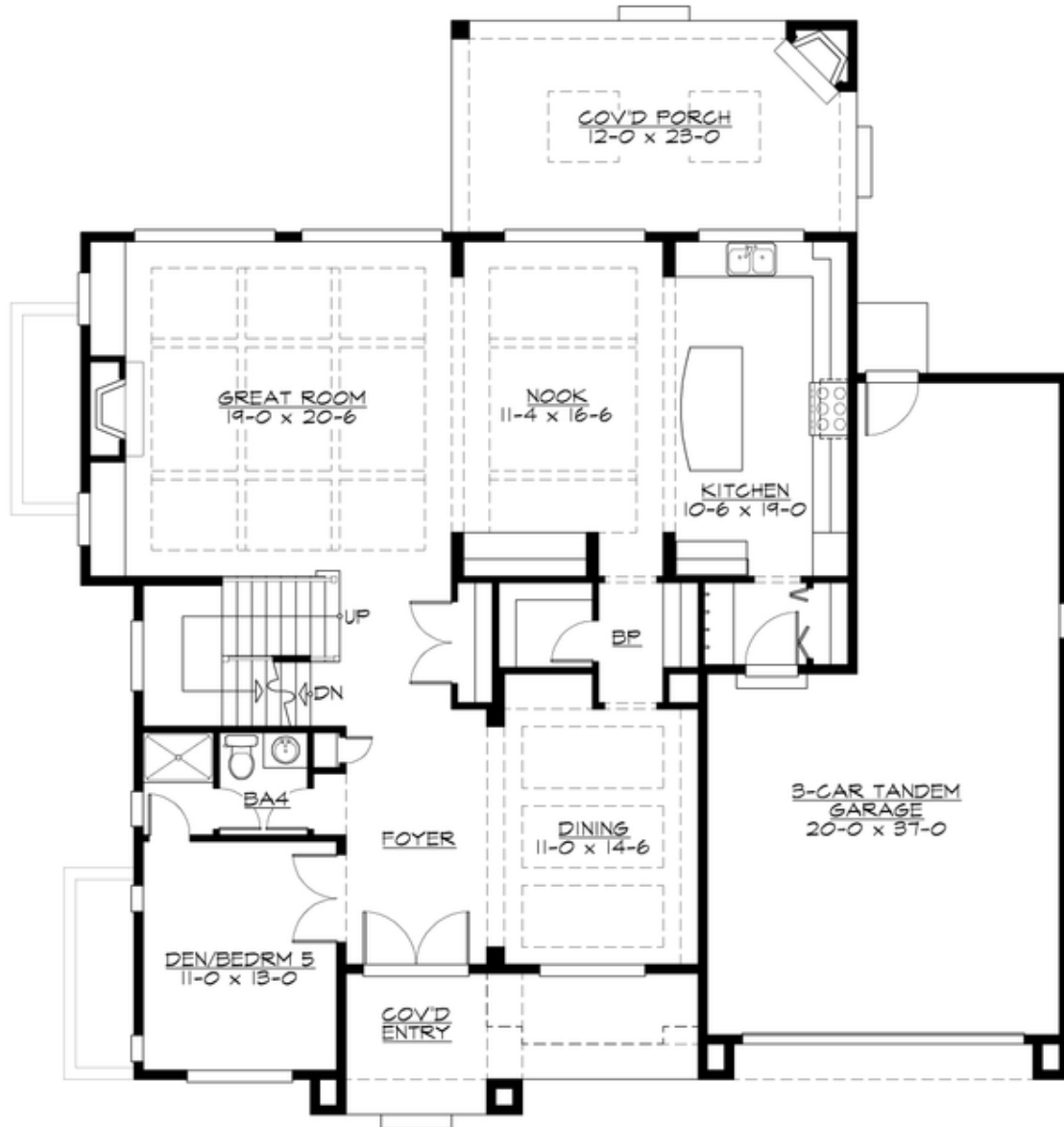
## CRENSHAW - PLAN M5386A3FT-0FB

Total Area: 5386 sq. ft.  
Garage Area: 636 sq. ft.  
Garage Area: 636 sq. ft.  
Garage Size: 3  
Stories: 3  
Bedrooms: 6  
Full Baths: 5  
Width: 56'-0"  
Depth: 62'-0"  
Height: 27'-6"  
Foundation: Cellar Basement



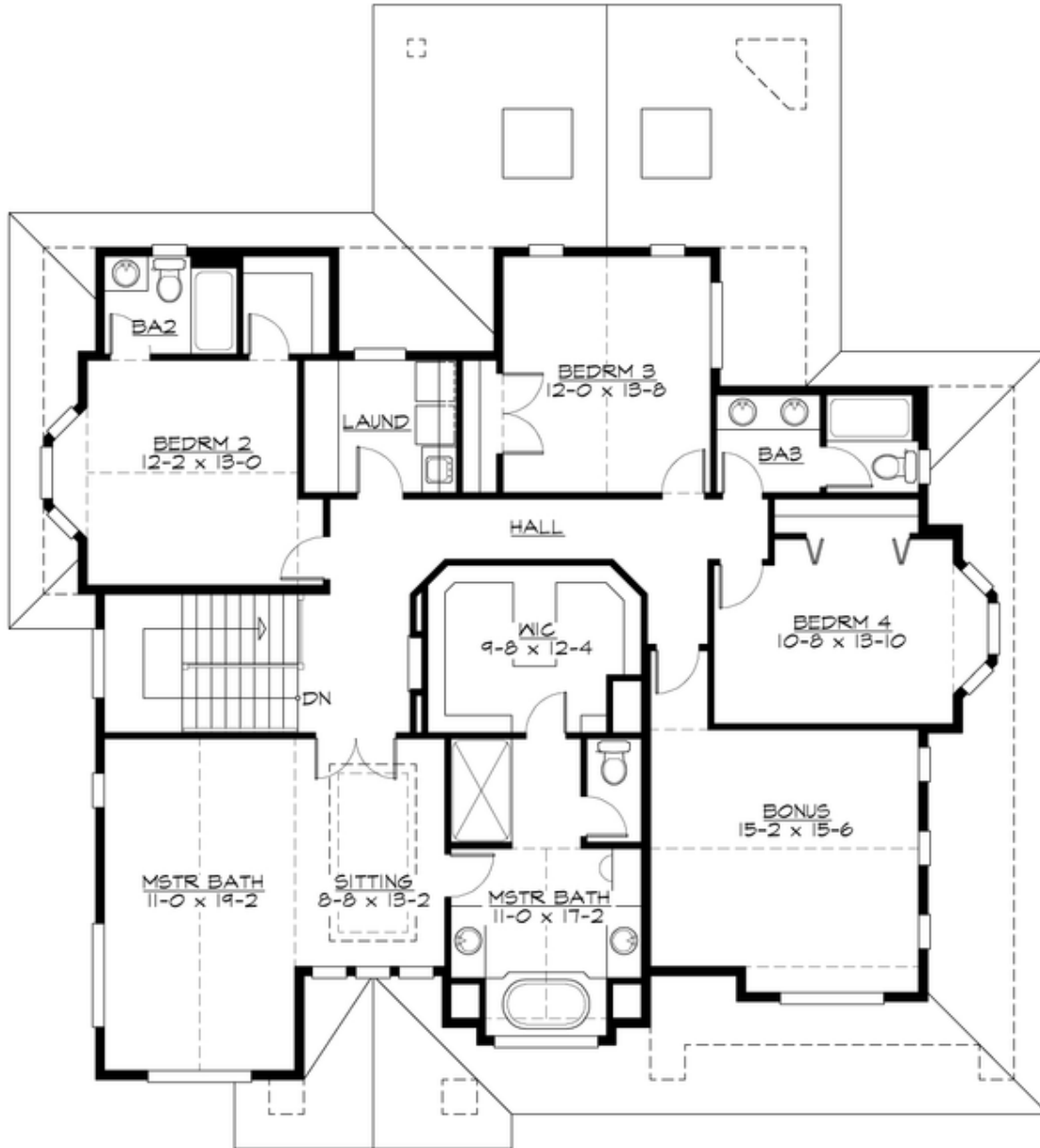
**CRENSHAW - PLAN M5386A3FT-0FB**

**MAIN FLOOR**



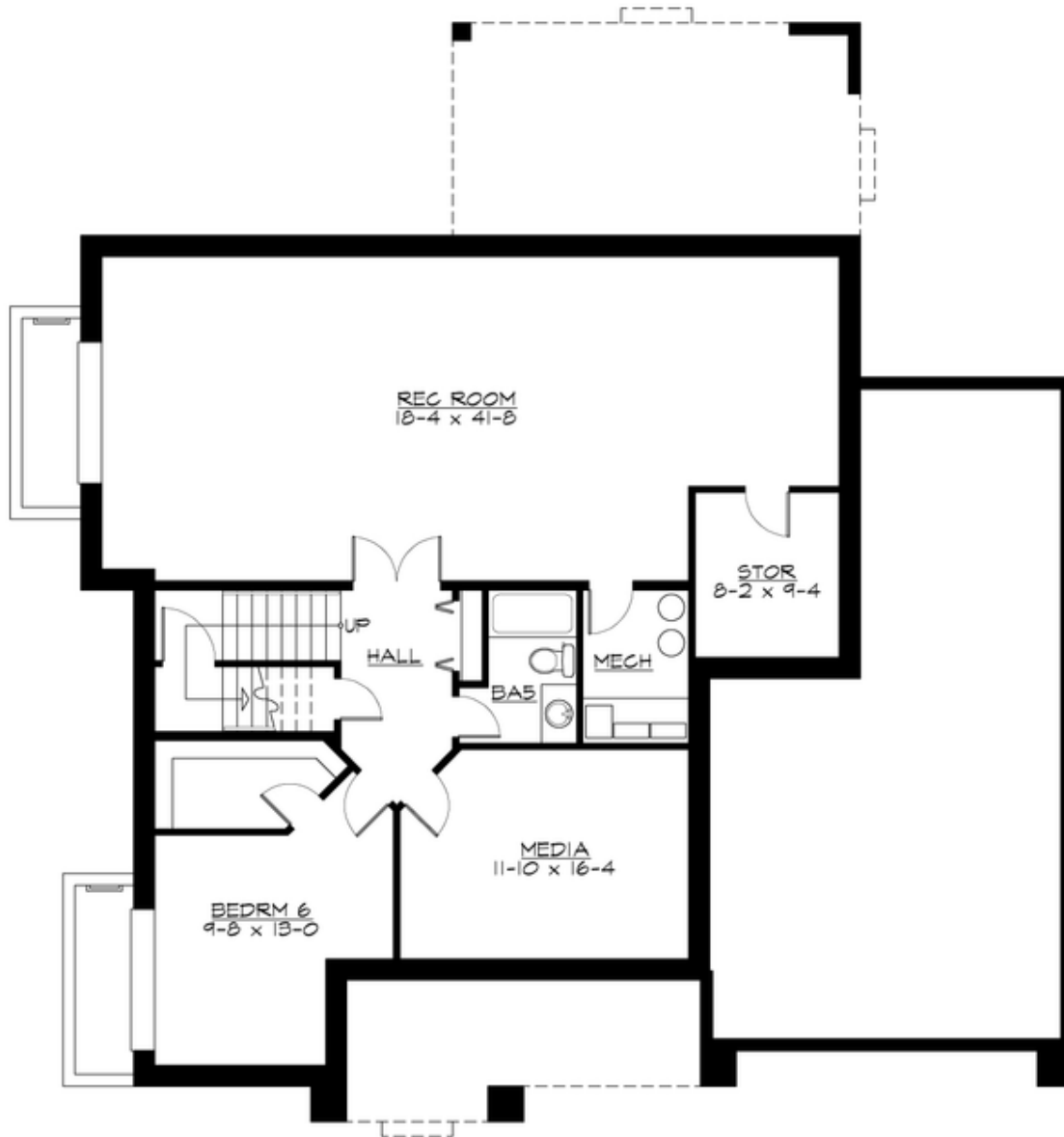
## CRENSHAW - PLAN M5386A3FT-0FB

### UPPER FLOOR



**CRENSHAW - PLAN M5386A3FT-0FB**

**LOWER FLOOR**





## CRENSHAW - PLAN M5386A3FT-0FB

### PLAN DETAILS

#### Area Summary

Total Area: 5386 sq. ft.  
Main Floor: 1709 sq. ft.  
Upper Floor: 1967 sq. ft.  
Lower Floor: 1710 sq. ft.  
Garage Floor: 636 sq. ft.

#### General Information

Stories: 3  
Width: 56'-0"  
Depth: 62'-0"  
Height: 27'-6"

#### Architectural Style

Craftsman  
Northwest  
Traditional

#### Number of Rooms

Bedrooms: 6  
Full Baths: 5

#### Garage

Garage Size: 3  
Garage Door Location: Front  
Garage Type: Tandem

#### Roof Pitches

Primary: 6:12  
Secondary: 4:12

#### Wall Heights

Main: 10'-0"  
Upper: 9'-0"  
3rd Floor: 0'-0"  
Lower: 9'-0"

#### Foundation Type

Cellar Basement

#### Roof Framing

Trusses

#### Floor Load

Live (lbs): 40 PSF  
Dead (lbs): 10 PSF

#### Roof Load

Live (lbs): 25 PSF  
Dead (lbs): 15 PSF  
Wind: 85 MPH

#### Design Features

- Bonus Space @ Upper Floor & Lower Floor
- Front and Rear Porch
- Great Room
- Laundry Room @ Upper Floor
- Master Bedroom @ Upper Floor Front
- View Lot - Rear