

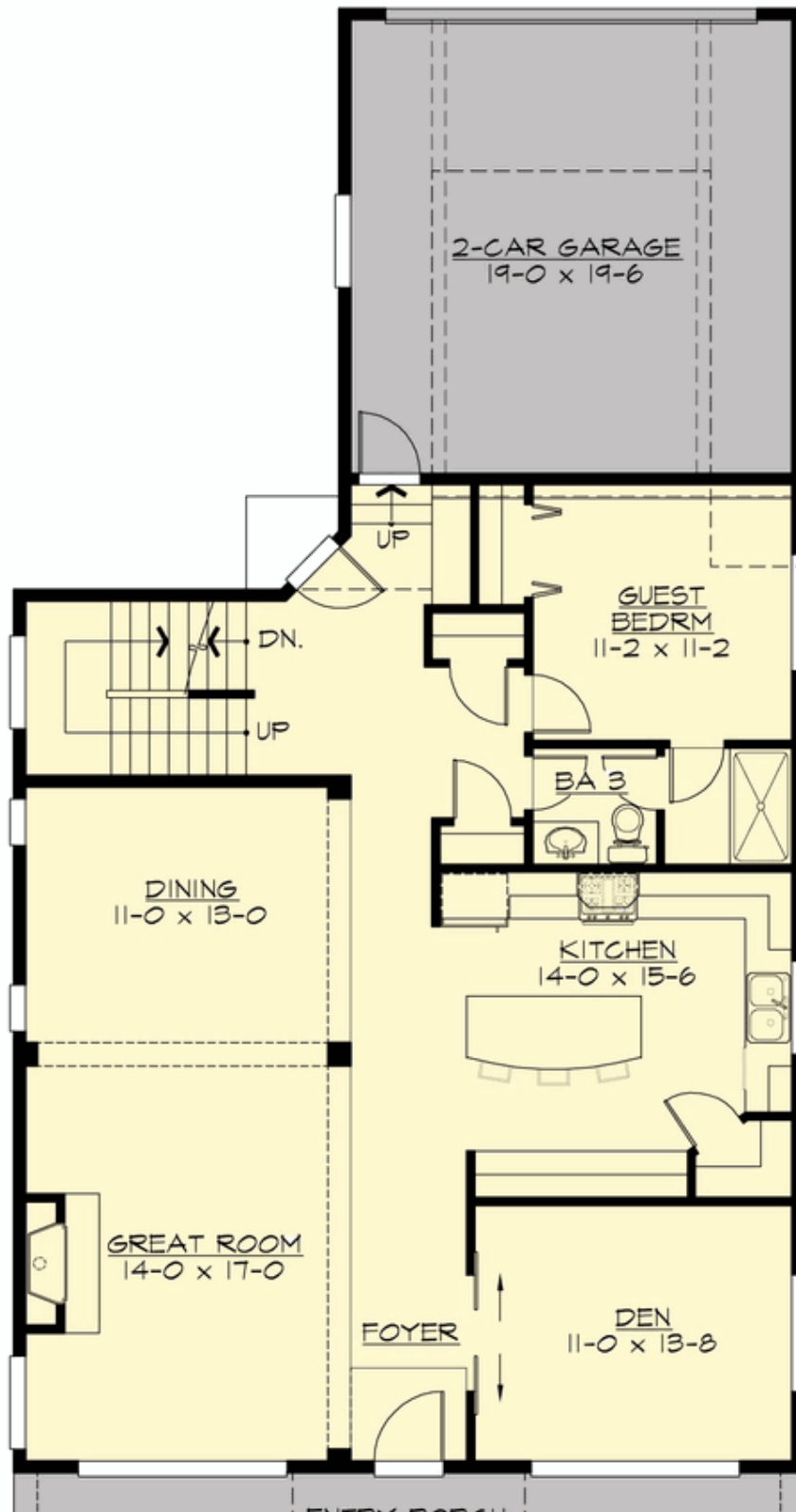
## DANBURY - PLAN M3784A2R-0FB

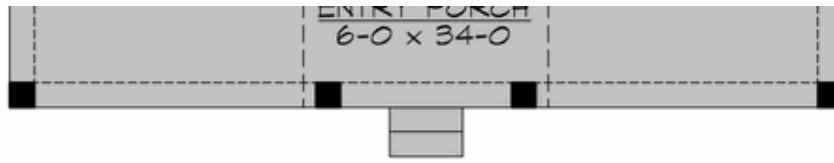
Total Area: 3784 sq. ft.  
Garage Area: 400 sq. ft.  
Garage Area: 400 sq. ft.  
Garage Size: 2  
Stories: 3  
Bedrooms: 5  
Full Baths: 4  
Width: 34'-0"  
Depth: 69'-0"  
Height: 25'-0"  
Foundation: Cellar Basement



**DANBURY - PLAN M3784A2R-0FB**

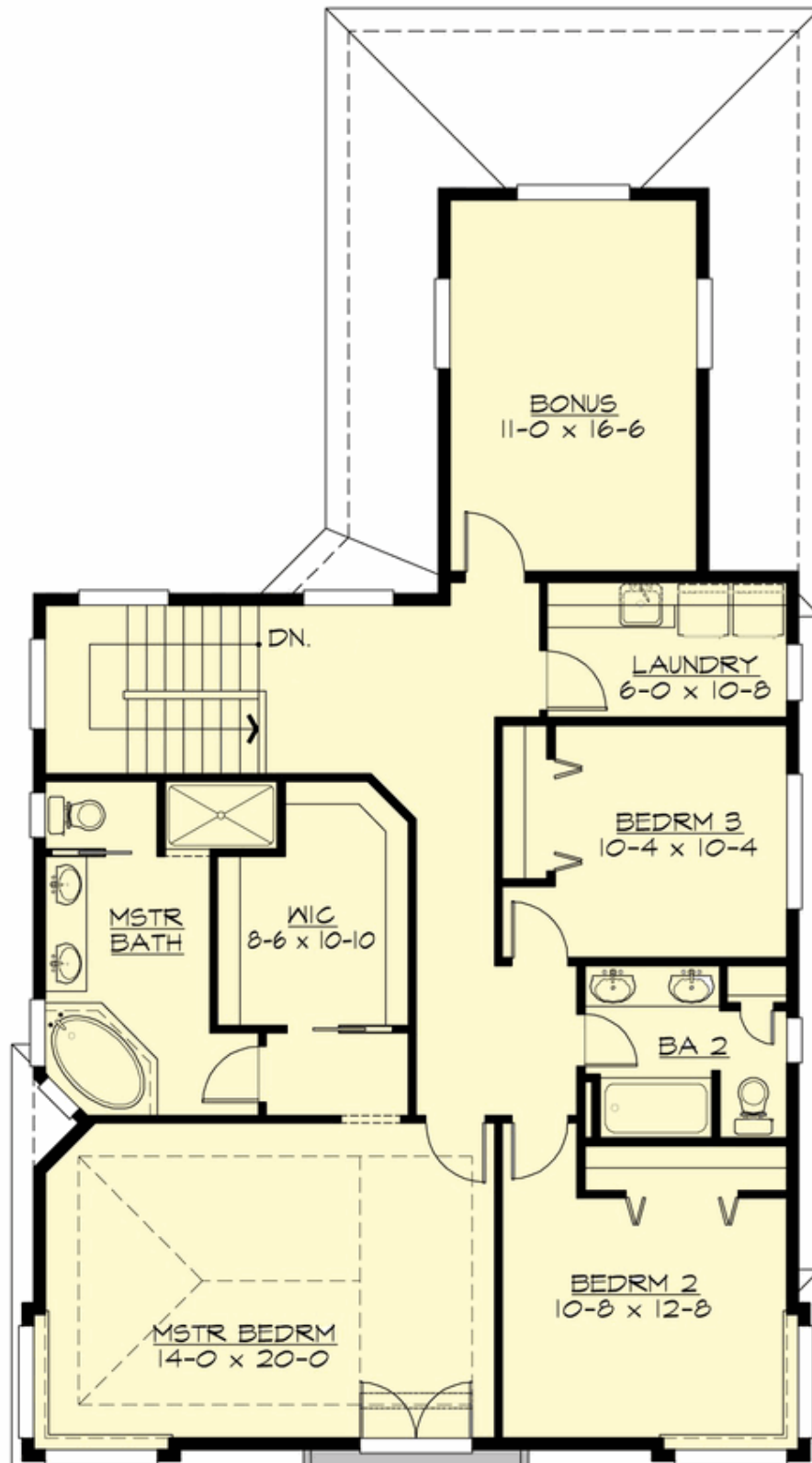
**MAIN FLOOR**

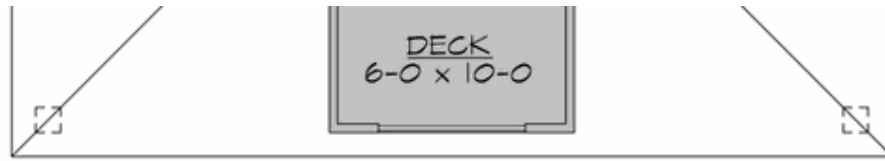




**DANBURY - PLAN M3784A2R-0FB**

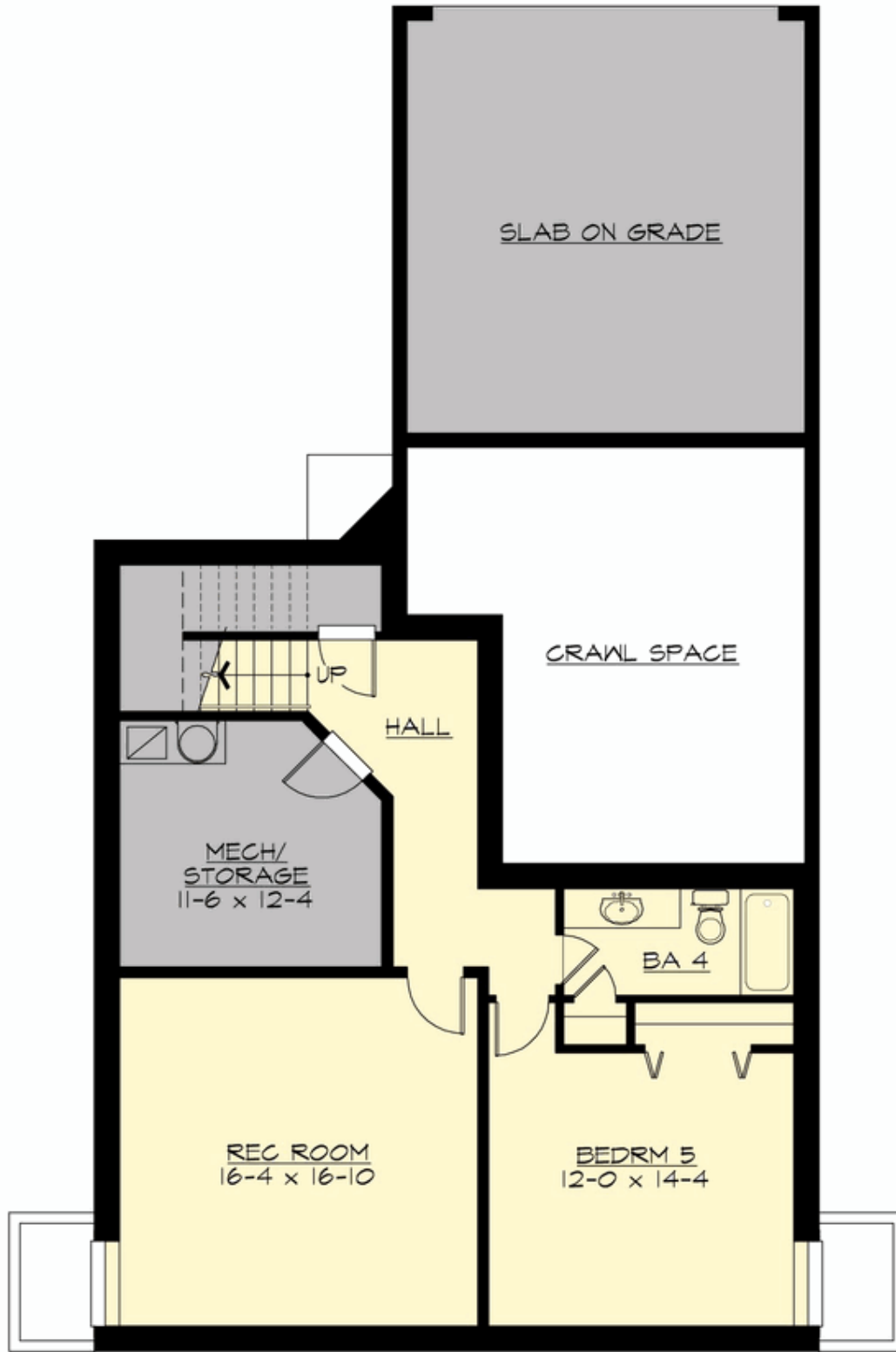
**UPPER FLOOR**





**DANBURY - PLAN M3784A2R-0FB**

**LOWER FLOOR**





## DANBURY - PLAN M3784A2R-0FB

### PLAN DETAILS

#### Area Summary

Total Area: 3784 sq. ft.  
Main Floor: 1395 sq. ft.  
Upper Floor: 1442 sq. ft.  
Lower Floor: 947 sq. ft.  
Garage Floor: 400 sq. ft.

#### General Information

Stories: 3  
Width: 34'-0"  
Depth: 69'-0"  
Height: 25'-0"

#### Architectural Style

Craftsman  
Farmhouse  
Shingle

#### Number of Rooms

Bedrooms: 5  
Full Baths: 4

#### Garage

Garage Size: 2  
Garage Door Location: Rear

#### Roof Pitches

Primary: 4:12

#### Wall Heights

Main: 9'-0"  
Upper: 8'-0"  
3rd Floor: 0'-0"  
Lower: 9'-0"

#### Foundation Type

Cellar Basement

#### Roof Framing

Trusses

#### Floor Load

Live (lbs): 40 PSF  
Dead (lbs): 10 PSF

#### Roof Load

Live (lbs): 25 PSF  
Dead (lbs): 15 PSF  
Wind: 85 MPH

#### Design Features

- Bonus Space @ Upper Floor & Lower Floor
- Den/Office
- Front Porch
- Great Room
- Laundry Room @ Upper Floor
- Master Bedroom @ Upper Floor Front
- Narrow Lot