

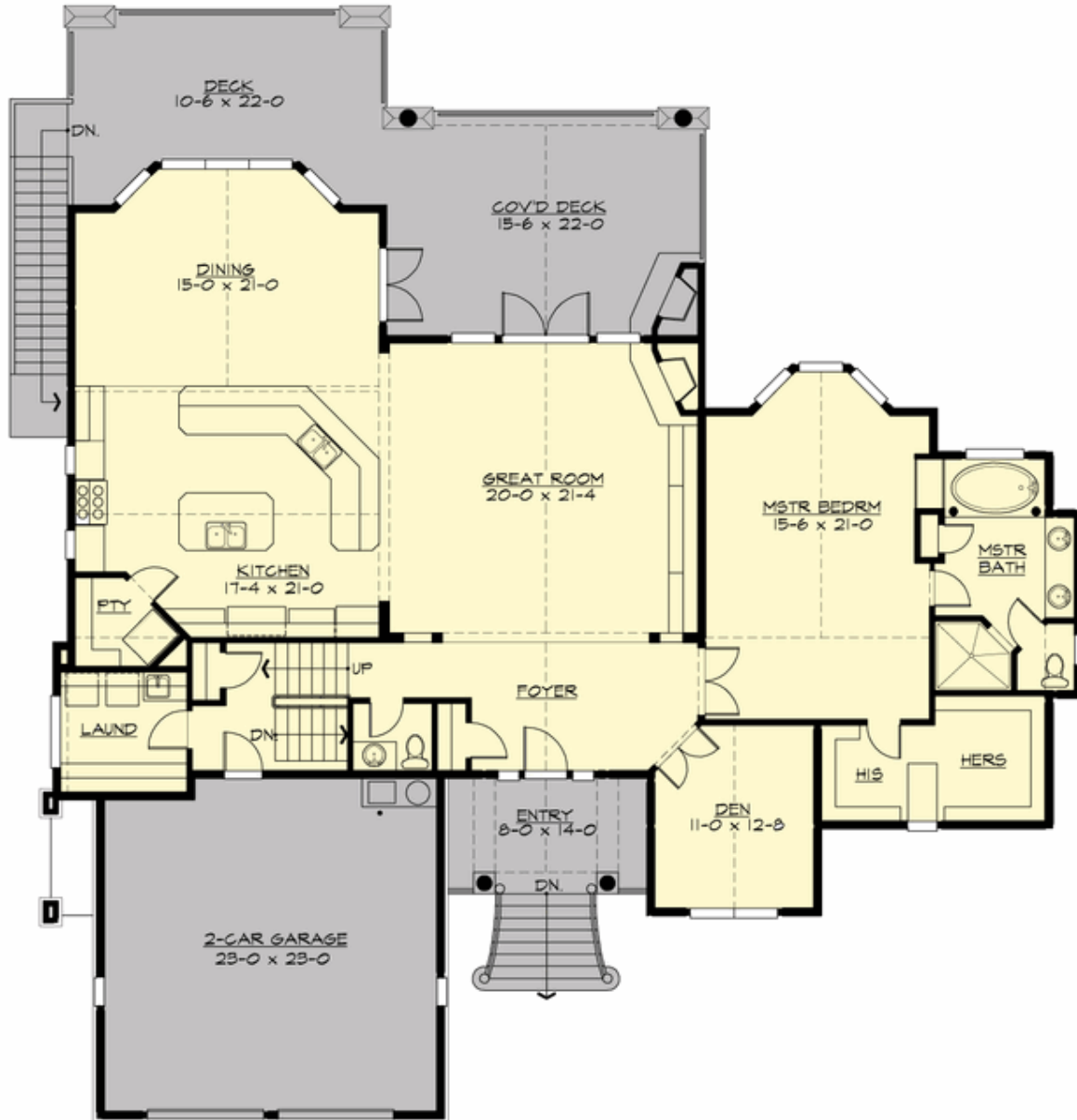
## **COSBEY - PLAN R3968A2F-0DB**

Total Area: 3917 sq. ft.  
Garage Area: 1331 sq. ft.  
Garage Area: 1331 sq. ft.  
Garage Size: 4  
Stories: 2  
Bedrooms: 3  
Full Baths: 3  
Half Baths: 1  
Width: 72'-0"  
Depth: 76'-4"  
Height: 19'-0"  
Foundation: Daylight Basement



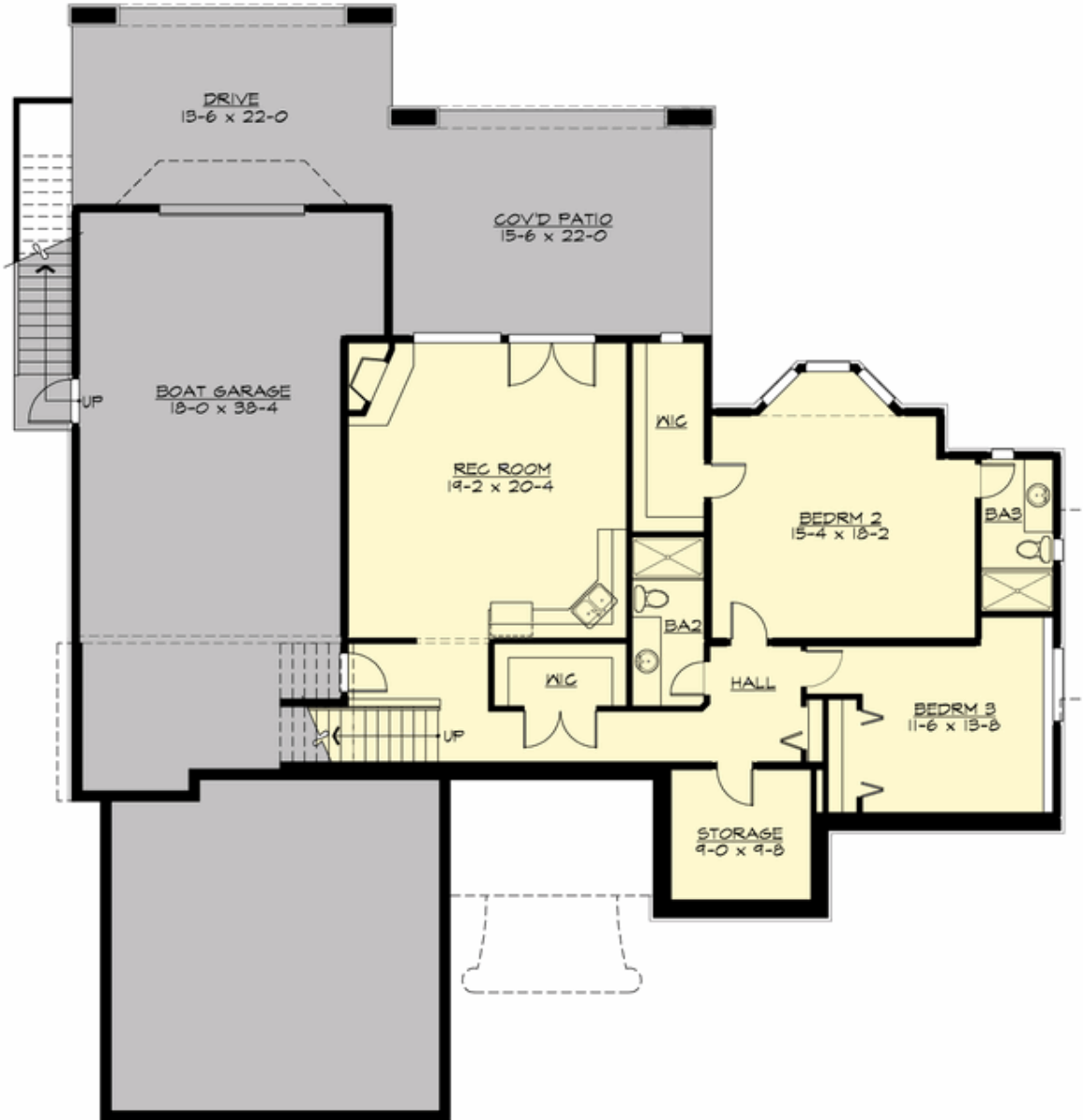
## COSBEY - PLAN R3968A2F-0DB

### MAIN FLOOR



## COSBEY - PLAN R3968A2F-0DB

### LOWER FLOOR





## COSBEY - PLAN R3968A2F-0DB

### PLAN DETAILS

#### Area Summary

Total Area: 3917 sq. ft.  
Main Floor: 2360 sq. ft.  
Lower Floor: 1557 sq. ft.  
Garage Floor: 1331 sq. ft.

#### General Information

Stories: 2  
Width: 72'-0"  
Depth: 76'-4"  
Height: 19'-0"

#### Architectural Style

Craftsman  
Hampton  
Shingle

#### Number of Rooms

Bedrooms: 3  
Full Baths: 3  
Half Baths: 1

#### Garage

Garage Size: 4  
Garage Door Location: Front  
Garage Type: TandemUnder

#### Roof Pitches

Primary: 4:12  
Secondary: 2:12

#### Wall Heights

Main: 10'-0"  
Upper: 0'-0"  
3rd Floor: 0'-0"  
Lower: 12'-0"

#### Foundation Type

Daylight Basement

#### Roof Framing

Combination

#### Floor Load

Live (lbs): 40 PSF  
Dead (lbs): 10 PSF

#### Roof Load

Live (lbs): 25 PSF  
Dead (lbs): 15 PSF  
Wind: 85 MPH

#### Design Features

- Bonus Space @ Lower Floor
- Den/Office
- Front and Rear Porch
- Great Room
- Laundry Room @ Main Floor
- Master Bedroom @ Main Floor Rear
- View Lot - Rear
- Wide Lot