

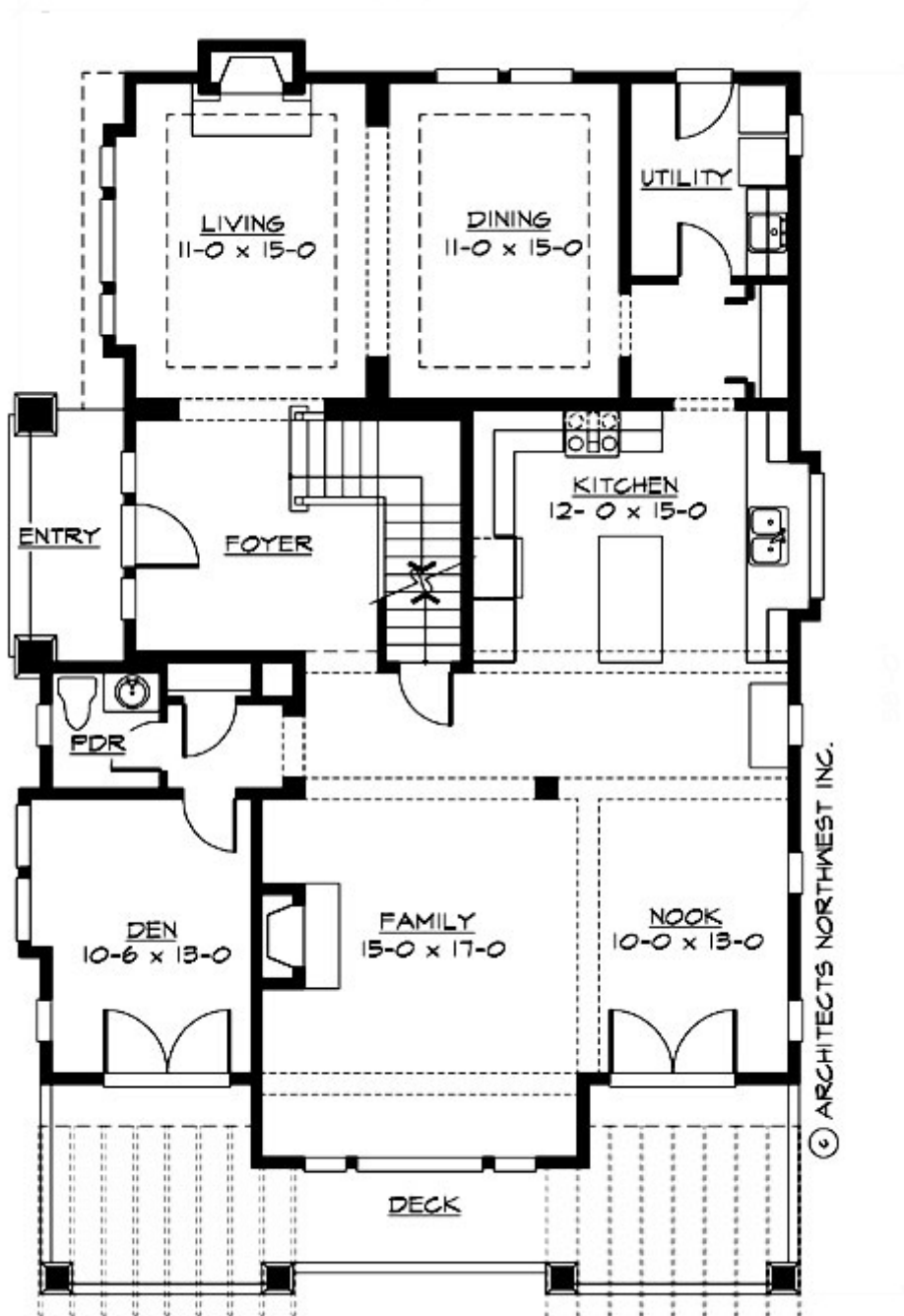
## **BLACKCOMB - M3375A3SU-0**

Total Area: **3375 Sq. Ft.**  
Garage Area: **966 Sq. Ft.**  
Garage Size: **3**  
Stories: **3**  
Bedrooms : **3**  
Full Baths : **2**  
Half Baths : **1**  
Width : **37`-0"**  
Depth : **58`-0"**  
Height : **24`-0"**  
Foundation : **Crawl Space**



# BLACKCOMB - M3375A3SU-0

## MAIN FLOOR

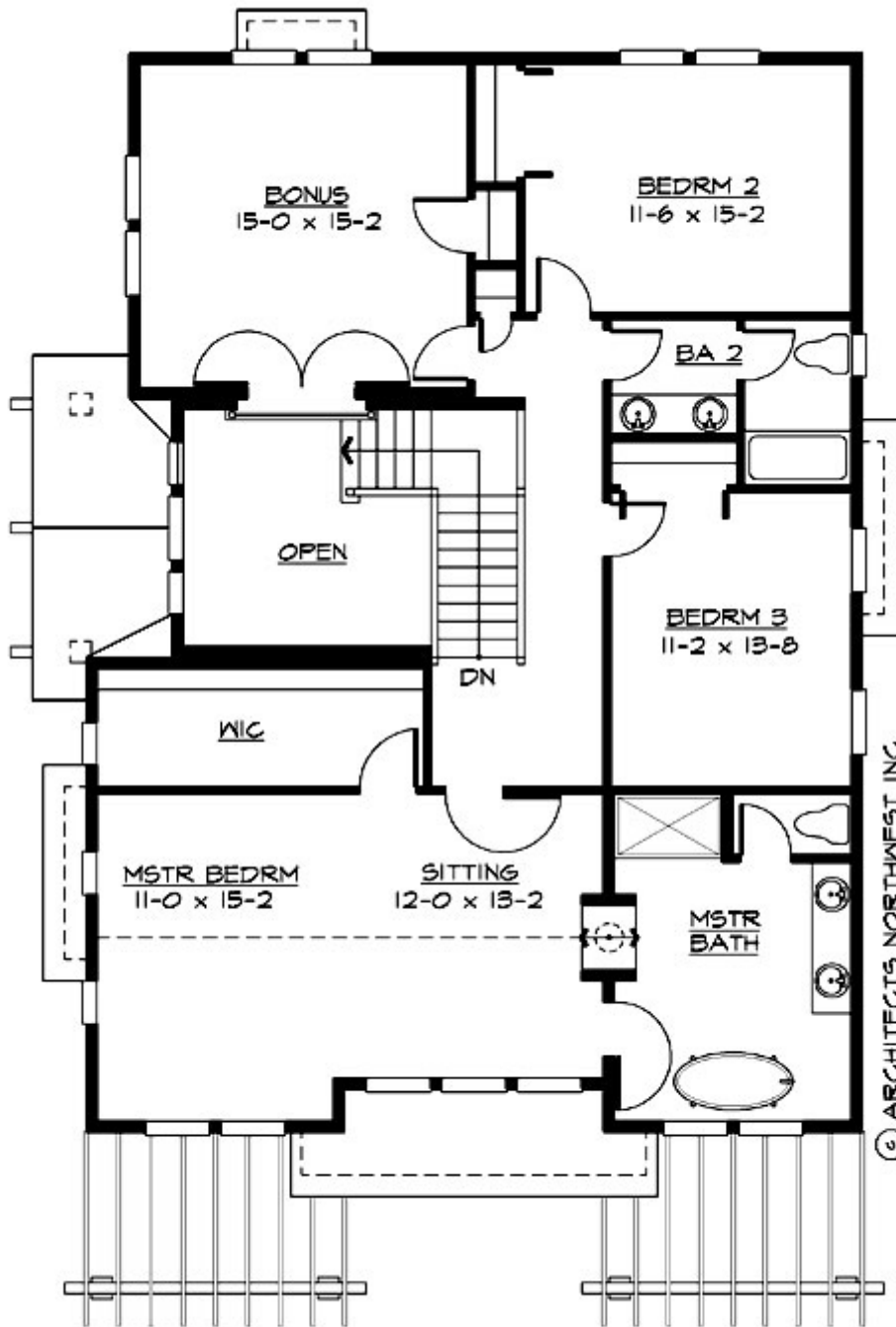


© ARCHITECTS NORTHWEST INC.

MAIN FLOOR PLAN

# BLACKCOMB - M3375A3SU-0

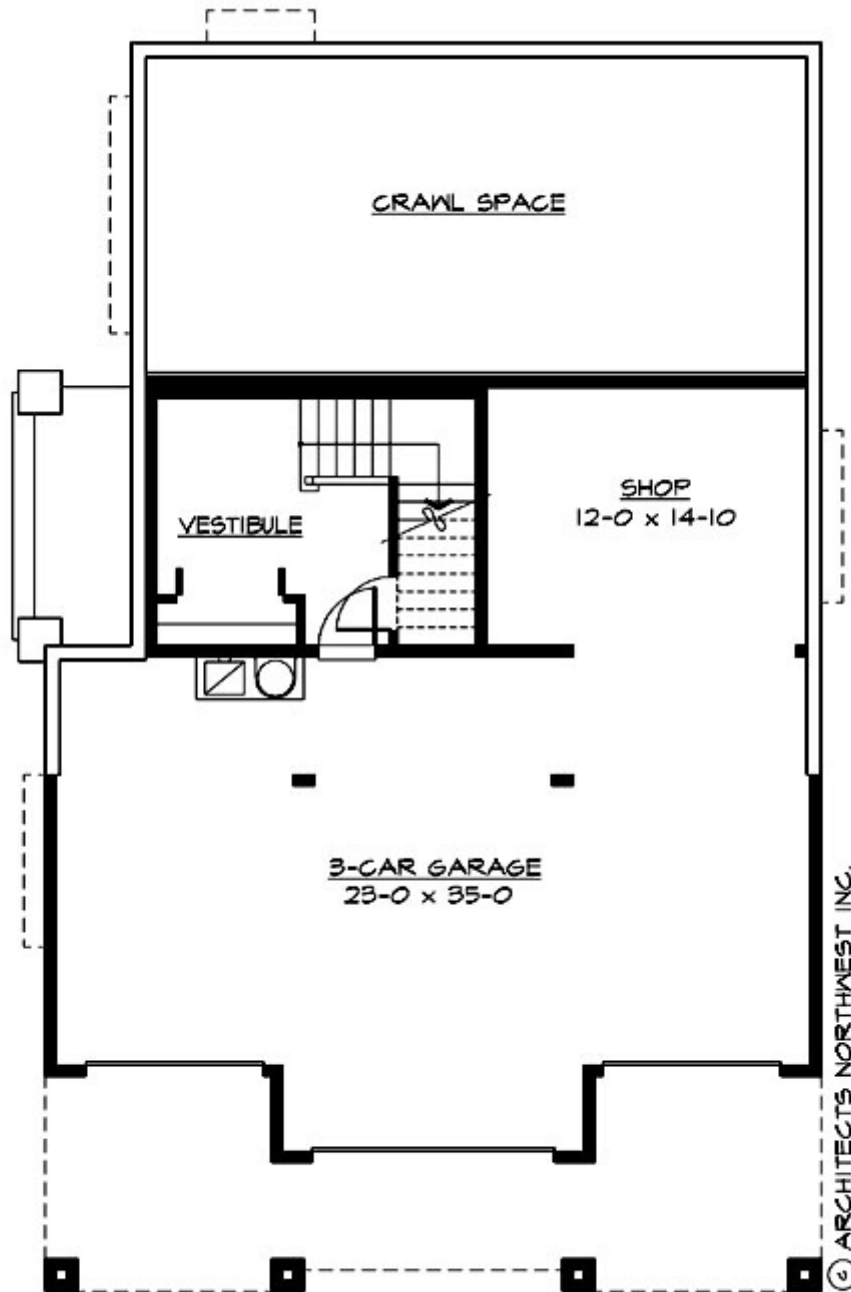
## UPPER FLOOR



UPPER FLOOR PLAN

# BLACKCOMB - M3375A3SU-0

## LOWER FLOOR



LOWER FLOOR PLAN

# BLACKCOMB - M3375A3SU-0

## PLAN DETAILS

### Area Summary

Total Area:	<b>3375 Sq. Ft.</b>
Main Floor:	<b>1685 Sq. Ft.</b>
Upper Floor:	<b>1490 Sq. Ft.</b>
Garage Floor:	<b>966 Sq. Ft.</b>

### General Information

Stories:	<b>3</b>
Width:	<b>37`-0"</b>
Depth:	<b>58`-0"</b>
Height:	<b>24`-0"</b>

### Architectural Style

Craftsman  
Lodge  
Shingle

### Number of Rooms

Bedrooms:	<b>3</b>
Full Baths:	<b>2</b>
Half Baths:	<b>1</b>

### Garage

Garage Size:	<b>3</b>
Garage Door Location:	<b>Side</b>
Garage Type:	<b>Under</b>

### Roof Pitches

Primary:	<b>6:12</b>
Secondary:	<b>4:12</b>

### Wall Heights

Main:	<b>9-0"</b>
Upper:	<b>8-0"</b>
Lower:	<b>9-0"</b>

### Foundation Type

Crawl Space

### Roof Framing

Trusses

### Floor Load

Live (lbs):	<b>40 PSF</b>
Dead (lbs):	<b>10 PSF</b>

### Roof Load

Live (lbs):	<b>25 PSF</b>
Dead (lbs):	<b>15 PSF</b>
Wind:	<b>85 MPH</b>

### Design Features

- Bonus Space @ & Upper Floor
- Den/Office
- Front Porch
- Great Room
- Laundry Room @ Main Floor
- Master Bedroom @ Upper Floor Front
- Craftsman House Plans
- Lodge House Plans
- Shingle House Plans