

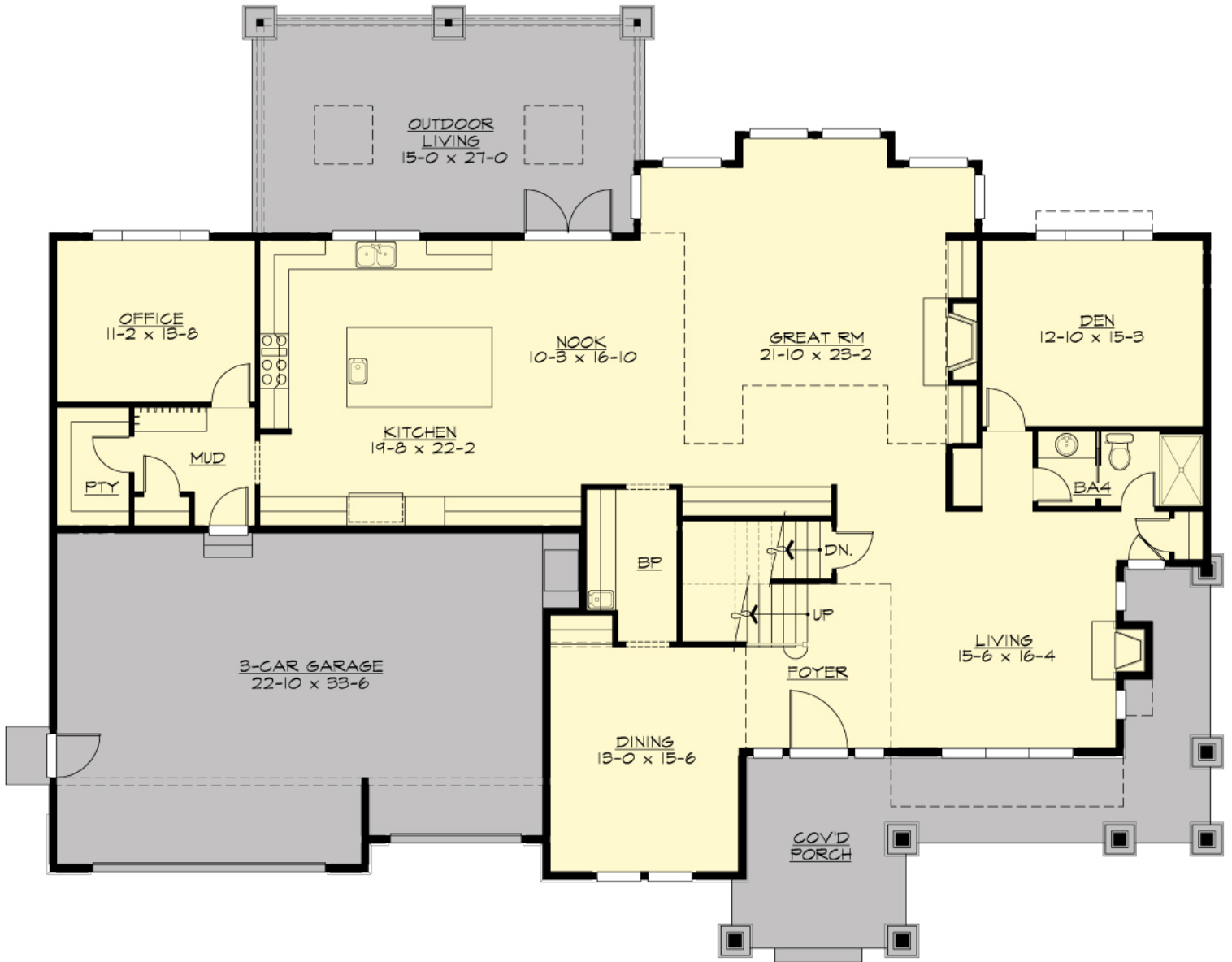
## BRENTWORTH - M4768B3F-4DB

Total Area: **5590 Sq. Ft.**  
Garage Area: **769 Sq. Ft.**  
Garage Size: **3**  
Stories: **3**  
Bedrooms : **4**  
Full Baths : **5**  
Half Baths :  
Width : **80`-0"**  
Depth : **65`-0"**  
Height : **26`-0"**  
Foundation : **Basement**



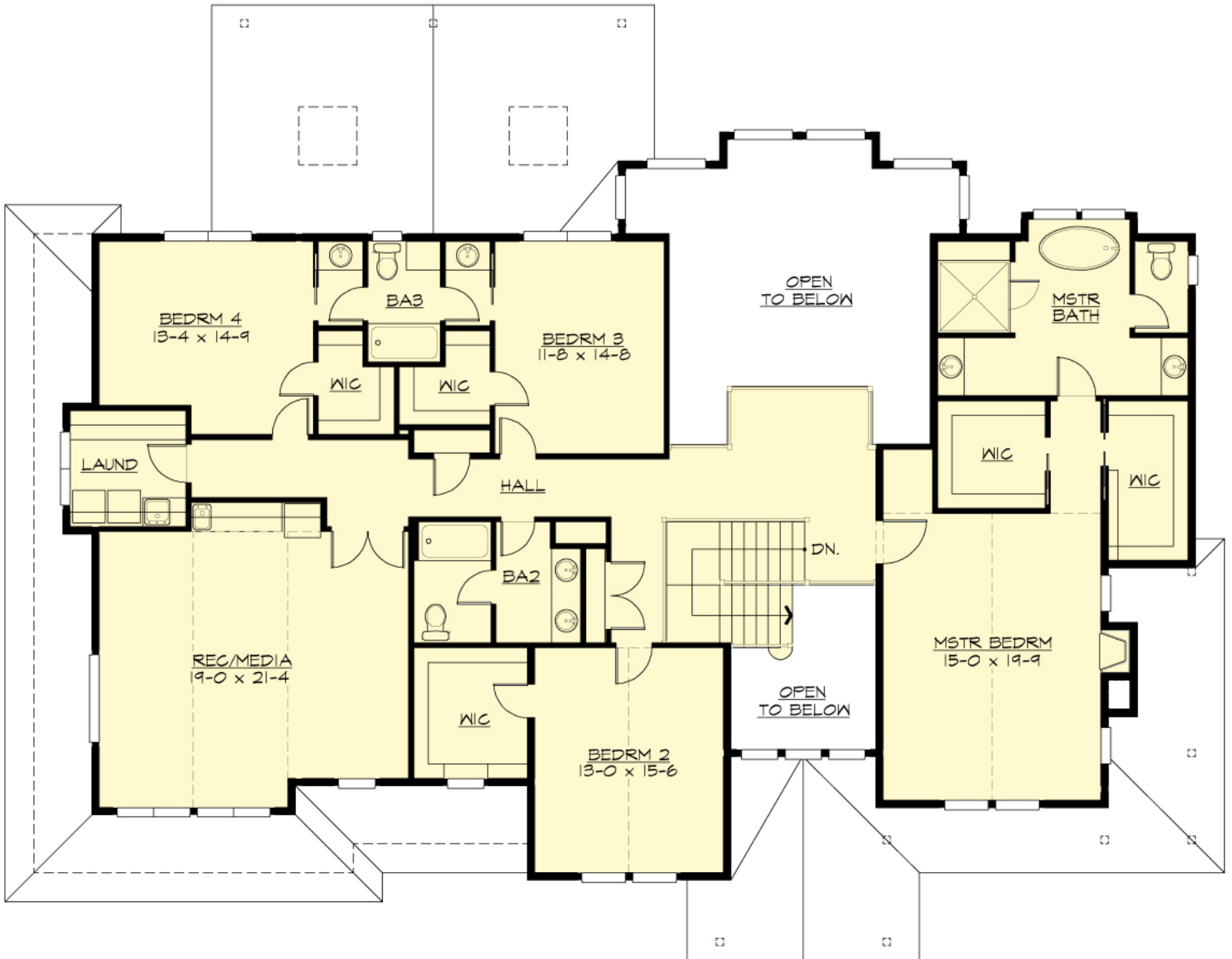
# BRENTWORTH - M4768B3F-4DB

## MAIN FLOOR



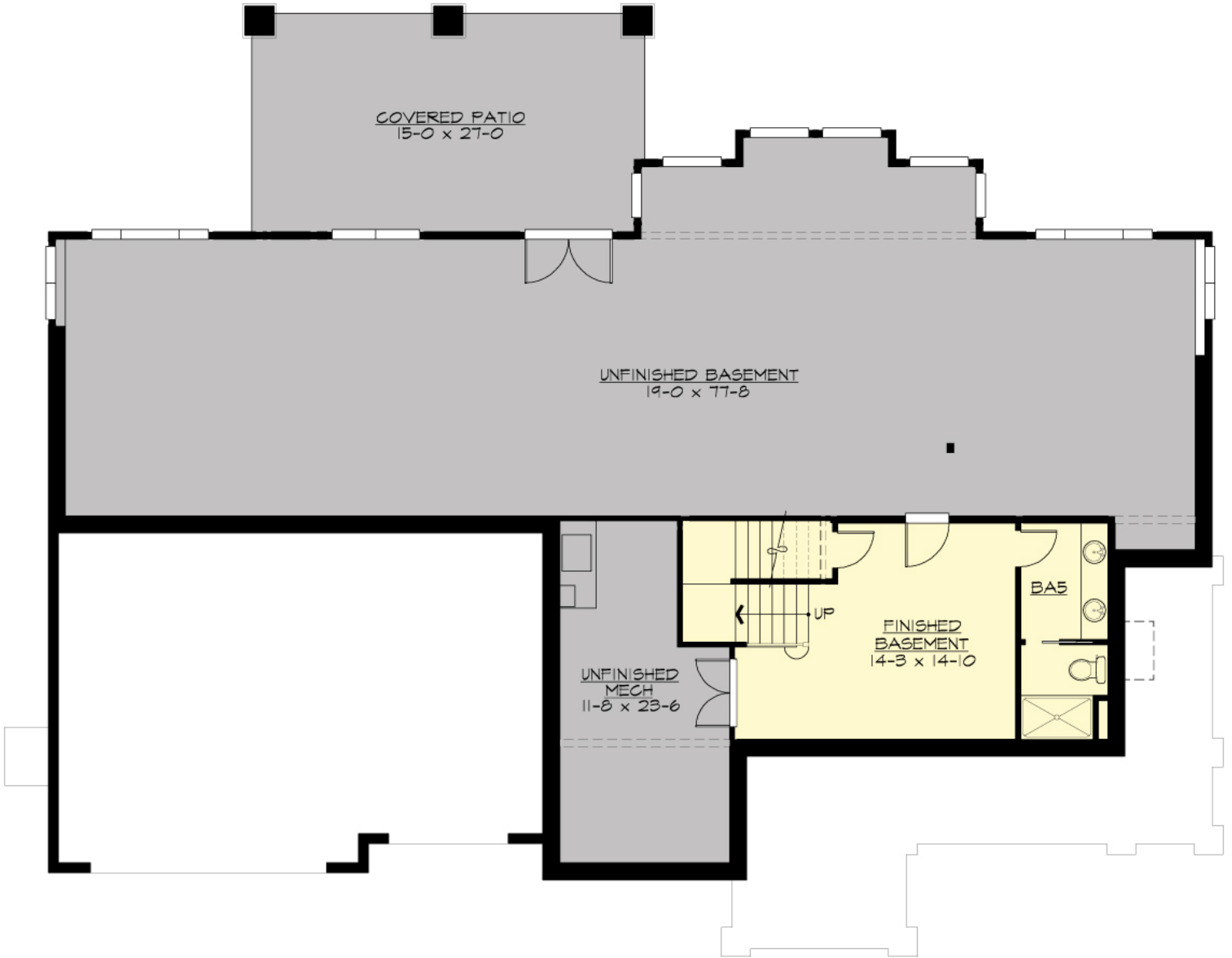
# BRENTWORTH - M4768B3F-4DB

## UPPER FLOOR



# BRENTWORTH - M4768B3F-4DB

## LOWER FLOOR



# BRENTWORTH - M4768B3F-4DB

## PLAN DETAILS

### Area Summary

Total Area:	<b>5590 Sq. Ft.</b>
Main Floor:	<b>2550 Sq. Ft.</b>
Upper Floor:	<b>2562 Sq. Ft.</b>
Lower Floor:	<b>478 Sq. Ft.</b>
Garage Floor:	<b>769 Sq. Ft.</b>

### General Information

Stories:	<b>3</b>
Width:	<b>80`-0"</b>
Depth:	<b>65`-0"</b>
Height:	<b>26`-0"</b>

### Architectural Style

Contemporary  
Modern  
Northwest

### Number of Rooms

Bedrooms:	<b>4</b>
Full Baths:	<b>5</b>

### Garage

Garage Size:	<b>3</b>
Garage Door Location:	<b>Front</b>

### Roof Pitches

Primary:	<b>4:12</b>
Secondary:	<b>3:12</b>

### Wall Heights

Main:	<b>9-0"</b>
Upper:	<b>9-0"</b>
Lower:	<b>9-0"</b>

### Foundation Type

Daylight Basement

### Roof Framing

Combination

### Floor Load

Live (lbs):	<b>40 PSF</b>
Dead (lbs):	<b>10 PSF</b>

### Roof Load

Live (lbs):	<b>25 PSF</b>
Dead (lbs):	<b>15 PSF</b>
Wind:	<b>85 MPH</b>

### Design Features

- Bonus Space @ & Upper Floor
- Den/Office
- Front and Rear Porch
- Great Room
- Laundry Room @ & Upper Floor
- Master Bedroom @ Upper Floor Front
- Contemporary Home Plans
- Modern Home Plans
- Northwest Floor Plans
- View Lot (Front) Plans
- Wide Lot House Plans