

**ARCHITECTS  
NORTHWEST**

Your Family Architect



For Questions and Ordering

**Call: 1-888-272-4100**

E-mail: [Info@ArchitectsNW.com](mailto:Info@ArchitectsNW.com)

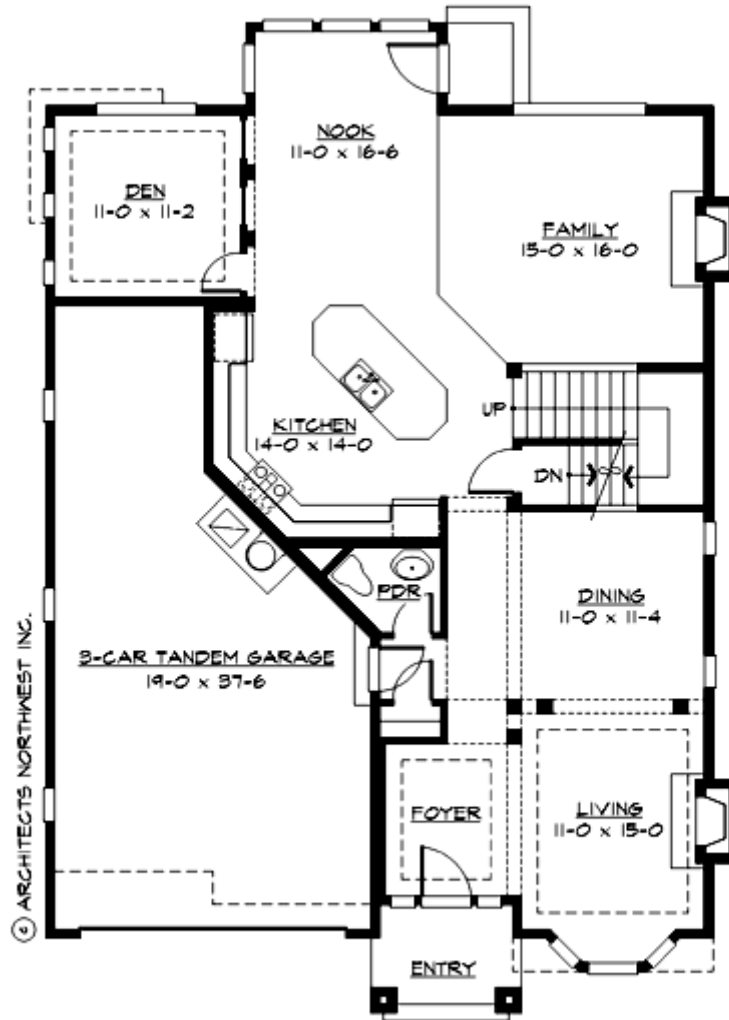
## **BRIER HILL HEIGHTS - M3700D3FT-0DB**

Total Area: **4410 Sq. Ft.**  
Garage Area: **600 Sq. Ft.**  
Garage Size: **3**  
Stories: **4**  
Bedrooms : **5**  
Full Baths : **3**  
Half Baths : **1**  
Width : **40`-0"**  
Depth : **59`-6"**  
Height : **32`-0"**  
Foundation : **Basement**



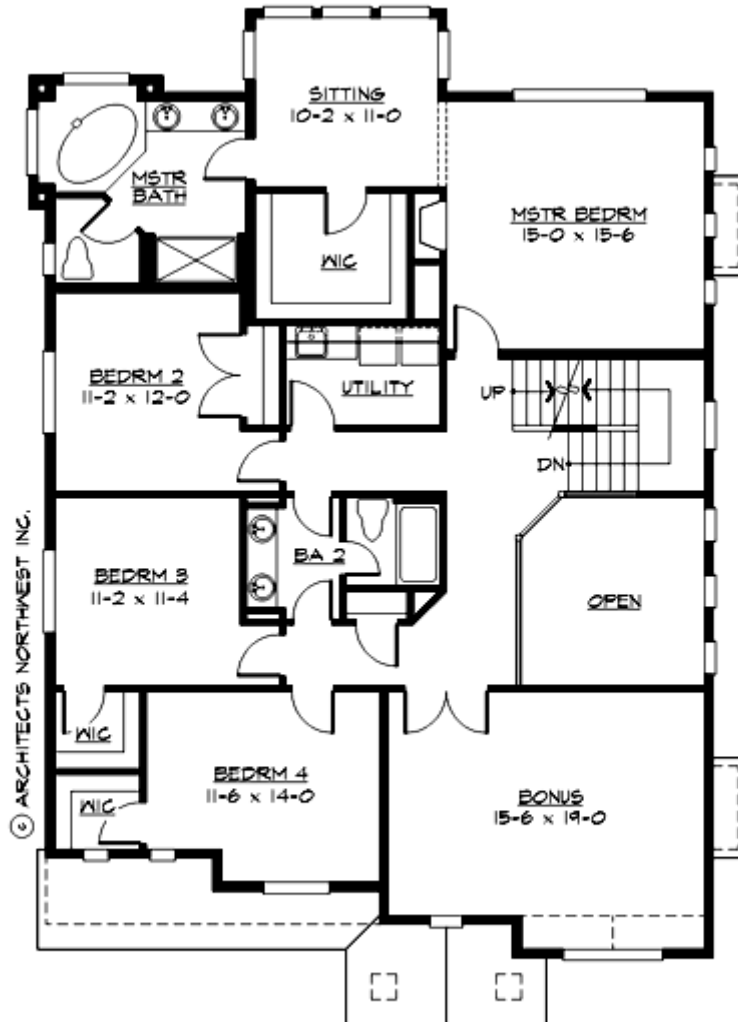
# BRIER HILL HEIGHTS - M3700D3FT-0DB

## MAIN FLOOR



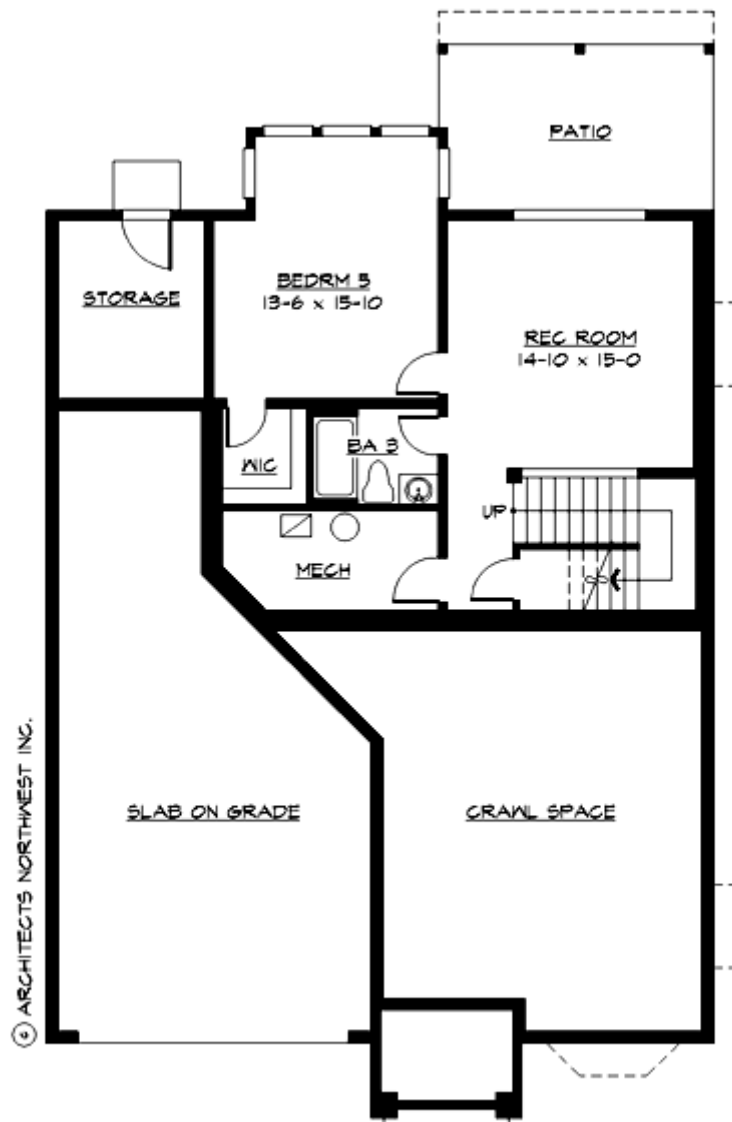
# BRIER HILL HEIGHTS - M3700D3FT-0DB

## UPPER FLOOR



# BRIER HILL HEIGHTS - M3700D3FT-0DB

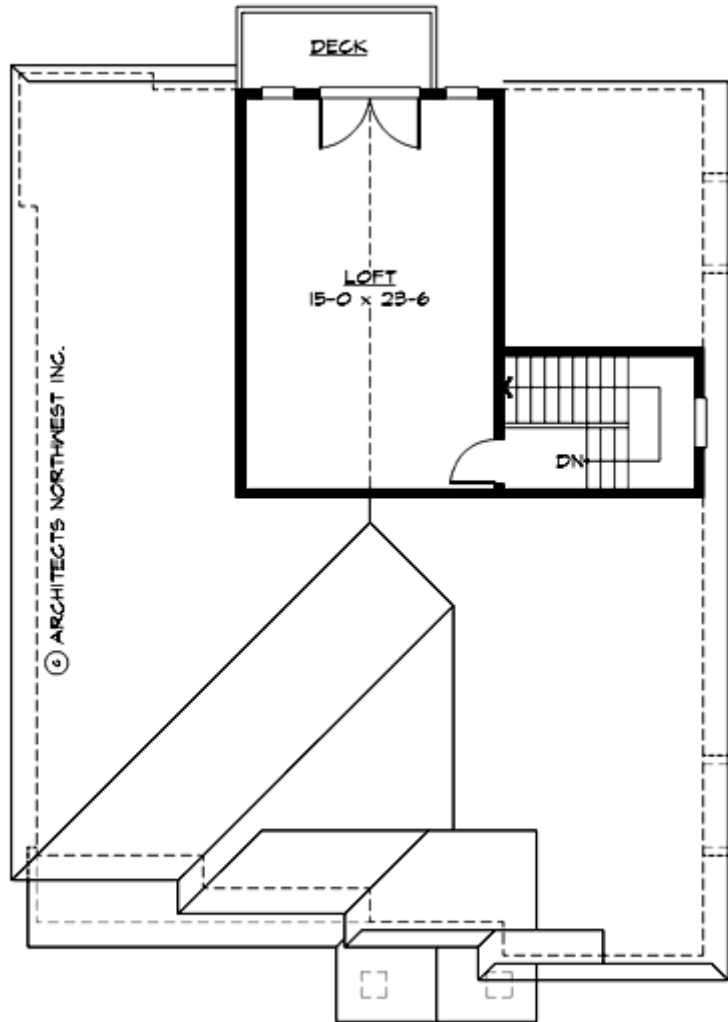
## LOWER FLOOR



© ARCHITECTS NORTHWEST INC.

# BRIER HILL HEIGHTS - M3700D3FT-0DB

## THIRD FLOOR



# BRIER HILL HEIGHTS - M3700D3FT-0DB

## PLAN DETAILS

### Area Summary

Total Area:	<b>4410 Sq. Ft.</b>
Main Floor:	<b>1430 Sq. Ft.</b>
Upper Floor:	<b>1790 Sq. Ft.</b>
3rd Floor:	<b>480 Sq. Ft.</b>
Lower Floor:	<b>710 Sq. Ft.</b>
Garage Floor:	<b>600 Sq. Ft.</b>

### General Information

Stories:	<b>4</b>
Width:	<b>40`-0"</b>
Depth:	<b>59`-6"</b>
Height:	<b>32`-0"</b>

### Architectural Style

Hampton  
Shingle  
Traditional

### Number of Rooms

Bedrooms:	<b>5</b>
Full Baths:	<b>3</b>
Half Baths:	<b>1</b>

### Garage

Garage Size:	<b>3</b>
Garage Door Location:	<b>Front</b>
Garage Type:	<b>Tandem</b>

### Roof Pitches

Primary:	<b>8:12</b>
----------	-------------

### Wall Heights

Main:	<b>9-0"</b>
Upper:	<b>8-0"</b>
Lower:	<b>9-0"</b>
Third:	<b>7-0"</b>

### Foundation Type

Daylight Basement

### Roof Framing

Trusses

### Floor Load

Live (lbs):	<b>40 PSF</b>
Dead (lbs):	<b>10 PSF</b>

### Roof Load

Live (lbs):	<b>25 PSF</b>
Dead (lbs):	<b>15 PSF</b>
Wind:	<b>85 MPH</b>

### Design Features

- Bonus Space @ , Upper & Lower Floor
- Den/Office
- Rear Porch
- Great Room
- Laundry Room @ & Upper Floor
- Master Bedroom @ Upper Floor Rear
- Hampton House Plans
- Shingle House Plans
- Traditional House Plans
- Narrow Lot House Plans