

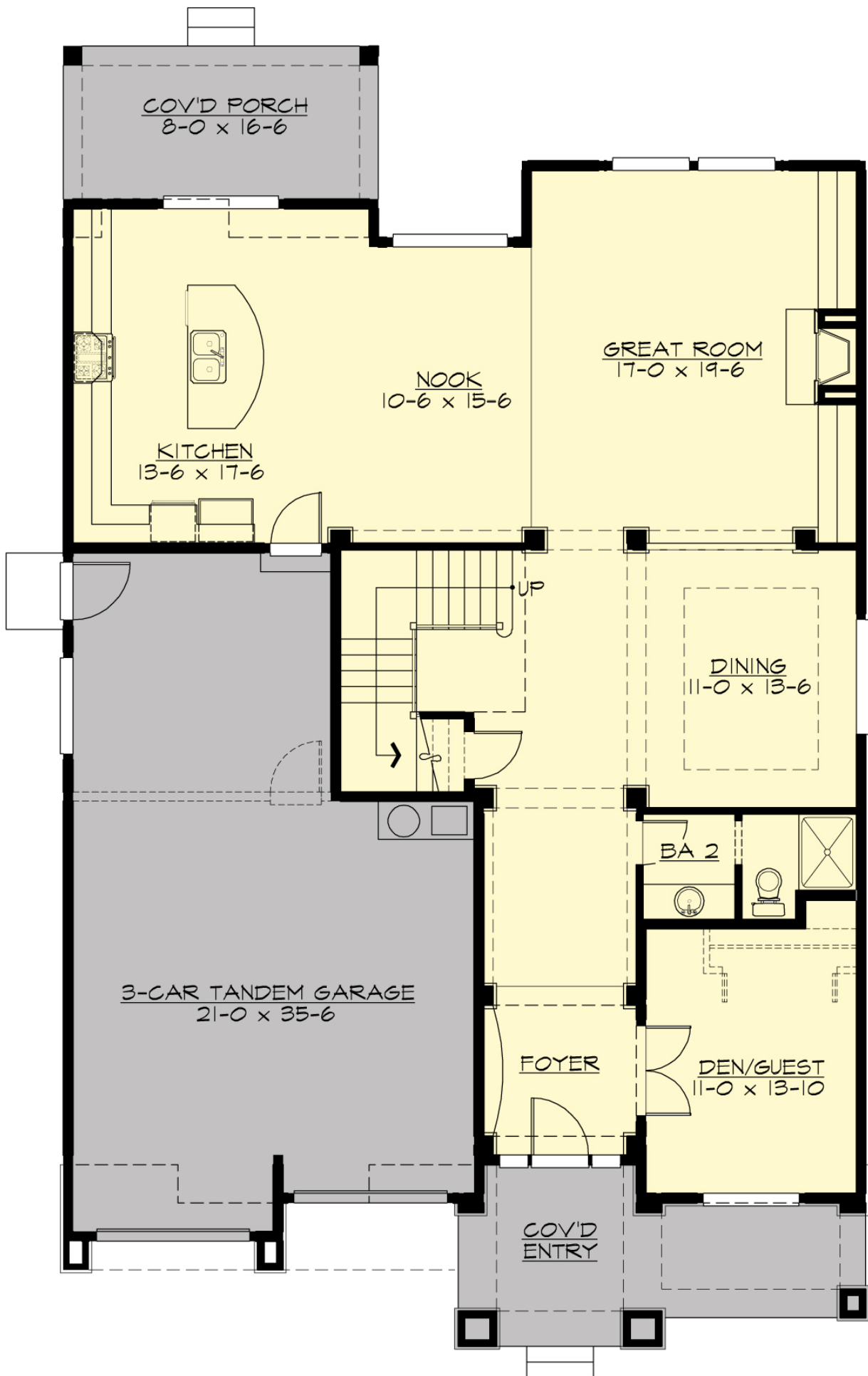
## BRONSON - M3582C3FT-1R

Total Area: **3570 Sq. Ft.**  
Garage Area: **658 Sq. Ft.**  
Garage Size: **3**  
Stories: **2**  
Bedrooms : **4**  
Full Baths : **4**  
Half Baths :  
Width : **42`-0"**  
Depth : **66`-6"**  
Height : **27`-6"**  
Foundation : **Crawl Space**



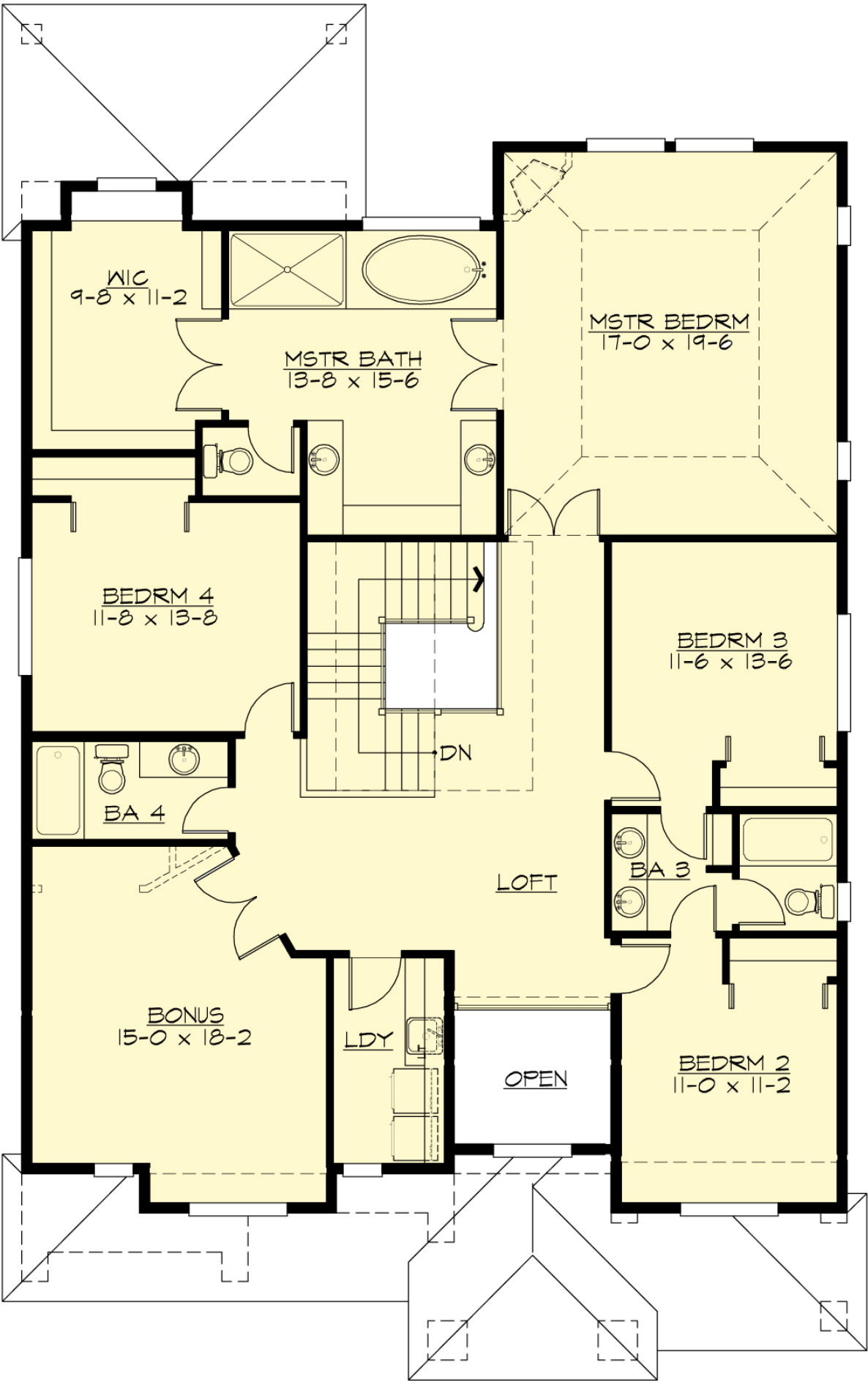
# BRONSON - M3582C3FT-1R

## MAIN FLOOR



# BRONSON - M3582C3FT-1R

## UPPER FLOOR



# BRONSON - M3582C3FT-1R

## PLAN DETAILS

### Area Summary

Total Area:	<b>3570 Sq. Ft.</b>
Main Floor:	<b>1576 Sq. Ft.</b>
Upper Floor:	<b>1994 Sq. Ft.</b>
Garage Floor:	<b>658 Sq. Ft.</b>

### General Information

Stories:	<b>2</b>
Width:	<b>42`-0"</b>
Depth:	<b>66`-6"</b>
Height:	<b>27`-6"</b>

### Architectural Style

Craftsman  
Shingle  
Traditional

### Number of Rooms

Bedrooms:	<b>4</b>
Full Baths:	<b>4</b>

### Garage

Garage Size:	<b>3</b>
Garage Door Location:	<b>Front</b>
Garage Type:	<b>Tandem</b>

### Roof Pitches

Primary:	<b>4:12</b>
Secondary:	<b>3:12</b>

### Wall Heights

Main:	<b>9-0"</b>
Upper:	<b>9-0"</b>

### Foundation Type

Crawl Space

### Roof Framing

Trusses

### Floor Load

Live (lbs):	<b>40 PSF</b>
Dead (lbs):	<b>10 PSF</b>

### Roof Load

Live (lbs):	<b>25 PSF</b>
Dead (lbs):	<b>15 PSF</b>
Wind:	<b>85 MPH</b>

### Design Features

- Bonus Space @ & Upper Floor
- Den/Office
- Front and Rear Porch
- Great Room
- Laundry Room @ & Upper Floor
- Master Bedroom @ Upper Floor Rear
- Craftsman House Plans
- Shingle House Plans
- Traditional House Plans
- Narrow Lot House Plans
- View Lot (Rear) Plans