

## **MARIGOLD - M4353A3F-0DB**

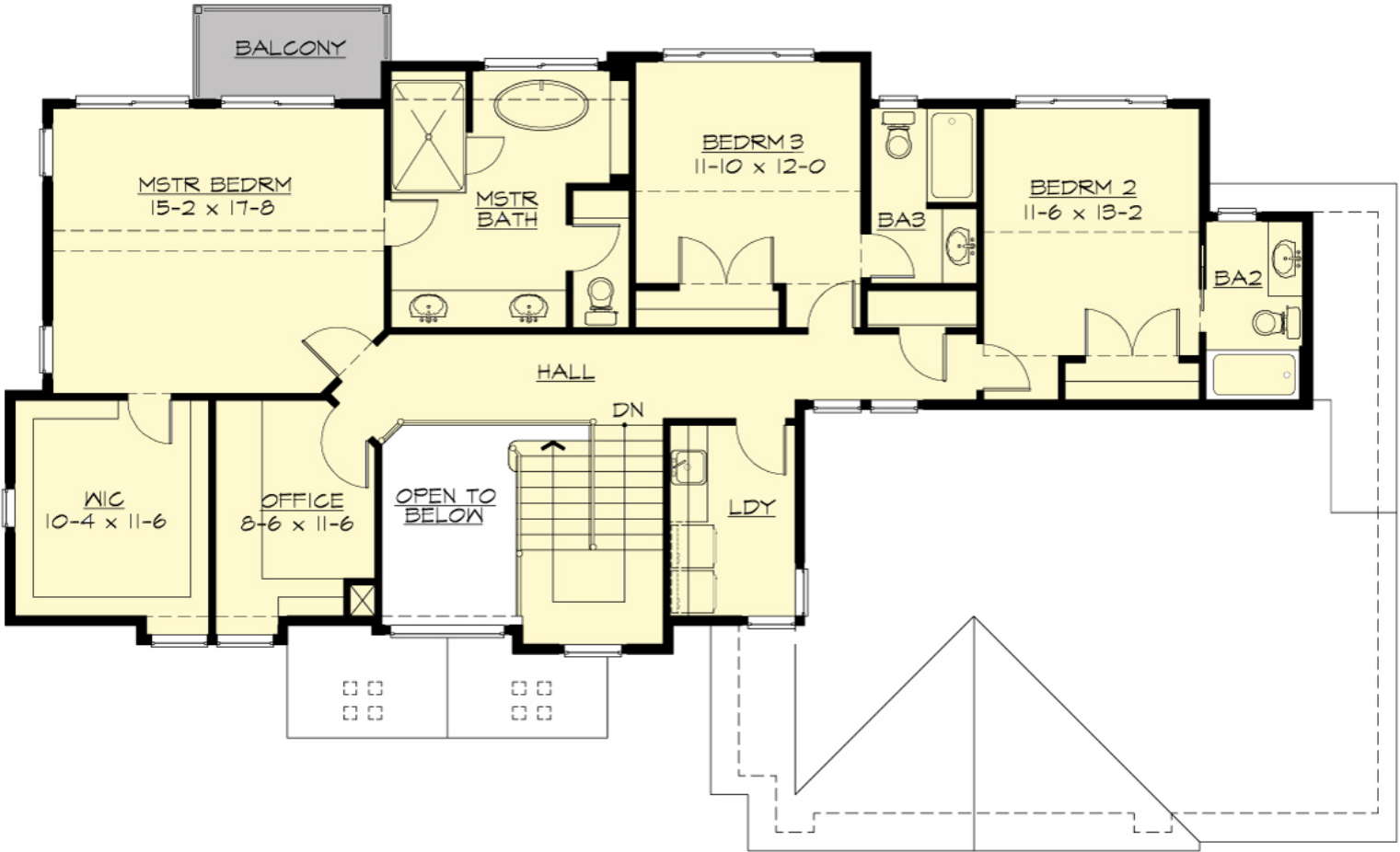
Total Area: **4353 Sq. Ft.**  
Garage Area: **793 Sq. Ft.**  
Garage Size: **3**  
Stories: **3**  
Bedrooms : **6**  
Full Baths : **5**  
Half Baths :  
Width : **73`-0"**  
Depth : **49`-0"**  
Height : **23`-6"**  
Foundation : **Basement**





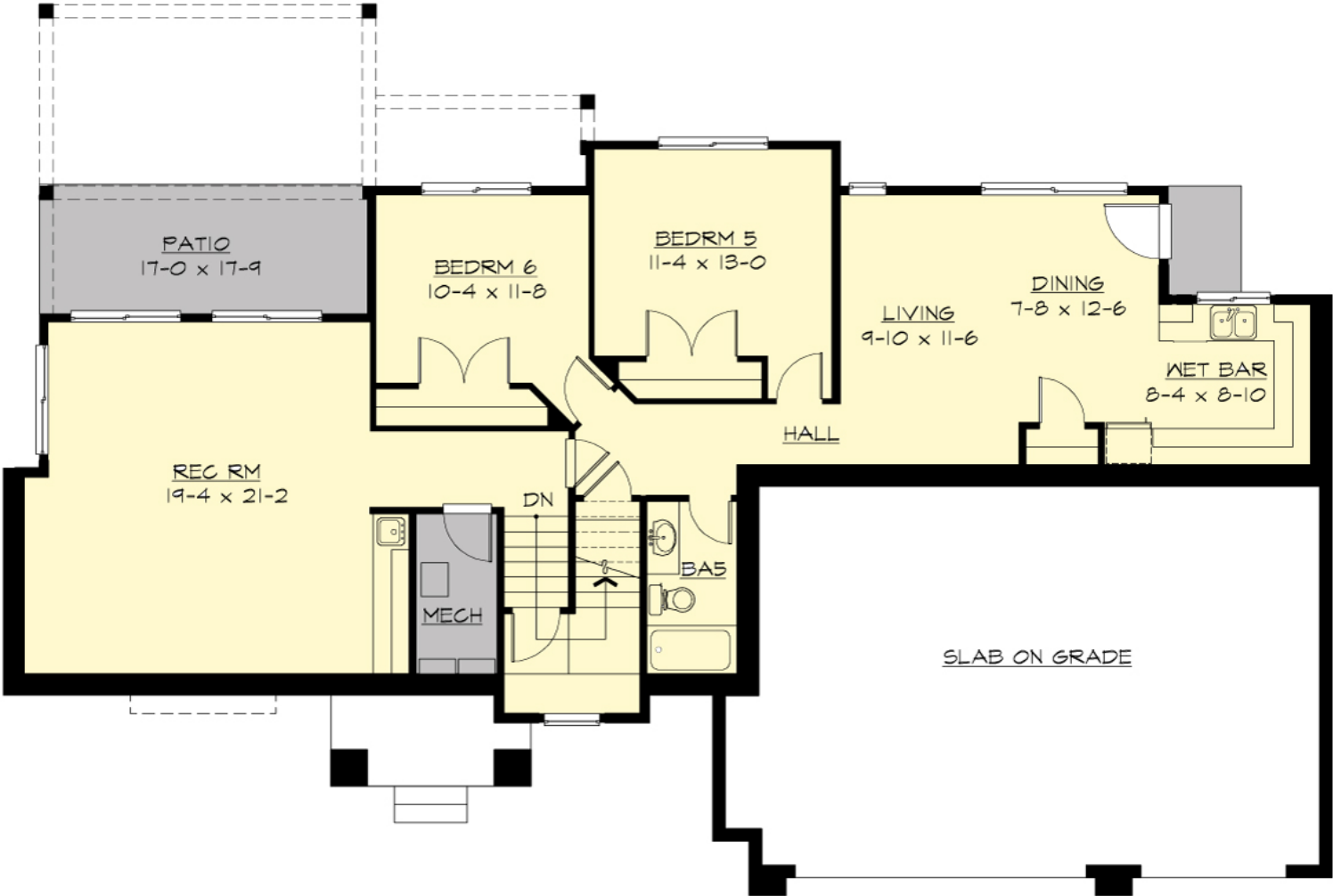
# MARIGOLD - M4353A3F-0DB

## UPPER FLOOR



# MARIGOLD - M4353A3F-0DB

## LOWER FLOOR



# MARIGOLD - M4353A3F-0DB

## PLAN DETAILS

### Area Summary

Total Area:	<b>4353 Sq. Ft.</b>
Main Floor:	<b>1432 Sq. Ft.</b>
Upper Floor:	<b>1479 Sq. Ft.</b>
Lower Floor:	<b>1442 Sq. Ft.</b>
Garage Floor:	<b>793 Sq. Ft.</b>

### General Information

Stories:	<b>3</b>
Width:	<b>73`-0"</b>
Depth:	<b>49`-0"</b>
Height:	<b>23`-6"</b>

### Architectural Style

### Number of Rooms

Bedrooms:	<b>6</b>
Full Baths:	<b>5</b>

### Garage

Garage Size:	<b>3</b>
Garage Door Location:	<b>Front</b>

### Roof Pitches

Primary:	<b>4:12</b>
----------	-------------

### Wall Heights

Main:	<b>9-0"</b>
Upper:	<b>8-0"</b>
Lower:	<b>9-0"</b>

### Foundation Type

Daylight Basement

### Roof Framing

Trusses

### Floor Load

Live (lbs):	<b>40 PSF</b>
Dead (lbs):	<b>10 PSF</b>

### Roof Load

Live (lbs):	<b>25 PSF</b>
Dead (lbs):	<b>15 PSF</b>
Wind:	<b>85 MPH</b>

### Design Features

- Bonus Space @ & Lower Floor
- Den/Office
- Front and Rear Porch
- Great Room
- Laundry Room @ & Upper Floor
- Master Bedroom @ Upper Floor Rear