

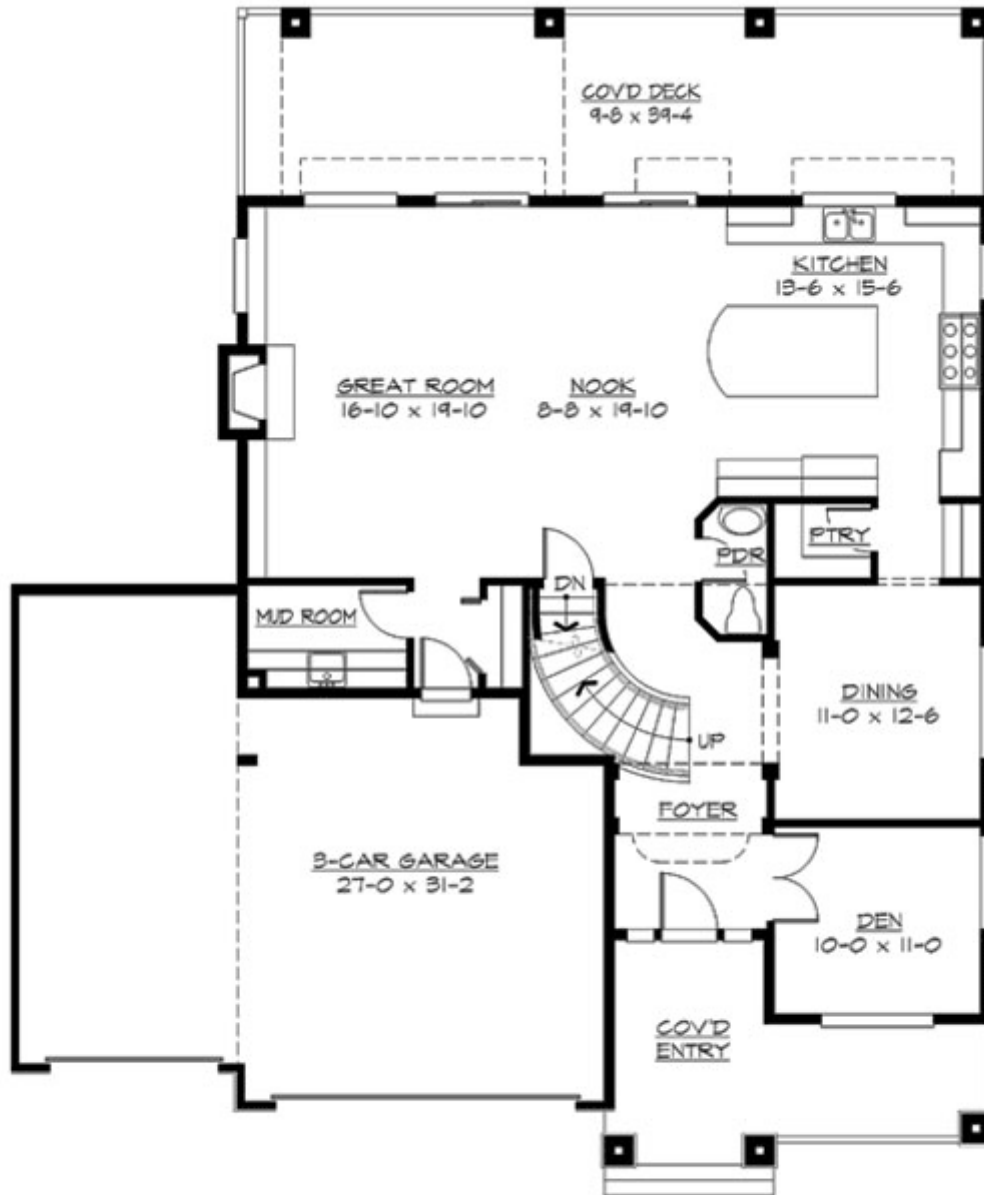
## WOODLAND PARK - M2823A3F-17DB

Total Area: **4420 Sq. Ft.**  
Garage Area: **724 Sq. Ft.**  
Garage Size: **3**  
Stories: **3**  
Bedrooms : **3**  
Full Baths : **2**  
Half Baths : **1**  
Width : **52`-0"**  
Depth : **62`-0"**  
Height : **24`-0"**  
Foundation : **Basement**



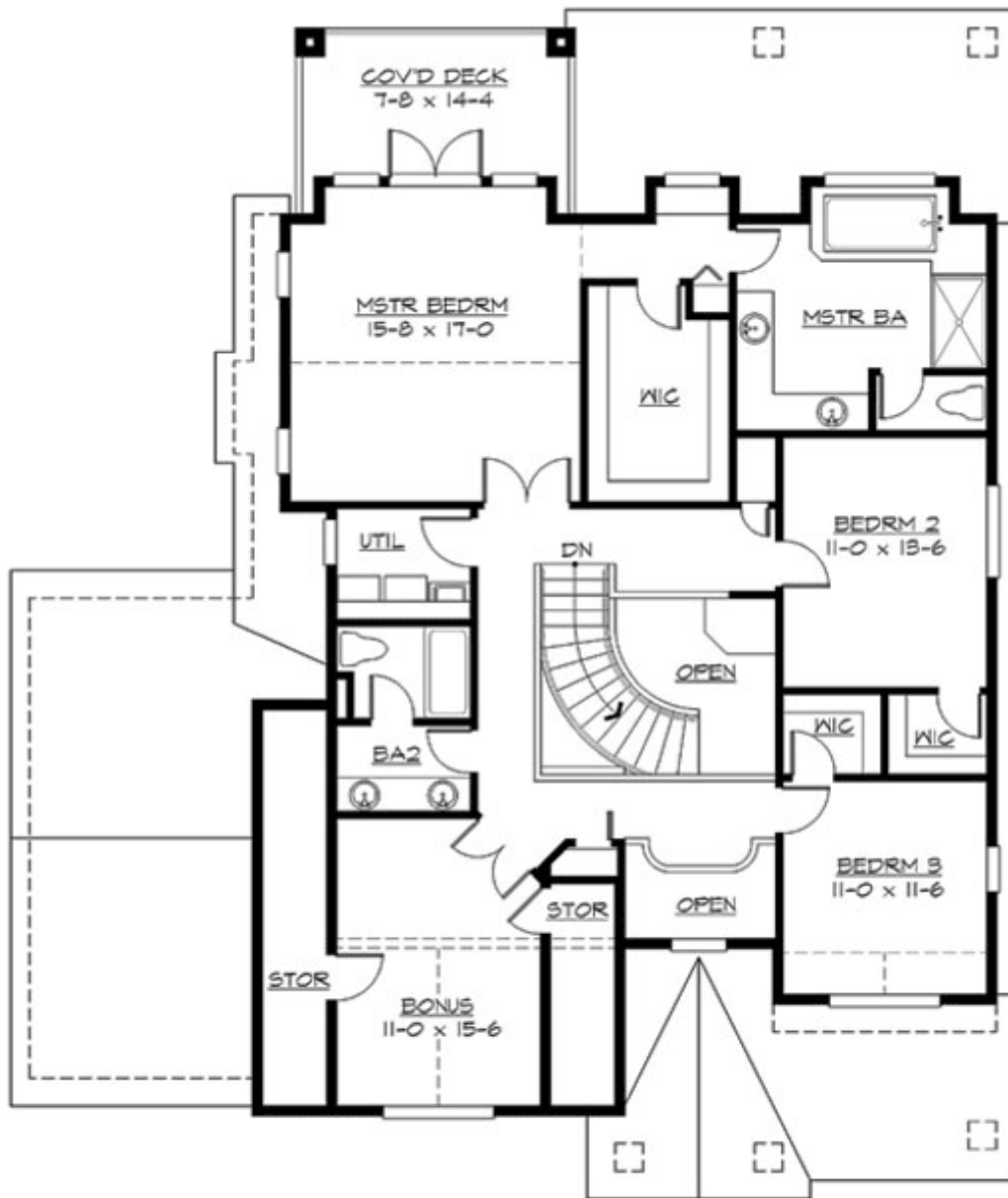
# WOODLAND PARK - M2823A3F-17DB

## MAIN FLOOR



# WOODLAND PARK - M2823A3F-17DB

## UPPER FLOOR



# WOODLAND PARK - M2823A3F-17DB

## LOWER FLOOR



# WOODLAND PARK - M2823A3F-17DB

## PLAN DETAILS

### Area Summary

Total Area:	<b>4420 Sq. Ft.</b>
Main Floor:	<b>1400 Sq. Ft.</b>
Upper Floor:	<b>1620 Sq. Ft.</b>
Lower Floor:	<b>1400 Sq. Ft.</b>
Garage Floor:	<b>724 Sq. Ft.</b>

### General Information

Stories:	<b>3</b>
Width:	<b>52`-0"</b>
Depth:	<b>62`-0"</b>
Height:	<b>24`-0"</b>

### Architectural Style

Hampton  
Shingle  
Traditional

### Number of Rooms

Bedrooms:	<b>3</b>
Full Baths:	<b>2</b>
Half Baths:	<b>1</b>

### Garage

Garage Size:	<b>3</b>
Garage Door Location:	<b>Front</b>

### Roof Pitches

Primary:	<b>8:12</b>
Secondary:	<b>9:12</b>

### Wall Heights

Main:	<b>9-0"</b>
Upper:	<b>9-0"</b>
Lower:	<b>8-0"</b>

### Foundation Type

Daylight Basement

### Roof Framing

Trusses

### Floor Load

Live (lbs):	<b>40 PSF</b>
Dead (lbs):	<b>10 PSF</b>

### Roof Load

Live (lbs):	<b>25 PSF</b>
Dead (lbs):	<b>15 PSF</b>
Wind:	<b>85 MPH</b>

### Design Features

- Bonus Space @ , Upper & Lower Floor
- Den/Office
- Front Porch
- Great Room
- Laundry Room @ Main & Upper Floor
- Master Bedroom @ Upper Floor Rear
- Hampton House Plans
- Shingle House Plans
- Traditional House Plans