

## ABELLA - PLAN M4828A2S2RU-0DB

Total Area: 4828 sq. ft.  
Garage Area: 1368 sq. ft.  
Garage Area: 1368 sq. ft.  
Garage Size: 4  
Stories: 3  
Bedrooms: 5  
Full Baths: 5  
Half Baths: 1  
Width: 64'-0"  
Depth: 74'-6"  
Height: 24'-0"  
Foundation: Daylight Basement



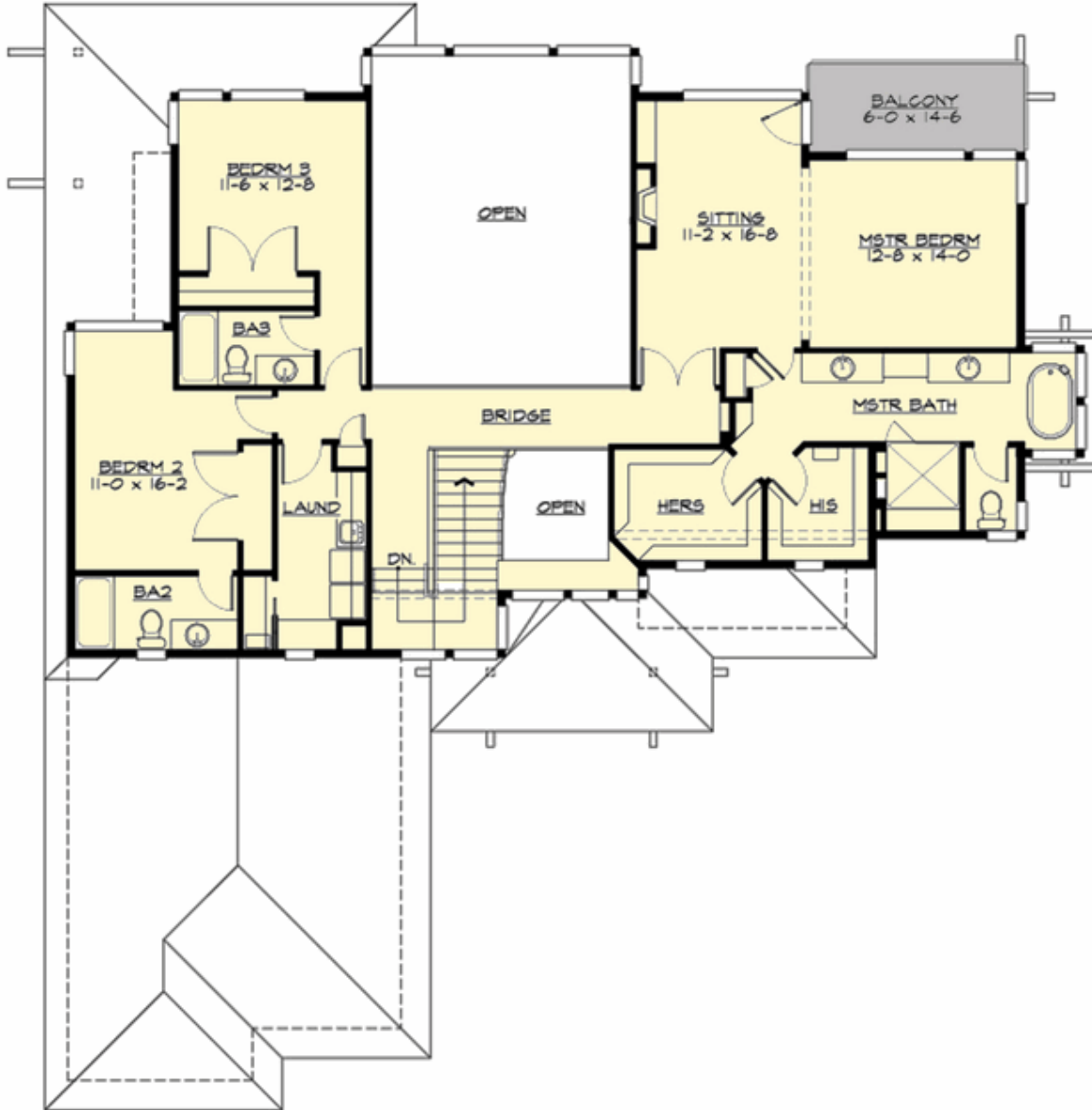
## ABELLA - PLAN M4828A2S2RU-0DB

### MAIN FLOOR



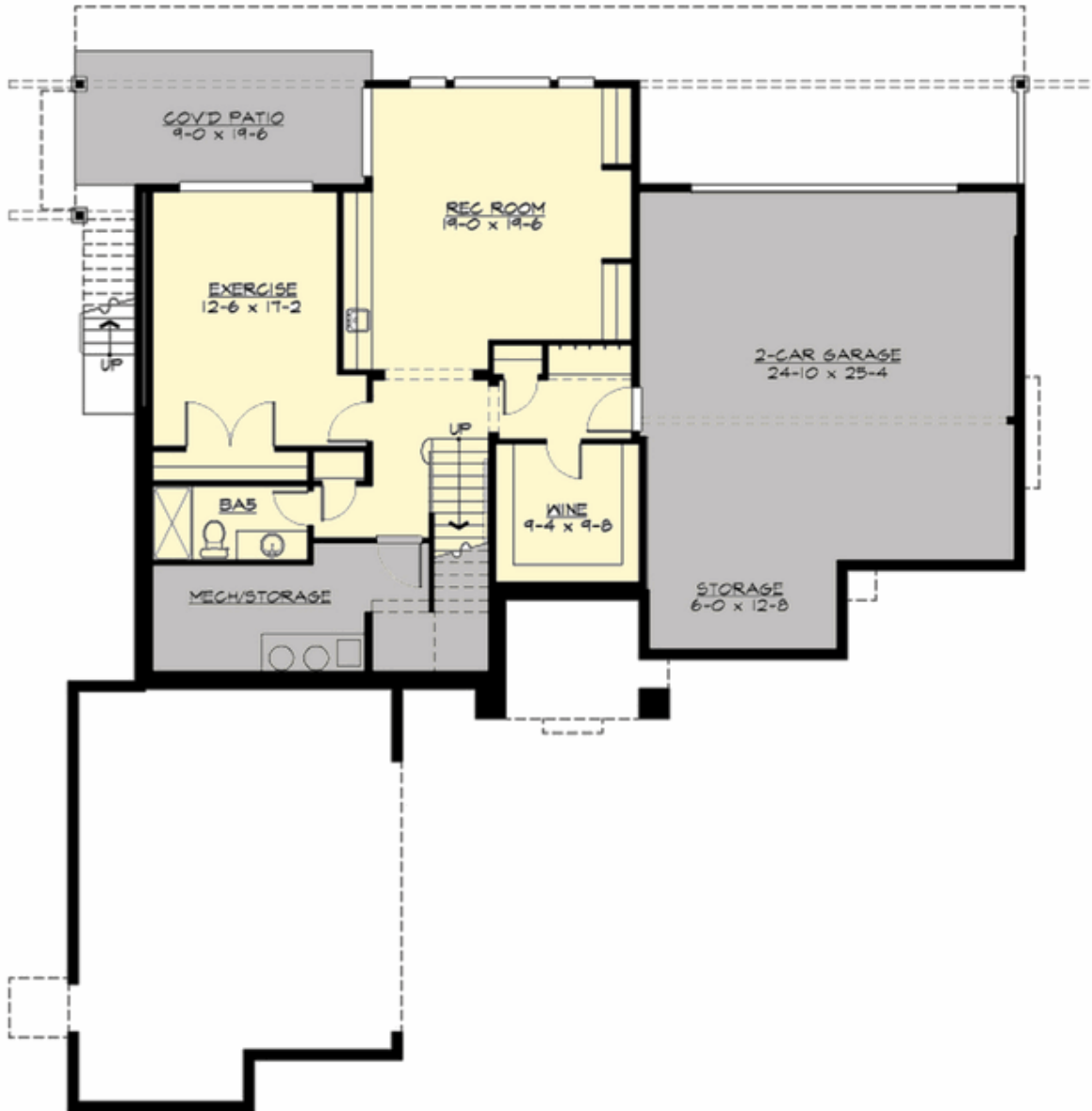
**ABELLA - PLAN M4828A2S2RU-0DB**

**UPPER FLOOR**



## ABELLA - PLAN M4828A2S2RU-0DB

### LOWER FLOOR



## ABELLA - PLAN M4828A2S2RU-0DB

### PLAN DETAILS

#### Area Summary

Total Area: 4828 sq. ft.  
Main Floor: 2004 sq. ft.  
Upper Floor: 1593 sq. ft.  
Lower Floor: 1231 sq. ft.  
Garage Floor: 1368 sq. ft.

#### General Information

Stories: 3  
Width: 64'-0"  
Depth: 74'-6"  
Height: 24'-0"

#### Architectural Style

Contemporary  
Modern  
Prairie

#### Number of Rooms

Bedrooms: 5  
Full Baths: 5  
Half Baths: 1

#### Garage

Garage Size: 4  
Garage Door Location: Side  
Garage Type: Under

#### Roof Pitches

Primary: 3:12

#### Wall Heights

Main: 10'-0"  
Upper: 9'-0"  
Lower: 10'-0"

#### Foundation Type

Daylight Basement

#### Roof Framing

Trusses

#### Floor Load

Live (lbs): 40 PSF  
Dead (lbs): 10 PSF

#### Roof Load

Live (lbs): 25 PSF  
Dead (lbs): 15 PSF  
Wind: 85 MPH

#### Design Features

- Bonus Space @ Lower Floor
- Den/Office
- Front and Rear Porch
- Great Room
- Laundry Room @ Upper Floor
- Luxury Plan
- Master Bedroom @ Upper Floor Rear
- View Lot - Rear