

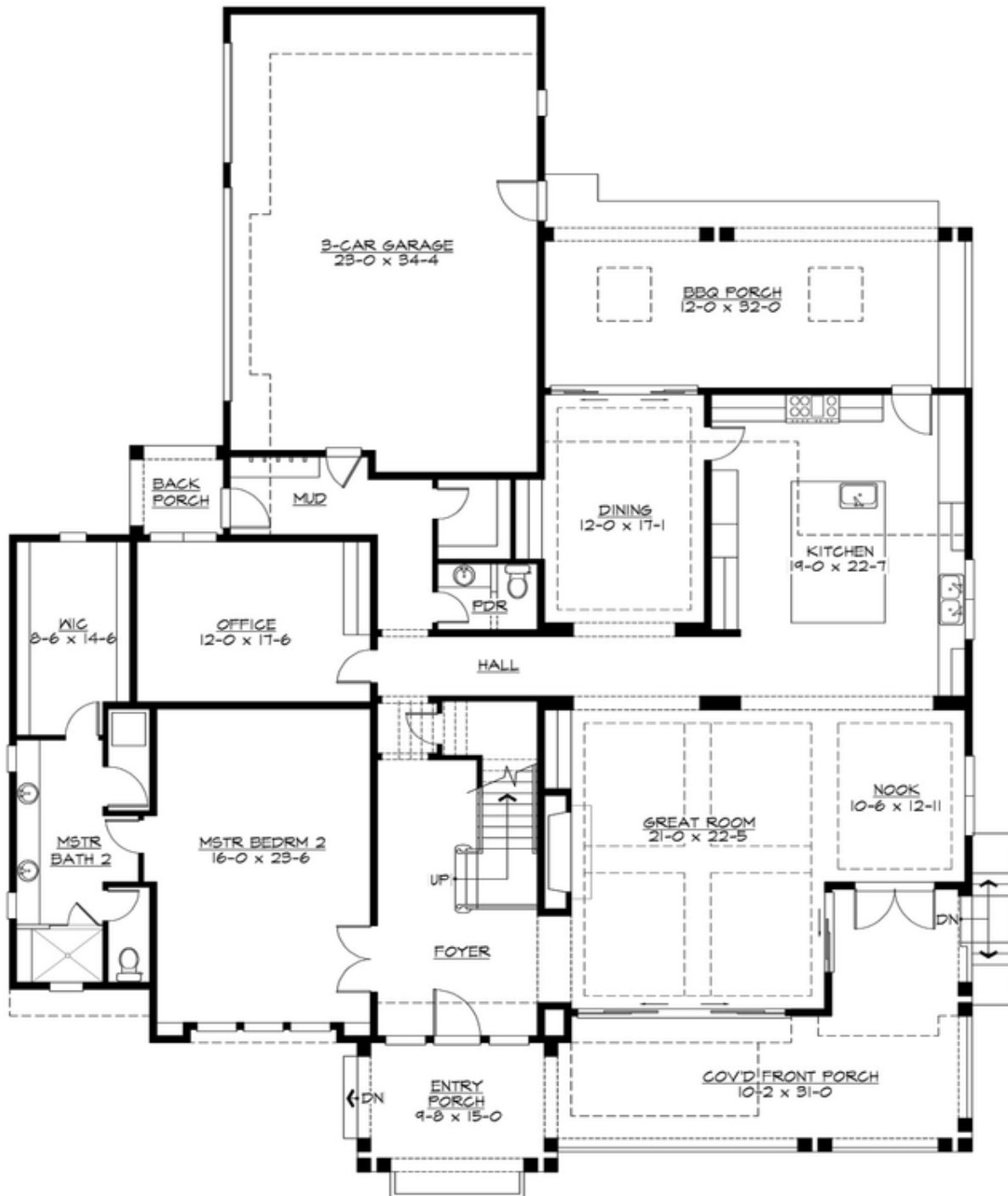
## BRAEMOOR - PLAN M6369A3RS-0

Total Area: 6322 sq. ft.  
Garage Area: 814 sq. ft.  
Garage Area: 814 sq. ft.  
Garage Size: 3  
Stories: 2  
Bedrooms: 5  
Full Baths: 5  
Half Baths: 1  
Width: 72'-0"  
Depth: 89'-2"  
Height: 29'-0"  
Foundation: Crawl Space



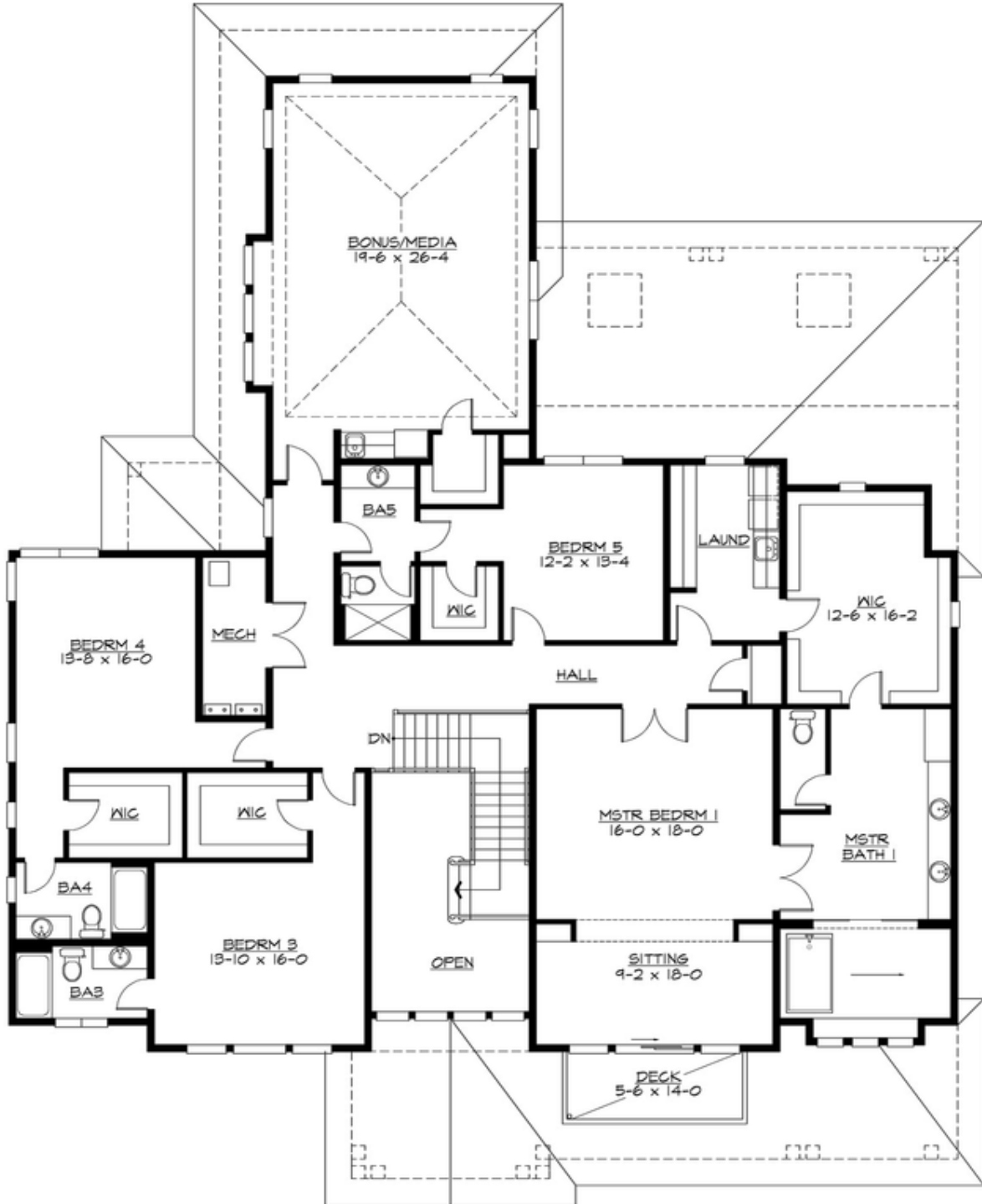
**BRAEMOOR - PLAN M6369A3RS-0**

MAIN FLOOR



**BRAEMOOR - PLAN M6369A3RS-0**

**UPPER FLOOR**





## BRAEMOOR - PLAN M6369A3RS-0

### PLAN DETAILS

#### Area Summary

Total Area:	6322 sq. ft.
Main Floor:	2980 sq. ft.
Upper Floor:	3342 sq. ft.
Garage Floor:	814 sq. ft.

#### General Information

Stories:	2
Width:	72'-0"
Depth:	89'-2"
Height:	29'-0"

#### Architectural Style

Craftsman  
Northwest  
Shingle

#### Number of Rooms

Bedrooms:	5
Full Baths:	5
Half Baths:	1

#### Garage

Garage Size:	3
Garage Door Location:	Side

#### Roof Pitches

Primary:	4:12
Secondary:	3:12

#### Wall Heights

Main:	10'-0"
Upper:	9'-0"

#### Foundation Type

Crawl Space

#### Roof Framing

Trusses

#### Floor Load

Live (lbs):	40 PSF
Dead (lbs):	10 PSF

#### Roof Load

Live (lbs):	25 PSF
Dead (lbs):	15 PSF
Wind:	85 MPH

#### Design Features

- Bonus Space @ Upper Floor
- Den/Office
- Front and Rear Porch
- Great Room
- Laundry Room @ Upper Floor
- Master Bedroom @ Main Floor
- Front
- View Lot - Front
- Wide Lot