

## HAMPTON ROADS - PLAN M5197A3F-0

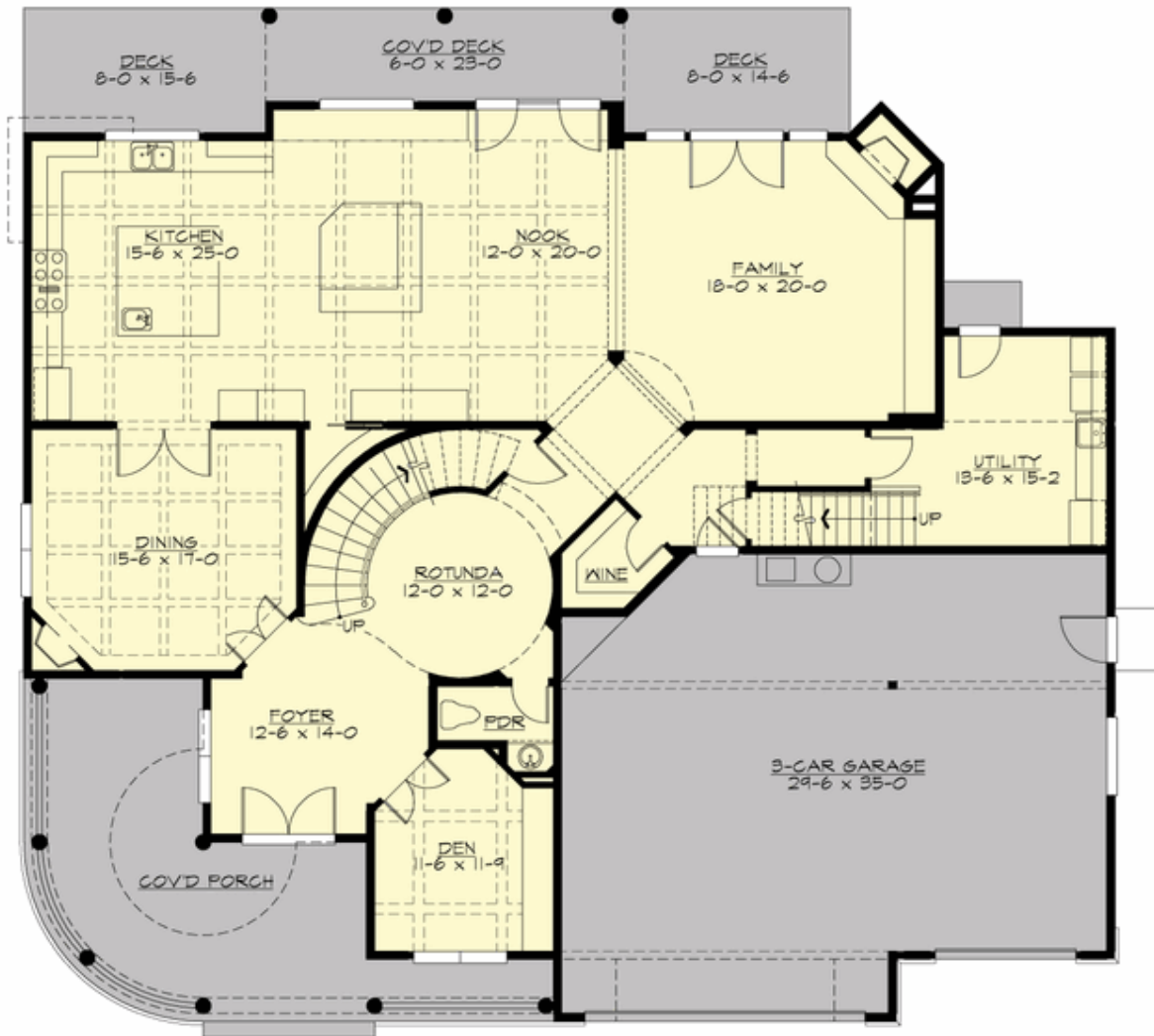
Total Area: 5197 sq. ft.  
Garage Area: 977 sq. ft.  
Garage Area: 977 sq. ft.  
Garage Size: 3  
Stories: 2  
Bedrooms: 4  
Full Baths: 4  
Half Baths: 2  
Width: 70'-0"  
Depth: 64'-0"  
Height: 29'-3"  
Foundation: Crawl Space



**Plan beautifully built by Mirikeen Homes**

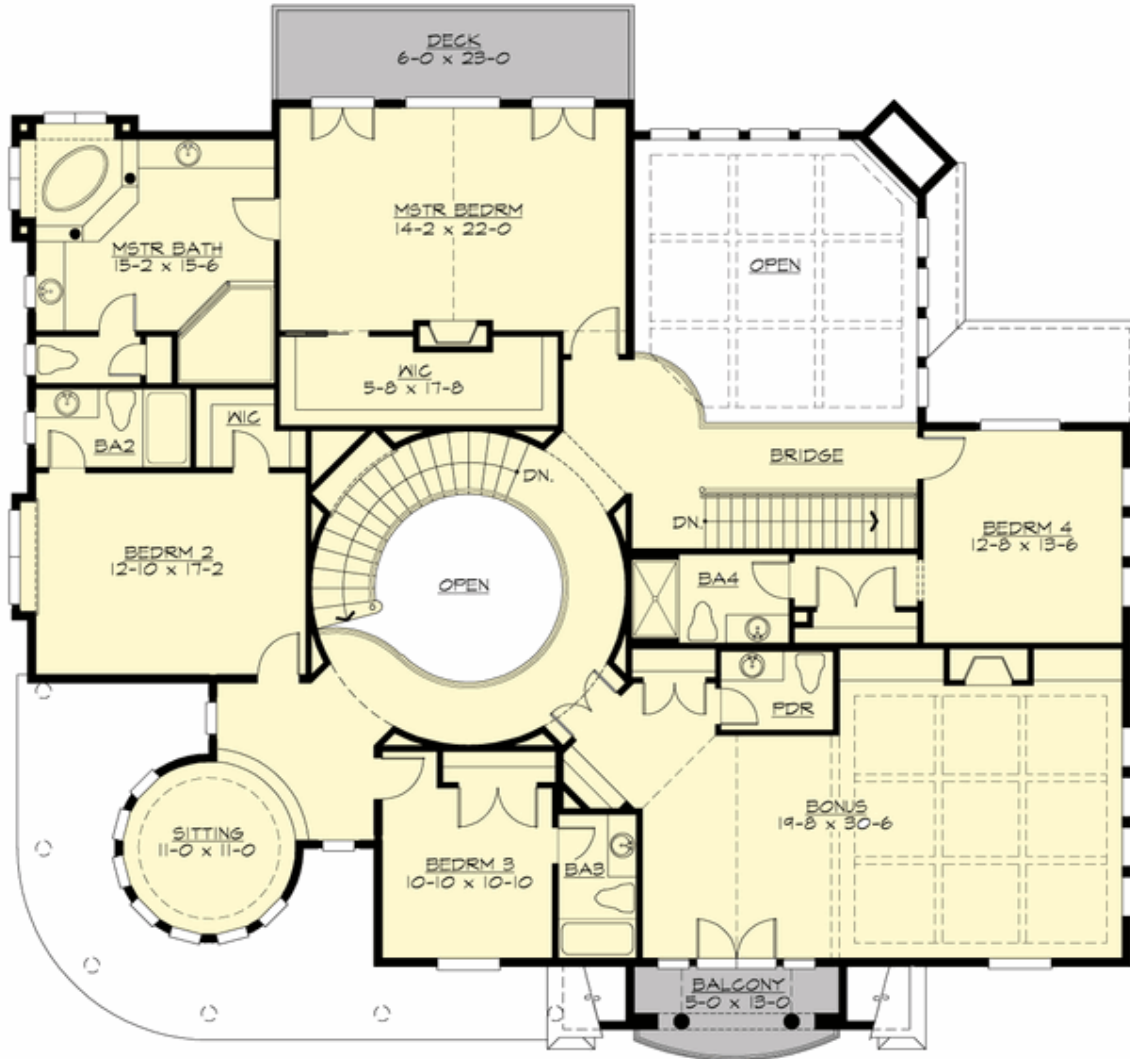
## HAMPTON ROADS - PLAN M5197A3F-0

### MAIN FLOOR



## HAMPTON ROADS - PLAN M5197A3F-0

### UPPER FLOOR



## HAMPTON ROADS - PLAN M5197A3F-0

### PLAN DETAILS

#### Area Summary

Total Area: 5197 sq. ft.  
Main Floor: 2428 sq. ft.  
Upper Floor: 2769 sq. ft.  
Garage Floor: 977 sq. ft.

#### General Information

Stories: 2  
Width: 70'-0"  
Depth: 64'-0"  
Height: 29'-3"

#### Architectural Style

Cape Cod  
Hampton  
Shingle

#### Number of Rooms

Bedrooms: 4  
Full Baths: 4  
Half Baths: 2

#### Garage

Garage Size: 3  
Garage Door Location: Front

#### Roof Pitches

Primary: 6:12  
Secondary: 5:12

#### Wall Heights

Main: 10'-0"  
Upper: 9'-0"

#### Foundation Type

Crawl Space

#### Roof Framing

Combination

#### Floor Load

Live (lbs): 40 PSF  
Dead (lbs): 10 PSF

#### Roof Load

Live (lbs): 25 PSF  
Dead (lbs): 15 PSF  
Wind: 85 MPH

#### Design Features

- Bonus Space @ Upper Floor
- Den/Office
- Front and Rear Porch
- Great Room
- Laundry Room @ Main Floor
- Luxury Plan
- Master Bedroom @ Upper Floor Rear
- View Lot - Rear
- Wide Lot